

0.19  
[4.7]

Ø 1.02  
[26.0]

Ø 0.54  
[13.7]

0.11  
[2.8]

Ø 1.43  
[36.3]

Ø 0.95  
[24.2]

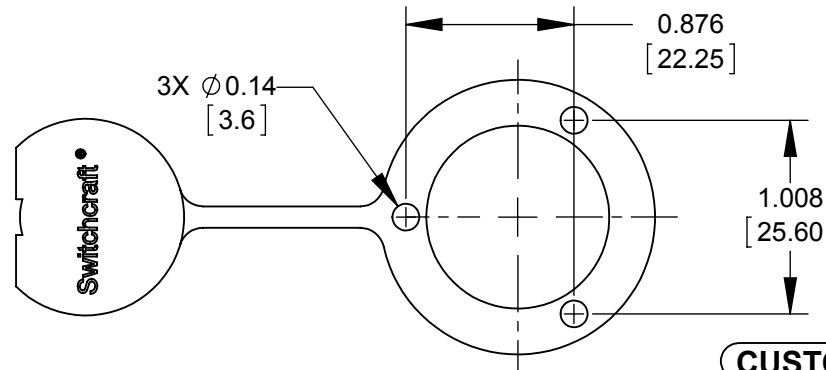
0.36  
[9.2]

2.25  
[57.2]

0.293  
[7.44]

0.47  
[11.8]

0.04  
[1.0]



3X Ø 0.14  
[3.6]

0.876  
[22.25]

1.008  
[25.60]

NOTES:

1. MATERIAL - BLACK THERMOPLASTIC ELASTOMER.
2. THIS PART IS ROHS COMPLIANT.

**CUSTOMER DRAWING**

					THIS DRAWING DESCRIBES A DESIGN CONSIDERED PROPRIETARY IN NATURE, DEVELOPED AND MANUFACTURED BY SWITCHCRAFT INC. AND IS RELEASED ON A CONFIDENTIAL BASIS FOR IDENTIFICATION PURPOSES ONLY.				
					SIZE	WIDTH	MULT	LBS/M	TEMPER
					FINISH			SEE NOTES	
					SPEC No.			MATERIAL	
					FIRST USED ON			SCALE	
					DATE DRAWN			1:1	
					BY			APVD	
					10-13-14			8-12-15	
					SRC			TJK	
					CHKD			APVD	
					10-13-14			8-12-15	
					SRC			TJK	
A	RELEASED 27511	6-24-15	SRC	TJK					
REV	ECO NUMBER	DATE	BY	APVD					
REVISIONS					NAME				
DO NOT SCALE DRAWING					"C" SERIES MALE CAP				
					PART No.			REV	
					CAPMC			A	

SolidWorks CAD File

