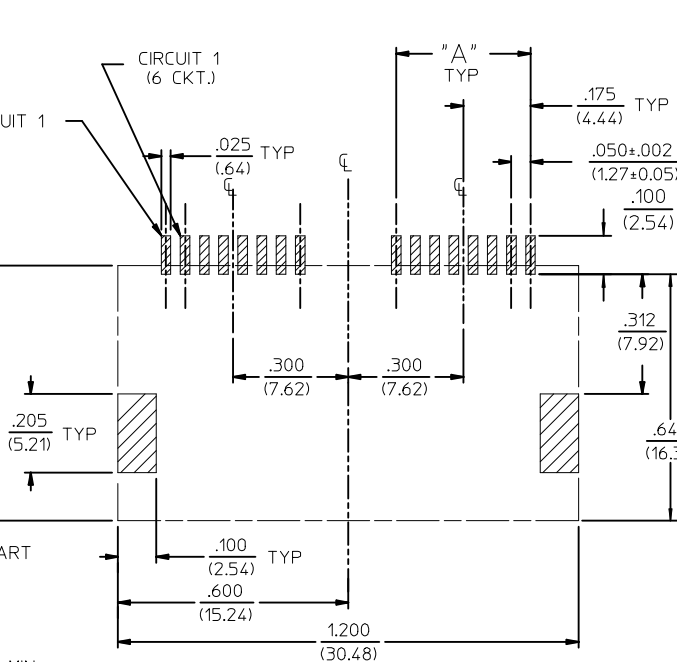
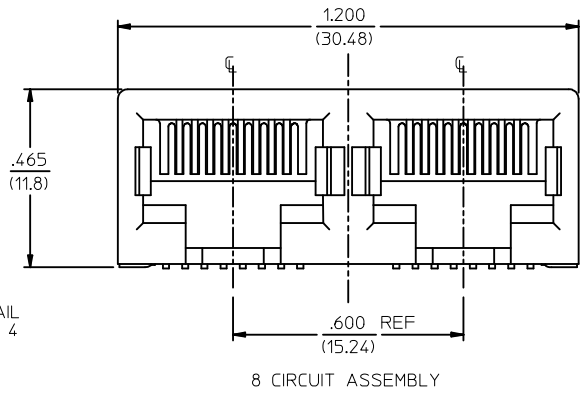
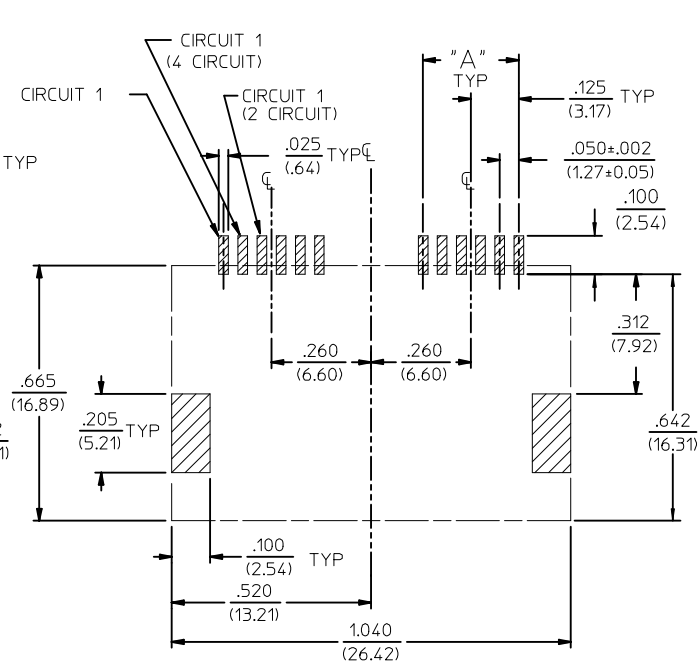
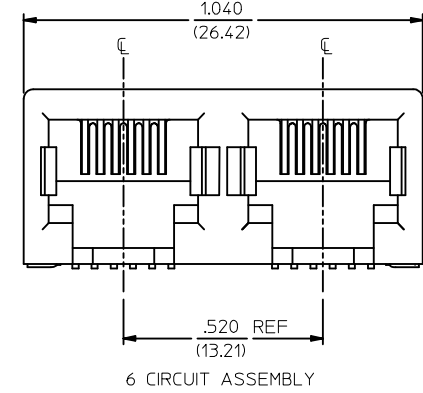


- NOTES :
- MATERIALS :  
HOUSING : NYLON, GLASS-FILLED, UL94V-0, COLOR - SEE CHART  
TERMINALS : PHOSPHOR BRONZE, .012/(0.30)  
FITTING NAILS : BRASS ALLOY, .010/(0.25)
  - FINISH :  
TERMINAL PLATING OPTIONS : (SEE TABLE)  
(A) SELECT GOLD IN CONTACT AREA: .000050/(0.00127) MIN.,  
\*SELECT MATTE TIN IN PC TAIL AREA: .000100/(0.00254) MIN.,  
WITH OVERALL NICKEL UNDERPLATE: .000050/(0.00127) MIN.  
(B) SELECT GOLD IN CONTACT AREA: .000030/(0.00076) MIN.,  
\*SELECT MATTE TIN IN PC TAIL AREA: .000100/(0.00254) MIN.,  
WITH OVERALL NICKEL UNDERPLATE: .000050/(0.00127) MIN.  
(C) SELECT GOLD IN CONTACT AREA: .000015/(0.00038) MIN.,  
\*SELECT MATTE TIN IN PC TAIL AREA: .000100/(0.00254) MIN.,  
WITH OVERALL NICKEL UNDERPLATE: .000050/(0.00127) MIN.
  - FITTING NAILS :  
\*100 MICROINCHES MATTE TIN OVER 50 MICROINCHES NICKEL UNDERPLATE  
\*THE PRIMARY SHIPPING CARTON WILL BE LABELED "ELV AND RoHS COMPLIANT". CARTONS WITHOUT THIS LABEL MAY CONTAIN PRODUCT WITH TIN-LEAD IN THE PC TAIL AREA.
  - PRODUCT SPECIFICATION : PS-43743-001
  - COPLANARITY SPECIFICATIONS:  
WITH THE MODULAR JACK SITTING ON A LEVEL SURFACE, THE MAXIMUM GAP BETWEEN THE LEVEL SURFACE AND ALL TERMINAL TAILS AND BOTH FITTING NAILS IS .006/(0.15).
  - FOR ASSEMBLIES HAVING VOIDED CIRCUITS, THE TAIL PORTION IS CUT AND REMOVED. THE MATING PORTION OF THE TERMINAL REMAINS INTACT. VOIDED CIRCUITS MUST BE THE SAME FOR BOTH PORTS.
  - CONVECTION SOLDERING TECHNOLOGY SHOULD BE USED WHEN GANGING MODULAR JACKS WITH INBOARD NAILS SIDE-BY-SIDE.
  - THIS PART CONFORMS TO CLASS B REQUIREMENTS OF COSMETIC SPECIFICATION PS-45499-002.



PC BOARD LAYOUT FOR 8 POSITION HOUSING  
(COMPONENT SIDE OF BOARD)



PC BOARD LAYOUT FOR 6 POSITION HOUSING  
(COMPONENT SIDE OF BOARD)

|   |       |
|---|-------|
| 2 | G1    |
| 1 | G2    |
|   | SHREV |

|   |             |
|---|-------------|
| REVISED NOTES<br>EC NO: UCP2009-1244<br>DRAWN: KLOSTNER 2008/12/10<br>CHKD: JEBEL 2008/12/10<br>APPR: FBMITH 2008/12/10 | DESCRIPTION |
| G2  | REV         |

|  |        |        |
|--|--------|--------|
| QUALITY SYMBOLS                                      | ▽=0    | ▽=0    |
| GENERAL TOLERANCES (UNLESS SPECIFIED)                | mm     | INCH   |
| 4 PLACES ± ---                                       | ± ---  | ± ---  |
| 3 PLACES ± ---                                       | ± .010 | ± .015 |
| 2 PLACES ± .25                                       | ± .015 | ± .025 |
| 1 PLACE ± 0.38                                       | ± ---  | ± ---  |
| ANGULAR ±1/2°  |        |        |
| DRAFT WHERE APPLICABLE MUST REMAIN WITHIN DIMENSIONS |        |        |

|   |          |   |              |                        |
|---|----------|---|--------------|------------------------|
| DIMENSION STYLE   |          | SCALE   | DESIGN UNITS | THIRD ANGLE PROJECTION |
| IN/MM   |          | 1:1   | INCH         |                        |
| DRAWN BY  | DATE     | TITLE   |              |                        |
| MUELLER   | 98/06/11 | 4, 6, & 8 CIRCUIT DUAL PORT SMT MODULAR JACK W/ FLUSH MOUNT NAILS |              |                        |
| CHECKED BY  | DATE     | MOLEX MOLEX INCORPORATED  |              |                        |
| ROBERTS   | 98/06/16 | MATERIAL NO. SEE SHT 2  |              |                        |
| APPROVED BY   | DATE     | DOCUMENT NO. SD-44193-001   |              |                        |
| EDGLEY  | 98/06/17 | SHEET NO. 1 OF 2  |              |                        |
| THIS DRAWING CONTAINS INFORMATION THAT IS PROPRIETARY TO MOLEX INCORPORATED AND SHOULD NOT BE USED WITHOUT WRITTEN PERMISSION |          |   |              |                        |