

MICRO SWITCH

A DIVISION OF HONEYWELL INTERNATIONAL REGULATED COMPANY
PREPARED, ALBANY, N.Y.

FED. MFR CODE 91929

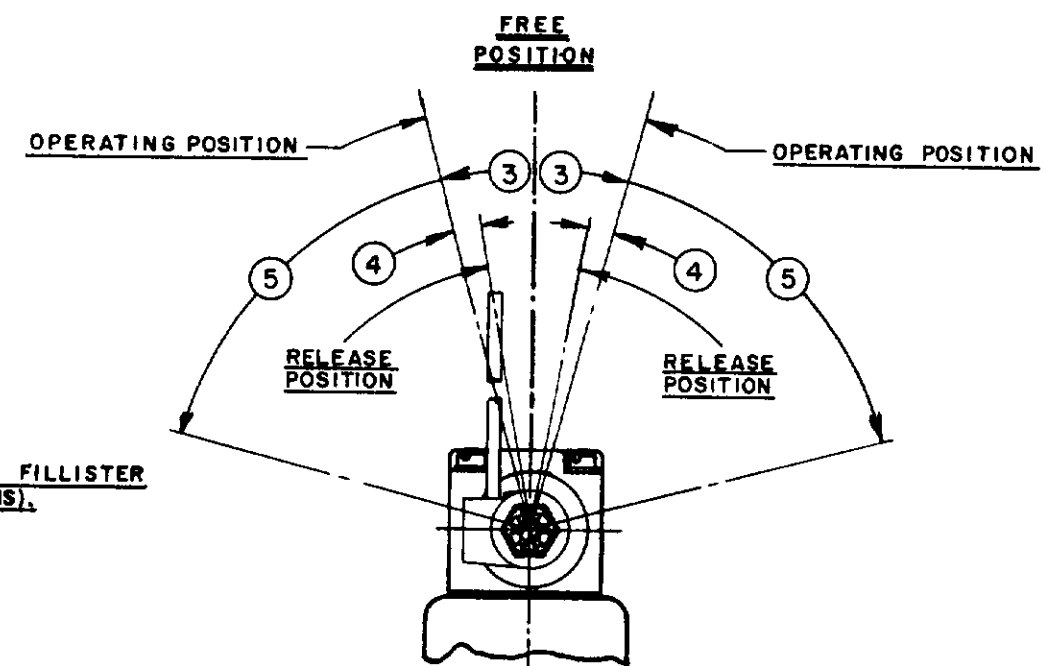
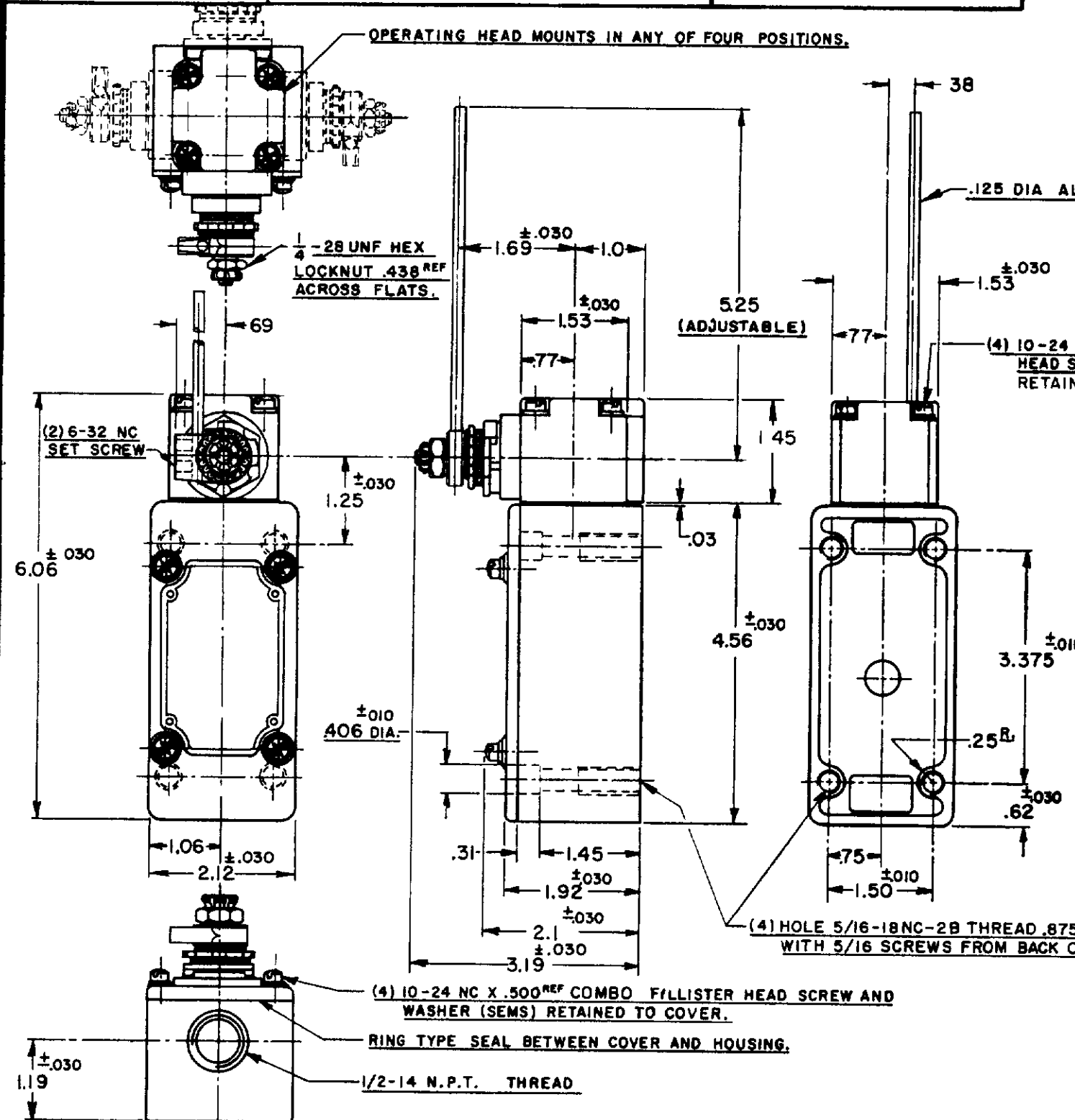
SWITCH-ENCLOSED

CATALOG LISTING
151ML10

THIS DRAWING COVERS A PROPRIETARY ITEM AND IS THE PROPERTY OF MICRO SWITCH A DIVISION OF HONEYWELL. THIS DRAWING IS NOT TO BE COPIED OR USED WITHOUT THE APPROVAL OF MICRO SWITCH

M

REPLACES
151ML10
DRAWING NUMBER
M
ISSUE
12
REVISIONS
A C052194 J A P 23 SEPT 83
B C055051-6 J A P 17 DEC 84
C C074287 G J W 23 APR 85
CHECK
30 SEPT 83
CHECK
30 SEPT 83
CHECK
30 SEPT 83
DRAWN
J A P 23 SEPT 83



- NOTES
- 1 - IT IS ESSENTIAL TO PREVENT ENTRANCE OF HARMFUL AGENTS THRU THE CONDUIT OPENING TO OBTAIN THE FULL BENEFIT OF THE SEALED CONSTRUCTION PROVIDED IN THIS UNIT
 - 2 SWITCH IS ASSEMBLED FOR ACTUATION IN CLOCKWISE DIRECTION ONLY TO CONVERT SWITCH FOR ACTUATION IN THE COUNTER-CLOCKWISE DIRECTION ONLY, REMOVE THE HEAD AND SLIDE THE CAM TOWARD THE REAR OF THE HEAD SUFFICIENTLY TO DISENGAGE FROM THE FLATS ON THE SHAFT. ROTATE THE CAM 180° AND RE-ENGAGE THE CAM WITH THE FLATS ON THE SHAFT
 - 3
 - 4 - LEVER MAY BE POSITIVELY LOCKED AT INTERVALS OF APPROX 0.4° (870 POSITIONS) BY POSITIONING LEVER AND ROTATING SPACER TO MATCH TEETH
 - 5 - LEVER MAY BE ADJUSTED TO ACTUATE THE SWITCH IN THE CLOCKWISE DIRECTION ONLY OR THE COUNTER-CLOCKWISE DIRECTION ONLY

CHARACTERISTICS		ELECTRICAL DATA		SCALE 1/2 TO 1
OPERATING FORCE	5 OZ. MAX.	CONTACT ARRANGEMENT	BREAK DISTANCE	DO NOT SCALE PRINT
FULL OVERTRAVEL FORCE	7 OZ. MAX.	TWO CIRCUIT - DOUBLE THROW DOUBLE BREAK		UNLESS OTHERWISE SPECIFIED
RELEASE FORCE	3/4 OZ. MIN.			DIMENSIONS ARE IN INCHES
PRETRAVEL	③ -15° MAX	10A-120, 240, 480, OR 600 VAC	UL	TOLERANCES ARE:
DIFFERENTIAL TRAVEL	④ -7° MAX.	1/2 HP-120 VAC, 1 HP-240 VAC		ONE PLACE (.0) ±.000
OVERTRAVEL	⑤ -60° MIN.	0.8 A-115 VDC, 0.4 A-230 VDC		TWO PLACE (.00) ±.000
SWITCH-BASIC REPLACEMENT	1M5	PILOT DUTY 600 VAC MAX		THREE PLACE (.000) ±.000
		SP		ANGLES ±
				WEIGHT