

LOC
A1

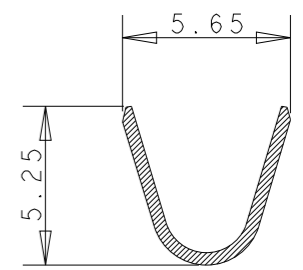
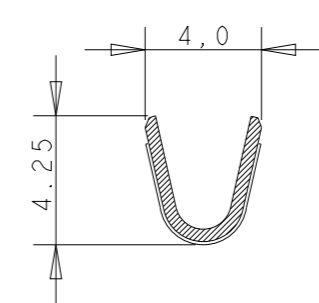
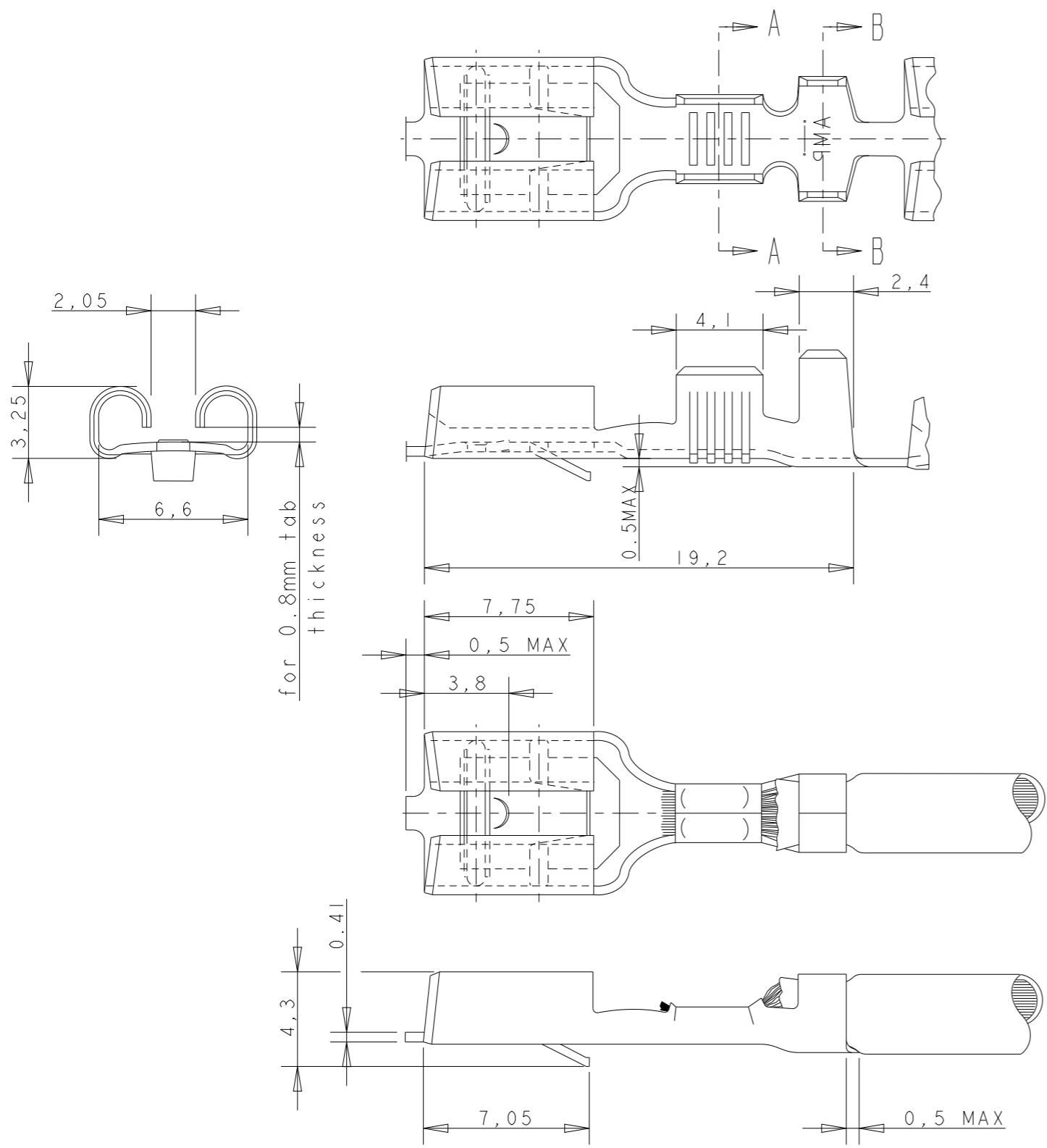
DIST
-

REVISIONS

P	LTR	DESCRIPTION	DATE	DWN	APVD
	H2	REVISED PER ECO-11-005294	21MAR2011	RK	HMR
	J	REVISED PER ECR-21-100134	15FEB2021	BDA	DH

NOTES:

- 1 FOR USE ON MINIATURE APPLICATORS (LEFT-RIGHT FEED) AND STANDARD APPLICATORS (RIGHT-LEFT FEED).
- 2 FOR USE ON MINIATURE APPLICATORS (AMP-O-MATOR APPLICATION). (LEFT-RIGHT FEED).
- 3 OBSOLETE PARTS: OBSOLETE CIS STREAMLINING PER D.RENAUD/D.SINISI



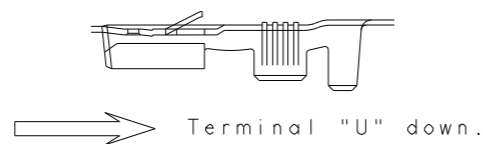
SECTION A-A

SECTION B-B

OBSOLETE		FINISH	MATERIAL	PART NUMBER
3	1	PRE-TINPLATED	PH.BRONZE	6-160446-8
	1	PRE-TINPLATED	BRASS	6-160446-7
	1 2	TINPLATED	PH.BRONZE	6-160446-6
	1 2	SILVER OVER NICKEL PLATED	PH.BRONZE	5-160446-8
	1 2	SILVER OVER NICKEL PLATED	BRASS	5-160446-6
	1	TINPLATED	BRASS	5-160446-5
	1	UNPLATED	BRASS	5-160446-4
	1	TINPLATED	PH.BRONZE	5-160446-2
	1	UNPLATED	PH.BRONZE	5-160446-1

GENERAL TOLERANCES ±0.3

DIRECTION OFF TOP OF REEL



WIRE RANGE :
1,0-2,5 mm²
INSULATION RANGE :
3,0-4,1mm DIA.

THIS DRAWING IS A CONTROLLED DOCUMENT.

DIMENSIONS:	TOLERANCES UNLESS OTHERWISE SPECIFIED:
mm	
0 PLC	±·
1 PLC	±·
2 PLC	±·
3 PLC	±·
4 PLC	±·
ANGLES	±1°
FINISH	SEE TABLE

DWN	J.V.LIEMPT.	21MARI992
CHK	A.BIJNEN.	-
APVD	L.V.SOEST.	-
PRODUCT SPEC	-	-
APPLICATION SPEC	-	-
WEIGHT	-	-
CUSTOMER DRAWING		



NAME				RESTRICTED TO	
.250 SRS FASTIN-ON RECEPTACLE					
SIZE	CAGE CODE	DRAWING NO			
A3	00779	C-160446			
SCALE	SHEET	OF	REV		
			J		