

SPRING & BUTTON CONTACTS

- Economical and reliable contacts are ideal for molded cases with self contained battery compartments
- "Solder tab" design for either wire lead or PC mounting
- Unique spring contacts adjust to variations in battery lengths
- Reliable spring contacts assure low contact resistance and a dependable connection
- Space saving, economical, excellent mechanical construction

MATERIAL:

Plate: .020 (.51) Steel, Nickel Plate **Spring:** Spring Steel, Nickel Plate

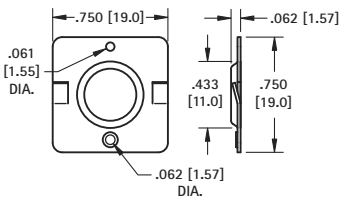


Refer to page 37 for Battery Contact Layout & Mounting Details

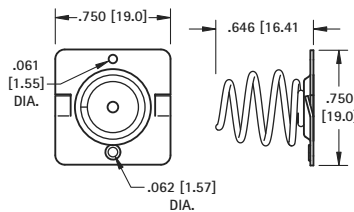
BATTERY CONTACTS FOR MOLDED CASES

"C" CELL - "26650"

(+) POSITIVE BUTTON



(-) NEGATIVE SPRING

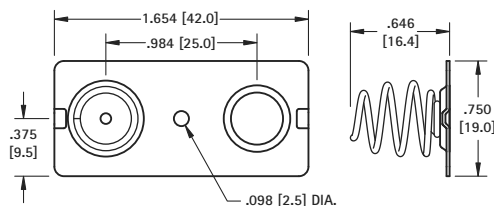


CAT. NO. 5240

CAT. NO. 5241

"C" CELL

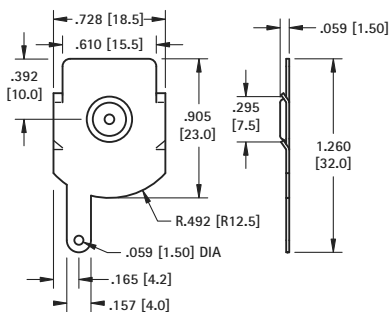
DUAL CONTACT



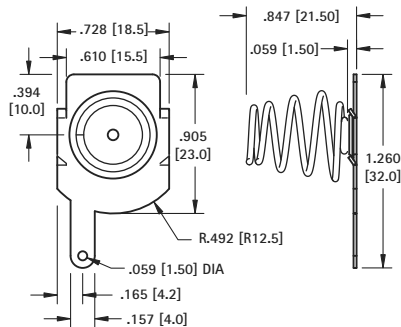
CAT. NO. 5242

"D" CELL

(+) POSITIVE BUTTON



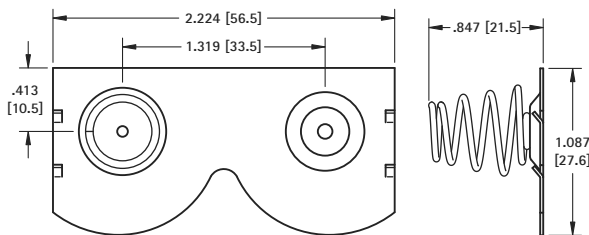
(-) NEGATIVE SPRING



CAT. NO. 5250

CAT. NO. 5251

DUAL CONTACT



CAT. NO. 5253 Left

CAT. NO. 5252 Right (Shown)