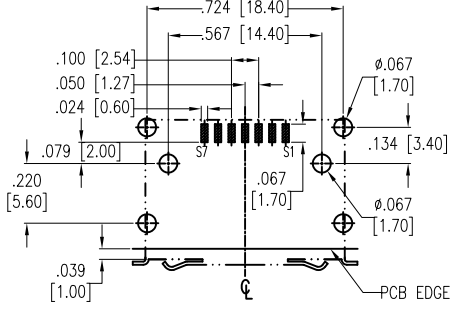
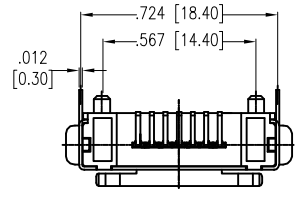


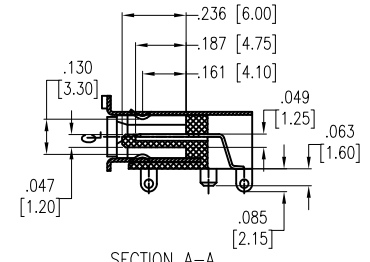
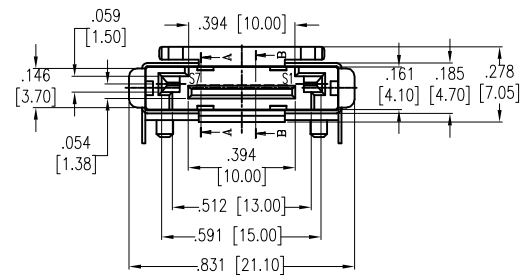
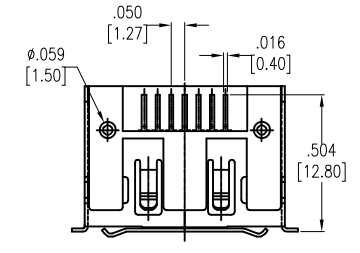
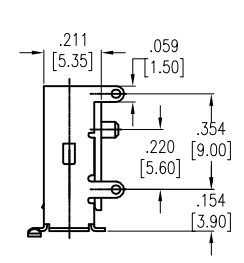
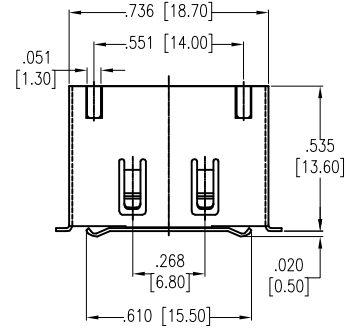
Rev	AWO #	Description	Date	Appr
-	4439	RELEASED	10/12/06	
A	4439	REVISED SHAPE	3/16/12	
B		UPDATE SHAPE	12/19/14	AY/LL
C		UPDATE DRAWING	10/12/17	HR/RC1

APPROVED: _____
DATE: _____ TITLE: _____

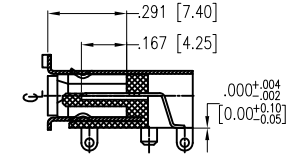
PIN NO.	Signal Name
S1	GND
S2	A+
S3	A-
S4	GND
S5	B-
S6	B+
S7	GND



RECOMMENDED PCB LAYOUT



SECTION A-A



SECTION B-B

SPECIFICATIONS:
Material:
Insulator: Hi-temp thermoplastic, rated UL 94V-0
Insulator color: Black
Contacts: Brass
Plating:
Gold over Nickel underplate on contact area,
Tin over Nickel underplate on PCB tails.
Electrical:
Operating voltage: 100 VAC max
Current rating: 1.5 Ampere per Contact
Contact resistance: 30 mohms max
Insulation resistance: 1,000 Mohms min
Dielectric withstanding voltage: 500 VAC
Temperature Rating:
Operating temperature: -55°C to +85°C
Environmental:
Lead free, RoHS compliant.



UNLESS OTHERWISE SPECIFIED ALL DIMENSIONS ARE INCHES [MM] TOLERANCES: EXCEPT AS NOTED INCHES HOLES		
.X ± .10	Ø.X ± .10	
.XX ± .020	Ø.XX ± .015	
.XXX ± .015	Ø.XXX ± .010	
APPROVALS		DATE
DRAWN	BW	12/12/06
CHECKED		
APPROVED		

ADAM TECH
909 Rahway Avenue, Union, NJ 07083
Phone: 908-687-5000 Fax: 908-687-5710

TITLE: **SATA CONNECTOR, RIGHT ANGLE SURFACE MOUNT**

SIZE	PART NO.	REV.
X	SATA-J-NP-SMT-P-S-PG	C

REF: S00078T SCALE: NTS SHEET 1 OF 1

6

5

4

3

2

1

6

5

4

3

2

1