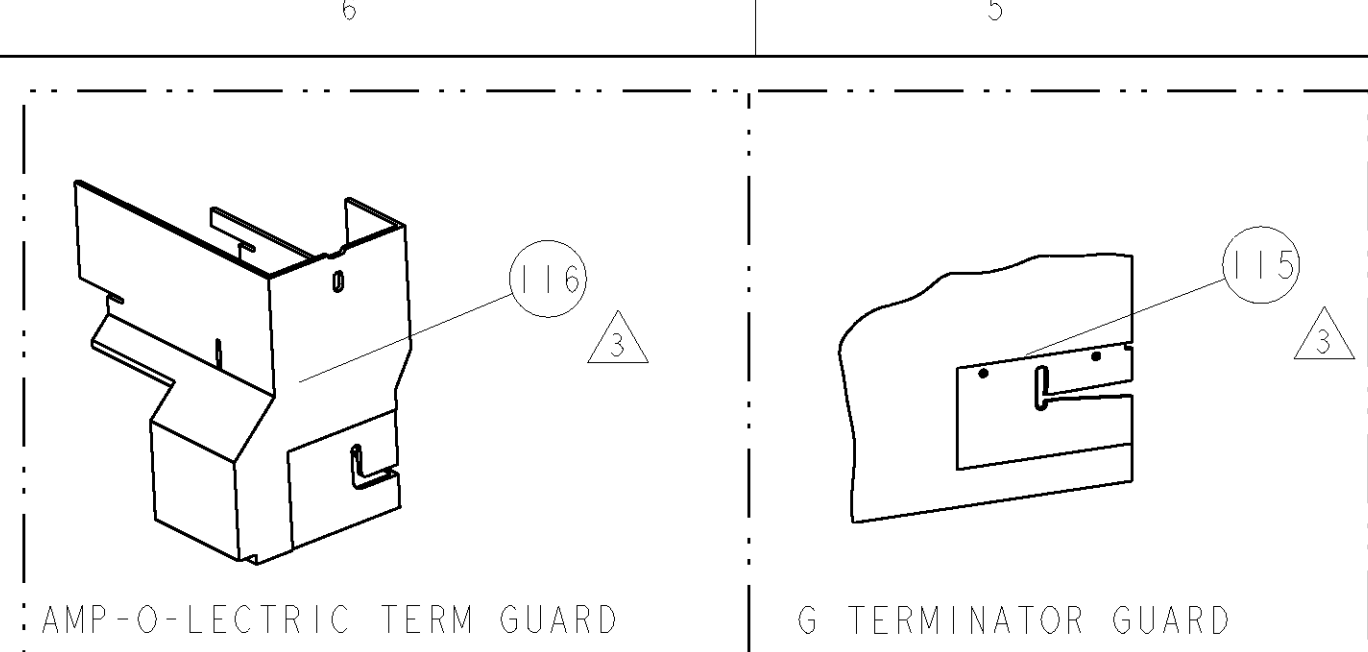


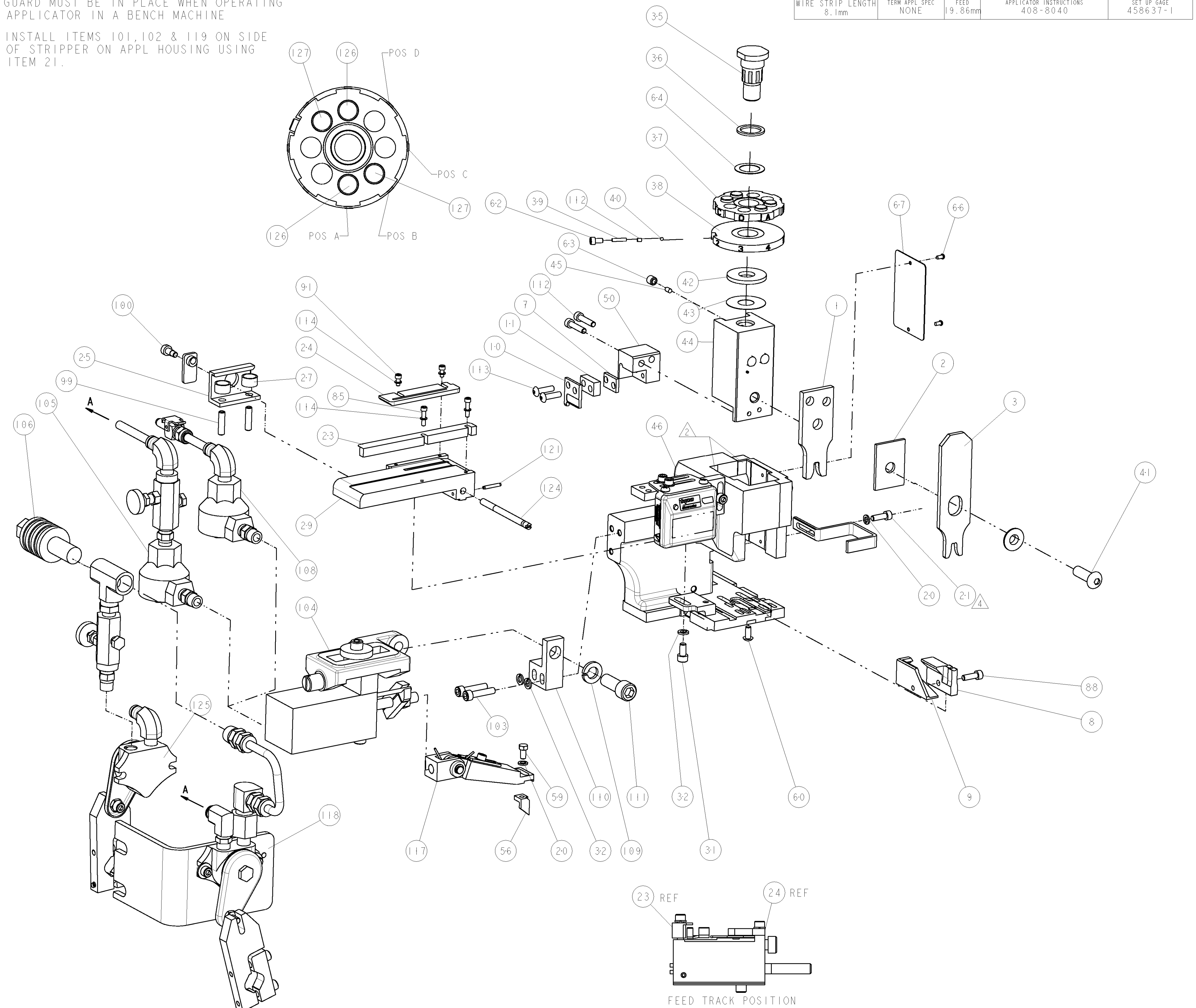
PART NUMBER	REV	FIRST USED	POWER UNIT	FEED TYPE	DESCRIPTION
1852377-1	A	122500-1	LEADMAKER	AIR FEED	CUTS CARRIER
1852377-2	A	565435-5	BENCH MODEL K	AIR FEED	CUTS CARRIER
1852377-3	A	354500-1	BENCH MODEL G	AIR FEED	CUTS CARRIER
7-1852377-7	A	-	-	-	SPARE PARTS



TERMINAL NAME: MEDIUM RING TERMINAL			
TE PN	MANUF PN	PACKARD TERM - PACKARD CRIMP SPECS	
1949211-1	12103506		
1949236-1	12162099	PAD LTR	CRIMP HEIGHT
1949748-1	12103505	A	2.60±0.05mm [.102±.002]
-	-	B	2.45±0.05mm [.097±.002]
-	-	C	-
-	-	D	-
-	-	CRIMP	SIZE TYPE RANGE
-	-	WIRE	4.19mm [.165] F 2.00-3.00 mm2
-	-	INSUL	5.00mm [.197] F ∅ 3.7 mm MAX
WIRE STRIP LENGTH	TERM APPL SPEC	FEED	APPLICATOR INSTRUCTIONS
8.1mm	NONE	19.86mm	408-8040
			SET UP GAGE 458637-1

LOC	DIST	REVISIONS			
A	66	P LTR	DESCRIPTION	DATE	DWN
		A	RELEASED	25APR2007	BH
		A1	ECR-08-018422	23JUL2008	MY TE

- ▲ RECOMMENDED SPARE PARTS
- ▲ GREASE LIGHTLY
- ▲ GUARD MUST BE IN PLACE WHEN OPERATING APPLICATOR IN A BENCH MACHINE
- ▲ INSTALL ITEMS 101, 102 & 119 ON SIDE OF STRIPPER ON APPL HOUSING USING ITEM 21.



ITEM NO	QTY	U/M	PART NO	DESCRIPTION
-	2	2	2	4-354779-7 PIN, WIRE DISC, .3225
-	2	2	2	3-354779-8 PIN, WIRE DISC, .3180
-	-	-	-	455350-4 AIR BLAST ASS'Y
-	1	1	1	690432-3 ADJUSTMENT SCREW
-	1	1	1	3-21028-8 PIN, SLOTTED SPRING .094 X .625
-	18	24	18	27319-4 TUBING, POLY-FLO, NATURAL
-	-	-	-	692655-6 AIR FEED VALVE ASSEMBLY
-	1	1	1	461062-1 FEED FINGER ASSEMBLY
-	-	REF	-	455749-1 GUARD WINDOW
-	REF	-	-	679532-1 INSERT, GUARD
-	4	4	4	21024-2 WASHER, SPRG LOCK, REG NO 4
-	2	2	2	2-21002-3 SCR, BTN SKT HD CAP 8-32 X .625
-	1	1	1	690603-1 SPRING ASSIST AMP-O-MATOR APPLICATOR
-	2	2	2	2-21000-9 SCR, SKT HD CAP 8-32 X .750
-	1	1	1	3-21001-5 SCR, SKT HD CAP 3/8-16 X 1.000
-	1	1	1	459610-1 MOUNT, FEED BRACKET
-	1	1	1	21024-8 WASHER, SPRG LOCK, REG 3/8
-	1	1	1	692655-7 AIR FEED VALVE ASSEMBLY
-	-	-	-	24042-2 VALVE, SLEEVE, 3-WAY
-	-	-	-	692655-5 AIR FEED VALVE ASSEMBLY
-	1	1	1	461065-1 ASSEMBLY, AIR FEED
-	2	2	2	3-21000-8 SCR, SKT HD CAP 10-32 X .875
-	1	1	1	986220-3 CLAMP, CABLE, BLACK
-	-	-	-	23238-1 INSERT, COUPLING
-	1	1	1	22353-8 SCR, SHLD, SLOT HD, 3/16 DIA
-	2	2	2	5-21006-6 SCR, SET, CUP POINT 10-32 X .750
-	2	2	2	1-21000-3 SCR, SKT HD CAP 4-40 X .250
-	1	1	1	2-21000-7 SCR, SKT HD CAP 8-32 X .500
-	2	2	2	1-21000-5 SCR, SKT HD CAP 4-40 X .500
-	1	1	1	4088040 SF APPL INST 408-8040
-	1	1	1	217238-1 GENERAL INSTRUCTION PKG
-	1	1	1	461264-1 PLATE, IDENTIFICATION
-	2	2	2	21017-2 SCREW, DRIVE
-	1	1	1	986950-1 WASHER, FLAT PRECISION
-	1	1	1	21009-2 SCR, SET, SELF LOCKING 1/4-20 X .250
-	1	1	1	23030-1 SCR, SKT HD CAP 6-32 X .25
-	1	1	1	22733-8 SCR, BHSC, SELF-LOCKING, 8-32 X .375
-	1	1	1	2-22603-0 SCR, HEX HD CAP 8-32 X .312
-	1	1	1	2-694433-8 FEED PAWL
-	1	1	1	1633513-2 HOLDER, SLUG BLADE
-	1	1	1	1633399-1 APPL., BASIC AIR FEED SUB ASSY
-	1	1	1	690191-1 PLUG, NYLON
-	1	1	1	455673-6 RAM, SIDE FEED
-	1	1	1	690125-1 SHIM SUB-ASSY
-	1	1	1	690124-3 WASHER, RAM (.110)
-	1	1	1	7-21002-9 SCR, BTN SKT HD CAP 5/16-24 X 1.00
-	1	1	1	23241-6 BALL, STEEL
-	1	1	1	690170-1 SPRING, COMPRESSION
-	1	1	1	1-690142-2 DISC, INSULATION
-	1	1	1	354777-1 WIRE DISC, ASSEMBLY
-	1	1	1	22480-5 SPRING, COMPRESSION
-	1	1	1	690212-1 POST, RAM
-	3	3	3	21024-5 WASHER, SPRG LOCK, REG NO 10
-	1	1	1	3-21000-4 SCR, SKT HD CAP 10-32 X .375
-	1	1	1	3-844048-1 PLATE, REAR STRIP GUIDE
-	2	2	2	22284-1 SPRING, COMPRESSION
-	1	1	1	356835-1 LEVER, DRAG RELEASE
-	1	1	1	240792-1 DRAG, TERMINAL
-	1	1	1	1633497-2 REAR STRIP GUIDE
-	1	1	1	2-189124-1 GUIDE, FRONT STRIP
-	1	1	1	2-21000-7 SCR, SKT HD CAP 8-32 X .500
-	2	2	2	21024-4 WASHER, SPRG LOCK, REG NO 8
-	1	1	1	1-458230-8 STRIPPER
-	1	1	1	8-240641-8 SPACER
-	1	1	1	1633512-3 BLADE, SLUG
-	1	1	1	1-1633124-0 PLATE, REAR SHEAR
-	1	1	1	1633507-7 ANVIL, SPECIAL, COMBINATION
-	1	1	1	8-240641-6 SPACER
-	1	1	1	1-238009-1 BLOCK, FL CRIMPER SPACER
-	1	1	1	4-1633471-4 CRIMPER, INSULATION F
-	1	1	1	2-455888-1 SPACER, CRIMPER
-	1	1	1	6-1673600-9 CRIMPER, WIRE

DIMENSIONS: INCHES 0 PLC ±.01 1 PLC ±.01 2 PLC ±.01 3 PLC ±.001 4 PLC ±.0001 ANGLES ±.0001		TOLERANCES UNLESS OTHERWISE SPECIFIED: FINISH: -		DWN: B. HIGMAN 02JAN2007 CHK: B. HIGMAN 02JAN2007 APVD: T. BENCHOFF 02JAN2007		tyco Tyco Electronics Harrisburg, PA 17105-3608	
MATERIAL: - FINISH: -		WEIGHT: - CUSTOMER DRAWING: -		NAME: SIDE FEED HDM APPLICATOR PRODUCT SPEC: - APPLICATION SPEC: -		SIZE: A1 CAGE CODE: 00779 DRAWING NO: C-1852377 RESTRICTED TO: -	
SCALE: 3:5 SHEET 1 OF 1 REV A1				CUSTOMER VIEWABLE ASSEMBLY			