

## Quality Control Standard

### 出货品质标准

Valued customer 客户名称	Sourceengine	Customer Product Name/No. (客户产品名称/编号):	吸尘器	
Model No 机种编号	RV476-SD-2675	Swatch No.: 样品编号	EHA231-0016	Date作成日: <span style="color: red;">2023/1/12</span> Rev.
Our Code No. 仕样编号	RV476-SD-00004A 陈礼云2023.02.01	(Please Use Our Code No. To Order) (订货时请用此仕样编号)		Rev. Date修订日:
			备注	ROHS

### 1. Conditions of Standard Operation / 工作条件

1- 1 )Driving Voltage 驱动电压	: <span style="color: red;">24</span> V	DC Constant between motor terminals. 马达端子电压 <span style="color: red;">24</span> V 直流恒压。
1- 2 )Direction of Rotation 回转方向	: <span style="color: red;">CCW</span>	viewing from metal housing. <span style="color: red;">CCW</span> 面对马达金属外壳时。
1- 3 )Position of Motor 马达放置状态	: To be placed horizontally when measuring. 测试时水平放置。	

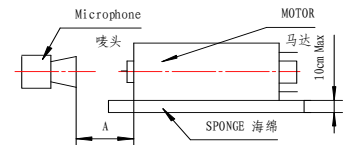
1- 4 )Operating Temperature工作温度 : -10 °C to 60 °C

1- 5 )Operating Humidity工作湿度 : 30%RH to 95%RH

### 2. Conditions of Standard Test / 测试条件

2- 1 )Testing Temperature测试温度	: 10°C to 30°C	
2- 2 )Testing Humidity测试湿度	: 30%RH to 95%RH	

噪音测试示意图



### 3. Initial Electrical Characteristics / 初期特性

3- 1 ) No Load Speed 无负荷转速	: <span style="color: red;">6000</span> ± <span style="color: red;">900</span> rpm	
	: <span style="color: red;">6000</span> ± <span style="color: red;">900</span> 转/分	
3- 2 ) No Load Current 无负荷电流	: <span style="color: red;">300</span> mA max.	
	: 最大 <span style="color: red;">300</span> 毫安培	
3- 3 ) Load Speed 负荷转速	At Load <span style="color: red;">68.6</span> mNm : <span style="color: red;">4600</span> ± <span style="color: red;">700</span> rpm	
	: <span style="color: red;">4600</span> ± <span style="color: red;">700</span> 转/分	
3- 4 ) Load Current 负荷电流	负载 <span style="color: red;">68.6</span> mNm : <span style="color: red;">3000</span> mA max.	
	: 最大 <span style="color: red;">3000</span> 毫安培	
3- 3 ) Stall Torque 堵转扭力	At Load <span style="color: red;">24.0 &amp; 110.0</span> mNm : <span style="color: red;">217</span> mNm min.	
	: 最小 <span style="color: red;">217</span> mNm	
3- 4 ) Stall Current 堵转电流	在负载点 <span style="color: red;">24.0 &amp; 110.0</span> mNm : <span style="color: red;">10.9</span> A max.	
	: 最大 <span style="color: red;">10.9</span> 安培	
3- 5 ) Mechanical Noise(vertical from housing side) 30 cm Background noise 30dB Max)	: <span style="color: red;">60</span> dB Or below(RMS)JIS-A Characteristics	
	机械噪音(距离铁壳侧 30 cm, 环境噪音30dB Max) : dB 以下(RMS) JIS-A特性	
3- 6 ) Reference Performance Curve 参考性能曲线	: As per attached Sheet <span style="color: red;">RV476-SD-2675</span>	
	: 所附图表为 <span style="color: red;">RV476-SD-2675</span>	
3- 7 ) Dimensions 外形尺寸	: As per Drawing attached <span style="color: red;">WG- R476D-T04</span>	
	: 所附图面为 <span style="color: red;">WG- R476D-T04</span>	
3- 8 ) End play of Shaft 虚位	: <span style="color: red;">0.05</span> ~ <span style="color: red;">0.50</span> mm	
	: <span style="color: red;">0.05</span> ~ <span style="color: red;">0.50</span> 毫米	

For & on behalf of Customer

For & on behalf of Standard Motor Co., Ltd.

Jack Lee 2023/01/13



As a reminder, the specification should be signed and returned within two weeks, or it will be considered as acceptable by the customer. 如果客户两周内不签字确认并返回, 将被视为已认可此规格。

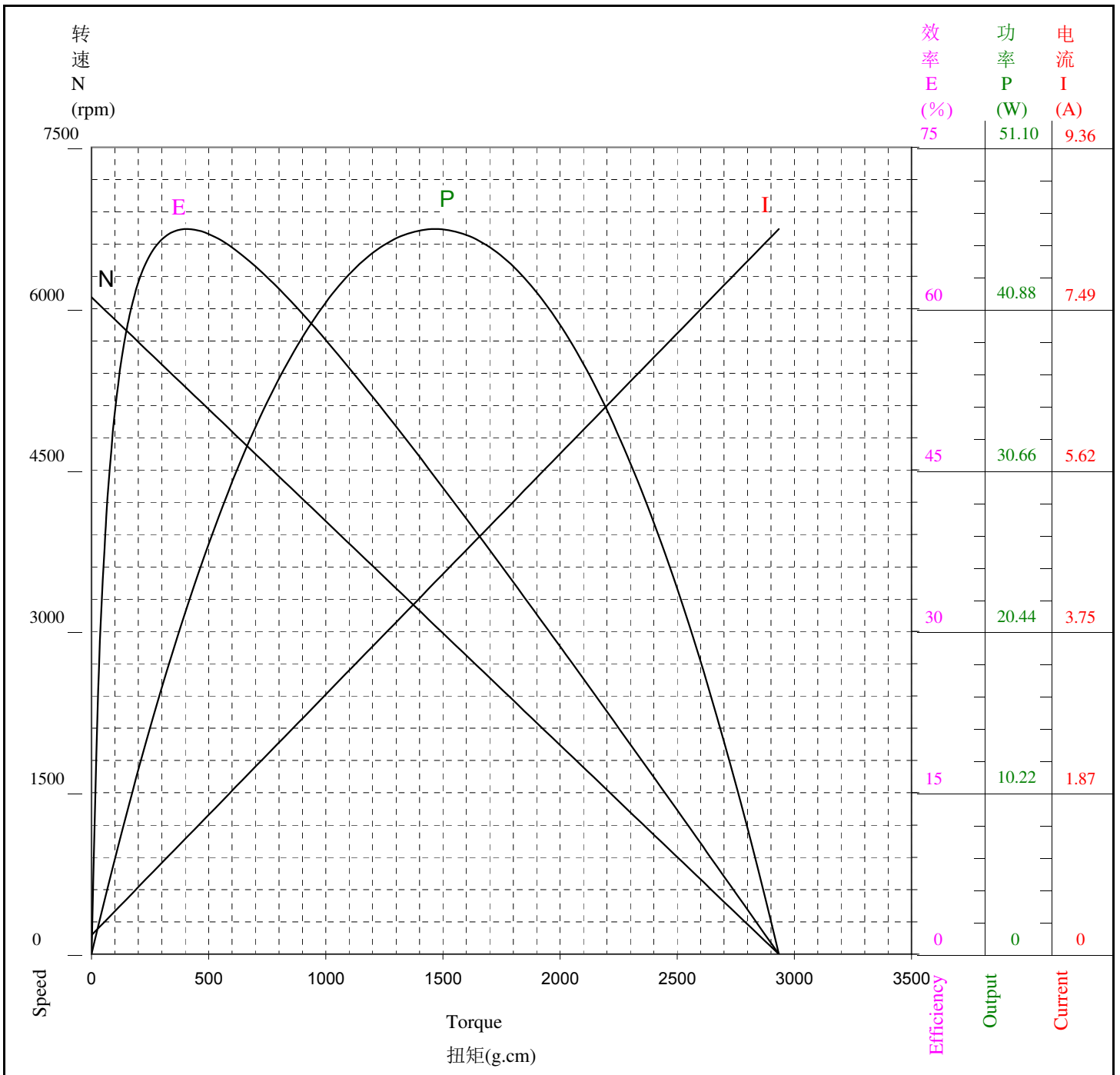
性能表只供参考  
马达实际参数请以马达出货标准为主



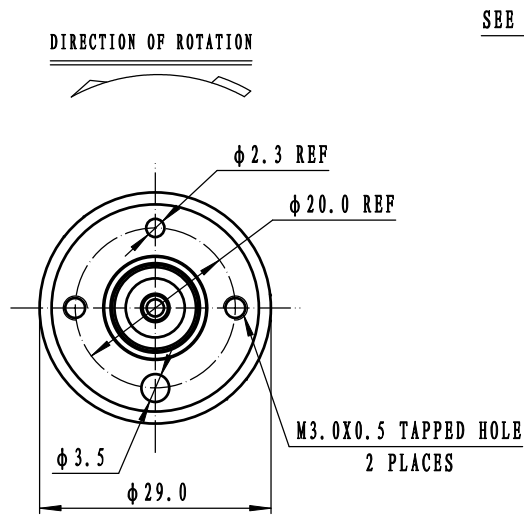
**STANDARDMOTOR 標準微型摩打有限公司**

两点法: 244.7 g.cm & 1121.7 g.cm

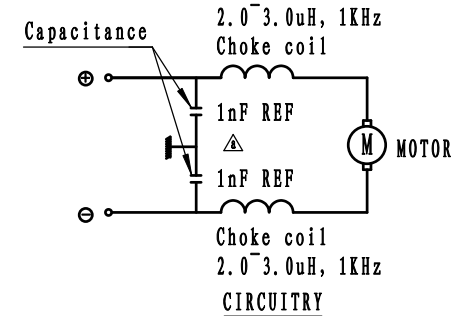
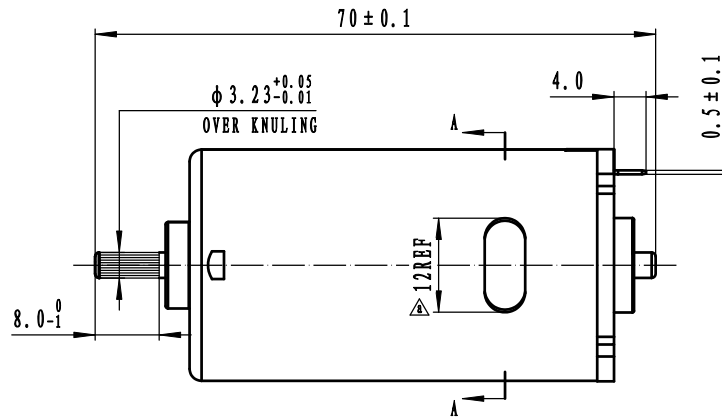
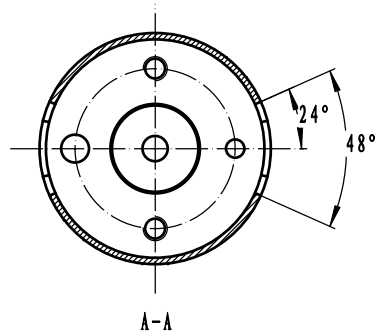
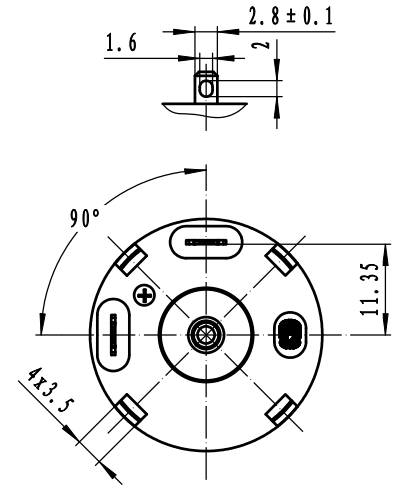
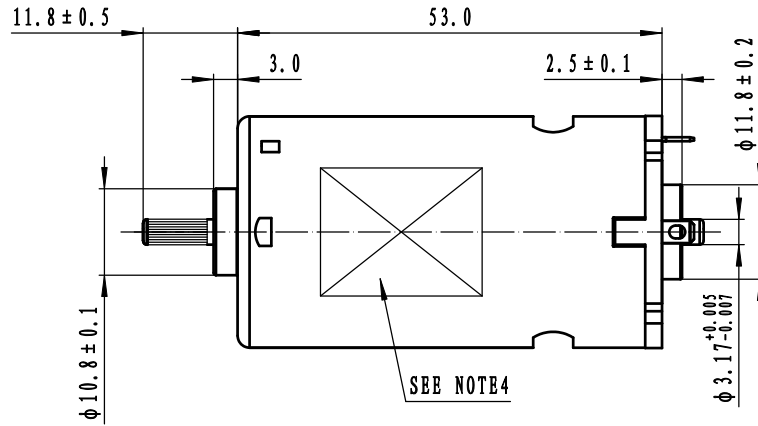
Model/Winding 型号/卷线	Voltage 电压 V	No Load 无负荷		At Maximum Efficiency 最大效率点				At Maximum Output 最大功率点				Stall 停止	
		Current 电流 A	Speed 转速 rpm	Current 电流 A	Speed 转速 rpm	Torque 扭矩 g.cm	Efficiency 效率 %	Current 电流 A	Speed 转速 rpm	Torque 扭矩 g.cm	Output 功率 W	Current 电流 A	Torque 扭矩 g.cm
RV476-SD-2675	24.0	0.220	6106	1.361	5256	408.3	67.4	4.318	3053	1466.8	45.93	8.415	2933.6



MARK	POSITION	DESCRIPTION	DATE	BY
△x2	D5 B7	根据变更通知书SMJ-AP22-056大壳加腰孔, 改电容容量	22.07.06	李江



SEE NOTE1



NOTES (备注):

- THIS DIM APPLIES ONLY WHEN MOTOR SHAFT IS IN EXTREME LEFT POSITION  
该尺寸适用于将轴压于左侧时
- SHAFT END PLAY 0.05 ~ 0.5  
马达虚位(轴向串动) 0.05 ~ 0.5
- USABLE MACHINE SCREW LENGTH 4.0 MAX. FROM MOTOR MOUNTING SURFACE  
从大壳外端面开始, 可用机器螺钉长度 4.0 MAX
- SPECIFIED CONTENT WILL BE TYPEGRAPHICALED IN CONFORMITY TO GETUP BOOK OF MOTOR  
按马达仕样书印刷指定内容

Characteristic	DWN. BY	Li Jiang	DWN. DATE	21.11.15	TITLE	Motor Outline Drawing
Cpk > 1.33	CHK. BY		CHK. DATE		DWG. No.	WG-R476D-T04
Quality control	APP. BY		APP. DATE		Undeclared tolerance	± 0.3
Not mark	Not required	STANDARD MOTOR 标准微型马达有限公司	SCALE	1.5:1	Rev.	a