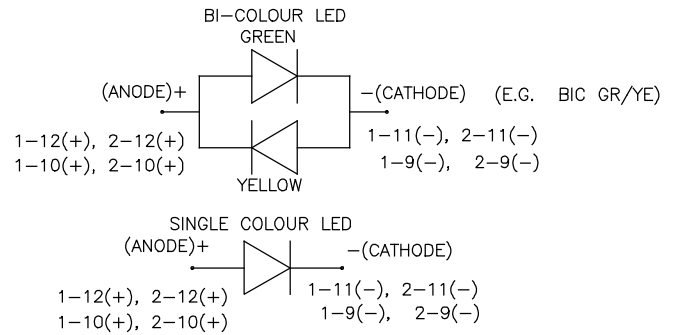
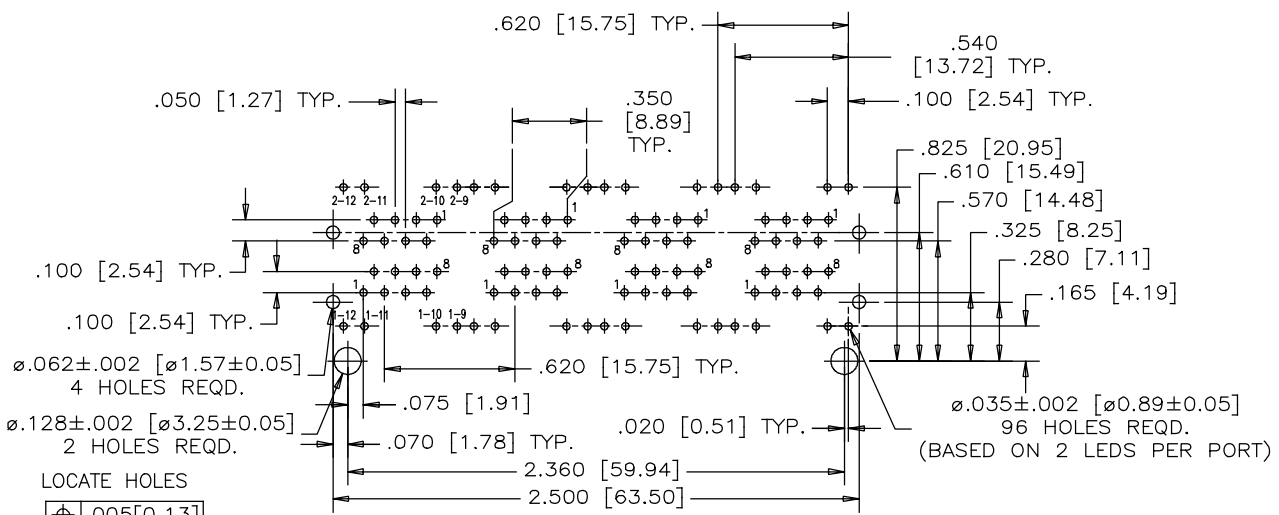
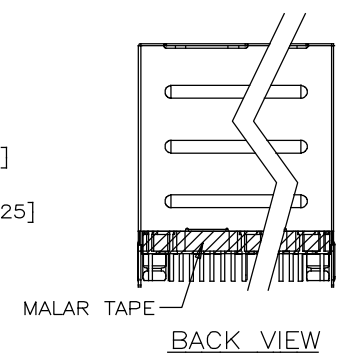
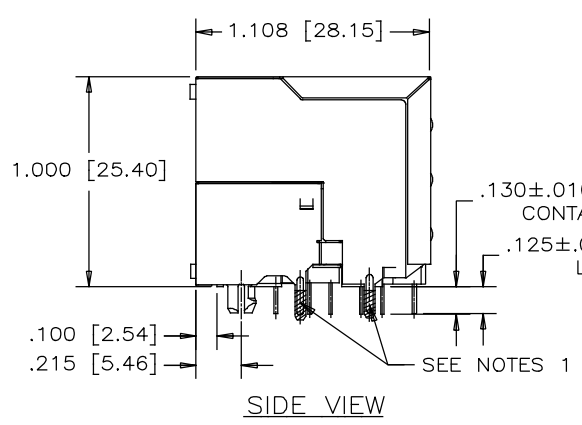
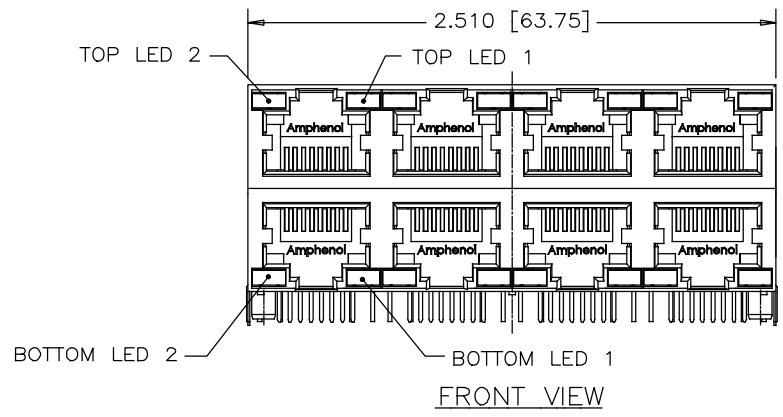


REVISIONS			
REV	DESCRIPTION, ECN, EAR NO.	DATE	APP'D
A	PROPOSAL	SEP23/19	L.CHAN



NOTES:

1. MATERIALS:

CONTACTS: PHOSPHOR BRONZE, SELECTIVE GOLD PLATING ON MATING SURFACES SEE PART NO. FOR THICKNESS. 50 MICROINCHES MIN. NICKEL OVERALL. 100 MICROINCHES MIN. MATTE TIN OR GOLD FLASH ON TAILS.

HOUSING: ENGINEERING PLASTIC. FLAMMABILITY RATING UL 94V-0, BLACK

SHIELD: COPPER ALLOY. PLATING: NICKEL WITH TIN FINISHED ON PCB TAILS.

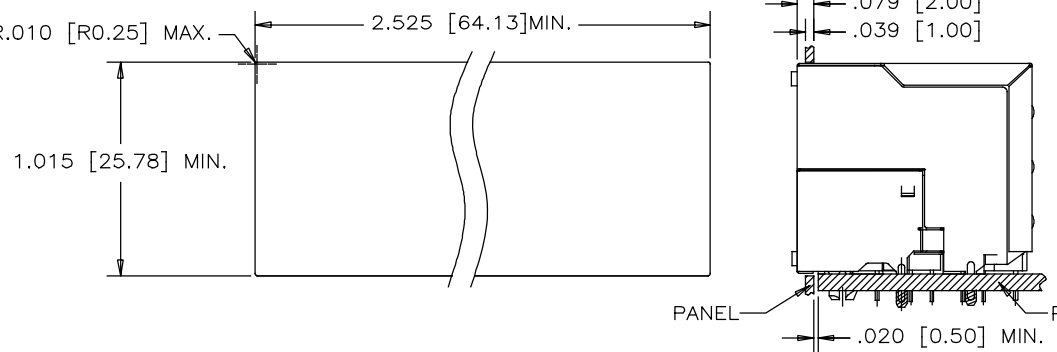
2. RECOMMENDED SOLDERING TEMPERATURE:

WAVE SOLDERING PEAKED AT 260°C FOR 10 SEC MAXIMUM

AMPHENOL PART NO.: RJSAE-XF8X-A8X

GOLD PLATING OPTION: REFER TO LED OPTIONS DRAWING FOR ORDERING CODES

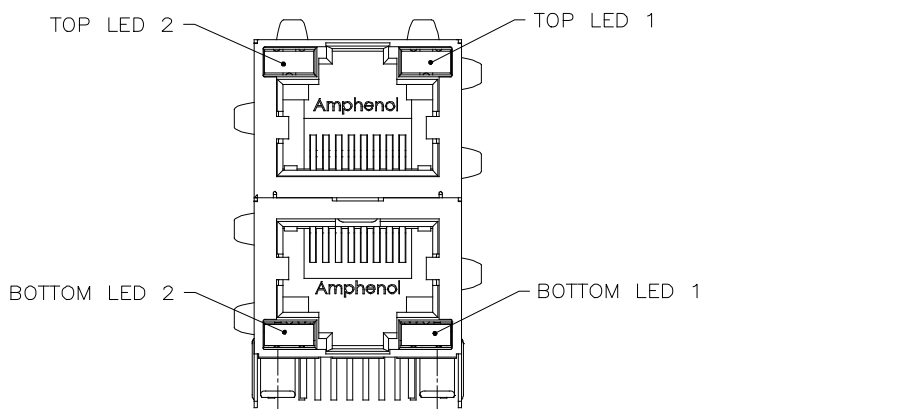
D=6u" GOLD PLATING
G=15u" GOLD PLATING
J=30u" GOLD PLATING
5=50u" GOLD PLATING



RECOMMENDED PANEL CUTOUT

UNLESS SPECIFIED OTHERWISE	DRAWN	RONNIE.C	SEP23/19	Amphenol Canada Corp. Commercial Products
PRIMARY UNITS INCHES	CHECKED	KELVIN.T	SEP23/19	
SECONDARY MILLIMETERS	M.E. APP'D			STACKABLE MULTI-PORT MODULAR JACK, 8 POS. 8 CONTACTS, 2 LEDS PER PORT, SHIELDED WITHOUT TAB, .130INCH CONTACT TAILS -RoHS COMPLIANT
REFERENCE IN PARENTHESES	Q.A. APP'D			
GENERAL TOLERANCES	DWG APP'D			DWG NO. P-RJSAE-XF8X-A8X
1 DECIMAL PLACE	ENG. REL NO.			
2 DECIMAL PLACES	REF.			REV A
3 DECIMAL PLACES ±.015	THIRD ANGLE PROJECTION			CODE ID NO. 03554 DWG SIZE X SCALE N/A SHEET 1 OF 1
ANGULAR DEGREES ±1.5°	DO NOT SCALE DRAWING			

THIS DOCUMENT CONTAINS PROPRIETARY INFORMATION AND SUCH INFORMATION MAY NOT BE DISCLOSED TO OTHERS FOR ANY PURPOSE OR USED FOR MANUFACTURING PURPOSES WITHOUT WRITTEN PERMISSION FROM AMPHENOL CANADA CORP.



EXAMPLE:1

PART NUMBER RJSAE-***X-**
 SEE NOTE 2 (pointing to ***X)
 SEE NOTE 2 (pointing to **)
 LED COLOR CODE

EXAMPLE:2

PART NUMBER RJSAE-***U-**-XX
 SEE NOTE 2 (pointing to ***U)
 SEE NOTE 2 (pointing to **)
 SEE NOTE 2 (pointing to XX)
 SPECIAL CODE FOR TOP & BOTTOM LEDS CONFIGURATION
 BOTTOM ASSY LED (SAME AS STD CODE)
 TOP ASSY LED (SAME AS STD CODE)

CODE	LED 2 (LEFT)	LED 1 (RIGHT)	CODE	LED 2 (LEFT)	LED 1 (RIGHT)	CODE	LED 2 (LEFT)	LED 1 (RIGHT)
0	BLOCKED	BLOCKED	9	GREEN	BLOCKED	J	BIC RD/GR	YELLOW
1	YELLOW	GREEN	A	BIC GR/YE	BIC GR/YE	K	YELLOW	BIC GR/OR
2	BLOCKED	GREEN	B	BIC RD/GR	BIC RD/GR	L	BIC GR/YE	RED
3	YELLOW	BLOCKED	C	BIC RD/GR	BIC GR/YE	M	RED	YELLOW
4	GREEN	YELLOW	D	GREEN	BIC GR/YE	N	BIC GR/RD	BIC GR/YE
5	GREEN	GREEN	E	YELLOW	BIC GR/YE	P	GREEN	BIC RD/GR
6	YELLOW	YELLOW	F	BIC GR/YE	YELLOW	R	BIC GR/OR	GREEN
7	RED	GREEN	G	BIC GR/OR	BIC GR/OR	T	RED	RED
8	GREEN	RED	H	BIC GR/YE	GREEN	V	BIC RD/GR	GREEN
						W	ADDITIONAL OPTIONS	
						U	SPECIAL CODE FOR TOP & BOTTOM LEDS CONFIGURATION	

EXAMPLE:3

PART NUMBER RJSAE-***W-**X
 SEE NOTE 2 (pointing to ***W)
 SEE NOTE 2 (pointing to **)
 SEE NOTE 2 (pointing to X)
 ADDITIONAL LED COLOR CODE
 DENOTES ADDITIONAL LED OPTIONS TO BE USED

CODE	LED 2 (LEFT)	LED 1 (RIGHT)	CODE	LED 2 (LEFT)	LED 1 (RIGHT)	CODE	LED 2 (LEFT)	LED 1 (RIGHT)
0	DO NOT USE		5	BLOCKED	YELLOW	A	LOWC YE	LOWC YE
1	RED	BLOCKED	6	RED	BIC RD/GR	B	LOWC YE	LOWC GR
2	BIC GR/OR	YELLOW	7			C	LOWC GR	LOWC YE
3	YELLOW	RED	8	BIC RD/GR	BLOCKED	D	LOWC GR	LOWC GR
4	BLOCKED	RED	9	BIC GR/YE	BLOCKED	M	LOWC RD	LOWC YE
						N	GREEN	BIC GR/OR
						E	GREEN	ORANGE
						F	ORANGE	GREEN
						G	BIC YE/GR	BIC YE/GR
						P	BIC RD/YE	GREEN
						R	BIC RD/YE	BIC RD/YE
						T	BIC GR/YE	BIC RD/GR
						H	BLUE	RED

EXAMPLE:4

PART NUMBER RJSAE-***X-***XX*
 SEE NOTE 2 (pointing to ***X)
 SEE NOTE 2 (pointing to ***XX*)
 SEE NOTE 2 (pointing to *)
 LED COLOR CODE THE SAME AS EXAMPLE 1, 2, 3
 LED COLOR CODE THE SAME AS EXAMPLE 1, 2, 3

LED SPECIFICATIONS:

FORWARD VOLTAGE: 1.8~3.4 VOLTS.
 REVERSE VOLTAGE: 5.0 VOLTS MAX.
 LUMINOUS INTENSITY: 3~60 mcd
 (AT If=20mA)
 STORAGE TEMPERATURE: -40° TO 85° C
 PLATING ON TAILS: TIN OR TIN/COPPER ALLOY OVER SILVER

PRIMARY COLOR FOR BI-COLOR

LEDS IN STANDARD ANODE/
 CATHODE CONFIGURATION IS:
 RED-GREEN= RED
 RED-YELLOW= RED
 GREEN-YELLOW= GREEN
 GREEN-ORANGE= GREEN

LEGEND

BIC=BI-COLOR LED
 LOWC=LOW CURRENT LED
 YE=YELLOW
 GR=GREEN
 RD=RED
 OR=ORANGE



NOTES:

1. THE TWO DIGITS PRECEDING THE ADDITIONAL LED CODE MUST BE USED IN THE PART NUMBER, WHEN ORDERING ANY OF THE ADDITIONAL LED OPTIONS.
2. '*' REPRESENT DIFFERENT OPTION OF CONNECTOR, DETAIL OPTION PLEASE SEE RELEVANT CONNECTOR DRAWING.

REVISIONS			
REV	DESCRIPTION, ECN, EAR NO.	DATE	APP'D
H	PROPOSAL	JUL04/12	L.CHAN
J	PROPOSAL	MAR03/14	L.CHAN
K	ADD NEW COLOR OPTION	FEB09/17	L.CHAN
L	REPLACE THE DRAWING FRAME	JUL06/18	L.CHAN
M	FIX THE ERROR FOR LED SPEC.	SEP11/19	L.CHAN

UNLESS SPECIFIED OTHERWISE		DRAWN PAUL WANG	JUL22/05	Amphenol Canada Corp. Commercial Products	
PRIMARY UNITS		CHECKED LAWRENCE C	JUL22/05		
SECONDARY		M.E. APP'D		LED OPTIONS FOR RJSAE, MULTI-PORT CONNECTORS - RoHS COMPLIANT	
REFERENCE IN PARENTHESES		Q.A. APP'D			
GENERAL TOLERANCES		DWG APP'D			
1 DECIMAL PLACE		ENG. REL NO.		DWG NO.	
2 DECIMAL PLACES		REF.		P-RJSAE-LEDS	
3 DECIMAL PLACES		THIRD ANGLE PROJECTION		REV M	
ANGULAR DEGREES		DO NOT SCALE DRAWING		CODE ID NO. 03554 DWG SIZE N/A SCALE N/A SHEET 1 OF 1	