

NUMBER OF CONTACTS	"A" Inch (mm)	"B" Inch (mm)	"C" Inch (mm)	"D" Inch (mm)	"E" Inch (mm)
15	1.213 (30.80)	.984 (24.99)	.643 (16.34)	.090 (2.29)	.756 (19.20)
26	1.543 (39.20)	1.312 (33.32)	.972 (24.70)	.090 (2.29)	1.091 (27.70)
44	2.087 (53.00)	1.852 (47.04)	1.512 (38.40)	.090 (2.29)	1.618 (41.10)
62	2.732 (69.40)	2.500 (63.50)	2.157 (54.80)	.095 (2.41)	2.256 (57.30)
78	2.638 (67.00)	2.406 (61.10)	2.055 (52.20)	.095 (2.41)	2.169 (55.10)

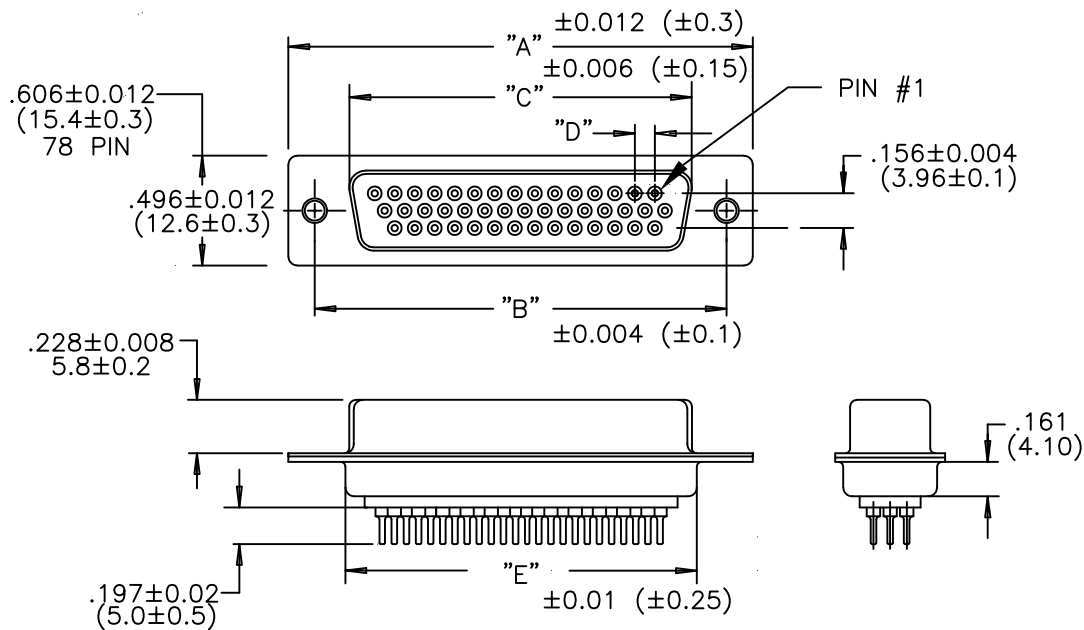
NOTE:

MATERIAL  
HOUSING: PBT UL94V-0, BLACK  
230°C PROCESS TEMP  
CONTACT: COPPER ALLOY  
SHELL: STEEL

FINISH  
CONTACT: FULL GOLD FLASH  
SHELL: NICKEL

ELECTRICAL  
RATED CURRENT: 3A  
DWV: 500VAC RMS FOR 1 MIN  
INSULATOR RESISTANCE: 1000 MΩhms MIN.  
CONTACT RESISTANCE: 15 mΩhms MAX.

ENVIRONMENT  
OPERATION TEMPERATURE: -50°C TO +100°C



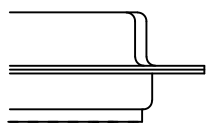
197-YYY-Y13LYY1

SERIES \_\_\_\_\_  
NUMBER OF CONTACTS \_\_\_\_\_  
GENDER \_\_\_\_\_  
1 = MALE  
2 = FEMALE (NO GROUND INDENTS)  
PC MOUNT \_\_\_\_\_  
3 = NICKEL SHELL \_\_\_\_\_

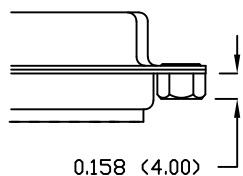
HARDWARE OPTIONS: \_\_\_\_\_  
00 = .120 MOUNTING HOLE  
55 = 4-40 CLINCH NUT (CN)  
03 = 4-40 CLINCH NUT (CN) && 4-40 JACK SCREW

PLATING: \_\_\_\_\_  
1 = GOLD FLASH

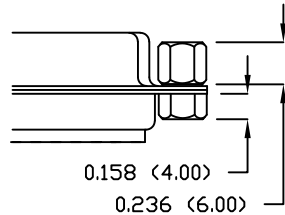
00 ..... THRU HOLE



55 ..... CN



03 ..... CN // JACK SCREW



UNITS = inch (mm)

DO NOT SCALE FROM DRAWING



THESE DRAWINGS AND SPECIFICATIONS ARE THE PROPERTY OF NorComp AND SHALL NOT BE REPRODUCED, COPIED OR USED AS THE BASIS FOR THE MANUFACTURE OR SALE OF APPARATUS WITHOUT WRITTEN PERMISSION.

DRAWN:  
P. JENKINS

DATE:  
09/15/2005

NorComp

SCALE:  
NTS

SHEET OF  
1 1

REV  
5

DWG NO.

197-YYY-213LYY1