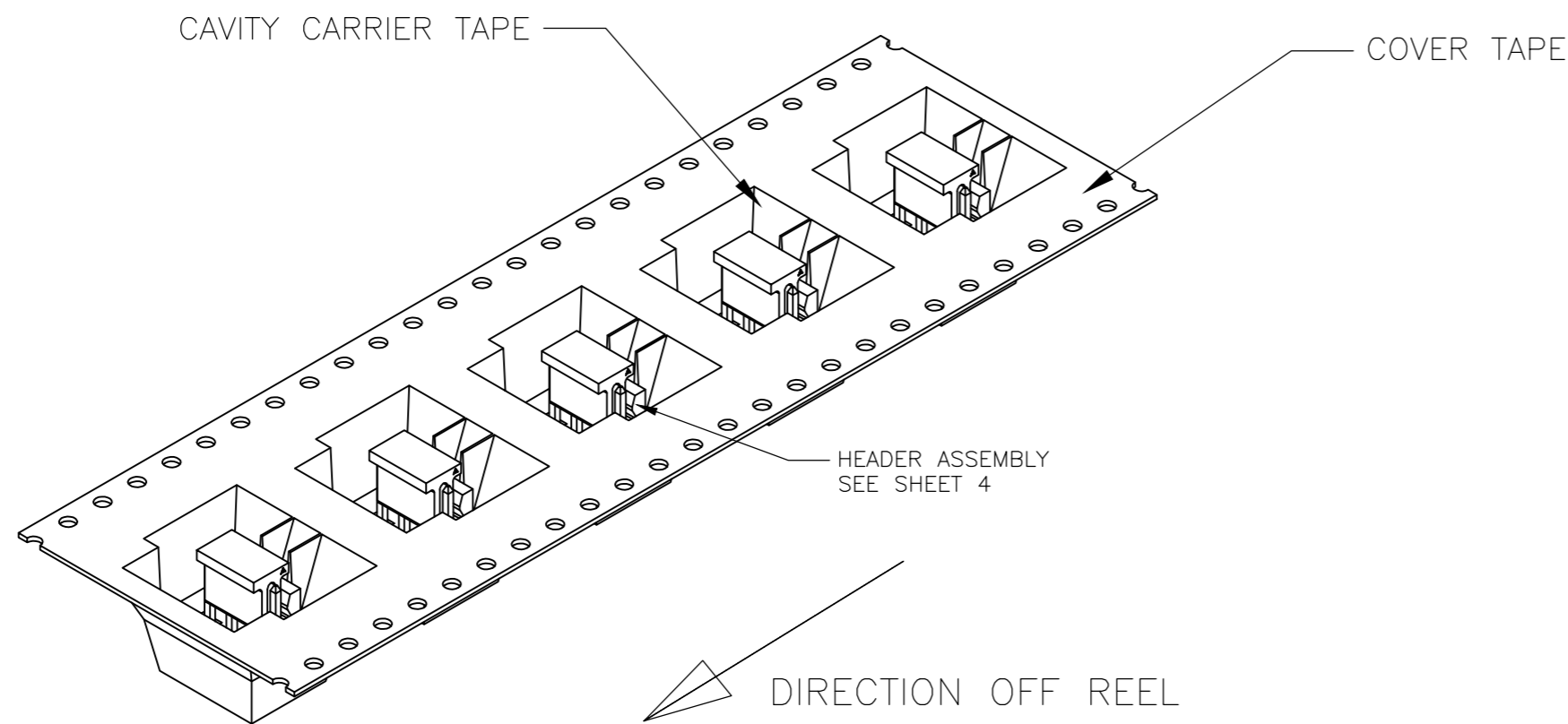
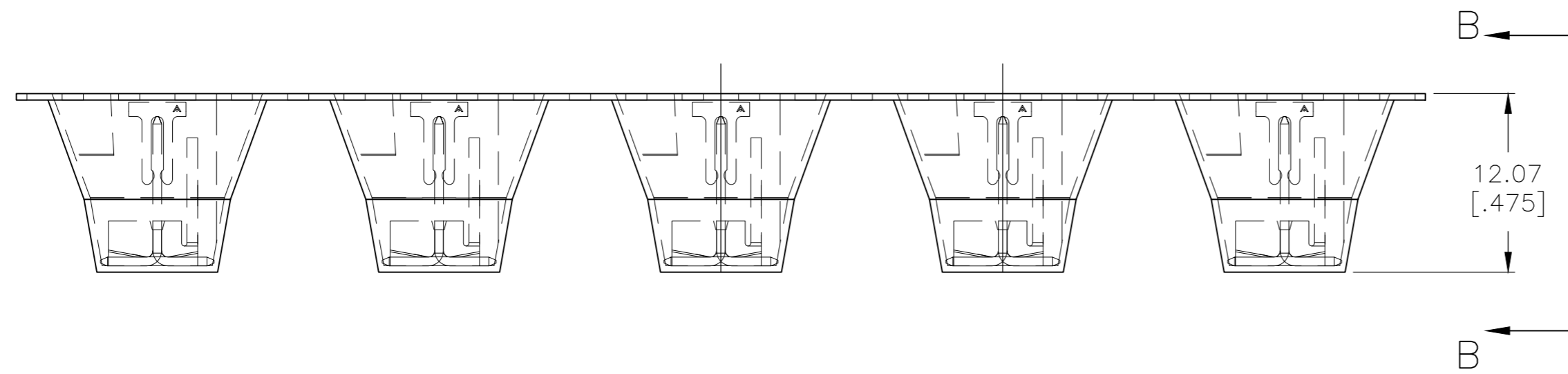
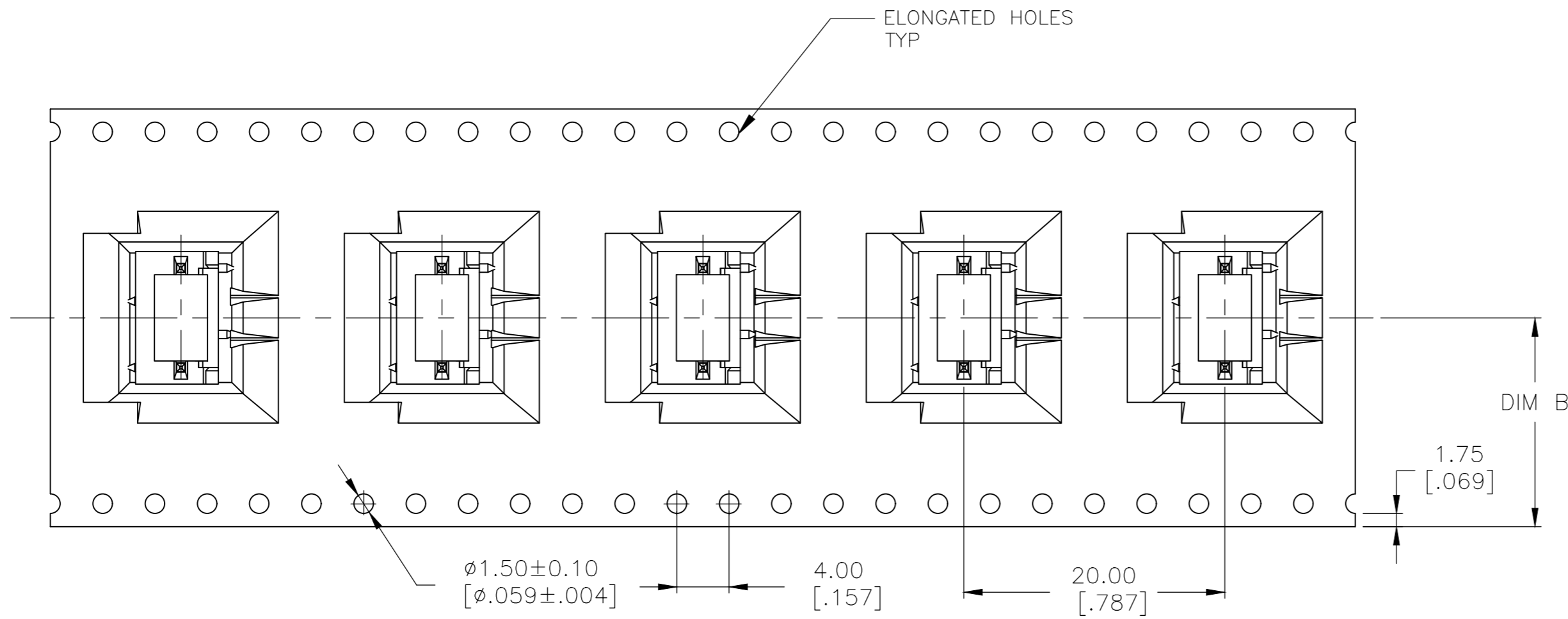
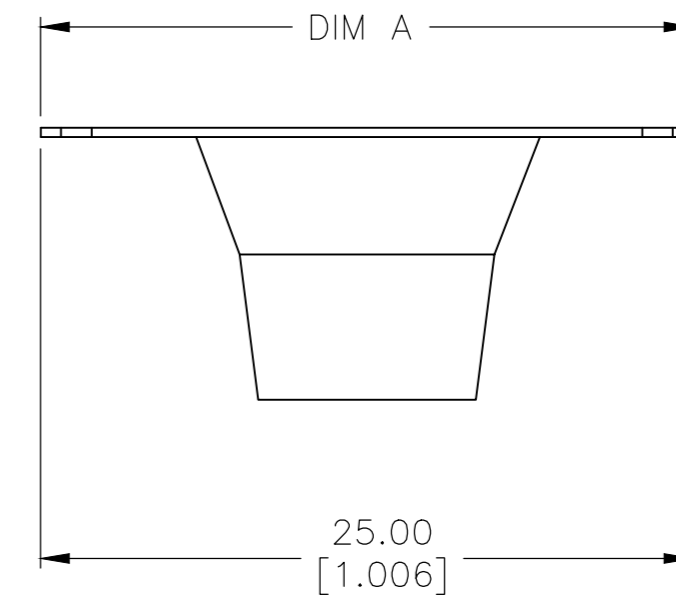


THIS DRAWING IS UNPUBLISHED. RELEASED FOR PUBLICATION  
 © COPYRIGHT - By - ALL RIGHTS RESERVED.

| REVISIONS |     |                           |           |     |      |
|-----------|-----|---------------------------|-----------|-----|------|
| P         | LTR | DESCRIPTION               | DATE      | DWN | APVD |
| B5        |     | REVISED PER ECR-19-014333 | 03OCT2019 | BDA | SW   |



- 1 MATERIAL:  
 HEADER- NYLON 4/6, HIGH TEMPERATURE, UL94V-0  
 POST: COPPER ALLOY  
 CAVITY CARRIER TAPE: BLACK CONDUCTIVE POLYCARBONATE  
 COVER TAPE: POLYESTER FILM TAPE.
- 2 FINISH:  
 HOUSING: COLOR, BLACK  
 POST: GOLD PLATED.
- 3 POSTS TO WITHSTAND 13 NEWTONS [3 LBS] MIN AXIAL FORCE IN THIS DIRECTION WITHOUT DISLODGING, BEFORE SOLDERING.
- 4 POSTS SOLDER TAILS MUST COMPLY WITH AMP SOLDERABILITY SPEC 109-11-2.
- 5 MEASURED AT  $\square A$
- 6 APPLIES WHEN HEADER IS HELD STRAIGHT.
- 7 COORDINATE DIMENSION APPLIES FROM CENTER OF ACTUAL FEATURE.
- 8 DIMENSIONS APPLY TO THE COMPONENT SIDE OF BOARD.
- 9 MAXIMUM TEMPERATURE EXPOSURE DURING REFLOW SOLDERING NOT TO EXCEED 280°C [536°F]
- 10 HEADERS ARE SUPPLIED ON A 330.2mm [13 INCH] DIAMETER REEL, WITH 225 PARTS PER REEL. THE CAVITY CARRIER TAPE HOLDS 1 PART PER POCKET, ORIENTED AS SHOWN.
- 11 AMP LOGO, UL AND CSA TRADEMARKS TO APPEAR ON THIS SURFACE.

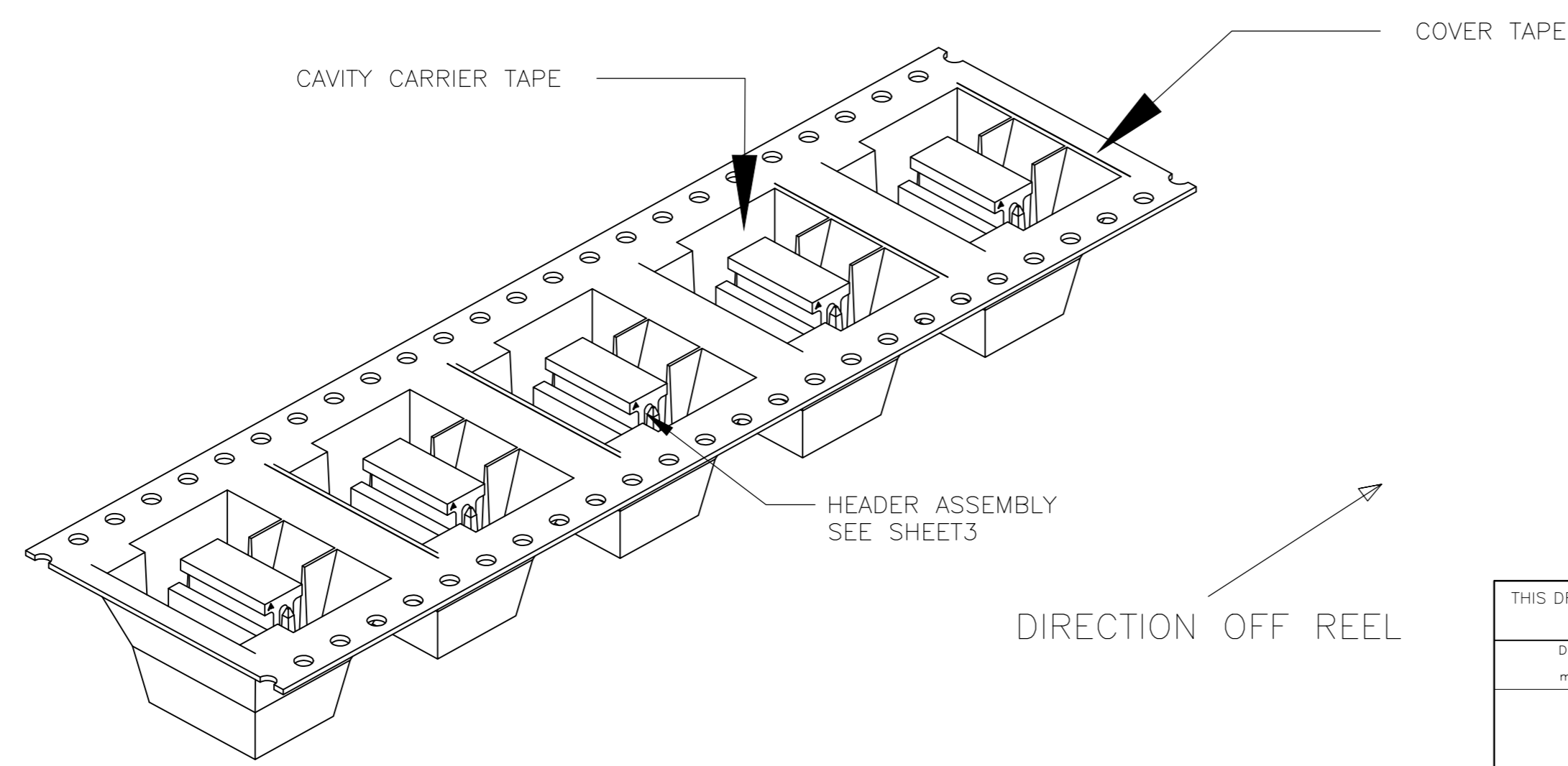
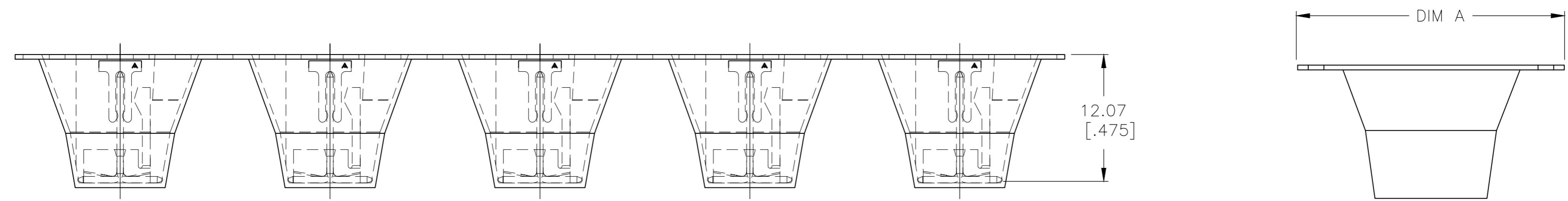
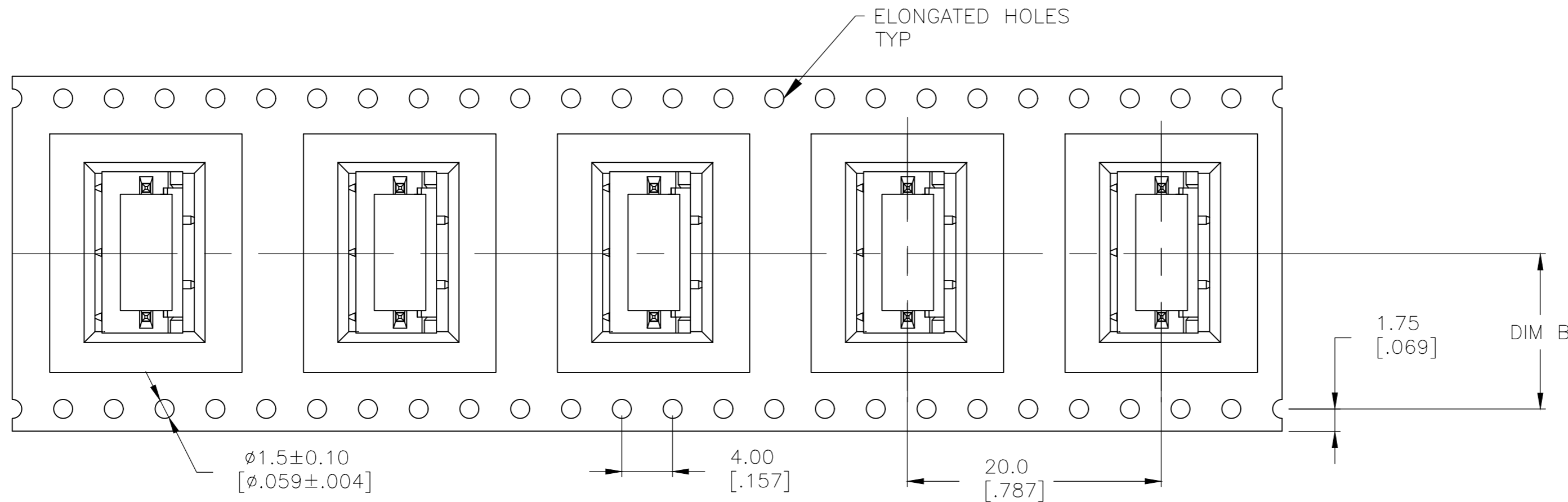


|              |               |             |
|--------------|---------------|-------------|
| 20.20 [.795] | 44.00 [1.732] | 3-1744163-7 |
| DIM "B"      | DIM "A"       | PART NO     |

|  |  |                              |   |                    |
|--|--|------------------------------|---|--------------------|
| THIS DRAWING IS A CONTROLLED DOCUMENT. |  | DWN<br>jr ruth<br>30MAR11    | TE Connectivity   |                    |
| DIMENSIONS:<br>mm [INCHES]             |  | CHK<br>SAM MACE<br>30MAR11   | NAME<br>MTA-100 HEADER ASSY, SURFACE MOUNT,<br>FRICTION LOCK, TAPE LOADED W/CAP |                    |
| TOLERANCES UNLESS OTHERWISE SPECIFIED: |  | APVD<br>SAM MACE<br>30MAR11  | PRODUCT SPEC<br>108-1050  |                    |
| 0 PLC ± -                              |  | APPLICATION SPEC<br>114-1019 | SIZE<br>A2  | CAGE CODE<br>00779 |
| 1 PLC ± -                              |  | WEIGHT<br>-                  | DRAWING NO<br>C=1744163   | RESTRICTED TO<br>- |
| 2 PLC ± -                              |  | CUSTOMER DRAWING             |   |                    |
| 3 PLC ± .015                           |  | SCALE<br>3:1                 | SHEET<br>1 of 5   | REV<br>B5          |
| 4 PLC ± -                              |  |                              |   |                    |
| ANGLES ± 1°                            |  |                              |   |                    |
| FINISH<br>-                            |  |                              |   |                    |

THIS DRAWING IS UNPUBLISHED. RELEASED FOR PUBLICATION  
 © COPYRIGHT - By - ALL RIGHTS RESERVED.

| REVISIONS |     |             |      |     |      |
|-----------|-----|-------------|------|-----|------|
| P         | LTR | DESCRIPTION | DATE | DWN | APVD |
| -         | -   | SEE SHEET 1 | -    | -   | -    |



|              |               |             |
|--------------|---------------|-------------|
| 14.20 [.559] | 32.00 [1.260] | 3-1744163-4 |
| DIM "B"      | DIM "A"       | PART NO     |

|   |  |                              |   |                       |
|---|--|------------------------------|---|-----------------------|
| THIS DRAWING IS A CONTROLLED DOCUMENT.  |  | DWN<br>jr ruth<br>30MAR11    | TE Connectivity   |                       |
| DIMENSIONS:<br>mm [INCHES]  |  | CHK<br>SAM MACE<br>30MAR11   | NAME<br>MTA-100 HEADER ASSY, SURFACE MOUNT,<br>FRICTION LOCK, TAPE LOADED W/CAP |                       |
| TOLERANCES UNLESS OTHERWISE SPECIFIED:<br>0 PLC ± -<br>1 PLC ± -<br>2 PLC ± -<br>3 PLC ± .015<br>4 PLC ± -<br>ANGLES ± 1° |  | APVD<br>SAM MACE<br>30MAR11  | PRODUCT SPEC<br>108-1050  |                       |
| MATERIAL  |  | APPLICATION SPEC<br>114-1019 | SIZE<br>A2  | RESTRICTED TO<br>-    |
| FINISH  |  | WEIGHT                       | CAGE CODE<br>00779  | DRAWING NO<br>1744163 |
|   |  | CUSTOMER DRAWING             | SCALE<br>3:1  | SHEET<br>2 of 5       |
|   |  |                              | REV<br>B5   |                       |

THIS DRAWING IS UNPUBLISHED. RELEASED FOR PUBLICATION  
 © COPYRIGHT - By - ALL RIGHTS RESERVED.

| REVISIONS |     |             |      |     |      |
|-----------|-----|-------------|------|-----|------|
| P         | LTR | DESCRIPTION | DATE | DWN | APVD |
| -         | -   | SEE SHEET 1 | -    | -   | -    |

D

D

C

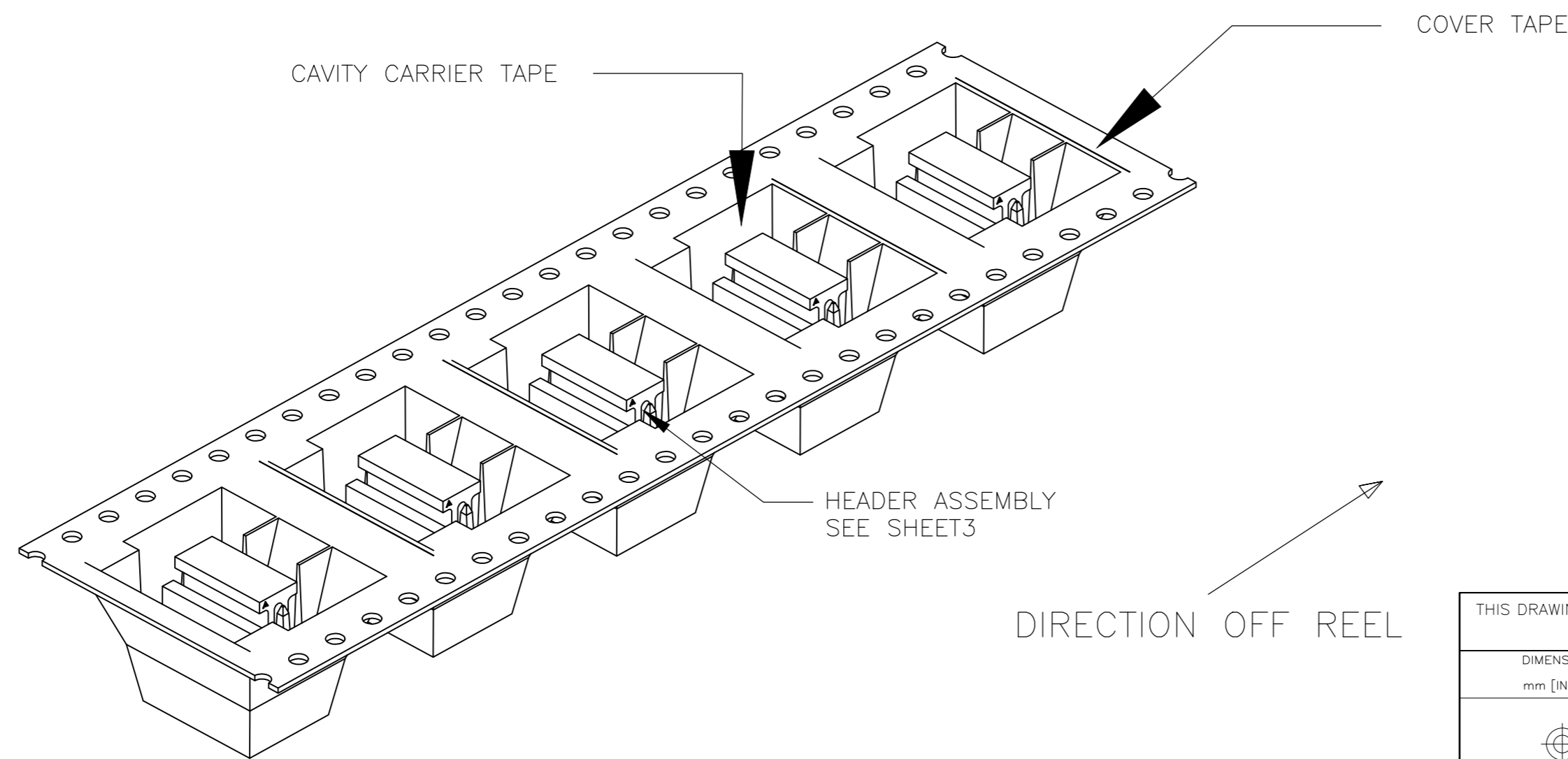
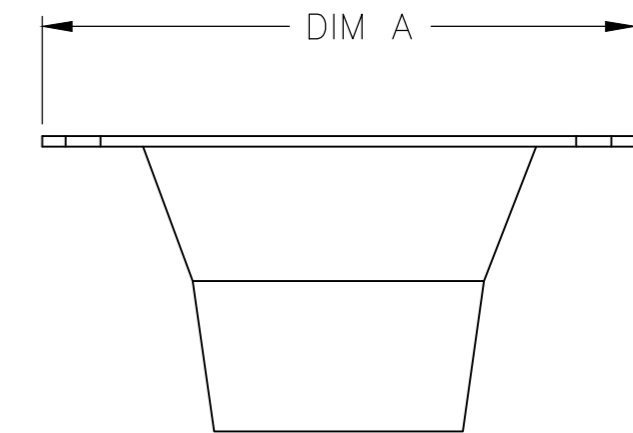
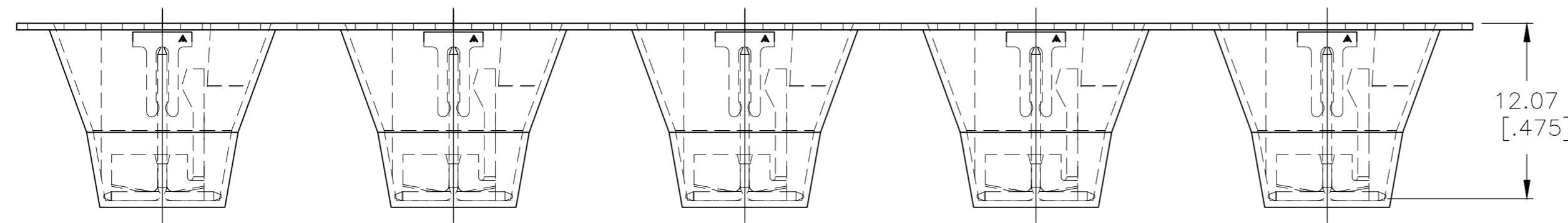
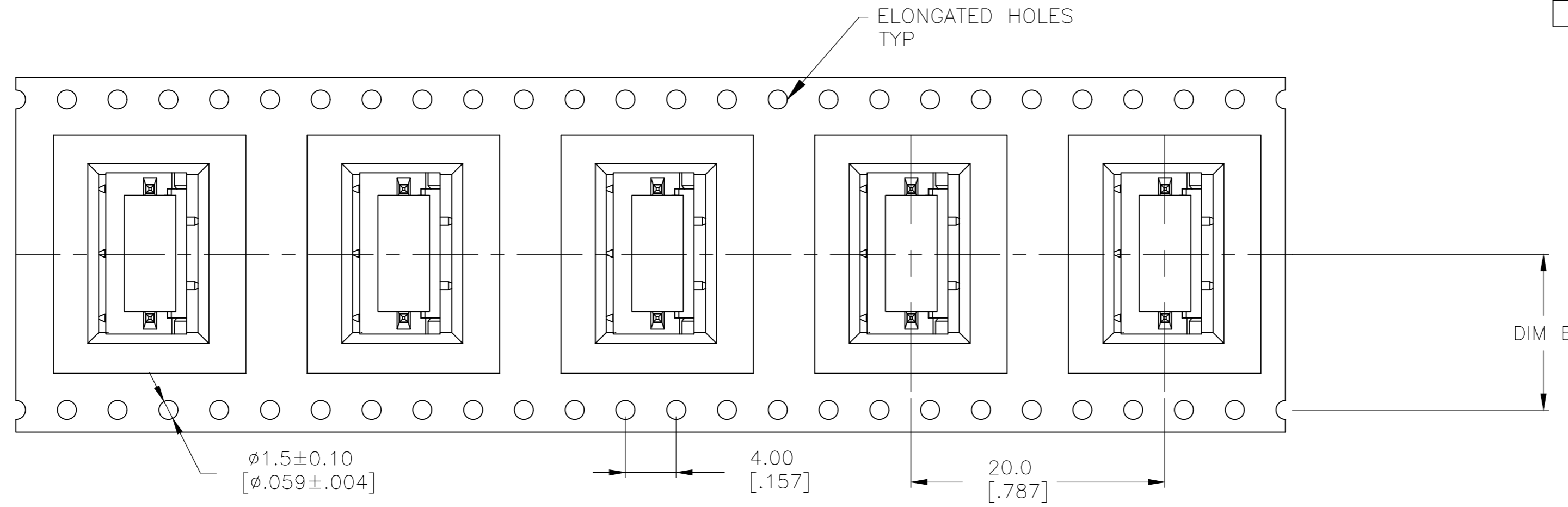
C

B

B

A

A



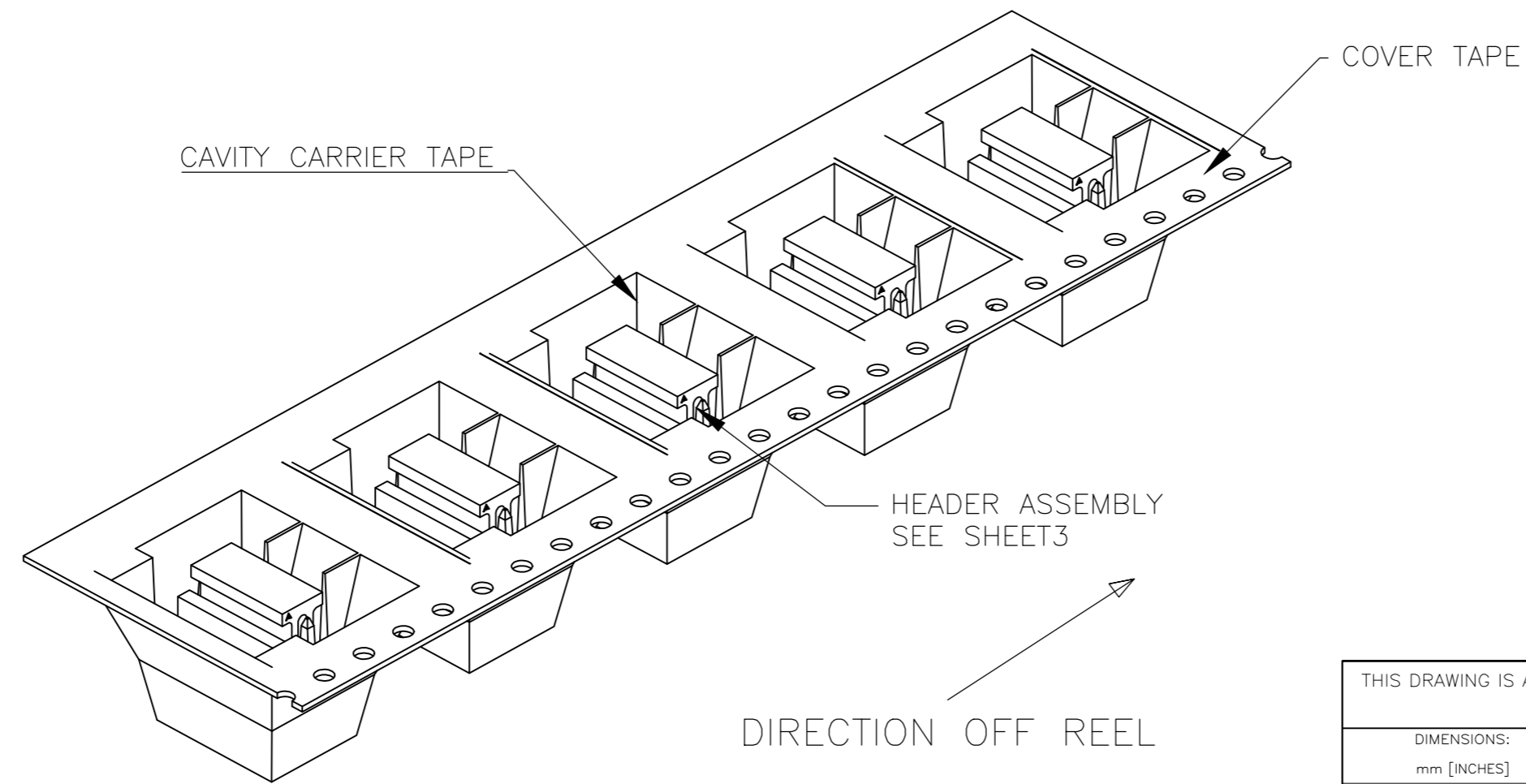
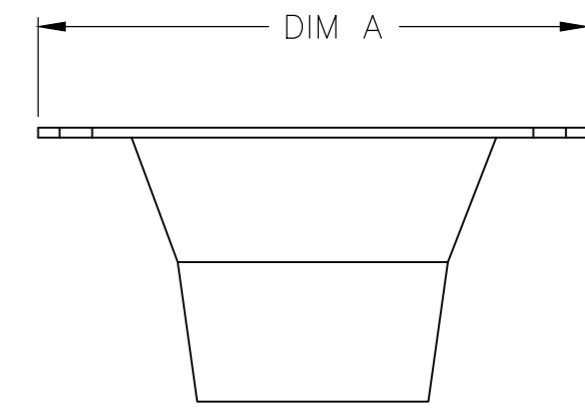
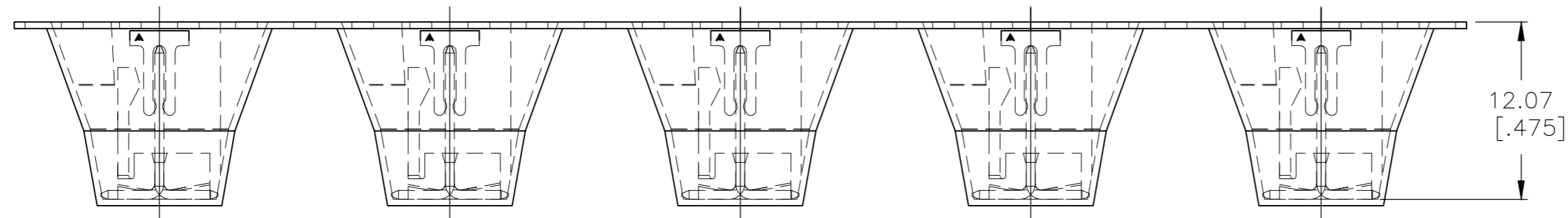
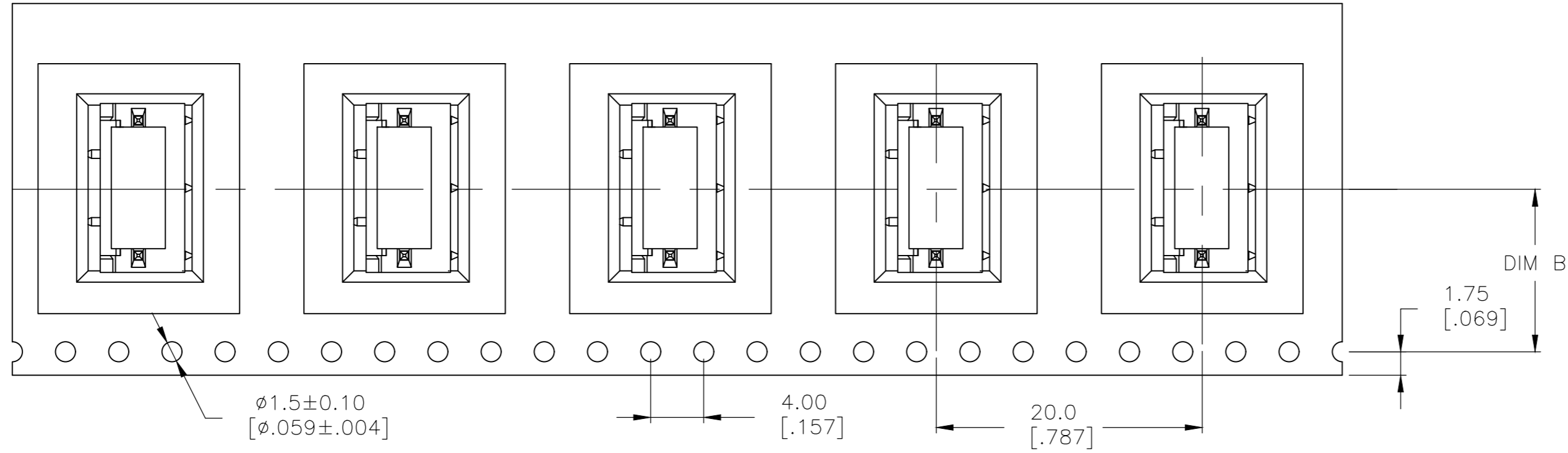
|              |               |             |
|--------------|---------------|-------------|
| 12.20 [.480] | 24.00 [0.945] | 3-1744163-3 |
| DIM "B"      | DIM "A"       | PART NO     |

|   |  |                              |   |                       |
|---|--|------------------------------|---|-----------------------|
| THIS DRAWING IS A CONTROLLED DOCUMENT.  |  | DWN<br>jr_ruth<br>30MAR11    | TE Connectivity   |                       |
| DIMENSIONS:<br>mm [INCHES]  |  | CHK<br>SAM MACE<br>30MAR11   | NAME<br>MTA-100 HEADER ASSY, SURFACE MOUNT,<br>FRICTION LOCK, TAPE LOADED W/CAP |                       |
| TOLERANCES UNLESS OTHERWISE SPECIFIED:<br>0 PLC ± -<br>1 PLC ± -<br>2 PLC ± -<br>3 PLC ± .015<br>4 PLC ± -<br>ANGLES ± 1° |  | APVD<br>SAM MACE<br>30MAR11  | PRODUCT SPEC<br>108-1050  |                       |
| MATERIAL  |  | APPLICATION SPEC<br>114-1019 | SIZE<br>A2  | RESTRICTED TO         |
| FINISH  |  | WEIGHT                       | CAGE CODE<br>00779  | DRAWING NO<br>1744163 |
|   |  | CUSTOMER DRAWING             | SCALE<br>3:1  | SHEET<br>3 of 5       |
|   |  |                              | REV<br>B5   |                       |

1744163

THIS DRAWING IS UNPUBLISHED. RELEASED FOR PUBLICATION  
 © COPYRIGHT - By - ALL RIGHTS RESERVED.

| REVISIONS |     |             |      |      |
|-----------|-----|-------------|------|------|
| P         | LTR | DESCRIPTION | DATE | APVD |
| -         | -   | SEE SHEET 1 | -    | -    |

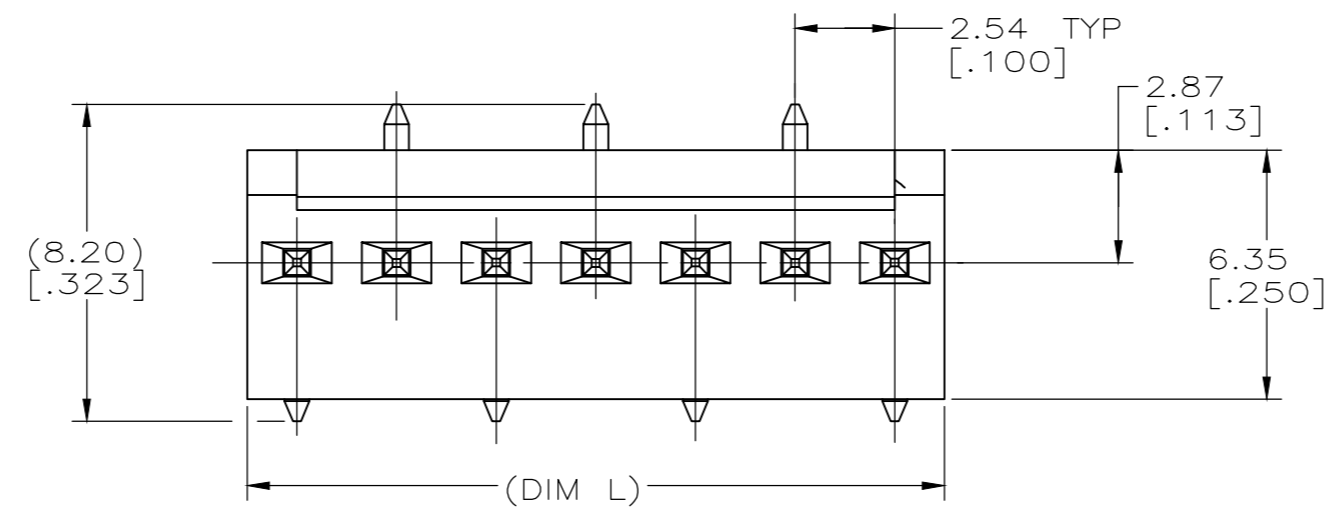


|             |              |             |
|-------------|--------------|-------------|
| 11.5 [.453] | 24.00 [.945] | 3-1744163-2 |
| DIM "B"     | DIM "A"      | PART NO     |

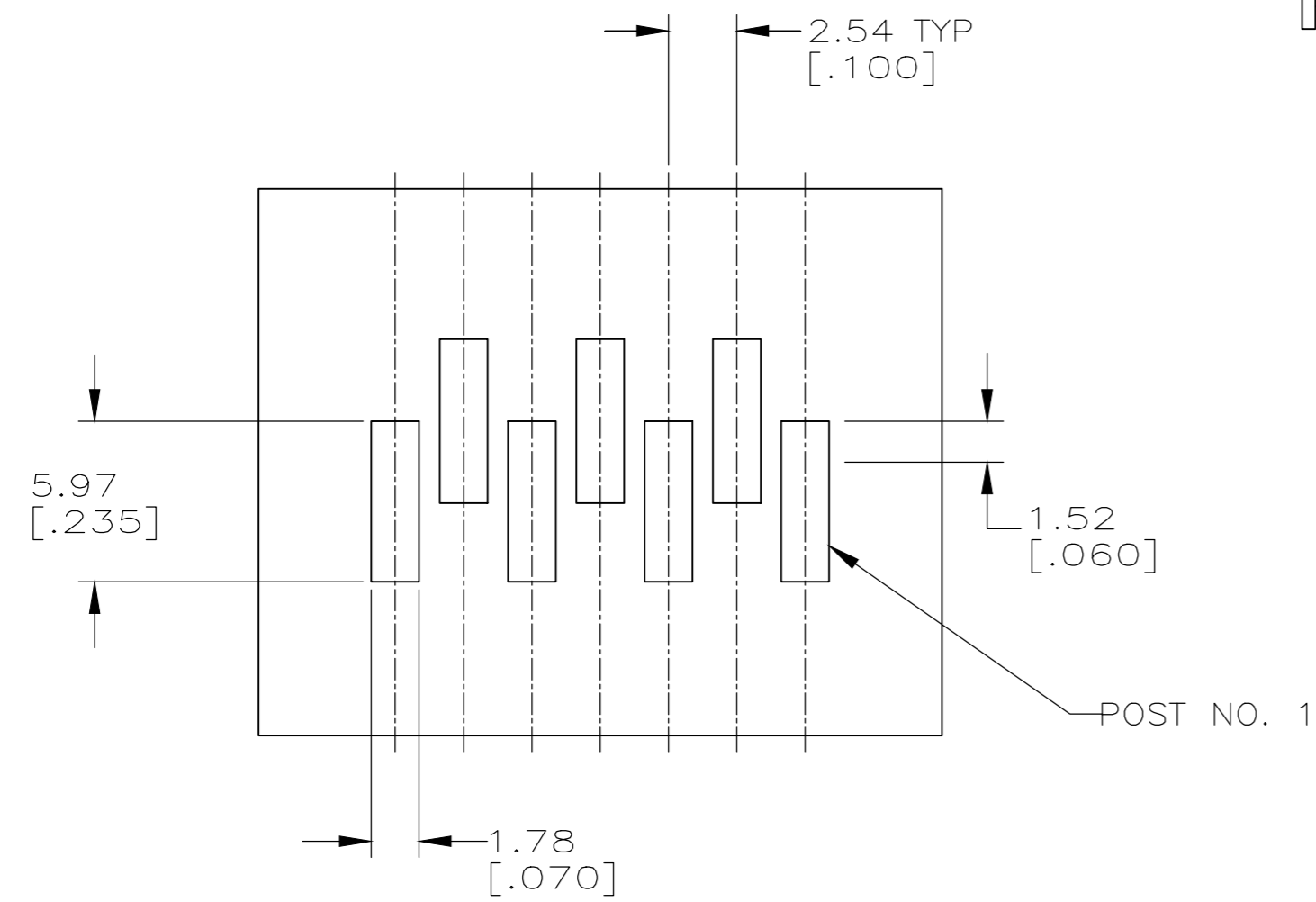
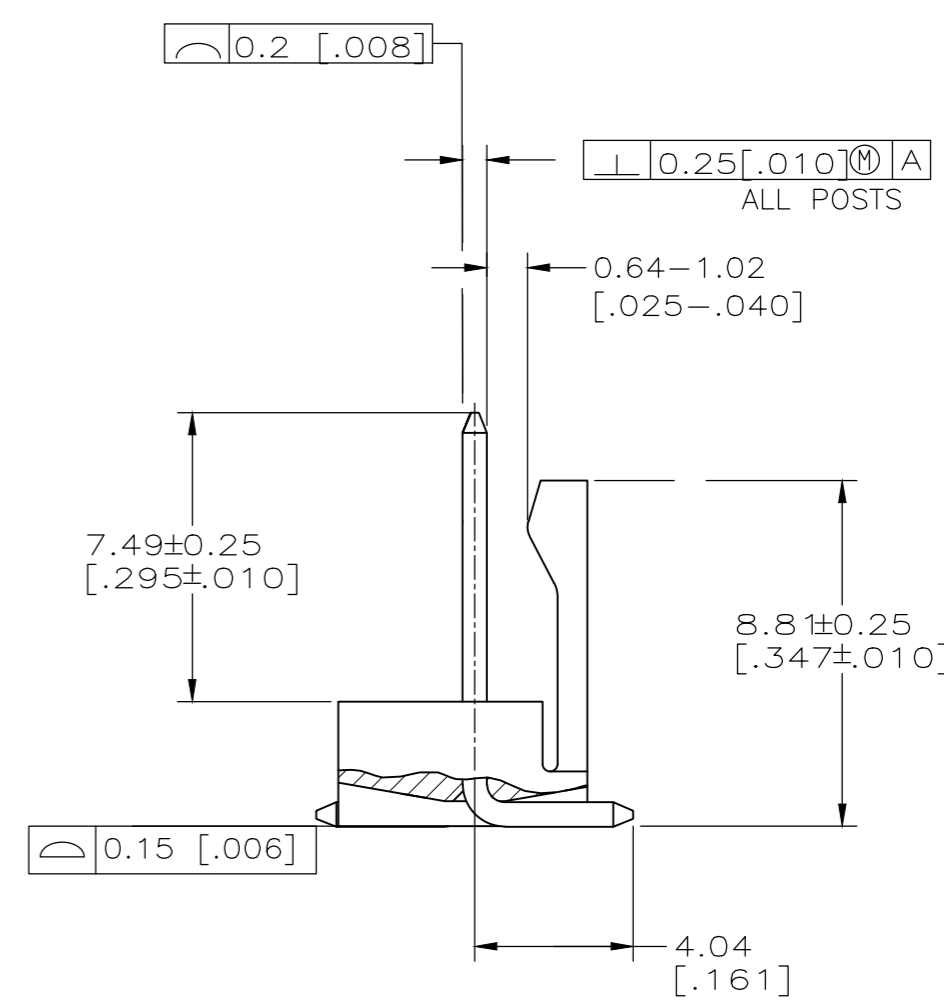
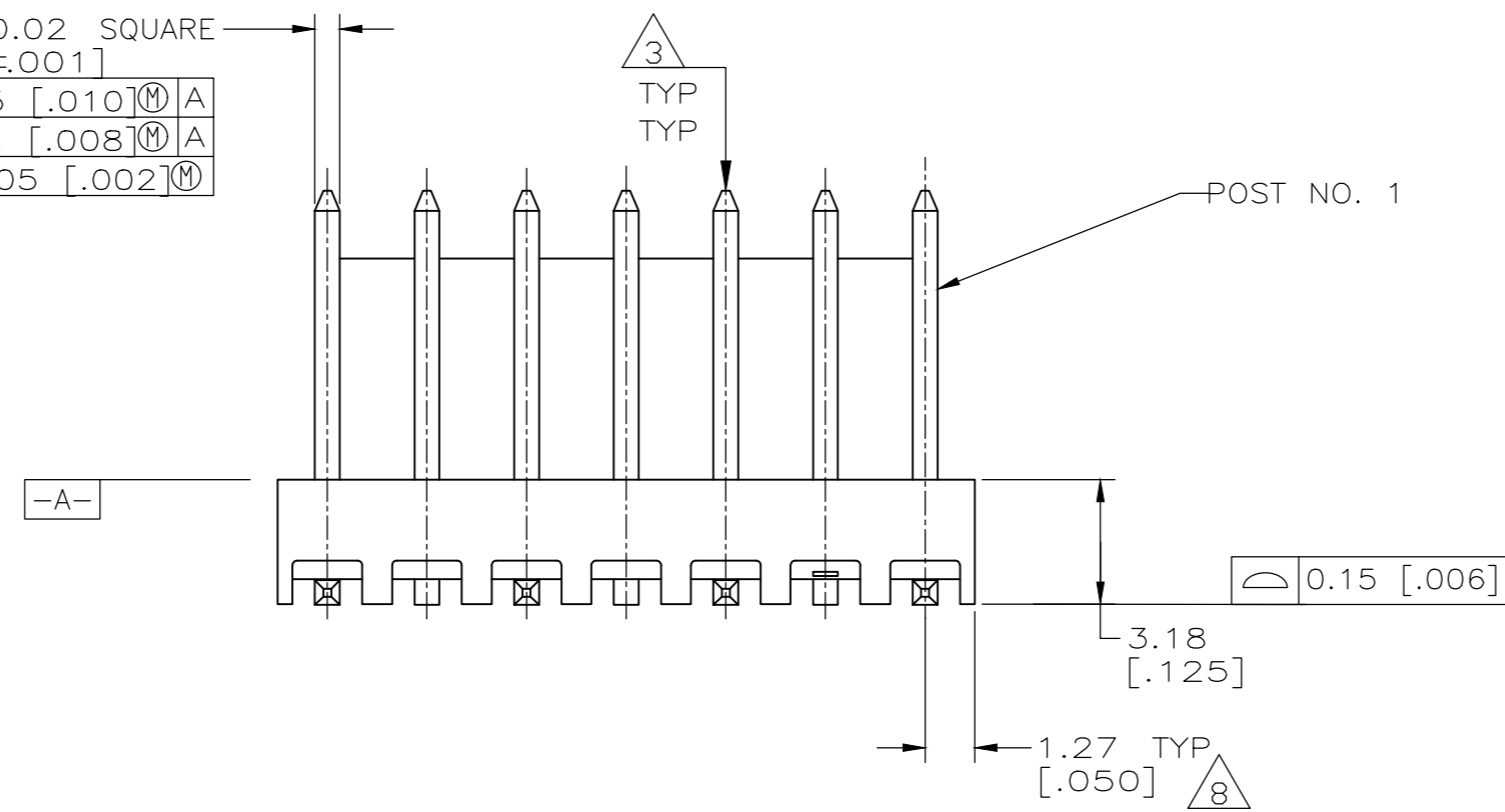
|  |  |                             |   |               |
|--|--|-----------------------------|---|---------------|
| THIS DRAWING IS A CONTROLLED DOCUMENT. |  | DWN<br>jr ruth<br>30MAR11   | TE Connectivity   |               |
| DIMENSIONS:<br>mm [INCHES]             |  | CHK<br>SAM MACE<br>30MAR11  |   |               |
| TOLERANCES UNLESS OTHERWISE SPECIFIED: |  | APVD<br>SAM MACE<br>30MAR11 | NAME  |               |
| 0 PLC ± -                              |  | PRODUCT SPEC                | MTA-100 HEADER ASSY, SURFACE MOUNT,<br>FRICTION LOCK, TAPE LOADED W/CAP |               |
| 1 PLC ± -                              |  | APPLICATION SPEC            | -   |               |
| 2 PLC ± -                              |  | 108-1050                    | SIZE  | CAGE CODE     |
| 3 PLC ± .015                           |  | 114-1019                    | A2  | 00779         |
| 4 PLC ± -                              |  | WEIGHT                      | DRAWING NO  |               |
| ANGLES ± 1°                            |  | 1744163                     |   | RESTRICTED TO |
| FINISH                                 |  | CUSTOMER DRAWING            |   | -             |
| MATERIAL                               |  | SCALE                       | SHEET   | REV           |
|  |  | 3:1                         | 4 of 5  | B5            |

THIS DRAWING IS UNPUBLISHED. RELEASED FOR PUBLICATION  
 © COPYRIGHT - By ALL RIGHTS RESERVED.

| REVISIONS |     |             |      |      |
|-----------|-----|-------------|------|------|
| P         | LTR | DESCRIPTION | DATE | APVD |
| -         | -   | SEE SHEET 1 | -    | -    |



|   |   |                                 |
|---|---|---------------------------------|
| 6 | 7 | 0.64±0.02 SQUARE<br>[.025±.001] |
|   |   | ┌ 0.25 [.010] M A               |
|   |   | ├ 0.2 [.008] M A                |
|   |   | └ 0.05 [.002] M                 |



RECOMMENDED P.C. BOARD LAYOUT  
 FOR USE WITH 0.25 [.010] THICK STENCIL  
 SCALE 5:1

HEADER ASSEMBLY

|              |                |             |
|--------------|----------------|-------------|
| 5.08 [.200]  | 2              | 3-1744163-2 |
| 17.78 [.700] | 7              | 3-1744163-7 |
| 10.16 [.400] | 4              | 3-1744163-4 |
| 7.62 [.300]  | 3              | 3-1744163-3 |
| DIM "L"      | NO OF POSITION | PART NO     |

|   |  |                              |   |                               |
|---|--|------------------------------|---|-------------------------------|
| THIS DRAWING IS A CONTROLLED DOCUMENT.  |  | DWN<br>jr ruth<br>30MAR11    | TE Connectivity   |                               |
| DIMENSIONS:<br>mm [INCHES]  |  | CHK<br>SAM MACE<br>30MAR11   | NAME<br>MTA-100 HEADER ASSY, SURFACE MOUNT,<br>FRICTION LOCK, TAPE LOADED W/CAP |                               |
| TOLERANCES UNLESS OTHERWISE SPECIFIED:<br>0 PLC ± -<br>1 PLC ± -<br>2 PLC ± -<br>3 PLC ± .015<br>4 PLC ± -<br>ANGLES ± 1° |  | APVD<br>SAM MACE<br>30MAR11  | PRODUCT SPEC<br>108-1050  |                               |
| MATERIAL  |  | APPLICATION SPEC<br>114-1019 | SIZE<br>A2  | RESTRICTED TO                 |
| FINISH  |  | WEIGHT                       | CAGE CODE<br>00779  | DRAWING NO<br>1744163         |
|   |  | CUSTOMER DRAWING             |   | SCALE 3:1 SHEET 5 of 5 REV B5 |