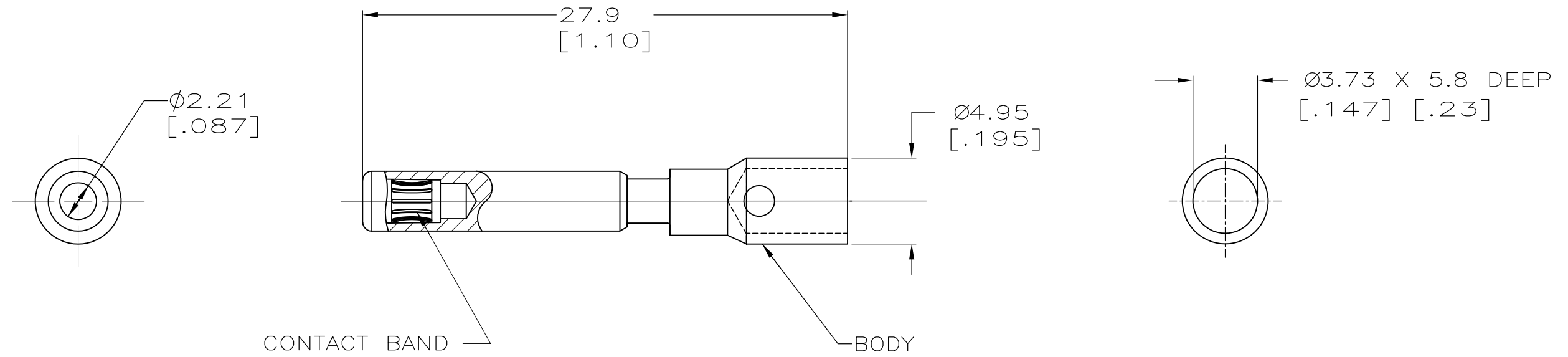


LOC	DIST	REVISIONS			
P	LTR	DESCRIPTION	DATE	DWN	APVD
CH	11	C2	REVISED PER ECO-11-010839	25MAY11	RK HMR

- 1 MATERIAL- BODY: COPPER ALLOY  
BAND: BeCu
- 2 FINISH- BODY AND BAND: 5.08μM[.000200] SILVER  
OVER 1.02μM[.000040] NICKEL.
- 3. WIRE BARREL WILL ACCEPT #10 AWG WIRE.
- 4. MATES WITH AMP PART NUMBER 193796-1.



193797-1  
PART NO

THIS DRAWING IS A CONTROLLED DOCUMENT.		DWN J.TURNER 06-03-93	TE Connectivity	
DIMENSIONS: mm[INCHES]		CHK ALG 11-17-93		
TOLERANCES UNLESS OTHERWISE SPECIFIED:		APVD SRS 11-17-93	NAME SOCKET ASSY, LOUVERTAC, NO 10 AWG, UNIVERSAL MATE-N-LOK* II	
0 PLC ± - 1 PLC ± 0.5[.02] 2 PLC ± 0.25[.010] 3 PLC ± - 4 PLC ± - ANGLES ± -		PRODUCT SPEC -	RESTRICTED TO -	
MATERIAL 1	FINISH 2	APPLICATION SPEC -	SIZE A3	CAGE CODE 00779
		WEIGHT -	DRAWING NO C-193797	
CUSTOMER DRAWING			SCALE NONE	SHEET 1 of 1
			REV C2	

\*MATE-N-LOK IS A TRADEMARK