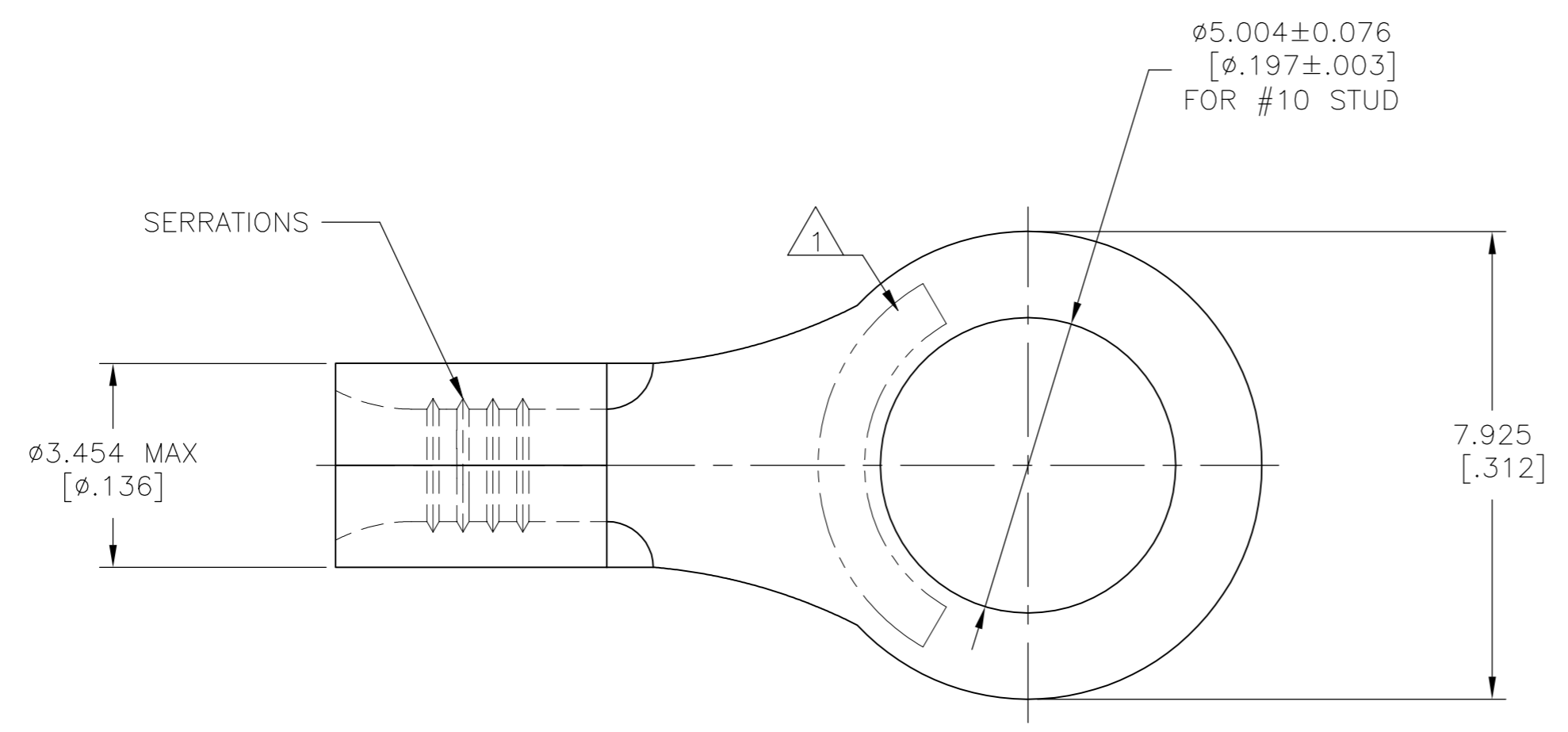


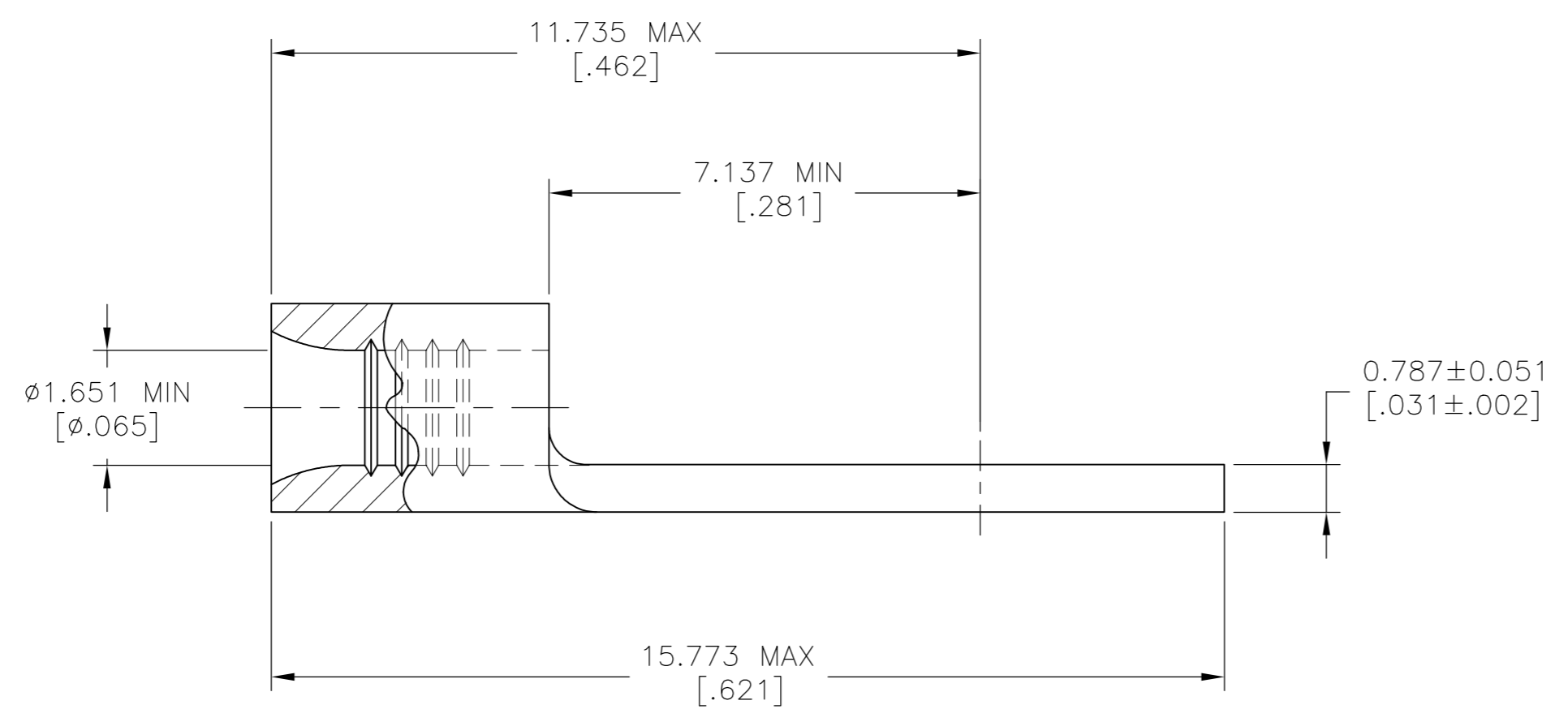
THIS DRAWING IS UNPUBLISHED. RELEASED FOR PUBLICATION  
 © COPYRIGHT - TE Connectivity Ltd. ALL RIGHTS RESERVED.

REVISIONS					
P	LTR	DESCRIPTION	DATE	DWN	APVD
	H	REV PER 0G3A-0600-03	30SEPT03	JR	MS
	H1	REVISED PER ECO-17-008806	16FEB2018	RS	DR



<b>AMP</b> WIRE RANGE	Listed FILE E13288
22-16 AWG STRANDED	22-16 AWG STRANDED

- 1 STAMP AMP 22-18\* APPROX AS SHOWN  
22-16 TERMINALS ARE STAMPED 22-18 IN  
ACCORDANCE WITH MILITARY SPECIFICATION  
SAE AS7928, COMMERCIAL WIRE RANGE IS  
22-16
- 2 TIN PLATE 0.00254[.000100] MIN THK
- 3 NOTE DELETED



1000	LOOSE PIECE	30693
QTY	PACKAGE TYPE	PART NO.

<b>AMP INCORPORATED CUSTOMER SERVICE SYSTEMS</b>		MAX RECOMMENDED OPERATING TEMPERATURE: 170°C[338°F]
FOR ADDITIONAL PRODUCT INFORMATION OR COPIES OF DRAWINGS AND TECHNICAL DOCUMENTS	PRODUCT INFORMATION CENTER 1-800-522-6752	VOLTAGE RATING: N/A
FOR APPLICATION TOOLING INFORMATION	TOOLING ASSISTANCE CENTER 1-800-722-1111	CIRCULAR MIL AREA: 0.26-1.65mm <sup>2</sup> [509-3,260] STRANDED
FOR ORDER ENTRY	1-800-526-5142	THIS DRAWING IS A CONTROLLED DOCUMENT FOR AMP INCORPORATED. IT IS SUBJECT TO CHANGE AND THE CONTROLLING ENGINEERING ORGANIZATION SHOULD BE CONTACTED FOR THE LATEST REVISION.

THIS DRAWING IS A CONTROLLED DOCUMENT.		DWN TA BRINKMAN 2-3-93
DIMENSIONS: mm [INCHES]		CHK DA PATTERSON 2-3-93
TOLERANCES UNLESS OTHERWISE SPECIFIED:		APVD DA PATTERSON 2-3-93
0 PLC ± -	1 PLC ± -	PRODUCT SPEC
2 PLC ± -	3 PLC ± 0.127[.005]	APPLICATION SPEC
4 PLC ± -	ANGLES ± -	
MATERIAL COPPER ASTM B152	FINISH TIN PLATE 2	NAME UL 486 A-B
WEIGHT		SIZE A2
CUSTOMER DRAWING		CAGE CODE 00779
SCALE 10:1		DRAWING NO. 30693
SHEET 1 of 1		RESTRICTED TO -
REV H1		

<b>TE</b> TE Connectivity Ltd.		
TERMINAL, RING TONGUE, BUDGET 22-16 AWG		
SIZE A2	CAGE CODE 00779	DRAWING NO. 30693
SCALE 10:1		SHEET 1 of 1
REV H1		