

## Single PCB terminal block - PTSPL-6/1-2X2 2,9 R32 - 1704837

Please be informed that the data shown in this PDF Document is generated from our Online Catalog. Please find the complete data in the user's documentation. Our General Terms of Use for Downloads are valid (<http://phoenixcontact.com/download>)



PCB terminal block for tin-plated stranded cables, e.g., type PV 1-F, nominal current: 41 A, 1-pos., connection method: spring-cage connection, mounting: THT/THR, user information on through hole reflow technology can be found at: [combicon.com](http://combicon.com)



### Key commercial data

|                                      |          |
|--------------------------------------|----------|
| Packing unit                         | 1 pc     |
| Minimum order quantity               | 250 pc   |
| Weight per Piece (excluding packing) | 3.2 GRM  |
| Custom tariff number                 | 85369010 |
| Country of origin                    | Germany  |

### Technical data

#### Dimensions

|                |         |
|----------------|---------|
| Pin dimensions | 0,6 x 1 |
| Hole diameter  | 1.3 mm  |

#### General

|                       |                   |
|-----------------------|-------------------|
| Nominal current $I_N$ | 41 A              |
| Nominal cross section | 6 mm <sup>2</sup> |
| Solder pin surface    | Sn                |
| Stripping length      | 15 mm             |

#### Connection data

|  |                          |
|--|--------------------------|
| Conductor cross section stranded min.                                      | 2.5 mm <sup>2</sup>      |
| Conductor cross section stranded max.                                      | 6 mm <sup>2</sup>        |
| Conductor cross section stranded, with ferrule without plastic sleeve min. | 2.5 mm <sup>2</sup> Min. |
| Conductor cross section stranded, with ferrule without plastic sleeve max. | 6 mm <sup>2</sup> max.   |

# Single PCB terminal block - PTSPL-6/1-2X2 2,9 R32 - 1704837

## Classifications

eCl@ss

|            |          |
|------------|----------|
| eCl@ss 4.0 | 272607xx |
| eCl@ss 4.1 | 27260701 |
| eCl@ss 5.0 | 27260701 |
| eCl@ss 5.1 | 27141190 |
| eCl@ss 6.0 | 27260704 |
| eCl@ss 7.0 | 27440402 |
| eCl@ss 8.0 | 27440401 |

## ETIM

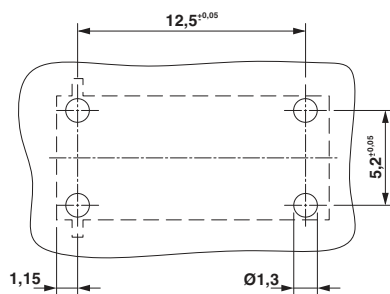
|          |          |
|----------|----------|
| ETIM 3.0 | EC001121 |
| ETIM 4.0 | EC002637 |
| ETIM 5.0 | EC002848 |

## UNSPSC

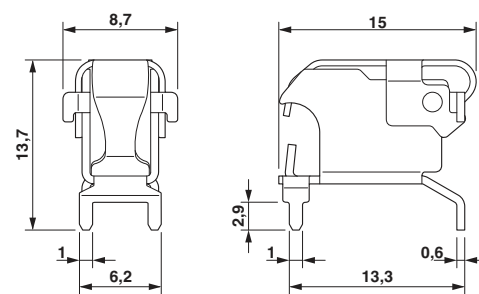
|               |          |
|---------------|----------|
| UNSPSC 6.01   | 30211810 |
| UNSPSC 7.0901 | 39121409 |
| UNSPSC 11     | 39121409 |
| UNSPSC 12.01  | 39121409 |
| UNSPSC 13.2   | 39121409 |

## Drawings

Drilling diagram



Dimensioned drawing



## Single PCB terminal block - PTSPL-6/1-2X2 2,9 R32 - 1704837

Diagram

