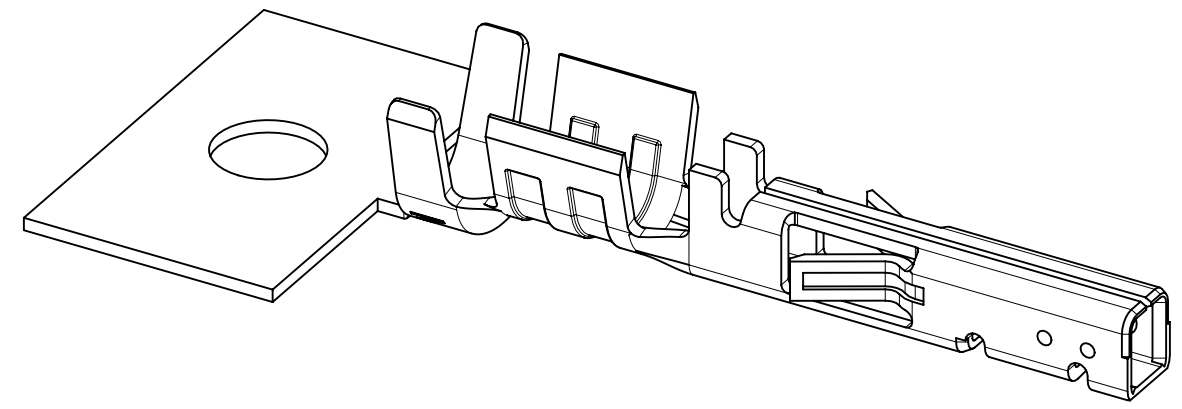
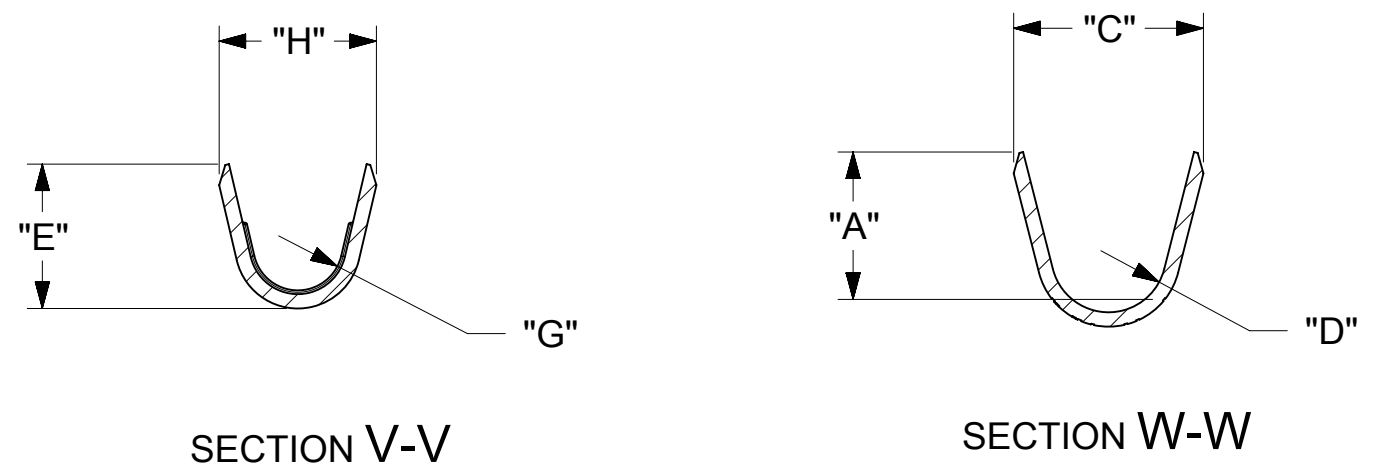
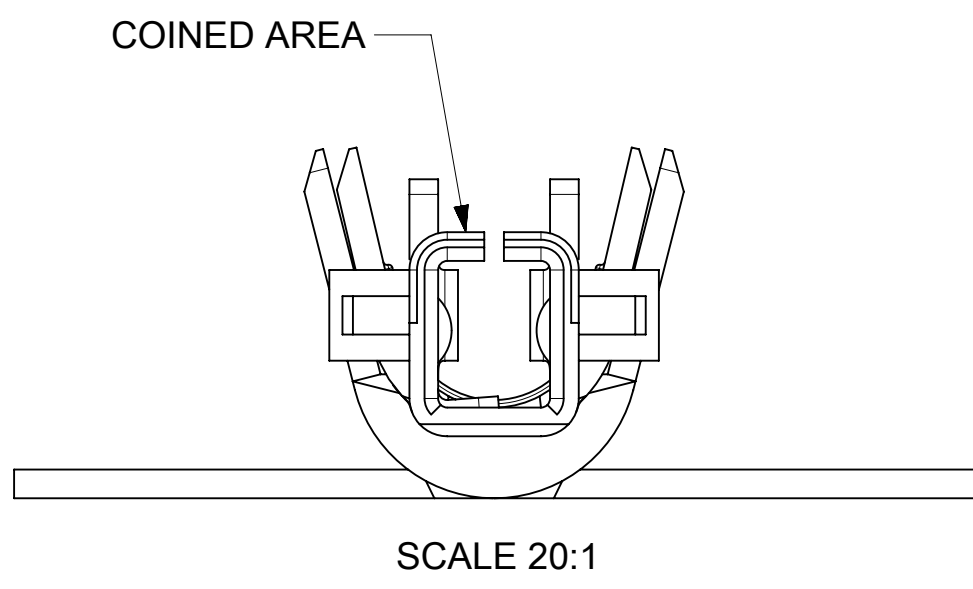
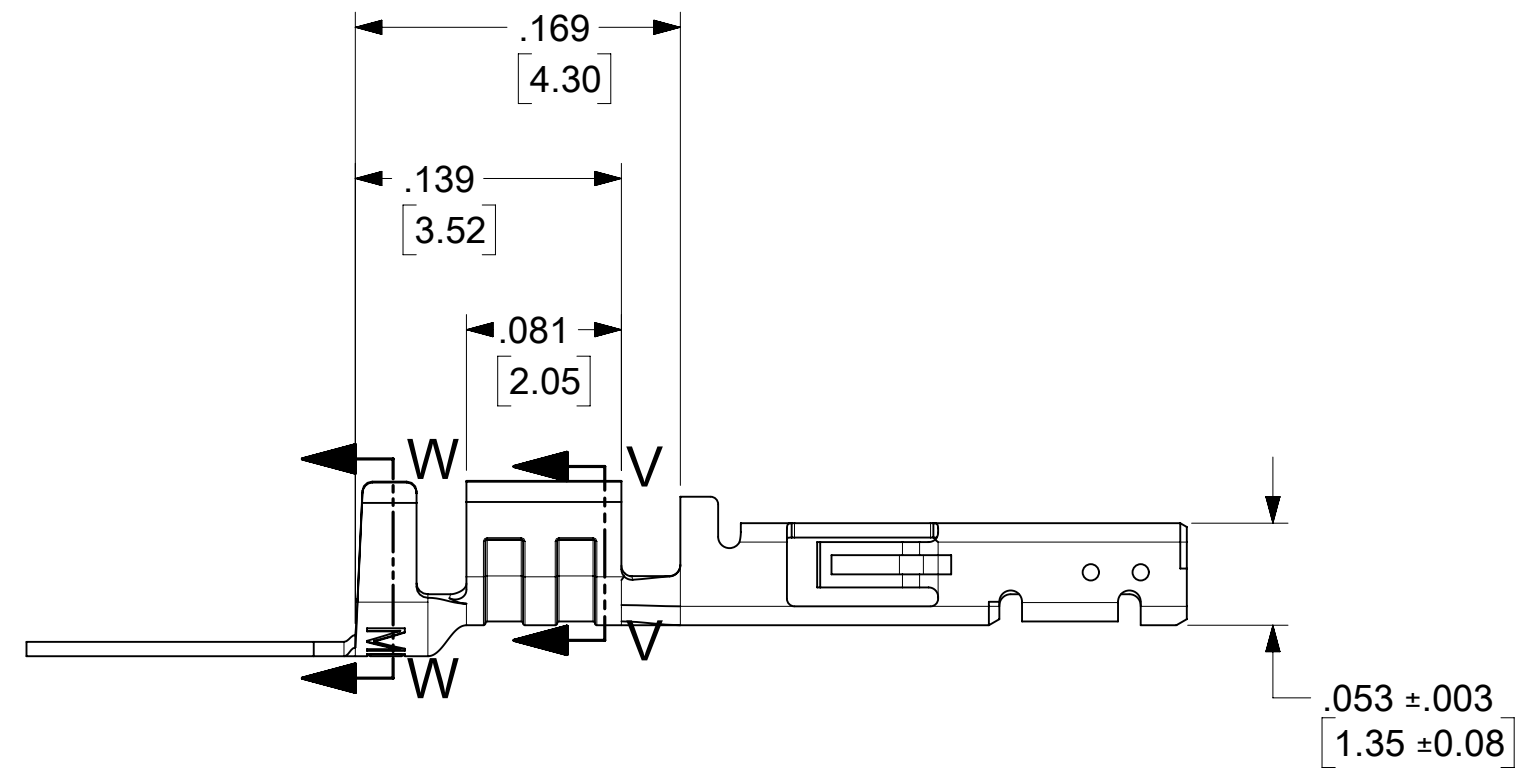
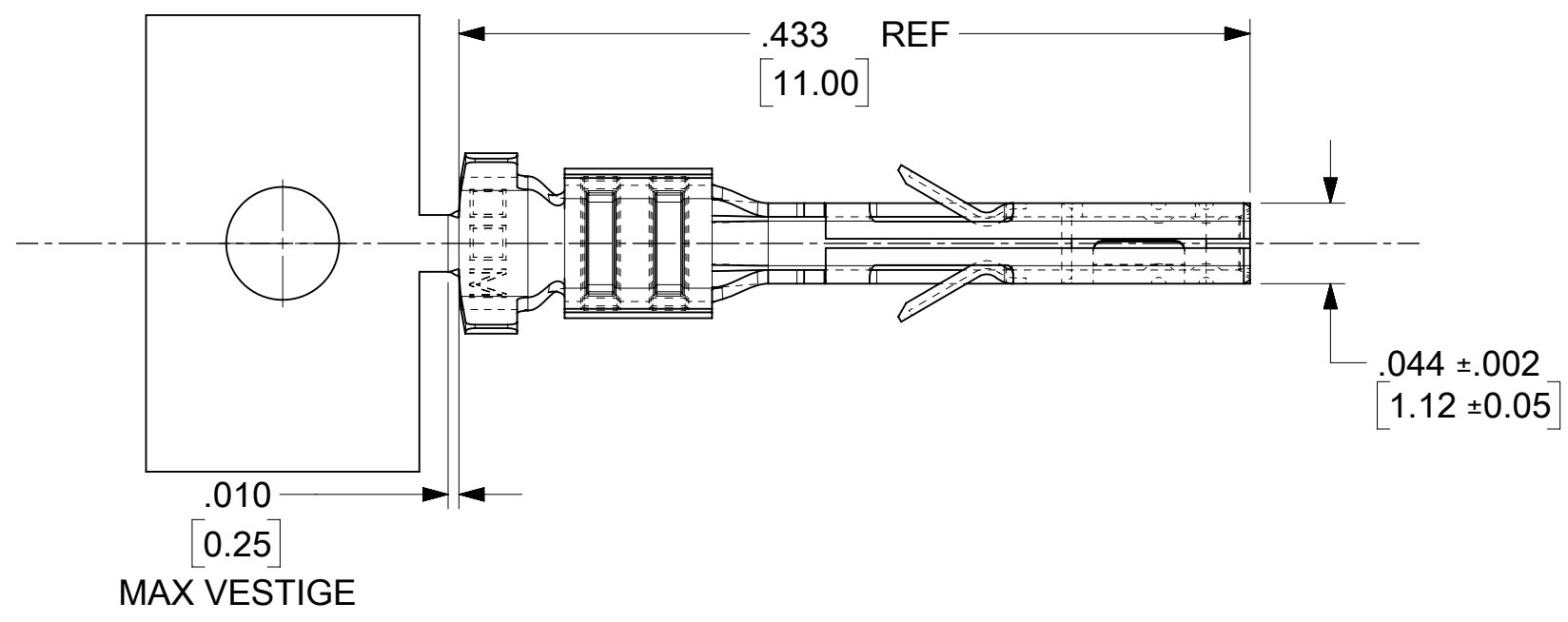


12	11	10	9	8	7	6	5	4	3	2	1
WIRE SIZE	MAX INSULATION	"A" ± .012 ± 0.30	"C" ± .012 ± 0.30	"D" ± .005 ± 0.13	"E" ± .012 ± 0.30	"G" ± .005 ± 0.13	"H" ± .012 ± 0.30				
26-30	.050/1.27	.075/1.91	.083/2.10	.025/0.64 R.	.058/1.47	0.20/0.51 R.	.065/1.65				

MATERIAL NUMBER	PLATING	WIRE SIZE	FORM
43030-0024	A	26-30	CHAIN



- NOTES**
- 1) MATERIAL: PHOSPHOR BRONZE ALLOY
 - 2) TERMINAL PLATING (POST PLATED):
"A" - .000100/(0.00254) MIN. TIN OVERALL
OVER .000050/(0.00127) MIN. NICKEL PLATE OVERALL.
 - 3) PRODUCT SPECIFICATION: PS-43045, PS-43650, PS-44300-001.
 - 4) PACKAGING SPECIFICATION: PK-43030-001 (REEL), PK-43030-003 (LOOSE).
 - 5) TERMINAL FOR USE IN A MICRO FIT RECEPTACLE #43025-****, 43645-****, 44133-****, 171850-****, AND 172952-****.
 - 6) FOR TERMINAL ORIENTATION IN RECEPTACLE SEE DRAWINGS FOR RECEPTACLES.
 - 7) THIS TERMINAL IS DESIGNED IN METRIC.
 - 8) MOLEX RECOMMENDS THE USE OF MICRO-FIT TEST PLUG (SERIES 44242) WHENEVER CONTINUITY TESTING IS PERFORMED. TEST PLUGS MUST NOT BE USED TO MAKE OR BREAK UNDER LOAD. MOLEX DOES NOT RECOMMEND USING STANDARD MATING COMPONENTS (SERIES 43020, 43045, 43640, 43650, OR 43031) FOR HARNESS TESTING PURPOSES.
 - 9) TEXT ON PART IS FOR REFERENCE ONLY. TEXT AND TEXT LOCATION MAY VARY DEPENDING ON PART NUMBER AND/OR TOOL.



FUNCTIONAL SYMBOLS $\frac{F}{A} = 0$ $\frac{F}{C} = 0$ $\frac{F}{P} = 0$ DIVISIONAL SYMBOLS	THIS DRAWING CONTAINS INFORMATION THAT IS PROPRIETARY TO MOLEX ELECTRONIC TECHNOLOGIES, LLC AND SHOULD NOT BE USED WITHOUT WRITTEN PERMISSION											
	DIMENSION UNITS		SCALE		CURRENT REV DESC: CORRECT 3.52 DIMENSION							
	INCH/MM		10:1									
	GENERAL TOLERANCES (UNLESS SPECIFIED)										PRODUCT CUSTOMER DRAWING MICRO-FIT (3.0) POST PLATE TIN FEMALE CRIMP TERMINAL DOCUMENT NUMBER: 430300000-SD DOC TYPE: PSD DOC PART: 000 REVISION: A2	
4 PLACES		±	MM	±	INCH		EC NO: 730513		2022/11/05			
3 PLACES		±			± 0.01		DRWN: SETHH6		2022/12/01			
2 PLACES		±	0.25		± 0.014		CHK'D: MKIPPER		2023/05/04			
1 PLACE		±	0.35		±		APPR: XQZHANG					
0 PLACES		±			±		INITIAL REVISION:					
ANGULAR TOL		±	0.5 °				DRWN: CSLAFTER		2016/12/2			
DRAFT WHERE APPLICABLE MUST REMAIN WITHIN DIMENSIONS		THIRD ANGLE PROJECTION		DRAWING		SERIES		MATERIAL NUMBER		CUSTOMER		
				C-SIZE		43030		SEE CHART		GENERAL MARKET		
										SHEET NUMBER		
										1 OF 1		