



Part Number: DMI5011

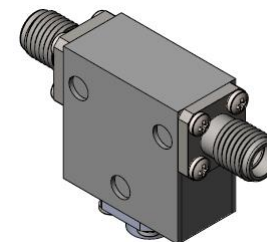
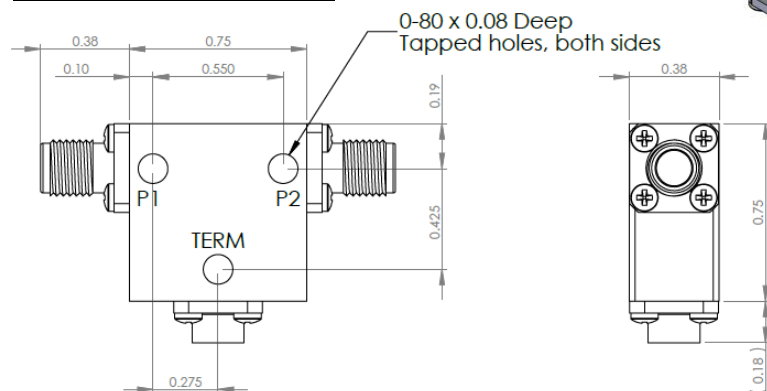
Electrical Specifications

Frequency Range (GHz):	5.0 – 10.7
Isolation (dB):	15 MIN
Insertion Loss (dB):	1.0 MAX
VSWR:	1.45:1 MIN
Forward Power (W):	20 AVG 20 PK
Reflective Power (W):	2 AVG

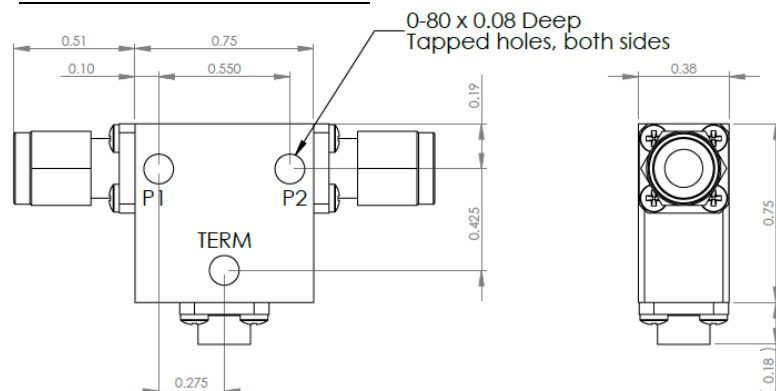
Mechanical/Environmental Specifications

Connector Type:	SMA
Connector Body:	Passivated stainless steel
Connector Pin:	Gold plated copper
Load Body:	Brass
Magnetic Shunt:	Nickel plated CRS
Operational Temp:	-30°C to +75°C
Weight (oz)	0.6 MAX

DMI5011 Dimensions



DMI5011-3 Dimensions



Dimensions are in inches
Tolerance

XX	±0.03
XXX	±0.010

Type of Device	PN Suffix	Connector Configuration Input / Output	PN Example
Single and Dual Junction Isolator, 2-Port Device	N/A	Female / Female	DMI5011
	-1	Male / Female	DMI5011-1
	-2	Female / Male	DMI5011-2
	-3	Male / Male	DMI5011-3



MEASURED DATA

Part Number: DMI5011, +25°C

