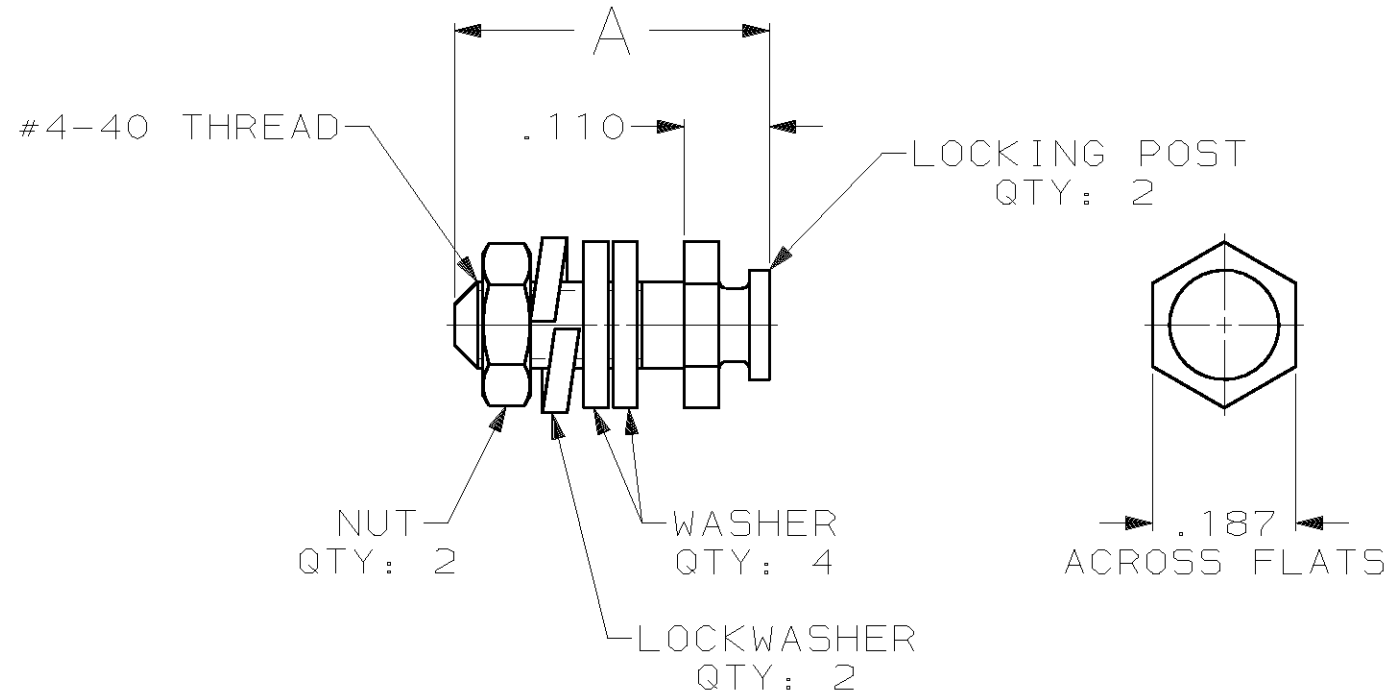


THIS DRAWING IS UNPUBLISHED. RELEASED FOR PUBLICATION, 19 .  
 © COPYRIGHT 19 BY AMP INCORPORATED. ALL INTERNATIONAL RIGHTS RESERVED.

LOC GP	DIST 00	P	F	REVISIONS				
				ZONE	LTR	DESCRIPTION	DATE	APPD
					C	REV PER OUID-0274-00	22 OCT 01	JR



- 1 ZINC PLATED PER ASTM B633, TYPE II, CLASS SC1, YELLOW CHROMATE.
- 2 ZINC PLATED PER ASTM B633, TYPE III, CLASS SC1, CLEAR CHROMATE.
- 3. PARTS PACKAGED UNASSEMBLED.
- 4 PARTS PACKAGED AS A UNIT KIT.
- 5 PARTS INDIVIDUALLY BULK PACKAGED & SHIPPED AS A UNIT PACKAGE.

SUPERSEDED BY 206514-4

5	1	.560	206514-7
4	1	.560	206514-6
5	2	.410	206514-5
4	2	.410	206514-4
5	1	.410	206514-3
4	1	.410	206514-1

		PACKAGING	FINISH	A	PART NO
DO NOT SCALE PRINT. UNLESS SPECIFIED DIMENSIONS IN INCHES TOLERANCES ON: 2 PLC DEC ± - 3 PLC DEC ± .015 ANGLES ± -		DR -	AMP INCORPORATED Harrisburg, Pa. 17105		
MATERIAL		CHK -			
COLD ROLLED STEEL PER ASTM A108		APPD -	NAME		
FINISH		APPD -	LOCKING POST KIT, AMPLIMITE ®		
SEE TABLE		PRODUCT SPEC	SIZE	FSCM NO	DRAWING NO
		APPLICATION SPEC	<b>B</b>	00779	206514
		WEIGHT -	SCALE	4:1	SHEET
					1 OF 1