



### Electrical specifications

**Center Frequency:** 2600 MHz  
**Bandwidth:** 200 MHz min  
**VSWR:** 15 dB min  
**Input / Output Impedance:** 50 Ohms  
**Passband:** 2500-2700 MHz  
**Passband Insertion Loss:** 1.5 dB max  
**Passband Ripple:** 0.1 dB max  
**Rejection:** 40 dB min at 2150 MHz  
**Rejection 2:** 40 dB min at 3050 MHz  
**Power Handling:** 1 W

### Mechanical

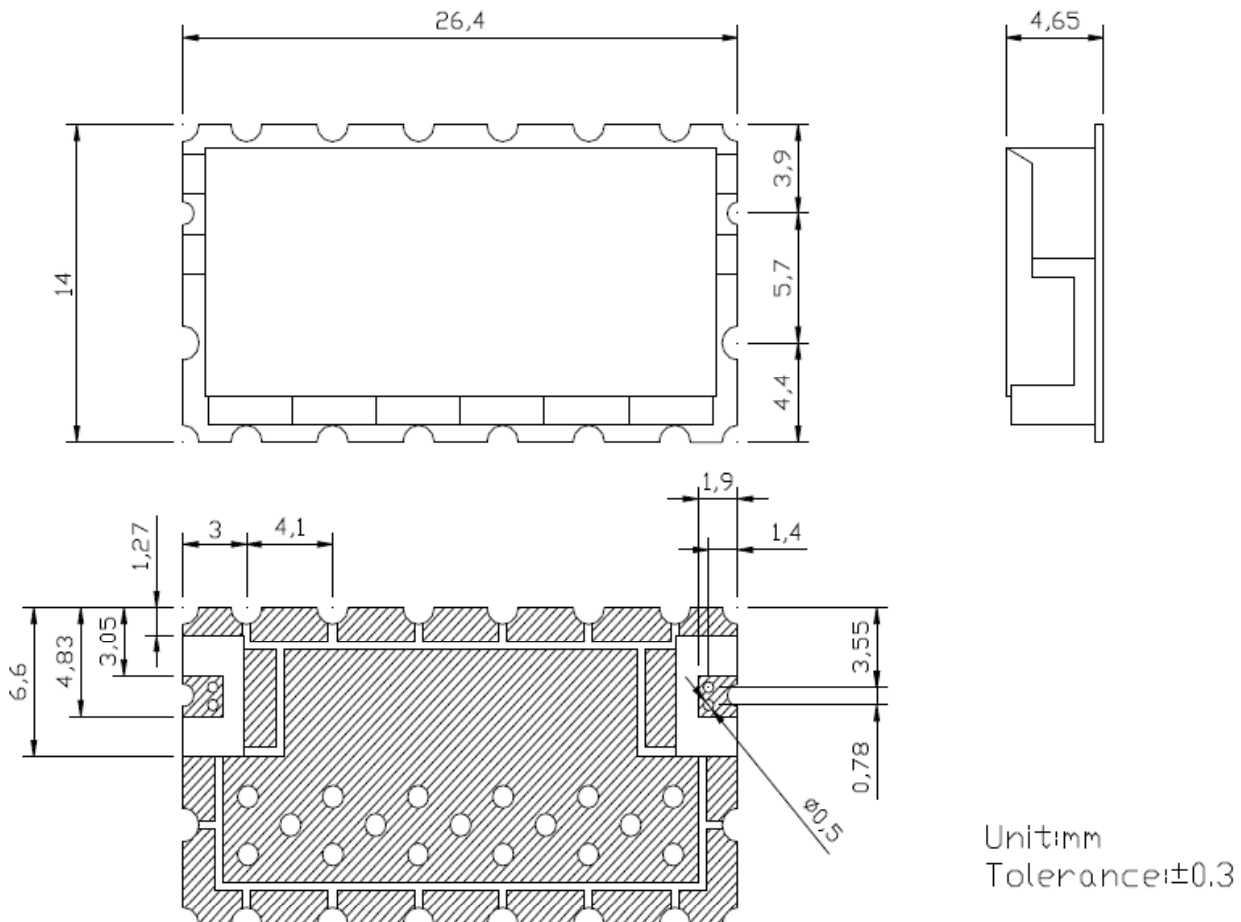
**Mounting Method:** SMT  
**Dimensions:** 26.4 x 14 x 4.65 mm

### Environmental

**Operating Temperature:** -35°C to 85°C  
**Storage Temperature:** -50°C to +90°C

This product is RoHS compliant.

### Outline Drawing:





**ANATECH ELECTRONICS INC**  
RF & Microwave Filters & Products

# 2600 MHz Ceramic Bandpass Filter

Part Number: AM2600B543



## Response Plot:

