

4

3

2

1

THIS DRAWING IS UNPUBLISHED.

RELEASED FOR PUBLICATION

© COPYRIGHT

ALL RIGHTS RESERVED.

LOC DIST

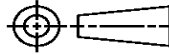
REVISIONS

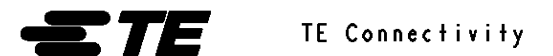
P	LTR	DESCRIPTION	DATE	DWN	APVD
	D1	ECR-16-009824	28JUL2016	GK	SD

# REPLACED BY OCEAN STYLE APPLICATOR PART NUMBER 2836316-1

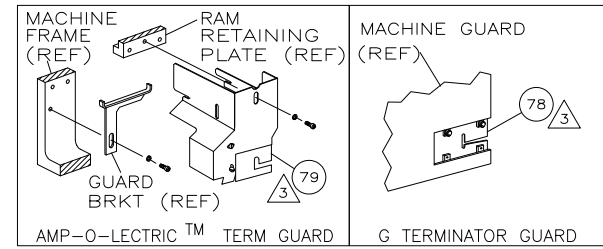
FOR REPLACEMENT PARTS FOR APPLICATOR 1385295  
REFER TO ADDITIONAL PAGE(S). SPARE PARTS KIT (IF LISTED)  
WILL REMAIN AVAILABLE.

THE REPLACEMENT OCEAN STYLE APPLICATOR HAS THE  
SAME TERMINATOR/PRESS INTERFACE AS APPLICATOR  
1385295

THIS DRAWING IS A CONTROLLED DOCUMENT.		DWN	GOPALAKRISHNA HV		
DIMENSIONS:		CHK	GOPALAKRISHNA HV		
		TOLERANCES UNLESS OTHERWISE SPECIFIED:		APVD	
		0 PLC ± 1 PLC ± 2 PLC ± 3 PLC ± 4 PLC ± ANGLES ±		STOUGH DALE	
MATERIAL		PRODUCT SPEC		NAME	
FINISH		APPLICATION SPEC		SIDE FEED HDM APPLICATOR	
		WEIGHT	SIZE	CAGE CODE	DRAWING NO
			A3		©- 1385295
		CUSTOMER DRAWING		SCALE	SHEET 1 OF 2 REV D1



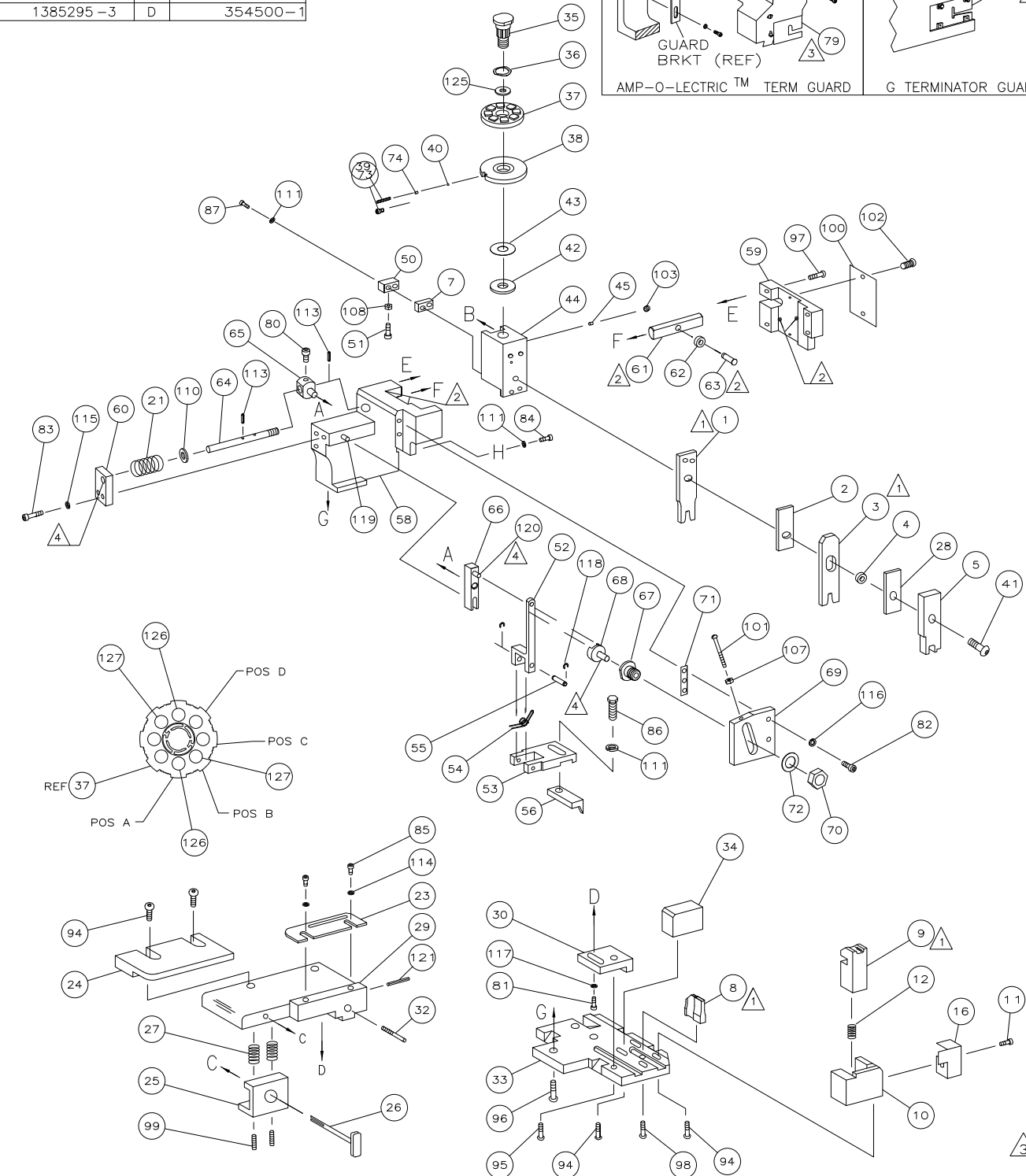
PART NUMBER	REV	FIRST USED
1385295-1	D	122500-1
1385295-2	D	565435-5
1385295-3	D	354500-1



AMP TERMINAL	AMP CRIMP SPECS
1437284-9	AMP TERMINAL AMP CRIMP SPECS
1456216-1	CRIMP HEIGHT WIRE SIZE
A	.043 ±.002 [1.09 ±0.05mm] 18
B	.039 ±.002 [0.99 ±0.05mm] 20
C	NOT USED
D	NOT USED
CRIMP	SIZE TYPE RANGE
WIRE	.070 [1.78mm] F 20-18
INSUL	.090 [2.29mm] 0 .071 MAX
WIRE STRIP LENGTH	TERM APPL SPEC FEED APPL INSTRUCTION SET UP GAGE LAYOUT
.165	NONE .315 408-8040 458637-1 L2556

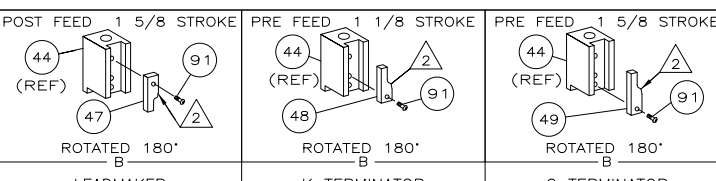
LUC	DIST	REVISONS
A	66	DESCRIPTION DATE DWN APD
		ECR-09-006210 3-2009 MY TE

-1	LEADMAKER	MECH POST FEED
-2	BENCH MODEL K	MECH PRE FEED
-3	BENCH MODEL G	MECH PRE FEED

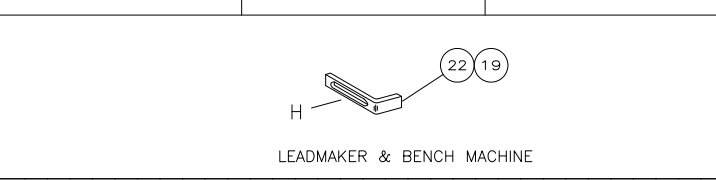


QTY	REF	PART NO	DESCRIPTION	ITEM NO
2	2	5-354779-1	PIN, WIRE DISC (.3245)B	129
2	2	4-354779-3	PIN, WIRE DISC (.3205)A	128
1	1	986950-1	WASHER, FLAT PRECISION	127
1	1	217238-1	GENERAL INSTRUCTION PACKAGE	126
1	1	4088040	SF APPL INST 408-8040	125
1	1	4-21028-0	PIN,SLT SPR(φ.093x.75)ST GDE PL	124
REF	REF	1-21030-1	PIN,DOWEL(φ.187x.50)LEVER	123
REF	REF	1-21030-6	PIN,DOWEL(φ.187x1.25)HOUSING	122
REF	REF	21045-3	RING,RET "C"(φ.187)FD FING PIN	121
1	1	21024-5	WASHER, LOCK(#10)ADJ BLOCK	120
REF	REF	21024-5	WASHER,LOCK(#10)ADJ PLATE	119
REF	REF	21024-5	WASHER,LOCK(#10)FEED GDE ROD	118
2	2	21024-2	WASHER,LOCK(#4)FRONT STP GUIDE	117
REF	REF	5-21028-1	PIN,SLT SPR(φ.125x.50)ADJ ROD	116
4	4	21024-4	WASHER,LOCK(#8)STRIPPER	115
REF	REF	21899-4	WASHER,FLAT(φ5/16)SCREW ADJ	114
1	1	21018-5	NUT,HEX(NO.6)HOLDDOWN	113
REF	REF	21068-5	NUT,HEX(6-32)FEED ADJ	112
1	1	21009-2	SCR,SKT SET(1/4-20x.25 LW)RAM	111
2	2	21017-2	SCR,DRIVE(#2x.19)ID PLATE	110
REF	REF	6-23715-5	SCR,PAN HD(6-32x1.50)FEED ADJ	109
1	1	461264-1	PLATE, IDENTIFICATION	108
2	2	5-21006-6	SCR,SET(10-32x.75)DRAG	107
1	1	22733-8	SCR,BHC(8-32x.38 LW)ANVIL	106
REF	REF	2-21002-9	SCR,BHC(10-32x.75)CAP	105
REF	REF	2-22733-8	SCR,BHC(1/4-20x.62)HOUSING	104
REF	REF	2-21002-7	SCR,BHC(10-32x.50)SG ADJ BLOCK	103
6	6	2-21002-2	SCR,BHC(8-32x.50)TERM H DWN	102
1	1	1-21002-7	SCR,BHC(6-32x.38)CAM	101
2	2	2-21000-9	SCR,SHC(8-32x.75)DEP-HOLD	100
1	1	2-22603-0	SCR,HEX HD(8-32x.31)FEED FINGER	99
2	2	1-21000-3	SCR,SHC(4-40x.25)F ST GUIDE	98
1	1	2-21000-7	SCR,SHC(8-32x.50)STRIPPER	97
REF	REF	3-21000-7	SCR,SHC(10-32x.75)FEED ROD GD	96
REF	REF	3-21000-6	SCR,SHC(10-32x.62)FD ADJ BLK	95
1	1	3-21000-4	SCR,SHC(10-32x.38)SG ADJ BL	94
REF	REF	3-21000-4	SCR,SHC(10-32x.38)PIVOT BLK	93
-	REF	455749-1	GUARD, WINDOW	92
REF	-	679532-1	INSERT, GUARD	91
1	1	690603-1	SPRING, ASSIST	90
1	1	23030-1	SCR,SHC(6-32x.25 SL)INS DISC	89
REF	REF	458109-1	WASHER, SPECIAL	88
REF	REF	690517-1	SPACER	87
-3	-2	U/M	DESCRIPTION	86
			PARTS LIST	85
				84
				83
				82
				81
				80
				79
				78
				77
				76
				75
				74
				73
				72
				71
				70
				69
				68
				67
				66
				65
				64
				63
				62
				61
				60
				59
				58
				57
				56
				55
				54
				53
				52
				51
				50
				49
				48
				47
				46
				45
				44
				43
				42
				41
				40
				39
				38
				37
				36
				35
				34
				33
				32
				31
				30
				29
				28
				27
				26
				25
				24
				23
				22
				21
				20
				19
				18
				17
				16
				15
				14
				13
				12
				11
				10
				9
				8
				7
				6
				5
				4
				3
				2
				1

REF	REF	REF	REF	QTY	DESCRIPTION	ITEM NO
REF	REF	REF	-	22594-8	NUT,HEX(1/2-20)	70
REF	REF	REF	-	240628-1	PLATE, ADJUSTMENT	69
REF	REF	REF	-	240626-1	SHAFT, PIVOT	68
REF	REF	REF	-	240633-1	BUSHING	67
REF	REF	REF	-	455680-1	LEVER, INTERMEDIATE	66
REF	REF	REF	-	240629-1	BLOCK, PIVOT	65
REF	REF	REF	-	240632-2	SCREW, ADJ FEED ROD	64
REF	REF	REF	-	240659-3	PIN, CAM ROLLER	63
REF	REF	REF	-	240658-1	ROLLER, CAM	62
REF	REF	REF	-	454398-2	ROD, FEED	61
REF	REF	REF	-	454178-1	GUIDE, FEED ROD	60
REF	REF	REF	-	454220-1	CAP, RAM	59
REF	REF	REF	-	454485-1	HOUSING	58
1	1	1	-	458537-2	PAWL, FEED	57
REF	REF	REF	-	240624-1	PIN, FEED FINGER	56
REF	REF	REF	-	691499-1	SPRING, FEED FINGER	55
REF	REF	REF	-	690541-1	HOLDER, FEED FINGER	54
REF	REF	REF	-	455679-1	LEVER, TERMINAL FEED ARM	53
1	1	1	-	811242-2	BUMPER, HOLDDOWN	52
1	1	1	-	690753-1	SPACER, TONKER	51
1	-	-	-	690602-6	CAM, PRE-FEED 1 5/8 ST	50
-	-	-	-	690602-5	CAM, PRE-FEED 1 1/8 ST	49
-	-	-	-	690501-4	CAM, POST-FEED 1 5/8 ST	48
1	1	1	-	459456-1	APPLICATOR, BASIC (SUBASSY)	47
1	1	1	-	690191-1	PLUG, NYLON	46
1	1	1	-	455673-1	RAM	45
1	1	1	-	690125-1	WASHER, LAMINATED	44
1	1	1	-	690124-1	WASHER, RAM	43
1	1	1	-	7-21002-9	BOLT, CRIMPER(5/16x1.00)	42
1	1	1	-	23241-6	BALL, STEEL	41
1	1	1	-	690170-1	SPRING, COMPRESSION	40
1	1	1	-	690142-1	DISC, INSULATION	39
1	1	1	-	354777-1	WIRE DISC, PLASTIC	38
1	1	1	-	22480-5	WASHER, SPRING	37
1	1	1	-	690212-1	POST, RAM	36
1	1	1	-	690786-1	SUPPORT, TERMINAL	35
REF	REF	REF	-	455675-1	PLATE, BASE	34
1	1	1	-	690432-3	SCREW, ADJUSTMENT	33
REF	REF	REF	-	455689-1	BLOCK, STRIP GUIDE ADJ	32
1	1	1	-	455671-1	PLATE, STRIP GUIDE	31
1	1	1	-	3-455888-7	SPACER, FRONT SHEAR DEP	30
2	2	2	-	1-22284-0	SPRING, DRAG	29
1	1	1	-	690546-1	LEVER, DRAG RELEASE	28
1	1	1	-	240792-1	DRAG, TERMINAL	27
1	1	1	-	6-690504-8	GUIDE, STRIP (REAR)	26
1	1	1	-	690438-1	GUIDE, STRIP (FRONT)	25
-	-	-	-	690472-2	STRIPPER	24
REF	REF	REF	-	4-22284-9	SPRING, FEED RETURN	23
1	1	1	-	691353-1	STRIPPER	22
1	1	1	-	318563-1	GUARD, CHIP, FRONT	21
1	1	1	-	3-22280-3	SPRING, SHEAR	20
1	1	1	-	690461-1	STOP, SHEAR	19
1	1	1	-	690459-1	HOLDER, SHEAR (FRONT)	18
1	1	1	-	1-454276-9	SHEAR, FLOAT (FRONT)	17
1	1	1	-	4-662185-7	ANVIL	16
1	1	1	-	2-240641-5	SPACER, DEPRESSOR (REAR)	15
1	1	1	-	1-455889-4	DEPRESSOR, SHEAR (FRONT)	14
1	1	1	-	2-238011-2	SPACER, BLOCK CRIMPER	13
1	1	1	-	1-904741-6	CRIMPER, INSULATION	12
1	1	1	-	455888-2	SPACER, CRIMPER	11
1	1	1	-	3-456404-5	CRIMPER, WIRE	10
-3	-2	-1	U/M	DESCRIPTION	ITEM NO	9
						8
						7
						6
						5
						4
						3
						2
						1



1. RECOMMENDED SPARE PARTS.
2. GREASE LIGHTLY.
3. GUARD MUST BE IN PLACE WHEN OPERATING APPLICATOR IN A BENCH MACHINE.
4. LUBRICATE DAILY USING NO. 20 MACHINE OIL.
5. ITEMS WITH QTY OF REF SPECIFIED (EXCEPT ITEMS 78 AND 79) ARE USED ON ITEM 46.
6. TERMINAL IS LISTED ON PRINT 1456216.



THIS DRAWING IS A CONTROLLED DOCUMENT.

OWNER: R. KNEPPER  
 DATE: 25AUG01  
 CHK: G. BAILEY  
 DATE: 08AUG01  
 APD: T. ELBIN  
 DATE: 25AUG01

TYCO ELECTRONICS CORPORATION  
 HARRISBURG, PA 17105-3608

PRODUCT SPEC: SIDE FEED HDM APPLICATOR

APPLICATION SPEC: -

RESTRICTED TO: -

SCALE: A1  
 SHEET: 1 OF 1

CUSTOMER DRAWING: 1385295