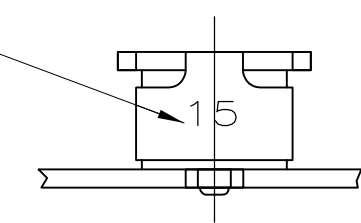


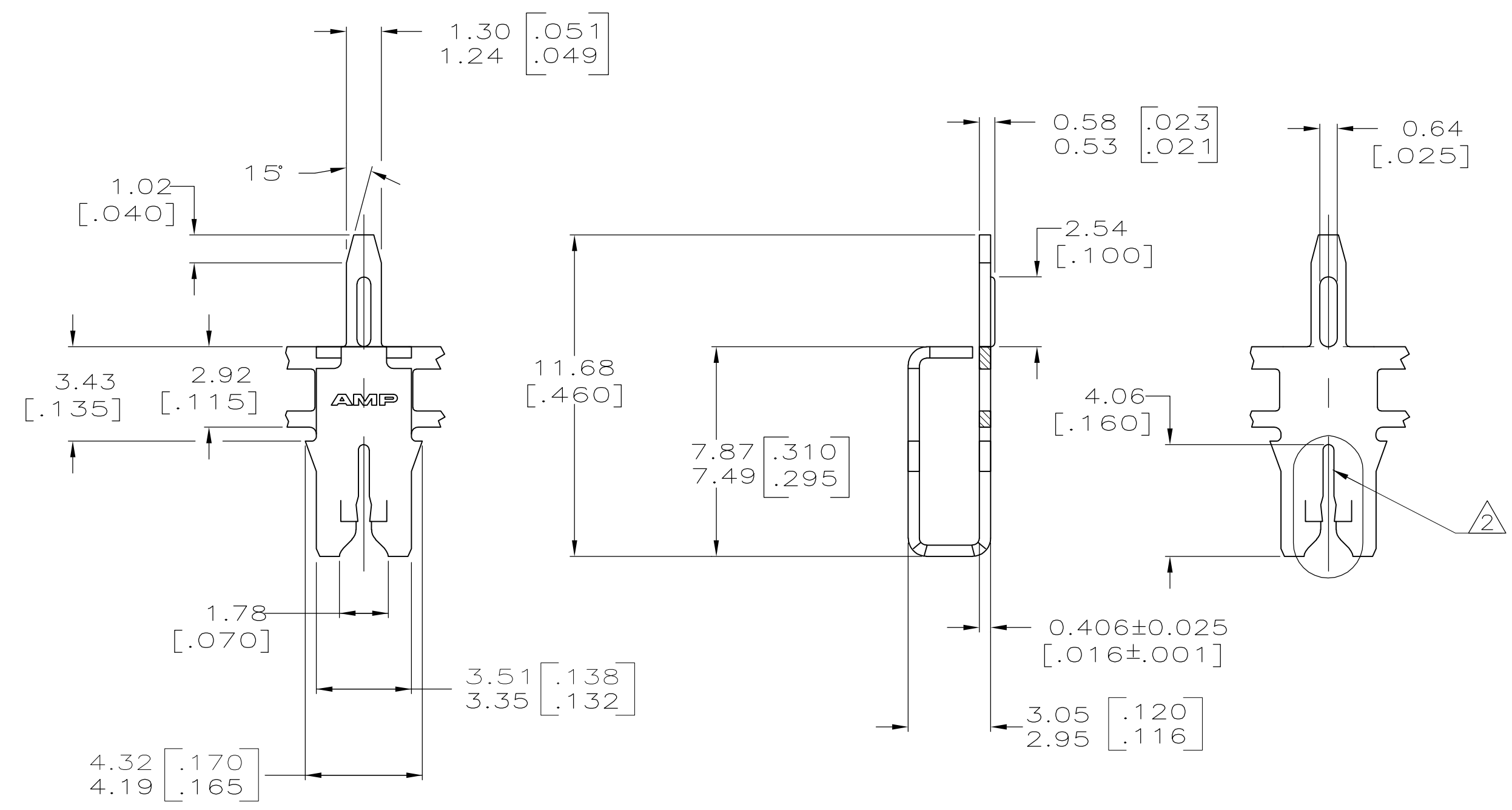
THIS DRAWING IS UNPUBLISHED. RELEASED FOR PUBLICATION
 © COPYRIGHT - By TE CONNECTIVITY ALL RIGHTS RESERVED.

REVISIONS				
P	LTR	DESCRIPTION	DATE	APVD
D2		REACTIVATE & REMOVE ALUMINIUM WIRE RANGE	23JUN17	SV PKV

IDENTIFICATION NUMBER 15 FOR MAGNET WIRE RANGE



- 1 CONTINUOUS STRIP ON REELS WITH TERMINALS LOCATED ON 5.59 [.220] CENTERS.
- 2 SLOT TERMINATES A SINGLE COPPER MAGNET WIRE ONLY. COPPER RANGE: 0.64-0.81mm [#22-#20] AWG.
- 3 TIN OVER NICKEL UNDERPLATE



63660-1
 PART NUMBER

THIS DRAWING IS A CONTROLLED DOCUMENT.		DWN MICHAEL S. FEHER 8/14/92																				
DIMENSIONS: INCHES		CHK PHILLIP M. FORTNEY 8/18/9																				
TOLERANCES UNLESS OTHERWISE SPECIFIED:		APVD -	NAME POST, SOLDER, MAG-MATE																			
<table border="0"> <tr><td>0 PLC</td><td>±</td><td>-</td></tr> <tr><td>1 PLC</td><td>±</td><td>-</td></tr> <tr><td>2 PLC</td><td>±</td><td>0.25 [.010]</td></tr> <tr><td>3 PLC</td><td>±</td><td>-</td></tr> <tr><td>4 PLC</td><td>±</td><td>-</td></tr> <tr><td>ANGLES</td><td>±</td><td>1°</td></tr> </table>		0 PLC	±	-	1 PLC	±	-	2 PLC	±	0.25 [.010]	3 PLC	±	-	4 PLC	±	-	ANGLES	±	1°	PRODUCT SPEC 108-2012	SIZE A2	
0 PLC	±	-																				
1 PLC	±	-																				
2 PLC	±	0.25 [.010]																				
3 PLC	±	-																				
4 PLC	±	-																				
ANGLES	±	1°																				
MATERIAL 4M BRASS		FINISH -3	APPLICATION SPEC 114-2046	CAGE CODE 00779																		
			DRAWING NO C=63660	RESTRICTED TO -																		
			WEIGHT	SCALE 6:1																		
			CUSTOMER DRAWING	SHEET 1 of 1																		
				REV D2																		