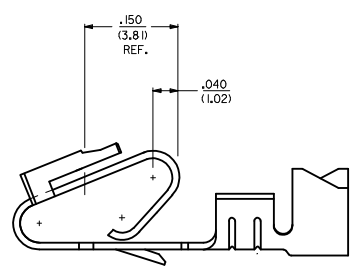
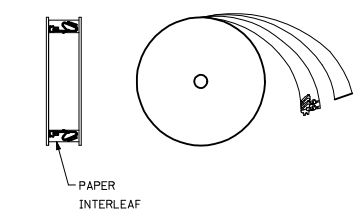


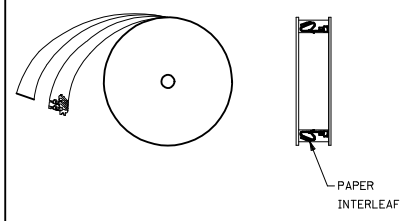
ALTERNATE GEOMETRY  
SEE NOTE 10



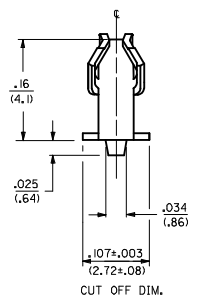
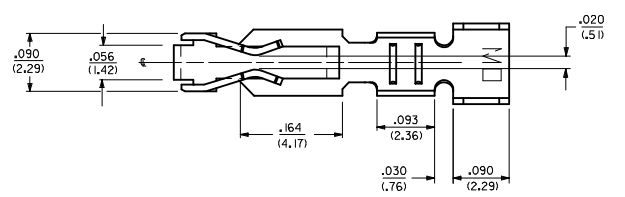
SELECTIVE PLATING  
LOCATION



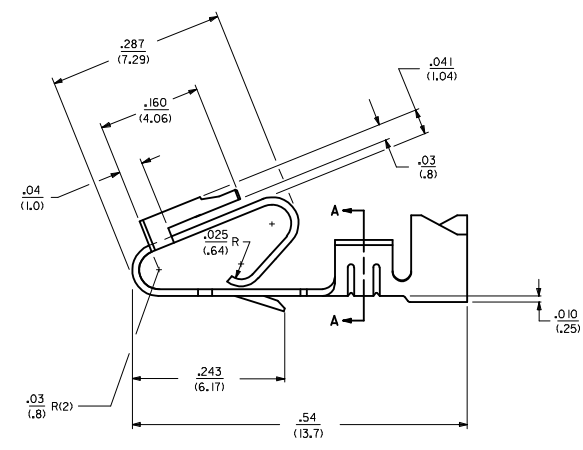
WINDING DETAIL "A"



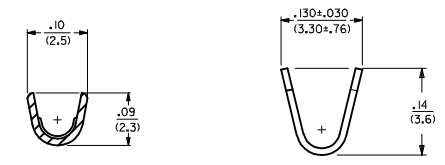
WINDING DETAIL "B"



CUT OFF DIM.



- NOTES:
- MATERIAL: SEE LEGEND
  - FINISH:
    - 909 - OVERALL HOT TIN DIP: .000100/(0.00254) MIN.
    - 154 - OVERALL TIN: .000100/(0.00254) MIN. OVER .000050/(0.00127) MIN. NICKEL.
    - 555 - SELECT HARD GOLD: .000015/(0.00038) MIN. OVERALL NICKEL: .000030/(0.00076) MIN.
    - 558 - SELECT HARD GOLD: .000030/(0.00076) MIN. OVERALL NICKEL: .000050/(0.00127) MIN. OVERALL HARD GOLD FLASH: .000002/(0.00005) MIN.
    - 561 - SELECT HARD GOLD: .000030/(0.00076) MIN. OVERALL NICKEL: .000050/(0.00127) MIN.
  - PRODUCT SPECIFICATION: PS-40-02
  - PACKAGING SPECIFICATION: CHAIN FORM: SEE PK-6838-001  
LOOSE FORM: SEE PK-2759-001
  - TERMINAL FOR USE IN HOUSING SERIES 6442 AND 41695.
  - SEE 7258 SERIES FOR THIS PART WITH CRIMP FOR 22-26 AWG. WIRE.
  - CRIMP FOR 18 TO 20 GA. WIRE WITH MAX. INSULATION DIA. OF .100/(2.79).  
STRIP LENGTH OF .125/100 / (3.18/2.54)
  - DIMENSIONS GIVEN ACROSS CENTERLINES ARE SYMMETRICAL ABOUT THOSE CENTERLINES WITHIN HALF THE TOTAL TOLERANCE.
  - THIS PART CONFORMS TO CLASS B REQUIREMENTS OF COSMETIC SPECIFICATION PS-45499-002.
  - ALTERNATE GEOMETRY PRESENT ON SOME PART NUMBERS. SEE SHEET 2.
  - TEXT ON PART IS FOR REFERENCE ONLY. TEXT AND TEXT LOCATION MAY VARY DEPENDING ON PART NUMBER AND/OR TOOL.



SECTION A-A

LEGEND: 6838- ( )

WINDING  
A= PER DETAIL A  
BLANK= PER DETAIL B

FORM  
BLANK= CHAIN  
L= LOOSE

PLATING  
SEE NOTE 2

MATERIAL:  
(.27)/.0106 THK  
BLANK=BRASS  
A=PHOS BRONZE

NOTE 11 ADDED DEC NO: UJF2018-0013 DRAWN BY: AS CHYK: SWARG APPR: SWARG 2017/07/28	QUALITY SYMBOLS	GENERAL TOLERANCES (UNLESS SPECIFIED)	DIMENSION STYLE	SCALE	DESIGN UNITS	THIRD ANGLE PROJECTION
	▽=0	mm INCH	IN/MM	---	INCH	☉
	▽=0	4 PLACES ± --- ± ---	DRAWN BY DATE	TITLE		
	▽=0	3 PLACES ± .25 ± .015	CHECKED BY DATE	TRIFURCON TERMINAL CRIMP TYPE, .156 CENTERS 18 TO 20 AWG WIRE		
	1 PLACE ± 0.36 ± ---	ANGULAR ±1/2°	APPROVED BY DATE	MOLEX INCORPORATED		
		DRAFT WHERE APPLICABLE MUST REMAIN WITHIN DIMENSIONS	MATERIAL NO.	DOCUMENT NO.		
			SEE CHART	SD-6838		
			SIZE D	THIS DRAWING CONTAINS INFORMATION THAT IS PROPRIETARY TO MOLEX INCORPORATED AND SHOULD NOT BE USED WITHOUT WRITTEN PERMISSION		

2	AR
1	AS
	SHT REV

20 19 18 17 16 15 14 13 12 11 10 9 8 7 6 5 4 3 2 1

6838-(\*)\*\*

PART NO.	ENG. NO.	
08-50-0187	6838-(P909)	SEE NOTE 1
08-50-0189	6838-(P909)L	SEE NOTE 1
08-50-0275	6838-(P909)-A	

6838-A(\*)\*\*

PART NO.	ENG. NO.	
08-58-0187	6838-A(P558)	
08-58-0189	6838-A(P558)L	
08-52-0112	6838-A(P909)	SEE NOTE 1
08-52-0113	6838-A(P909)L	SEE NOTE 1
08-50-0024	6838-A(154)	
08-50-0251	6838-A(154)L	
08-58-0105	6838-A(P555)	
08-58-0106	6838-A(P555)L	
08-58-0110	6838-A(P56 I)	SEE NOTE 1
08-58-0111	6838-A(P56 I)L	SEE NOTE 1
08-58-0118	6838-A(56 I)	
08-58-0119	6838-A(56 I)L	

NOTES:

1. PART MANUFACTURED WITH ALTERNATE GEOMETRY. SEE SHEET 1.

<b>SEE SHEET 1</b> IEC NO: UCF2012-1821 DRAWN BY: DRW:MMSTROH 2012/01/04 CHECKED BY: CHY:KH/KIPFER 2012/01/05 APPR:FSM/TH 2012/02/02	QUALITY SYMBOLS ▽=0 ▽=0 ▽=0	GENERAL TOLERANCES (UNLESS SPECIFIED)		DIMENSION STYLE <b>IN/MM</b>	SCALE ---	DESIGN UNITS INCH	THIRD ANGLE PROJECTION		
		4 PLACES #---# 3 PLACES #---# 2 PLACES #---# 1 PLACE #---#	mm INCH	DRAWN BY GUZIK	DATE 11/15/89	TITLE TRIFURCON TERMINAL CRIMP TYPE, .156 CENTERS 18 TO 20 AWG WIRE			
		ANGULAR ±1/2°		CHECKED BY PATEL	DATE 11/15/89	MOLEX INCORPORATED			
		DRAFT WHERE APPLICABLE MUST REMAIN WITHIN DIMENSIONS		APPROVED BY LENZ	DATE 11/15/89	MATERIAL NO. <b>SEE CHART</b>	DOCUMENT NO. SD-6838	SHEET NO. 2 OF 2	
THIS DRAWING CONTAINS INFORMATION THAT IS PROPRIETARY TO MOLEX INCORPORATED AND SHOULD NOT BE USED WITHOUT WRITTEN PERMISSION									

19 18 17 16 15 14 13 12 11 10 9 8 7 6 5 4 3 2 1