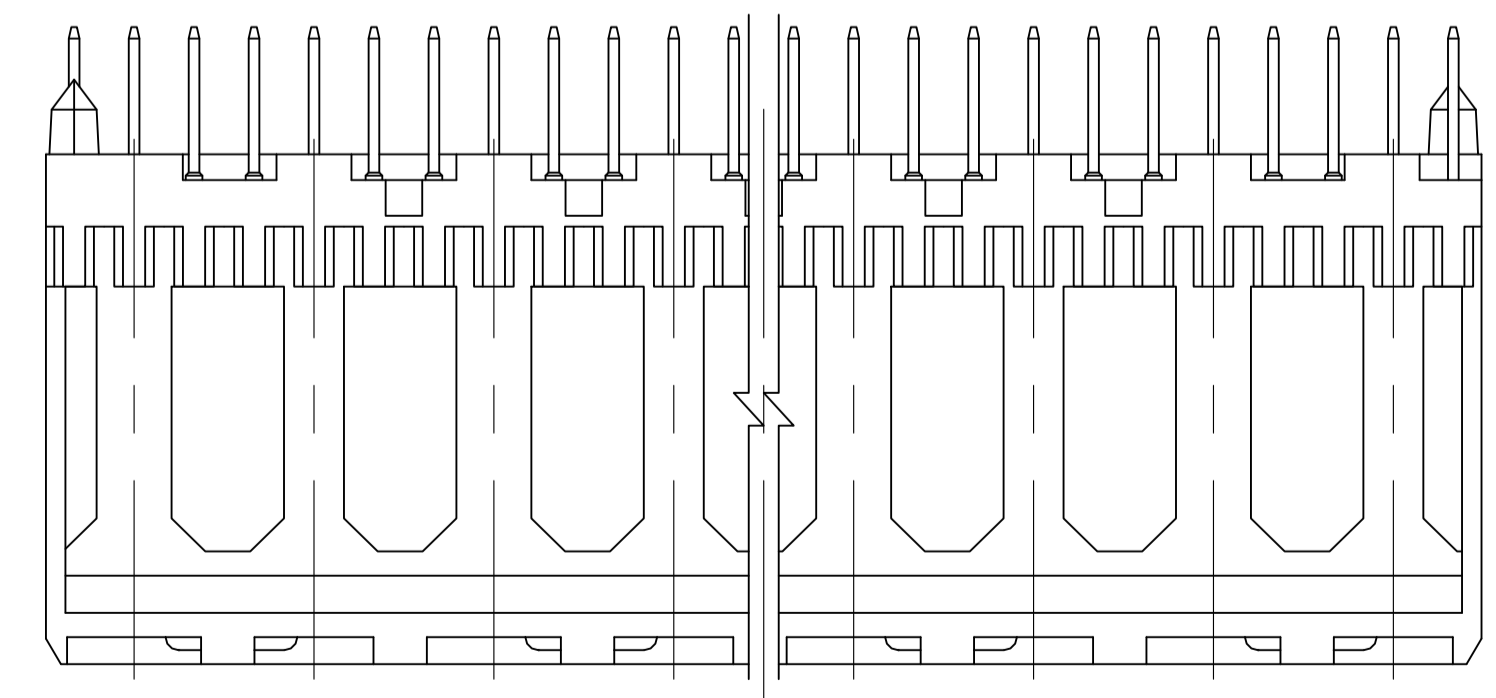
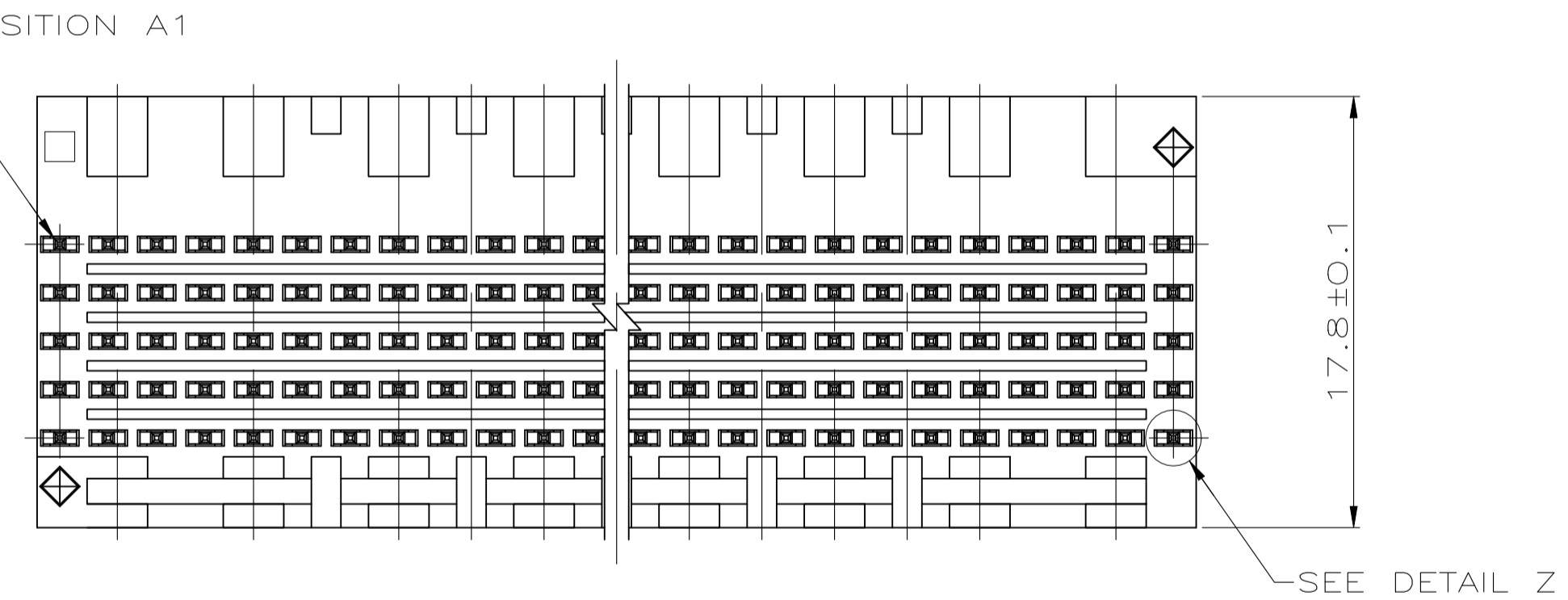
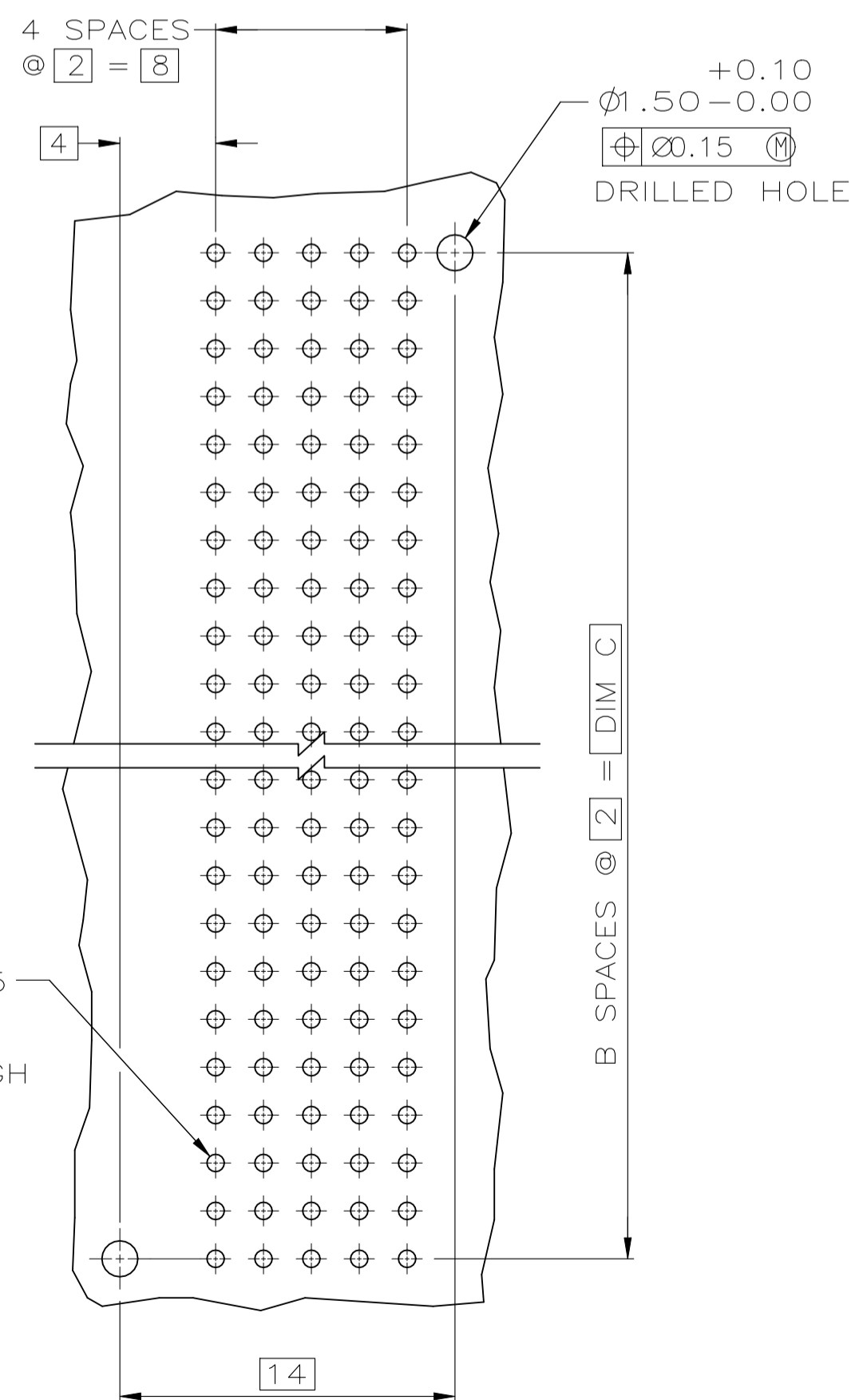
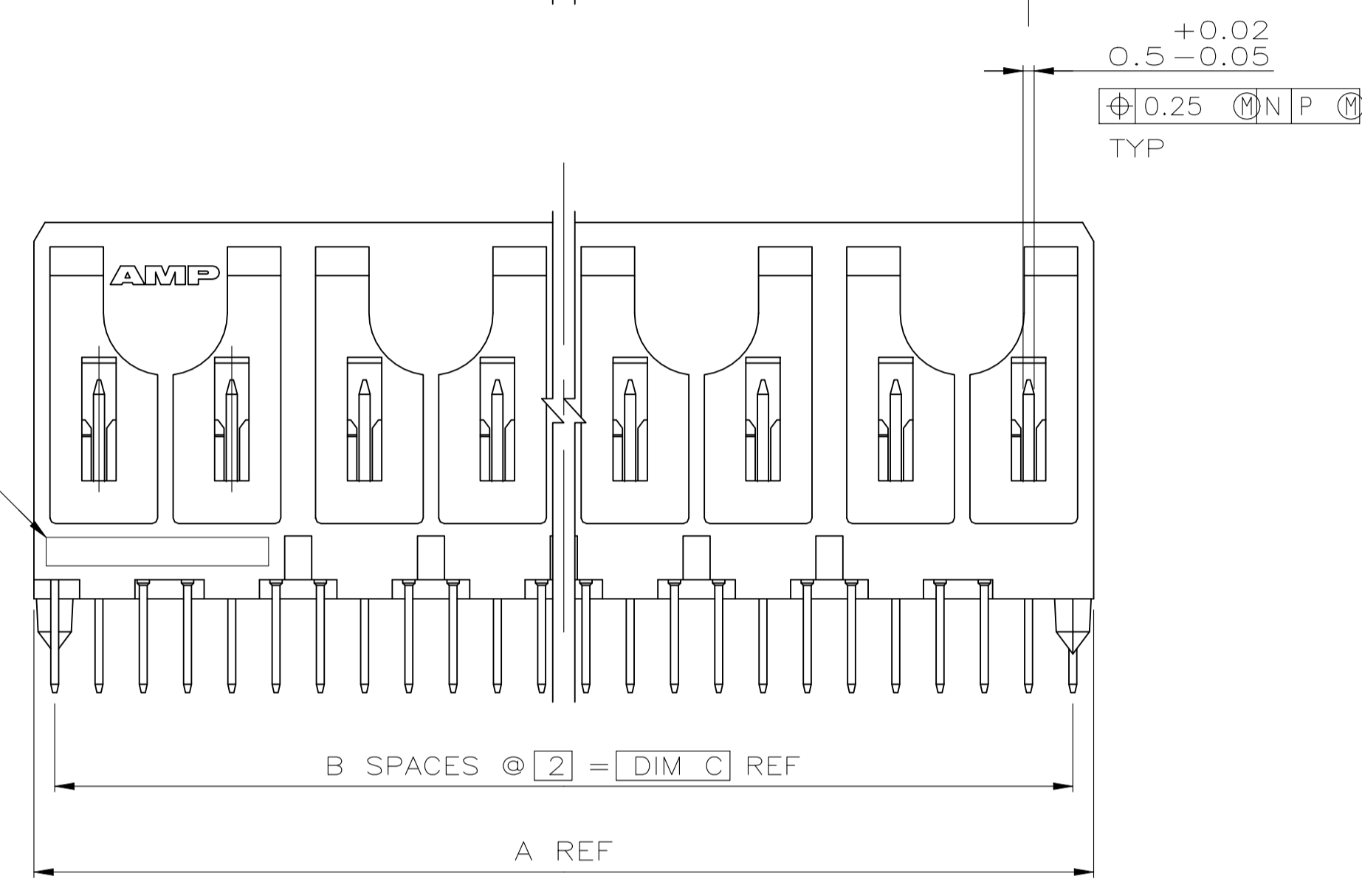
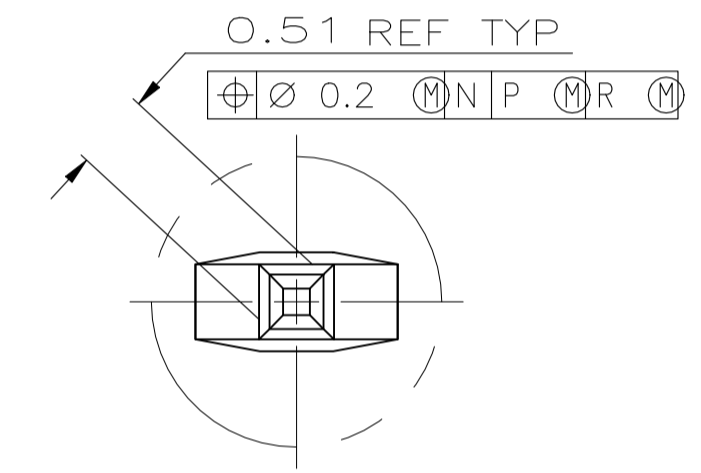
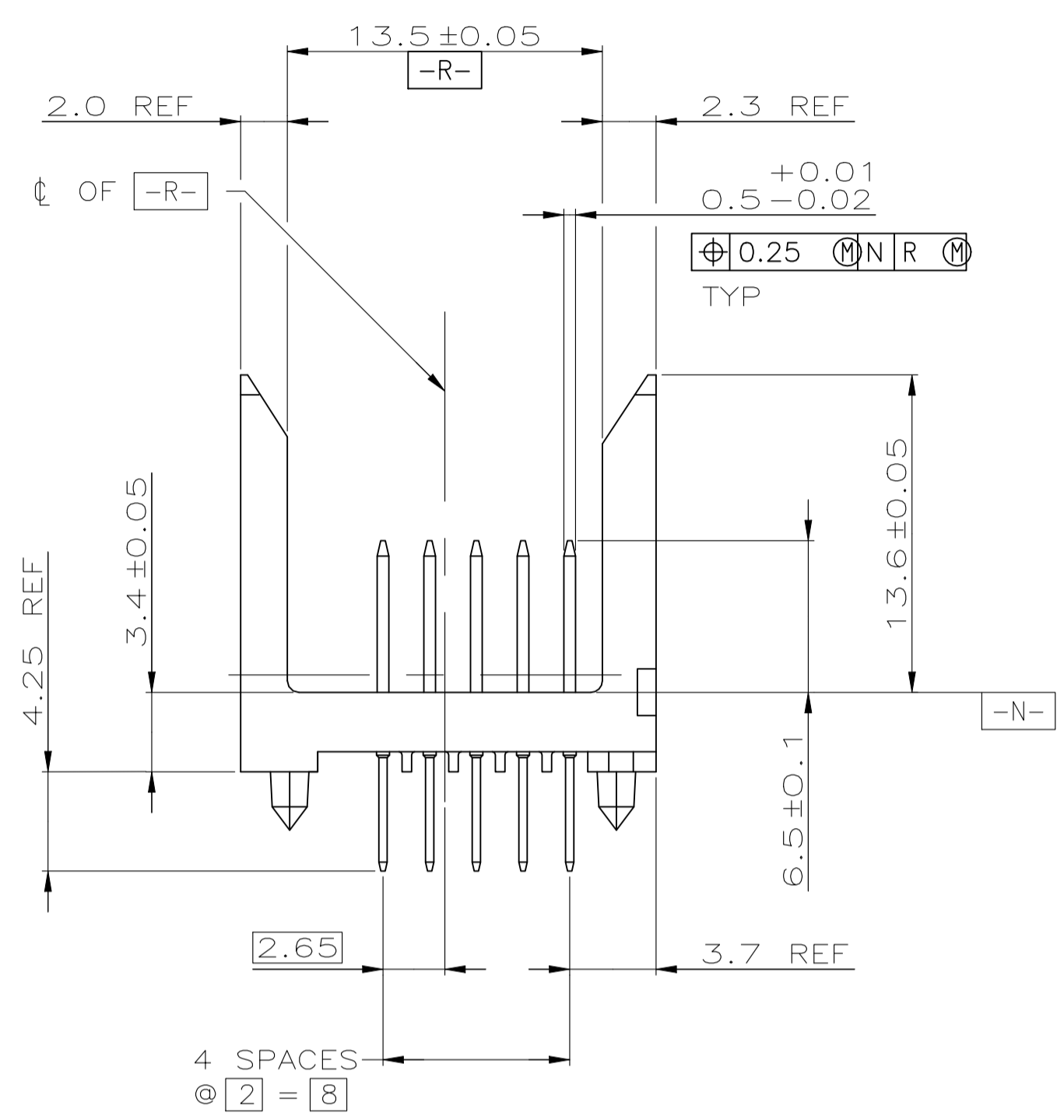
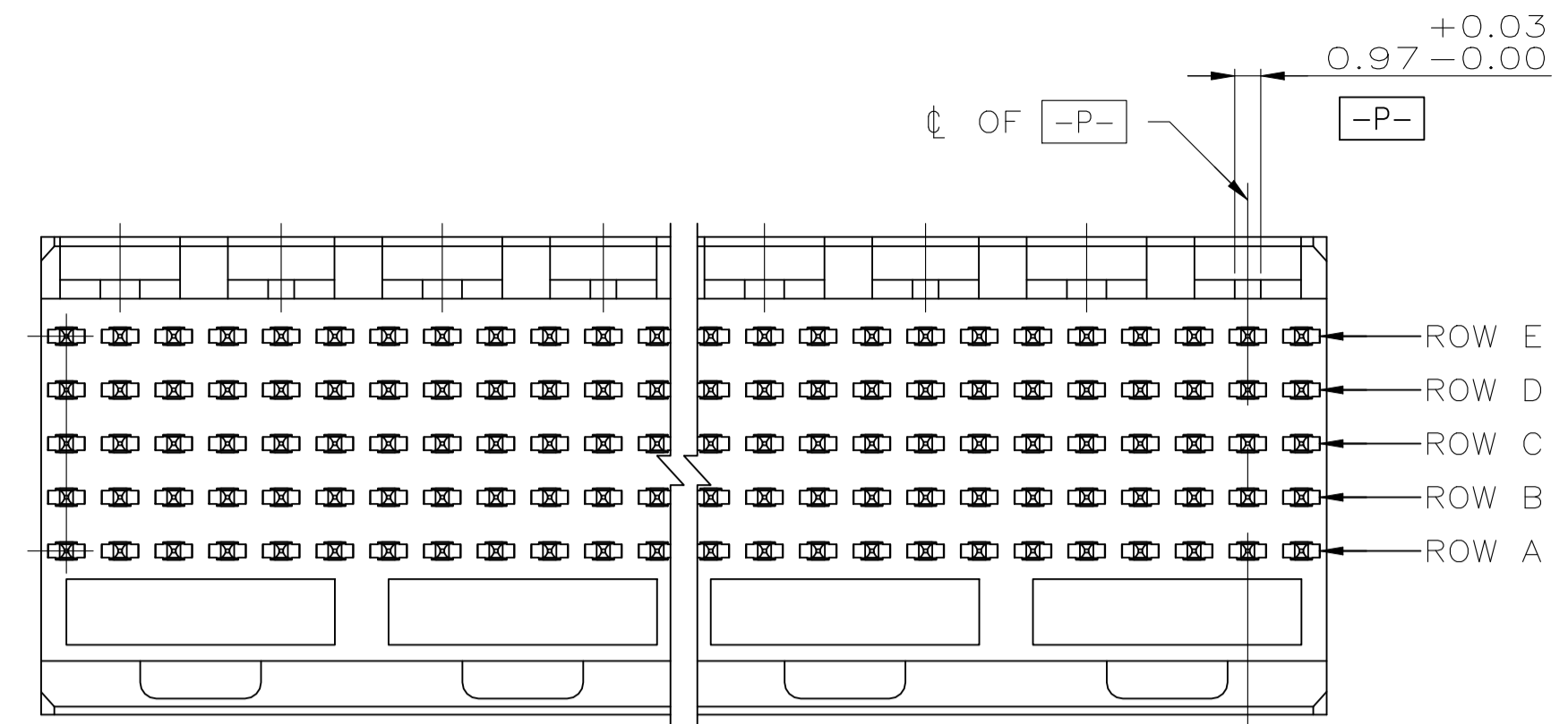


REVISIONS					
#	LTR	DESCRIPTION	DATE	DWN	APVD
K1		ECN-22-165236	19JUL2022	NV	HL

- ① HOUSING MATERIAL: LIQUID CRYSTAL POLYMER
COLOR: NATURAL.
- ② CONTACT MATERIAL: PHOSPHOR BRONZE
- ③ CONTACT FINISH:
UNDERPLATE (ENTIRE CONTACT):
0.00127 MIN NICKEL.
ON MATING SURFACES:
CONFORMS TO ALL TESTING SPECIFIED FOR TELCORDIA UNCONTROLLED ENVIRONMENT.
ON LEADS:
0.00381 MIN TIN-LEAD OVER UNDERPLATE.
LUBRICATION (ENTIRE CONTACT):
SURFACE CONDITIONER PER AMP SPEC 112-1002 AFTER PLATING.
- ④ PART MARKING LOCATED APPROXIMATELY AS SHOWN.
- ⑤ OBSOLETE PARTS: OBSOLETE CIS STREAMLINING PER D.RENAUD/D.SINISI



⑤	OBSOLETE	130	65	131.88	③	330	4-223000-1
	OBSOLETE	118	59	119.88	③	300	1-223000-0
⑤	OBSOLETE	106	53	107.88	③	270	223000-9
⑤	SUPERSEDED BY 5223000-8	94	47	95.88	③	240	223000-8
⑤	OBSOLETE	82	41	83.88	③	210	223000-7
	SUPERSEDED	70	35	71.88	③	180	223000-6
		58	29	59.88	③	150	223000-5
	OBSOLETE	46	23	47.88	③	120	223000-4
①	OBSOLETE	34	17	35.88	③	90	223000-3
	OBSOLETE	22	11	23.88	③	60	223000-2
①	OBSOLETE	10	5	11.88	③	30	223000-1

	C	B	A	FINISH	NO OF SIGNAL POSN	PART NUMBER
THIS DRAWING IS A CONTROLLED DOCUMENT.						
DWN: R. BUCHHEISTER 10/JAN/96						
CHK: D. BAECHTLE 11/JAN/96						
APR: D. SINISI 11/JAN/96						
NAME: ASSEMBLY, PIN, SIGNAL, VERTICAL, Z-PACK 2mm FB, 5 ROW, SOLDER LEAD						
APPLICATION SPEC: -						
MATERIAL: -						
FINISH: -						
WEIGHT: 0.000000						
SIZE: A1						
CAGE CODE: 00779						
DRAWING NO: C-223000						
CUSTOMER DRAWING						
SCALE: 4:1						
SHEET: 1 OF 1						
REV: K1						