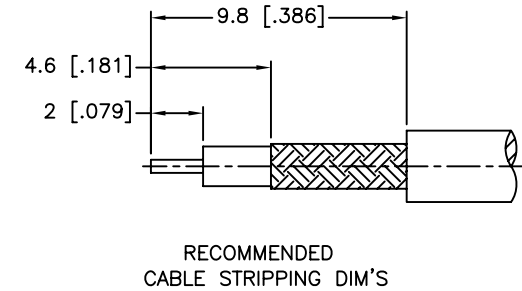
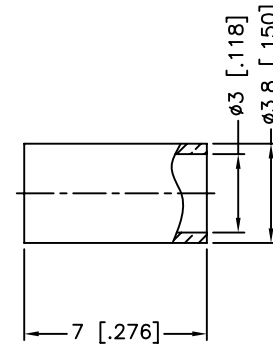
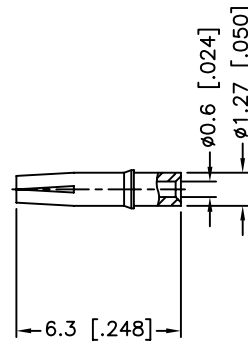
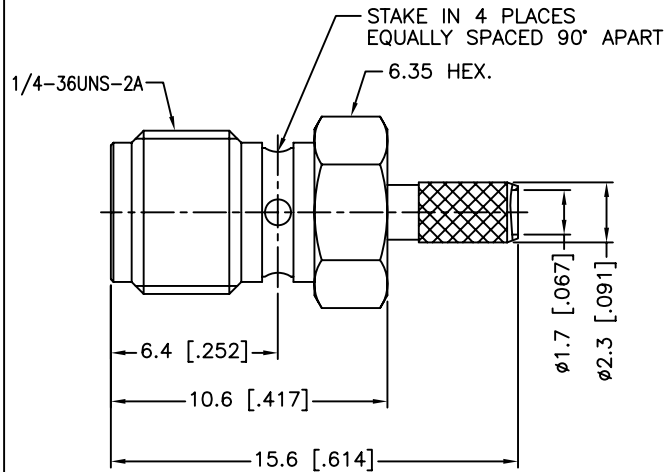


REV.	DATE	ECR NO.	DESCRIPTION
A	04/31/03	XXXXXX	UPDATE DRAWING FORMAT
B	06/20/11	2184	REMOVE THE WORD "BULKHEAD" FROM THE DESCRIPTION



NOTE:
 1. CRIMPED FERRULE
 HEX CRIMP SIZE 128"
 2. CONTACT PIN TO SOLDER

QTY	DESCRIPTION	MATERIAL	FINISH
1	FERRULE	COPPER	GOLD
1	CONTACT PIN	BER. COPPER	GOLD
1	INSULATOR	PTFE	NATURAL
1	BODY	BRASS	GOLD

UNLESS OTHERWISE SPECIFIED DIMENSIONS ARE IN MILLIMETERS. DIMENSIONS IN [] ARE IN INCHES AND FOR CUSTOMER REFERENCE ONLY.

UNLESS OTHERWISE SPECIFIED TOLERANCES FOR MILLIMETERS ARE:
 0.5 - 8mm \pm 0.20mm
 8 - 30mm \pm 0.40mm
 30 - 120mm \pm 0.50mm

UNLESS OTHERWISE SPECIFIED TOLERANCES FOR INCHES ARE:
 .020 - .315 \pm 0.007"
 .315 - 1.180 \pm 0.015"
 1.180 - 4.724 \pm 0.020"

DO NOT SCALE DRAWING

APPROVALS	DATE
DRAWN M.ZHANG	06/20/11
CHECKED	
ISSUED	
SHEET 1 OF 1	
CAD FILE C:/CONNEX/132229.DWG	

<h1>Amphenol Connex</h1>			
PART DESCRIPTION SMA CRIMP JACK (FOR RG-174/U,188A/U,316/U CABLE)			
PART NO. 132229			
DWG. NO.	132229.DWG	REV. B	SCALE NA