

PART NUMBER	REV	TERMINATOR	FEED TYPE	DESCRIPTION
1530503-1	A	LEADMAKER	MECH POST FEED	CUTS CARRIER
1530503-2	A	BENCH	MECH PRE FEED	CUTS CARRIER
1530503-6	A	LEADMAKER	MECH POST FEED	CONTINUOUS CARRIER
7-1530503-1	A	LEADMAKER	MECH POST FEED	-1 AND SPARE PARTS
7-1530503-2	A	BENCH	MECH PRE FEED	-2 AND SPARE PARTS
7-1530503-6	A	LEADMAKER	MECH POST FEED	-6 AND SPARE PARTS
7-1530503-7	A	-	-	SPARE PARTS KIT

CRIMP DATA TE TERMINAL TE CRIMP SPECS

TERMINAL NAME: SPLICE, AMPLIVAR, MINIATURE

CRIMP	SIZE	TYPE	RANGE
WIRE	.070 [1.78mm]	F	400-1300 CMA
INSUL	-	-	-

WIRE STRIP LENGTH: .119-.181 [3.02-4.60mm]

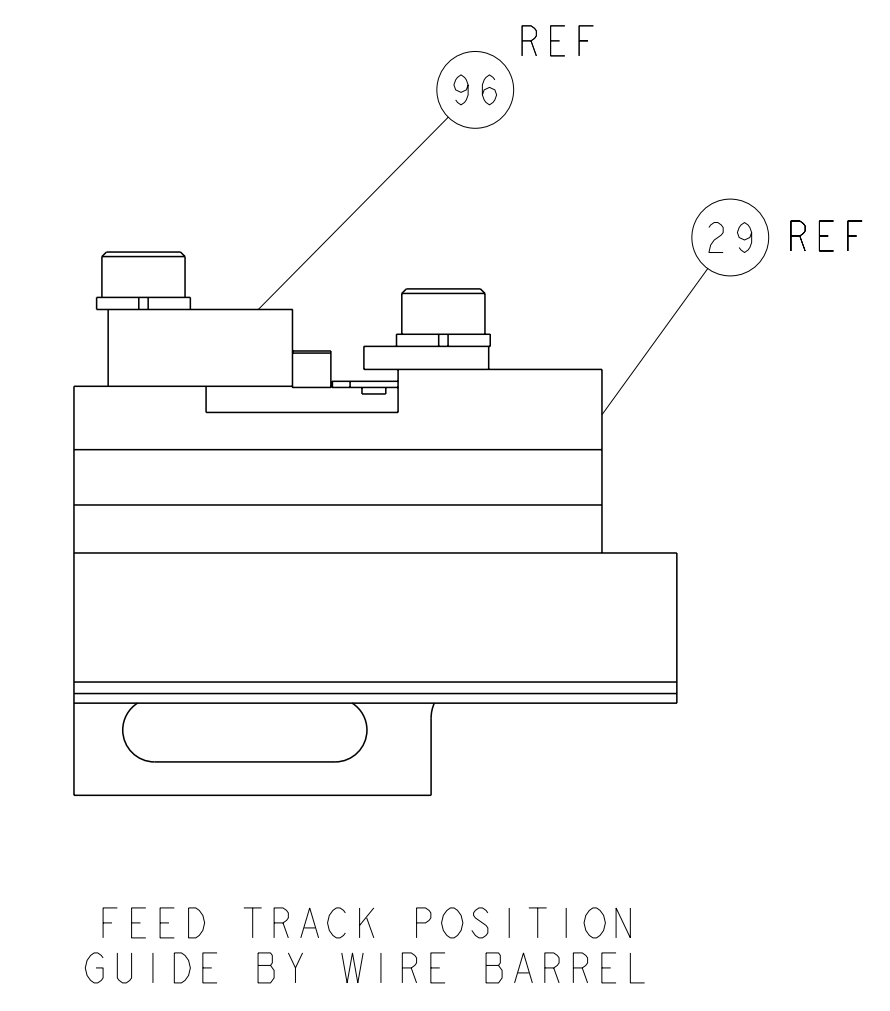
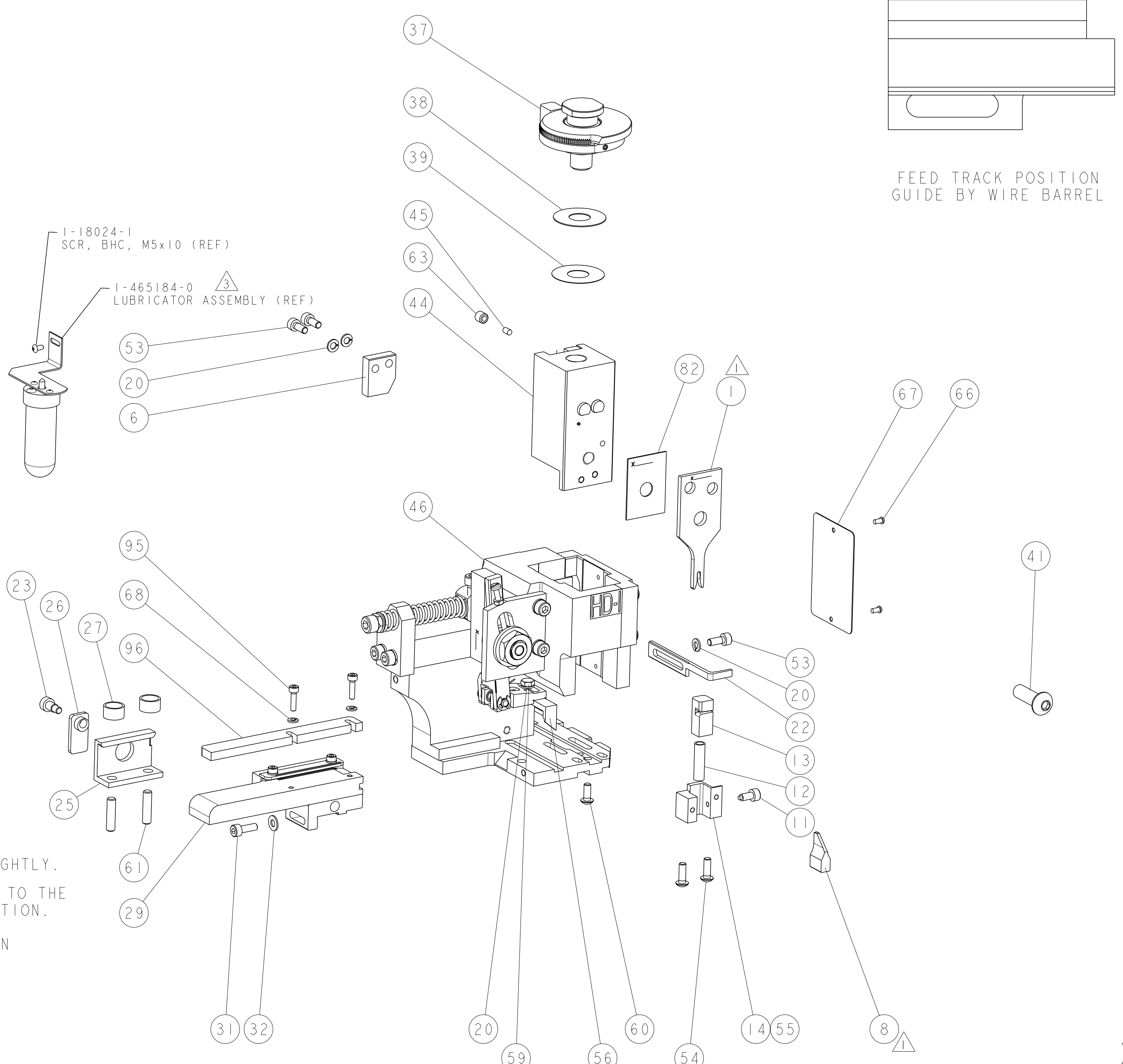
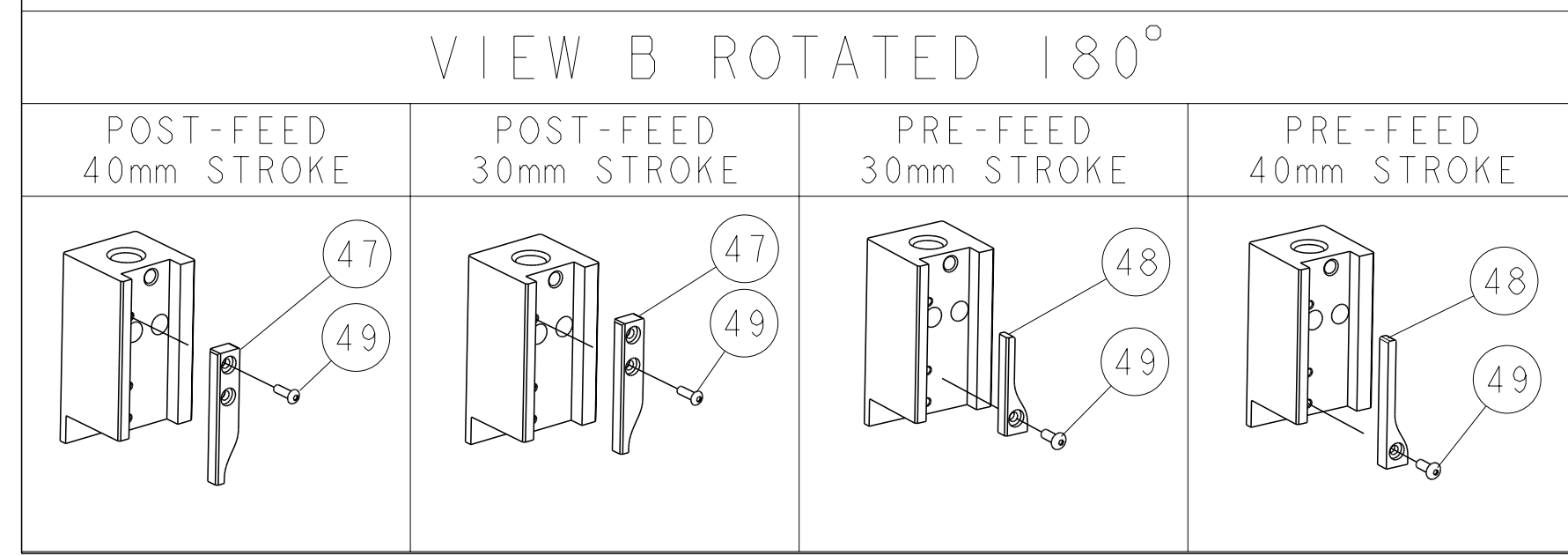
APPL INSTRUCTIONS: 408-8322 & 408-8490

TERMINAL APPL SPEC: 114-2006 FEED: .330 [8.38mm]

TERMINALS APPLIED

WIRE SIZE	CRIMP HEIGHT	REF SETTING
(1) 24 AWG + .025 SOLID	1.17 ± 0.05mm [.046 ± .002]	D4
(1) 24 AWG + (1) 22 AWG	1.17 ± 0.05mm [.046 ± .002]	D4
(2) 24 AWG	1.17 ± 0.05mm [.046 ± .002]	D3

- RECOMMENDED SPARE PARTS.
- GREASE RAM, CAM, CAM FOLLOWER AND FEED ROD LIGHTLY.
 - CERTAIN TERMINALS REQUIRE LUBRICATION. REFER TO THE APPLICATOR INSTRUCTION SHEET FOR MORE INFORMATION.
 - LUBRICATE DAILY PER THE APPLICATOR INSTRUCTION SHEET SUPPLIED WITH THE APPLICATOR.
- * WARNING**
ON INSTALLATION, SET WIRE DISC TO LARGEST WIRE SIZE SETTING. USE OF SETTINGS BELOW MIN. REQUIRED CRIMP HEIGHT SETTING WILL CAUSE DAMAGE TO CRIMP TOOLING.



QTY	DESCRIPTION	ITEM NO
- 1	2-189124-6 GUIDE, FRONT STRIP	96
- 2	18023-5 SCR, SKT HD CAP M3 X 12.0	95
- 1	455888-6 SPACER, CRIMPER	82
- 1	1338705-3 DOCUMENTATION PACKAGE	71
- 2	18025-1 WASHER, SPRG LOCK, REG M3	68
- 1	461264-5 PLATE, IDENTIFICATION	67
- 2	21017-2 SCREW, DRIVE	66
- 1	3-18031-0 SCR, SET, CUP POINT M6 X 6.0	63
- 2	2-18032-5 SCR, SET, FLT POINT M5 X 20.0	61
- 1	18024-7 SCR, BTN SKT HD CAP (M4 X 10.0)	60
- 1	5-18022-2 SCR, HEX HD CAP M4 X 8.0	59
- 1	1338683-4 FEED PAWL	56
-	1338723-1 HOLDER, SHEAR, REAR [NO CUT]	55
- 2	18024-8 SCR, BTN SKT HD CAP (M4 X 12.0)	54
- 2	1-18023-1 SCR, SKT HD CAP M4 X 10.0	53
- 1	18024-3 SCR, BTN SKT HD CAP (M3 X 10.0)	49
-	1338675-1 CAM, UNIVERSAL PRE FEED	48
- 1	1338676-1 CAM, UNIVERSAL POST-FEED	47
- 1	1-1320999-1 APPLICATOR SUBASSEMBLY, HDI	46
- 1	690191-1 PLUG, NYLON	45
- 1	1633724-1 RAM, (SIDE FEED)	44
- 1	2-18024-6 SCR, BTN SKT HD CAP (M8 X 25.0)	41
- 1	690125-1 SHIM SUB-ASSY	39
- 1	469367-9 SHIM	38
- 1	879103-4 FINE ADJUST HEAD ASSEMBLY	37
- 1	18027-2 WASHER, FLAT, REG M4	32
- 1	1-18023-2 SCR, SKT HD CAP M4 X 12.0	31
- 1	1633082-7 STRIP GUIDE ASSEMBLY	29
- 2	1-22284-0 SPRING, COMPRESSION	27
- 1	356835-1 LEVER, DRAG RELEASE	26
- 1	240792-1 DRAG, TERMINAL	25
- 1	980371-4 SCR, SKT HD SHLDR 5.0 DIA X 6.0	23
- 1	690472-2 STRIPPER	22
- 1	1-18023-1 SCR, SKT HD CAP M4 X 10.0	21
- 4	18025-2 WASHER, SPRG LOCK, REG M4	20
- 1	1320920-1 SHEAR HOLDER, REAR [CUTTING]	14
- 1	1-690463-8 FLOATING SHEAR, REAR	13
- 1	3-22280-3 SPRING, COMPRESSION	12
- 1	356885-4 STOP, SHEAR	11
1	1-1633733-2 ANVIL, WIRE	8
-	-	7
- 1	690468-2 DEPRESSOR SHEAR, REAR	6
-	-	4
1	-	3
-	-	2
1	3-456404-5 CRIMPER, WIRE PREMIUM	1

THIS DRAWING IS A CONTROLLED DOCUMENT.

APPROVED: T.J. ELBIN

DATE: 17MAR2011

NAME: T.J. ELBIN

PRODUCT SPEC: FINE ADJUST SIDE FEED HDI APPLICATOR

APPLICATION SPEC: See Table

SIZE: A100779

CAGE CODE: C=1530503

SCALE: 3:5

SHEET: 1 OF 1

REV: A1