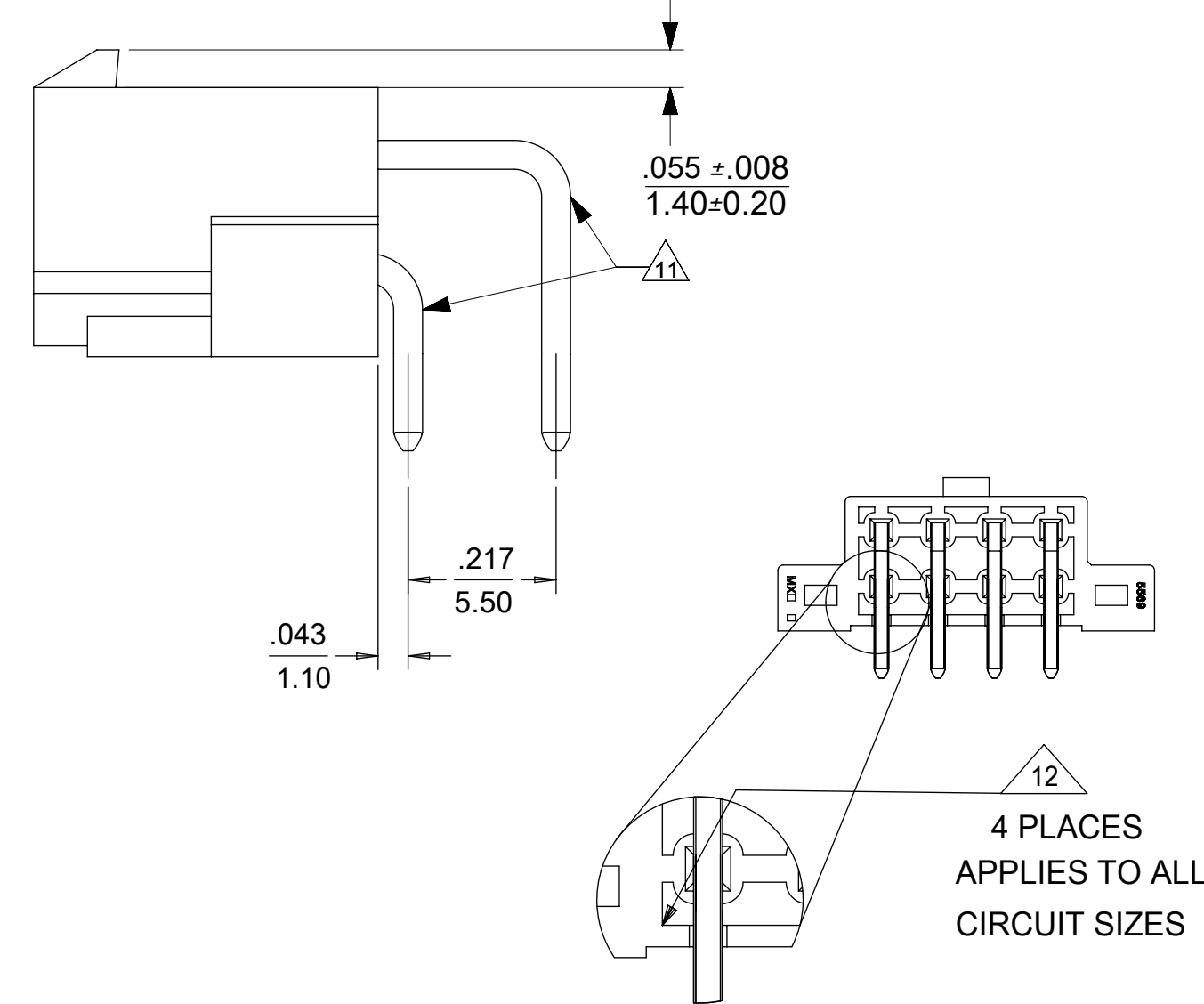
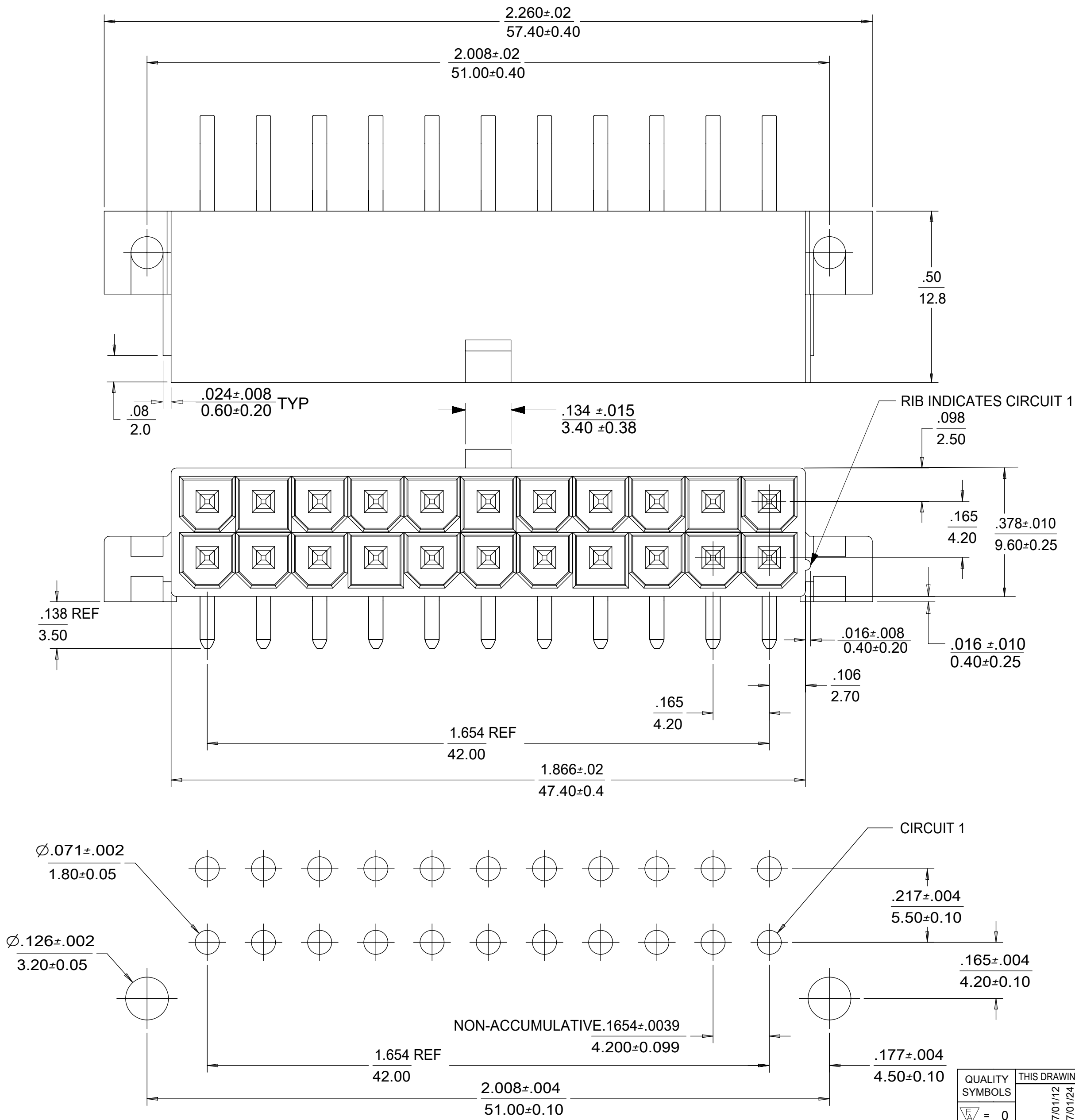


- NOTES:
- HOUSING MATERIAL: NYLON 6/6, U.L. 94V-0, COLOR NATURAL.  
TERMINAL MATERIAL: BRASS
  - FINISH: HOUSING: NONE  
TERMINAL: .00030/.00076 MIN SELECT GOLD AND  
.000100/.00254 MIN SELECT MATTE TIN OVER  
.000050/.00127 MIN NICKEL OVERALL
  - PRODUCT SPECIFICATION: PS-45750-001 WHEN MATED TO 45750 TERMINAL  
PS-5556-001 WHEN MATED TO 5556 TERMINAL  
PS-44476-001 WHEN MATED TO 44476 TERMINAL
  - PACKAGING: TRAY PACK PER PK-5569-004.
  - PART MATES WITH MINI-FIT JR RECEPTACLE 46212.
  - PART IS DESIGNED FOR USE WITH 4-40 OR M3 SELF-TAPPING SCREWS.
  - DISCOLORATION IN THE BANDOLIER CARRIER AREA OF THE PIN IS INHERENT TO THE PLATING PROCESS AND IS DUE TO THE MASKING EFFECT OF THE CARRIER. THIS DISCOLORATION IS IN A NON-FUNCTIONAL AREA OF THE PIN AND WILL NOT AFFECT THE PERFORMANCE OF THE HEADER ASSEMBLY.
  - PARTS ARE NOT DESIGNED FOR CURRENT SHARING.
  - CONNECTORS ARE NOT TO BE MATED OR UNMATED WHILE CIRCUITS ARE LIVE.
  - PART CONFORMS TO CLASS "B" REQUIREMENTS OF COSMETIC SPECIFICATION PS-45499-002.
  - FORMING MARKS ON PINS ARE ACCEPTABLE.
  - CORNER CORE-OUTS ARE OPTIONAL AND MAY OR MAY NOT BE PRESENT.
  - TEXT ON PART IS FOR REFERENCE ONLY. TEXT AND TEXT LOCATION MAY VARY DEPENDING ON PART NUMBER AND/OR TOOL.



RECOMMENDED HOLE LAYOUT FOR .070/1.78 MAX THICK PC BOARD  
VIEWED FROM COMPONENT SIDE

QUALITY SYMBOLS		THIS DRAWING CONTAINS INFORMATION THAT IS PROPRIETARY TO MOLEX ELECTRONIC TECHNOLOGIES, LLC AND SHOULD NOT BE USED WITHOUT WRITTEN PERMISSION			
▽ = 0	ADD 3.4 & 1.4 DIM	GENERAL TOLERANCES (UNLESS SPECIFIED)		DIMENSION UNITS	SCALE
▽ = 0		MM	INCH	IN/MM	4:1
▽ = 0		4 PLACES ±	±	DRWN BY	DATE
▽ = 0		3 PLACES ±	± 0.015	ADRATNOL	2006/04/26
▽ = 0		2 PLACES ±	± 0.38 ± 0.015	CHK'D BY	DATE
▽ = 0		1 PLACES ±	± 0.38 ±	GPOLGAR	2006/04/26
▽ = 0	0 PLACES ±	±	APPR BY	DATE	
▽ = 0			JCOMERCI	2006/04/26	
▽ = 0		ANGULAR TOL = 0.5	DRAWING SIZE	THIRD ANGLE PROJECTION	
▽ = 0		DRAFT WHERE APPLICABLE MUST REMAIN WITHIN DIMENSIONS	C		
▽ = 0					

PRODUCT CUSTOMER DRAWING		
SERIES	MATERIAL NUMBER	CUSTOMER
46214	462141001	GENERAL MARKET
DOCUMENT NUMBER	DOC TYPE	DOC PART SHEET NUMBER
SD-46214-001	PSD	000 1 OF 1