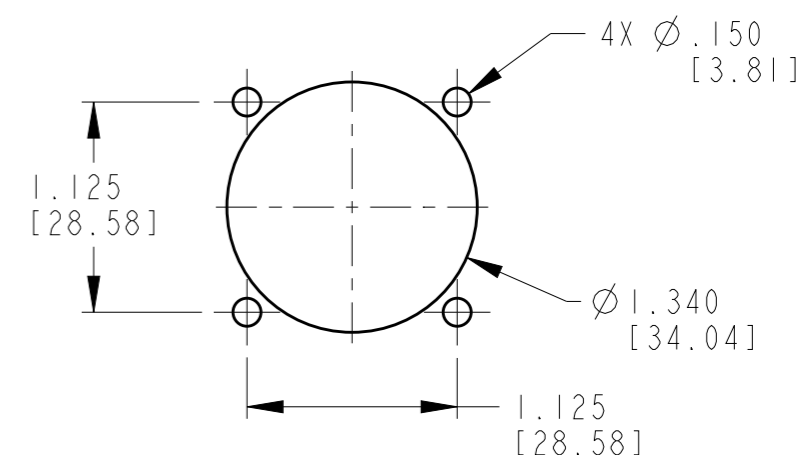
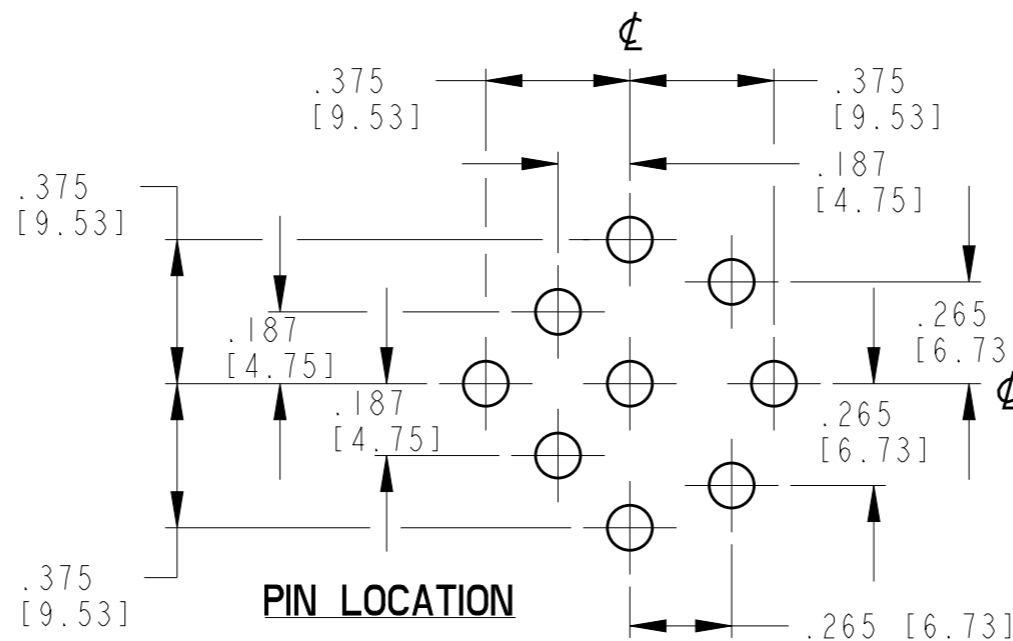
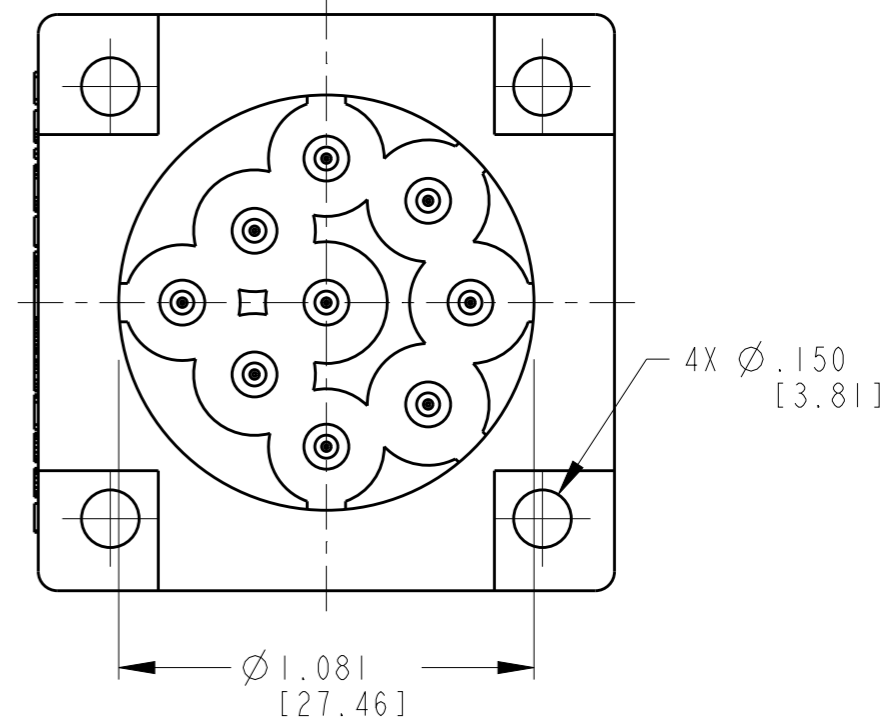
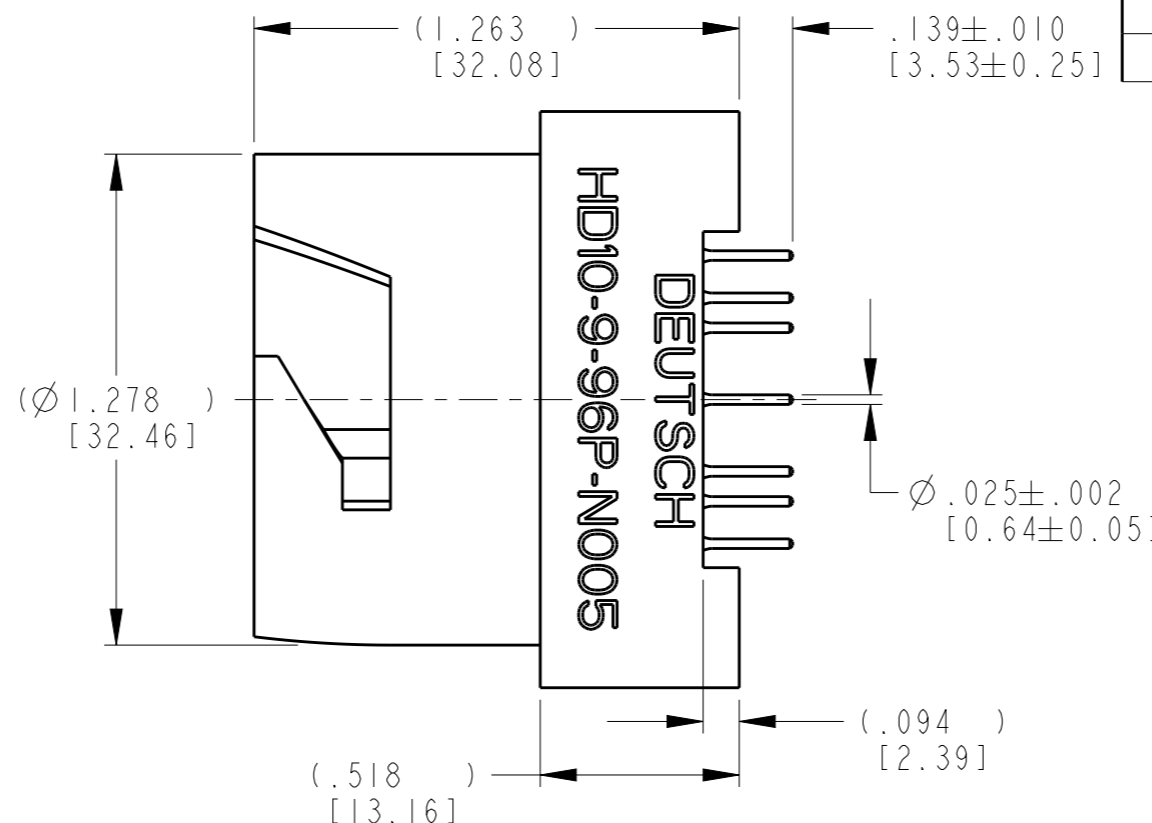
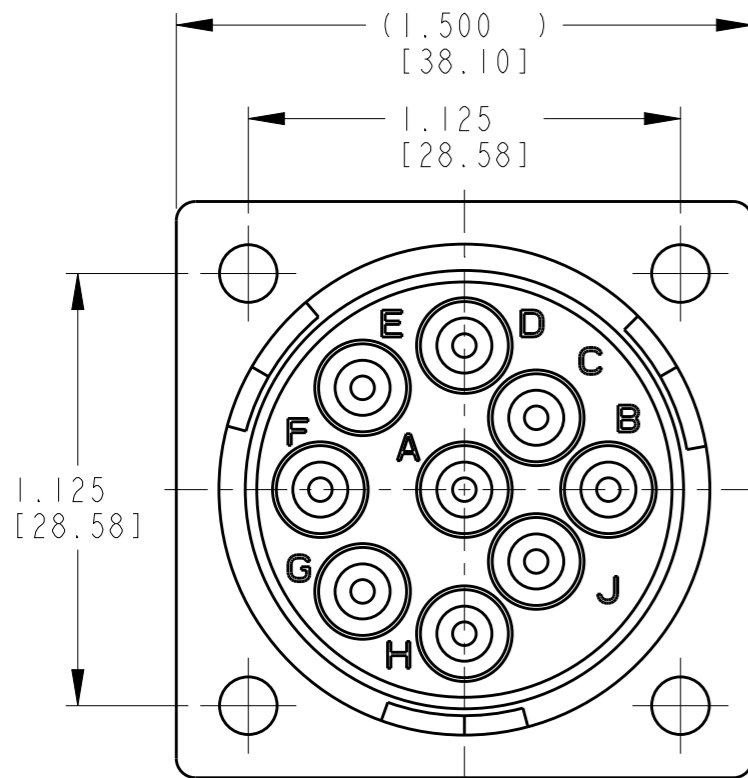


THIS DRAWING IS UNPUBLISHED  
RELEASED FOR PUBLICATION 2015  
© COPYRIGHT 1986 BY TE CONNECTIVITY ALL RIGHTS RESERVED.

LOC	DIST	REVISIONS			
P	LTR	DESCRIPTION	DATE	DWN	APVD
	C	REVISED REDRAWN PER E.O. PI9388	13OCT2006	AM	RDR
	C1	REVISED PER ECO-14-015729	16OCT2014	JA	DM
	C2	REVISED PER ECO-14-018705	15DEC2014	JA	DM
	D	REVISED PER ECO-15-011302	11DEC2015	JA	DM



3 CONTACT PLATING: MATING SIDE AND PCB SIDE: TIN (ROHS COMPLIANT) OVER NICKEL.

2 HOUSING MATERIAL: PPS 40% GF (BLACK)

1. THIS RECEPTACLE MATES WITH HD16-9-96SX-XXXX (XXXX = ALL MODIFICATIONS) CONSULT FACTORY FOR MODIFICATIONS

NOTES:

TE INTERNAL PN	DEUTSCH PN
HD10-9-96P-N005	HD10-9-96P-N005

THIS DRAWING IS A CONTROLLED DOCUMENT.		DWN T. SCARPETTA 02JUN1986	TE Connectivity	
DIMENSIONS: INCHES [mm]		CHK JEFF ALBERS 21JUN1986		
TOLERANCES UNLESS OTHERWISE SPECIFIED:		APVD JEFF ALBERS 21JUN1986	NAME RECEPTACLE, HEADER, FLANGE SHELL SIZE 9, 9 PIN, #16 SIZE HD10 SERIES	
0 PLC $\pm$	1 PLC $\pm$	PRODUCT SPEC N/A	SIZE A3	CAGE CODE 4AFU8
2 PLC $\pm$	3 PLC $\pm .005$ [0.13]	APPLICATION SPEC N/A	DRAWING NO. HD10-9-96P-N005	RESTRICTED TO GEN
4 PLC $\pm$	ANGLES $\pm$	WEIGHT 41.12g	SCALE 2:1	SHEET 1 OF 1
MATERIAL	FINISH	Customer Drawing	REV D	