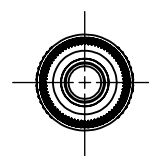
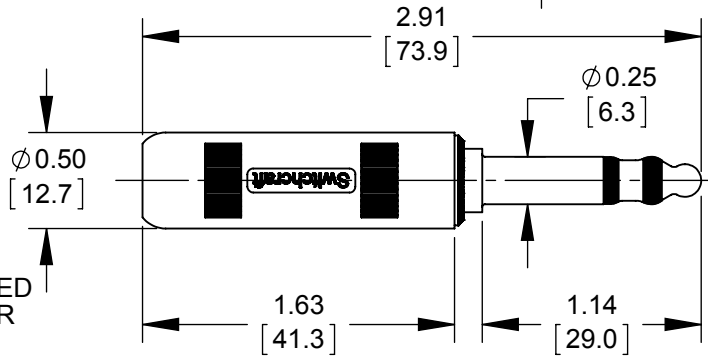
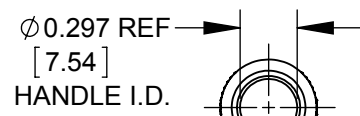
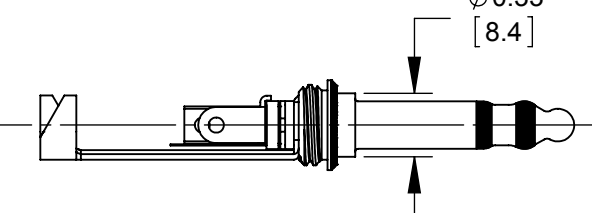


PART NUMBER	FINISH
482NC	RED ENAMEL
483NC	BLACK CHROME



NOTES:

- MATERIALS:  
TIP ROD, RING & PLUG BODY - BRASS, NICKEL PLATED  
INSULATORS - PHENOLIC, THERMOPLASTIC & MYLAR  
TERMINALS & CABLE CLAMP - BRASS, TIN PLATED  
HANDLE - ZINC ALLOY, SEE TABLE FOR COLOR
- HANDLE AND INSULATOR TUBE SHIPPED UNASSEMBLED.
- THIS PRODUCT IS RoHS COMPLIANT.

**CUSTOMER DRAWING**

					THIS DRAWING DESCRIBES A DESIGN CONSIDERED PROPRIETARY IN NATURE, DEVELOPED AND MANUFACTURED BY SWITCHCRAFT INC. AND IS RELEASED ON A CONFIDENTIAL BASIS FOR IDENTIFICATION PURPOSES ONLY.				
					SIZE	WIDTH	MULT	LBS/M	TEMPER
					UNLESS OTHERWISE SPECIFIED			FINISH	
					1. ALL DIMENSIONS IN INCHES [mm]			MATERIAL	
					- TWO PLACE DECIMALS ±0.02 [0.5]			SPEC No.	
					- THREE PLACE DECIMALS ±0.005 [0.13]			FIRST USED ON	
								SCALE 1:1	
B	27065 REDRAWN	12-12-12	TO	TJK	DATE DRAWN	BY	CHKD	APVD	<b>Switchcraft®</b>
REV	ECO NUMBER	DATE	BY	APVD	11-Feb-97	MA	MA	MA	
REVISIONS					DO NOT SCALE DRAWING				
					NAME			PART No.	
					3 CONDUCTOR			482NC_483NC	
					LONGFRAME AUDIO PLUG, RoHS			REV	
								B	