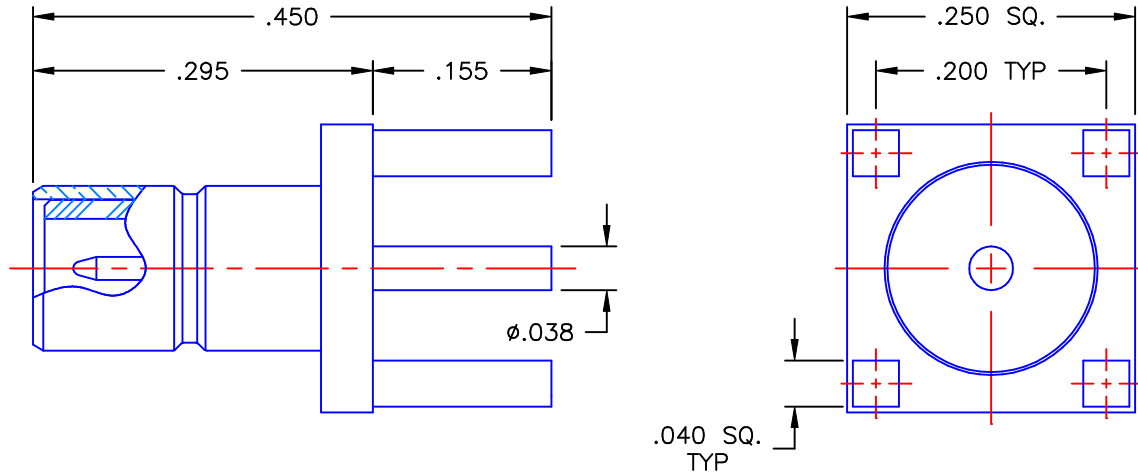


REVISIONS			
REV	DESCRIPTION	DATE	APPROVED
A	ECO #6996	01/29/08	A.D.M.



PROPRIETARY INFORMATION
 NOT TO BE RELEASED
 WITHOUT WRITTEN PERMISSION
 FROM AN AUTHORIZED
 REPRESENTATIVE OF
 APPLIED ENGINEERING PRODUCTS


NOTES:

MATERIALS:

1. BODY & CONTACT = BRASS PER ASTM B16, ALLOY C36000, TEMPER H02.
2. INSULATOR = VIRGIN WHITE TEFLON PER ASTM D1710, GRADE 1, TYPE I, CLASS "B".

FINISHES:

1. BODY = GOLD PLATE PER MIL-G-45204, TYPE II, CLASS 0, GRADE C, OVER .00010 TO .00020 COPPER STRIKE PER MIL-C-14550.
2. CONTACT = GOLD PLATE PER MIL-G-45204, TYPE II, CLASS 1, GRADE C, OVER .00010 TO .00020 STRESS FREE SULFAMATE NICKEL PER QQ-N-290.

UNLESS OTHERWISE SPECIFIED DIMENSIONS ARE IN INCHES TOLERANCES ON		DWN: A.D.M.	DATE 01/29/08	 APPLIED ENGINEERING PRODUCTS 104 John W. Murphy Dr. New Haven, CT 06513
		CHKD: D.N.	DATE 01/29/08	
DECIMAL	ANGLE	APVD: J.M.	DATE 01/29/08	
		SMB STRAIGHT MALE JACK P.C.B. MOUNT RECEPTACLE		
REFERENCE:		MATERIALS & FINISHES:		SIZE
ORIGINATOR: D.N. DATE: 10/20/97		SEE NOTES		A
				FSCM NO. 19505
				DWG. NO. 2009-1511-000
				REV A
				SCALE 6:1
				THIRD ANGLE PROJECTION
				SHEET 1 OF 1

2009-1511-000