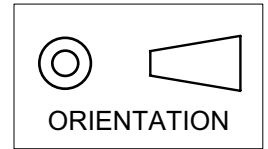


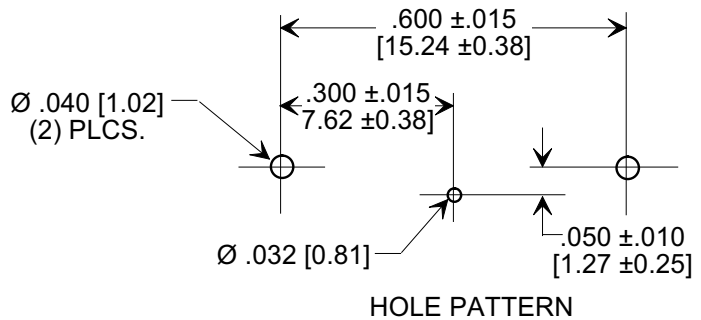
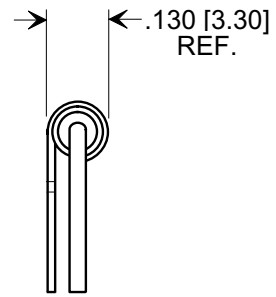
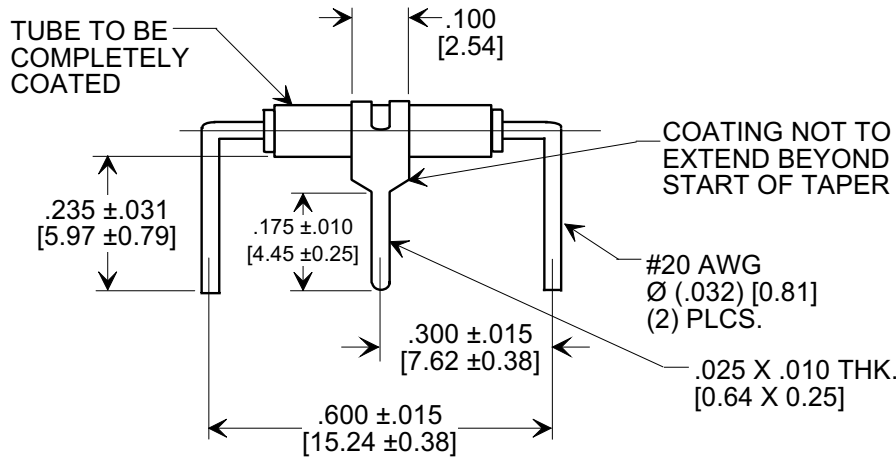
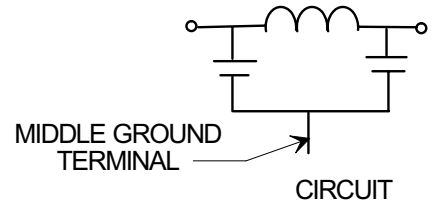
MARKETING SALES DRAWING

DIMENSIONS IN INCHES - DO NOT SCALE THIS DRAWING
DIMENSIONS IN METRIC - []

This drawing is the property of Tusonix, Inc., and may not be used, reproduced, published or disclosed to others without expressed authorization by Tusonix Inc.



Electrical Testing
per Tusonix standard
test plans and Mil-Std-202
Test Methods.



NOTES:

- TUSONIX STANDARD PART NUMBER: 4100-063.
 TUSONIX RoHS COMPLIANT PART NUMBER: 4100-063 LF.
 CUSTOMER MUST SPECIFY STANDARD OR RoHS PART NUMBER WHEN ORDERING.
- LEAD FINISH: SILVER PLATED.
- PART MARKING: STANDARD PART: NO MARKING. RoHS PART: GREEN INK DOT ON INSULATION BAND.

CAP. 1 KHz @ 25°C	WORKING VOLTAGE	I.R. MIN. @ 100 (VDC)	DWV (VDC)	DC CURRENT (AMPS)	MINIMUM NO LOAD INSERTION LOSS (dB) AT 25°C PER MIL-STD -220			
					10 MHz	100 MHz	400 MHz	1 GHz
1500 pF MIN.	380 VDC TO 85°C	10 G Ω	900	10A	3	35	56	65

X-2015 Rev-0 REVISION RECORD Original Release C.O. 940822-1 ADDED LEAD COATING NOTE & NO. WAS-062. S.M. 08-31-94 940830-2 ADDED NOTES, METRIC & DWV. S.M. 02-10-06 20060109-5-07	0	--TOLERANCES-- Unless Otherwise Specified	Title		
	1		P.C. BOARD MOUNT π TYPE LOW PASS FILTER		
	2	DECIMAL ±.031 [0.79]	Drawn	S.M. 08-17-94	Scale 3 X
	TUSONIX TUCSON, ARIZONA		Approved	BM 08-17-94	
		A	4100-063		