

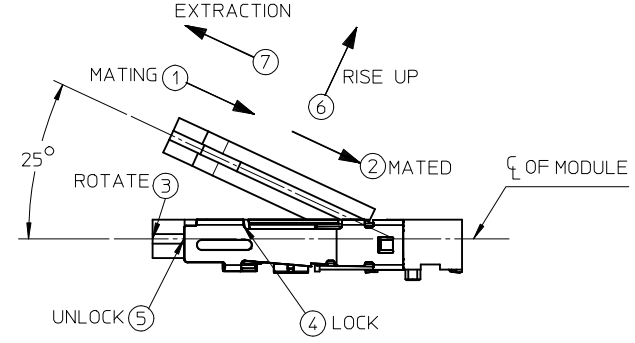
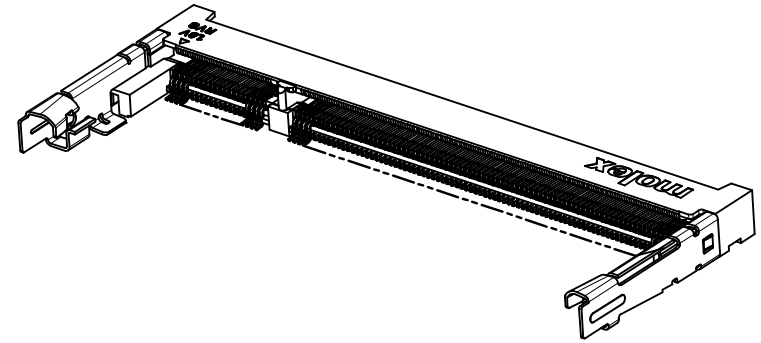
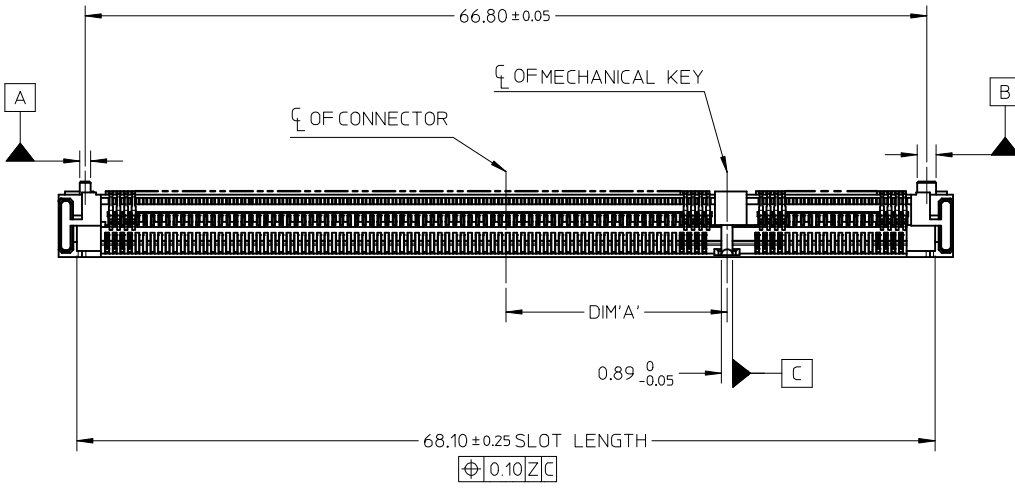
PART NO.	PACKAGING	TYPE	DIM'A'	DIM'B'	DIM'C'	VOLTAGE	CONTACT AREA FINISH
78309-1130	TRAY	DDR	18.45	1.80	1.50	2.5 V	30 MICROINCH / 0.76 MICROMETER GOLD OVER 50 MICROINCH / 1.27 MICROMETER NICKEL
78309-1730	TAPE & REEL						
78309-2230	TRAY	DDR2	17.55	2.70	2.40	1.8 V	30 MICROINCH / 0.76 MICROMETER GOLD OVER 50 MICROINCH / 1.27 MICROMETER NICKEL
78309-2730	TAPE & REEL						
78309-1115	TRAY	DDR	18.45	1.80	1.50	2.5 V	15 MICROINCH / 0.38 MICROMETER GOLD OVER 50 MICROINCH / 1.27 MICROMETER NICKEL
78309-1715	TAPE & REEL						
78309-2215	TRAY	DDR2	17.55	2.70	2.40	1.8 V	15 MICROINCH / 0.38 MICROMETER GOLD OVER 50 MICROINCH / 1.27 MICROMETER NICKEL
78309-2715	TAPE & REEL						

- NOTE :
- MATERIAL:  
HOUSING: LCP - UL94V-0, COLOUR: BLACK  
CONTACTS: COPPER ALLOY  
LOCK LEVER: STAINLESS STEEL
  - FINISH:  
CONTACT AREA: REFER TABLE IN SHEET 1.  
SOLDER TAIL AREA: 100MN/2.54MM TIN OVER 50MN/1.27MM NICKEL.  
LOCK LEVER SOLDER PAD: 100MN/2.54MM TIN OVER 50MN/1.27MM NICKEL.
  - PRODUCT SPEC AS PER PS-78309-001, PS-78309-002.
  - PART SHALL BE PACKED IN TRAY / TAPE & REEL.
  - RECOMMENDED MODULE LAYOUT SHALL BE AS PER JEDEC MO-224.
  - EDGE OF CONTACT PADS SHALL BE FREE OF BURRS AND EXTERNAL TIE BARS.
  - THE ADDITION OF THIS BEVEL IS A FABRICATION OPTION AND IS NOT REQUIRED. THE BEVEL AIDS THE INSERTION OF THE MODULE INTO THE CONNECTOR. THE BEVEL IS NOT TO HIT THE PLATED CONTACTS.
  - COPLANARITY INCLUDES HOLD DOWN 0.1 MAX.
  - BORDER OF COMPONENT AREA.
  - SUPPLY VOLTAGE TO BE INDICATED ON HOUSING. (SEE TABLE IN SHT 2)
  - MOLEX LOGO, DATE CODE & PART NO. TO BE INDICATED ON HOUSING.

THE DESIGN IS BASED ON DESIGN OBJECTIVES AND IS STRICTLY TENTATIVE.  
IT MAY CHANGE BASED ON RESULTS OF ADDITIONAL DESIGN REVIEWS & VERIFICATION.

<b>ADD 15AU PART No.</b> EC NO: S2009-0212 DRWN:VMANICKAM 2008/10/10 CHKD:CCTEH 2008/10/13 APPR:SHLENI 2008/10/13	QUALITY SYMBOLS ▽=0 ◻=0	GENERAL TOLERANCES (UNLESS SPECIFIED)		DIMENSION STYLE <b>MM ONLY</b>		SCALE NTS	DESIGN UNITS METRIC	THIRD ANGLE PROJECTION	
		4 PLACES ± --- ± --- 3 PLACES ± --- ± --- 2 PLACES ± 0.2 ± --- 1 PLACE ± --- ± ---	mm INCH ± --- ± --- ± 0.2 ± --- ± --- ± ---	DRAWN BY DWLEE01	DATE 2007/08/31	TITLE DDR/DDR2 SO DIMM 200 CKTS, 5.2MM HEIGHT REVERSE ORIENTATION			
		ANGULAR ± 1 °		CHECKED BY VMANICKAM	DATE 2007/12/06	MOLEX INCORPORATED			
		DRAFT WHERE APPLICABLE MUST REMAIN WITHIN DIMENSIONS		APPROVED BY SHLENI	DATE 2007/12/06	MATERIAL NO. SEE TABLE E	DOCUMENT NO. SD-78309-001	SHEET NO. 1 OF 6	

THIS DRAWING CONTAINS INFORMATION THAT IS PROPRIETARY TO MOLEX INCORPORATED AND SHOULD NOT BE USED WITHOUT WRITTEN PERMISSION



**MATE AND UNMATE GUIDE**

MATE: ① → ④

UNMATE: ⑤ → ⑦

**ADD 15AU PART No.**  
 EC NO: S2009-0212  
 DRWN: VMANICKAM 2008/10/10  
 CHKD: CTEH 2008/10/13  
 APPR: SHLENI 2008/10/13

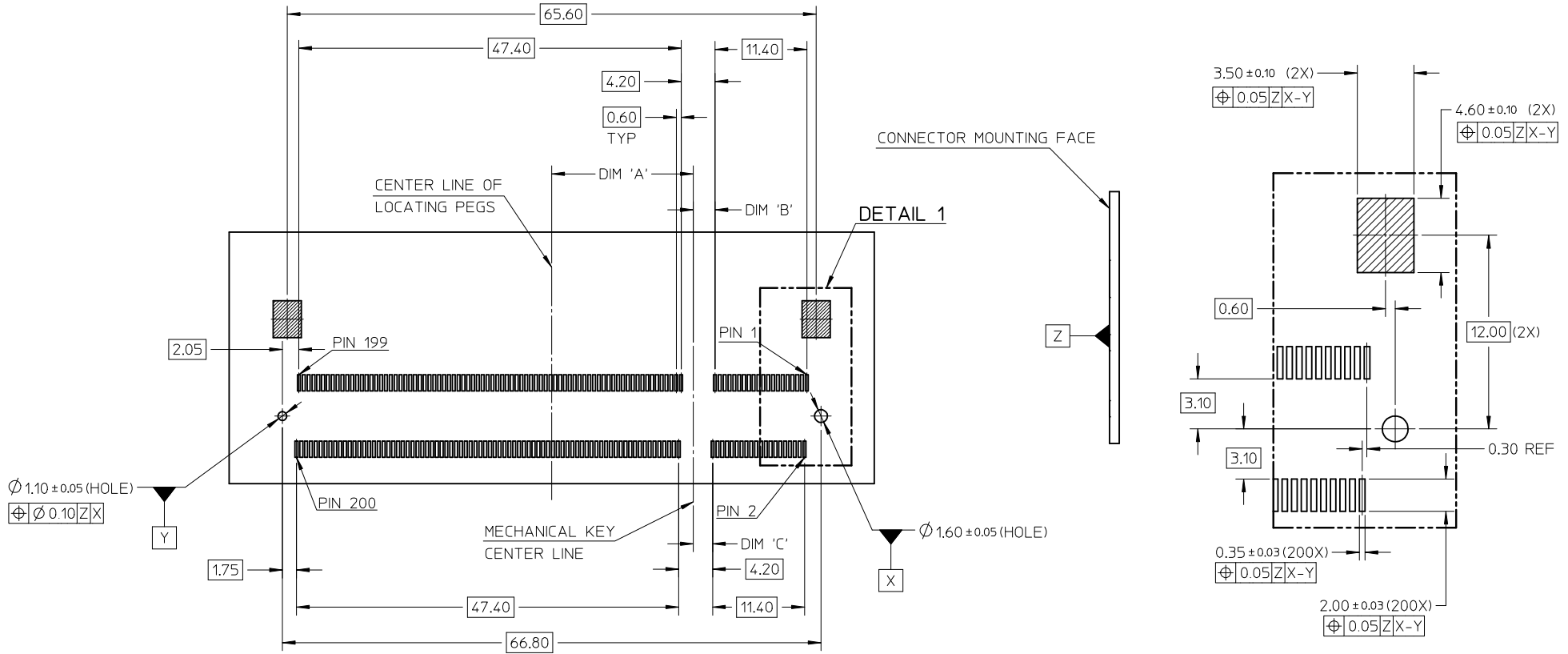
REV	DESCRIPTION
U	

QUALITY SYMBOLS	▽=0
	∇=0
	4 PLACES ± --- ± ---
	3 PLACES ± --- ± ---
	2 PLACES ± 0.2 ± ---
1 PLACE ± --- ± ---	
ANGULAR ± 1 °	
DRAFT WHERE APPLICABLE MUST REMAIN WITHIN DIMENSIONS	

GENERAL TOLERANCES (UNLESS SPECIFIED)		DIMENSION STYLE	
mm	INCH	MM ONLY	
± ---	± ---	DRAWN BY	DATE
± ---	± ---	DWLEE01	2007/08/31
± 0.2	± ---	CHECKED BY	DATE
± ---	± ---	VMANICKAM	2007/12/06
		APPROVED BY	DATE
		SHLENI	2007/12/06
		MATERIAL NO.	
		SEE TABLE	

SCALE	DESIGN UNITS	THIRD ANGLE PROJECTION
NTS	METRIC	
TITLE		
DDR/DDR2 SO DIMM		
200 CKTS, 5.2MM HEIGHT		
REVERSE ORIENTATION		
Molex MOLEX INCORPORATED		
MATERIAL NO.	DOCUMENT NO.	SHEET NO.
	SD-78309-001	2 OF 6
THIS DRAWING CONTAINS INFORMATION THAT IS PROPRIETARY TO MOLEX INCORPORATED AND SHOULD NOT BE USED WITHOUT WRITTEN PERMISSION		

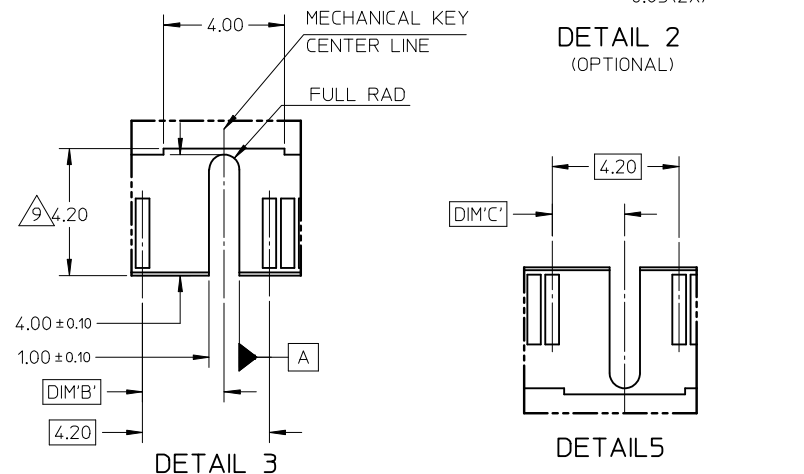
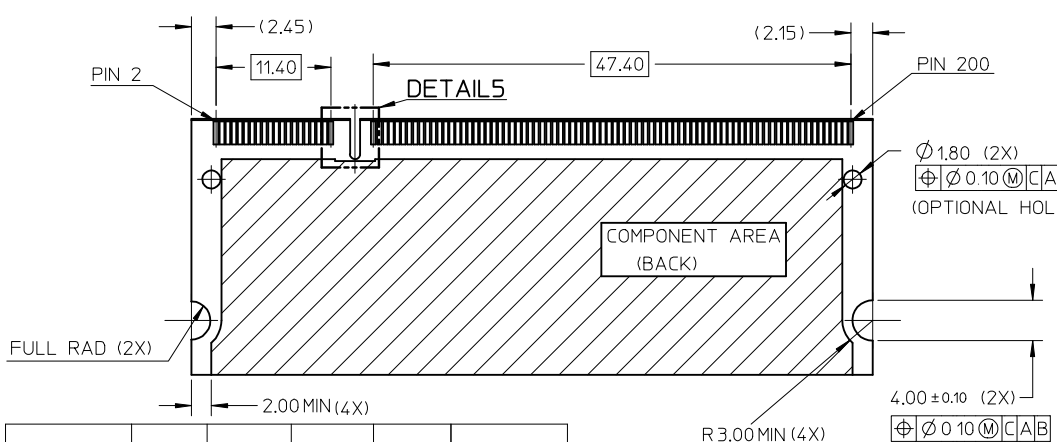
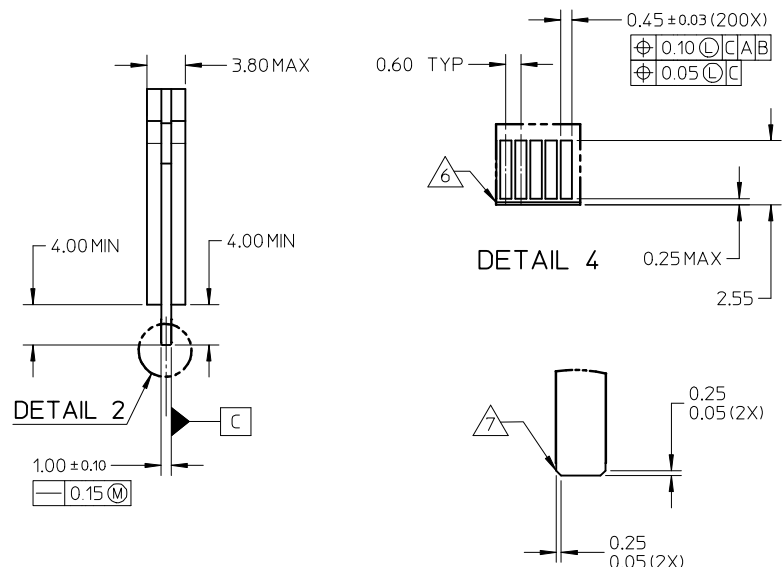
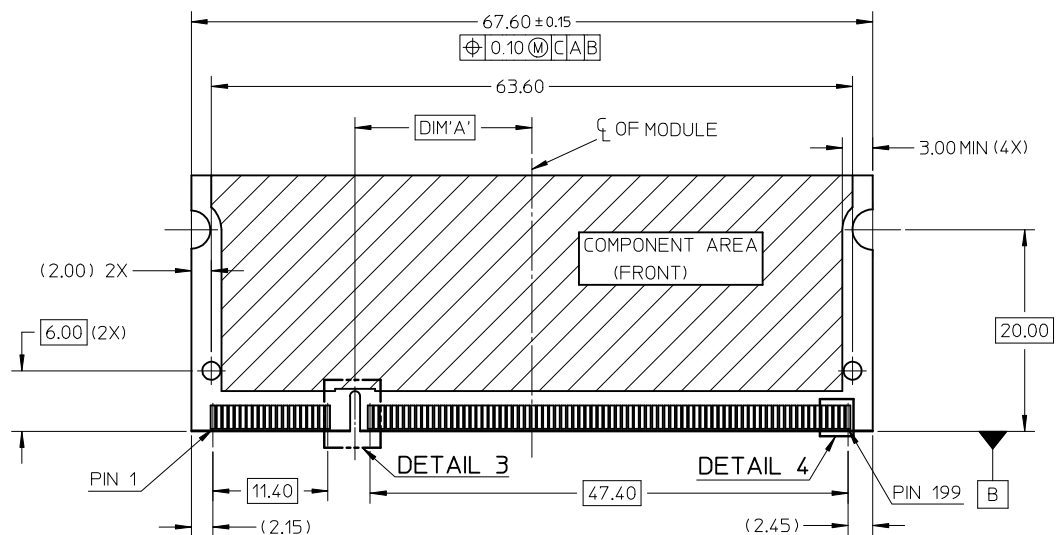
RECOMMENDED PCB LAYOUT FOR REVERSE ORIENTATION (TOP VIEW)



PART NO.	TYPE	DIM'A'	DIM'B'	DIM'C'	VOLTAGE
78309-1130	DDR	18.45	1.80	1.50	2.5 V
78309-1730					
78309-2230	DDR2	17.55	2.70	2.40	1.8 V
78309-2730					
78309-1115	DDR	18.45	1.80	1.50	2.5 V
78309-1715					
78309-2215	DDR2	17.55	2.70	2.40	1.8 V
78309-2715					

ADD 15AU PART No. EC NO: S2009-0212 DRWN:VMANICKAM 2008/10/10 CHKD:CCTEH 2008/10/13 APPR:SHLENI 2008/10/13	QUALITY SYMBOLS ▽=0 ◻=0	GENERAL TOLERANCES (UNLESS SPECIFIED) mm INCH 4 PLACES ± --- ± --- 3 PLACES ± --- ± --- 2 PLACES ± 0.2 ± --- 1 PLACE ± --- ± --- ANGULAR ± 1°	DIMENSION STYLE MM ONLY DRAWN BY DATE DWLEE01 2007/08/31 CHECKED BY DATE VMANICKAM 2007/12/06 APPROVED BY DATE SHLENI 2007/12/06	SCALE NTS TITLE DDR/DDR2 SO DIMM 200 CKTS, 5.2MM HEIGHT REVERSE ORIENTATION	DESIGN UNITS METRIC THIRD ANGLE PROJECTION	
	DRAFT WHERE APPLICABLE MUST REMAIN WITHIN DIMENSIONS		MATERIAL NO. SEE TABLE	DOCUMENT NO. SD-78309-001	SHEET NO. 3 OF 6	
	THIS DRAWING CONTAINS INFORMATION THAT IS PROPRIETARY TO MOLEX INCORPORATED AND SHOULD NOT BE USED WITHOUT WRITTEN PERMISSION					
	MOLEX INCORPORATED					

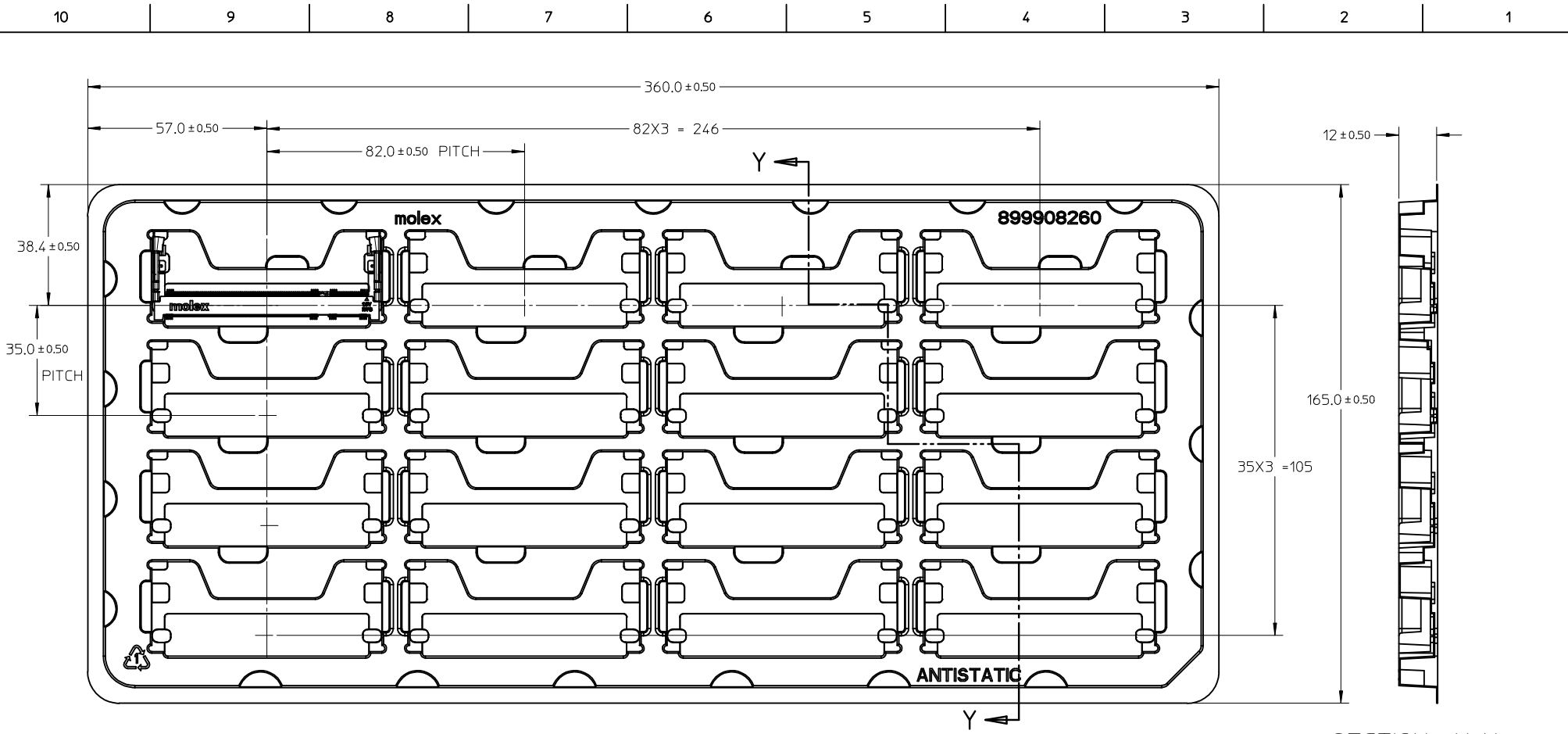
RECOMMENDED MATING PCB CONFIGURATION



PART NO.	TYPE	DIM'A'	DIM'B'	DIM'C'	VOLTAGE
78309-1130	DDR	18.45	1.80	1.50	2.5 V
78309-1730					
78309-2230	DDR2	17.55	2.70	2.40	1.8 V
78309-2730					
78309-1115	DDR	18.45	1.80	1.50	2.5 V
78309-1715					
78309-2215	DDR2	17.55	2.70	2.40	1.8 V
78309-2715					

ADD 15AU PART No. EC NO: S2009-0212 DRWN:VMANICKAM 2008/10/10 CHKD:CCTEH 2008/10/13 APPR:SHLENI 2008/10/13	QUALITY SYMBOLS	GENERAL TOLERANCES (UNLESS SPECIFIED)	DIMENSION STYLE	SCALE	DESIGN UNITS	THIRD ANGLE PROJECTION
	▽=0 ◻=0	mm INCH 4 PLACES ± --- ± --- 3 PLACES ± --- ± --- 2 PLACES ± 0.2 ± --- 1 PLACE ± --- ± --- ANGULAR ± 1°	MM ONLY	NTS	METRIC	
			DRAWN BY DATE DWLEE01 2007/08/31 CHECKED BY DATE VMANICKAM 2007/12/06 APPROVED BY DATE SHLENI 2007/12/06	TITLE	DDR/DDR2 SO DIMM 200 CKTS, 5.2MM HEIGHT REVERSE ORIENTATION	
		DRAFT WHERE APPLICABLE MUST REMAIN WITHIN DIMENSIONS	MATERIAL NO. SEE TABLE E SIZE A3	DOCUMENT NO. SD-78309-001	MOLEX INCORPORATED SHEET NO. 4 OF 6	

THIS DRAWING CONTAINS INFORMATION THAT IS PROPRIETARY TO MOLEX INCORPORATED AND SHOULD NOT BE USED WITHOUT WRITTEN PERMISSION

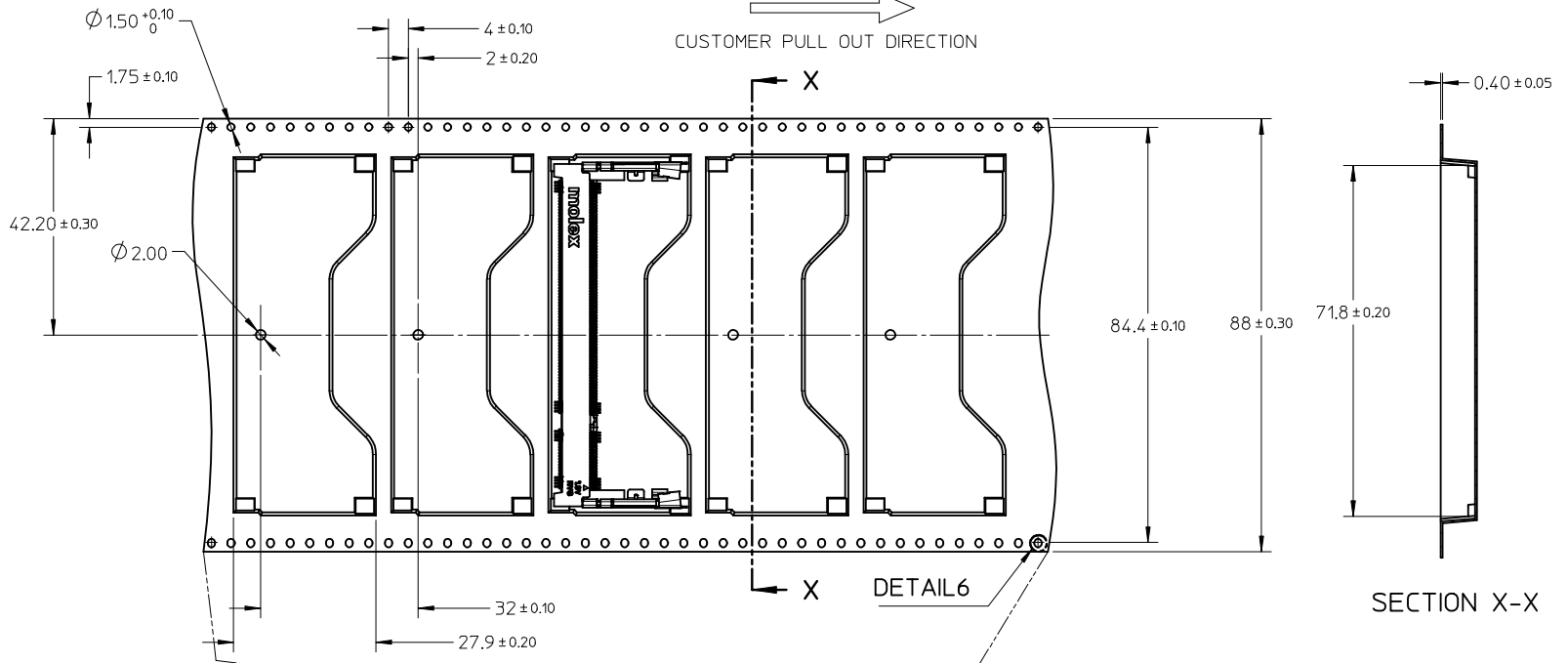


SECTION Y-Y

NOTE:

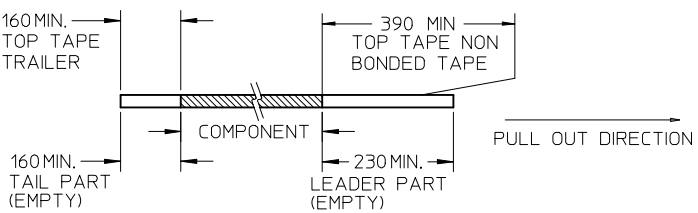
1. NO. OF CAVITY: 4 X 4 = 16

ADD 15AU PART No. EC NO: S2009-0212 DRWN:VMANICKAM 2008/10/10 CHKD:CCTEH 2008/10/13 APPR:SHLENI 2008/10/13	DESCRIPTION REV	QUALITY SYMBOLS	GENERAL TOLERANCES (UNLESS SPECIFIED)		DIMENSION STYLE MM ONLY		SCALE NTS	DESIGN UNITS METRIC	THIRD ANGLE PROJECTION		
		$\nabla = 0$ $\square = 0$	mm	INCH	DRAWN BY DWLEE01	DATE 2007/08/31	TITLE DDR/DDR2 SO DIMM 200 CKTS, 5.2MM HEIGHT REVERSE ORIENTATION				
		4 PLACES	± ---	± ---	CHECKED BY VMANICKAM	DATE 2007/12/06	MOLEX INCORPORATED				
		3 PLACES	± ---	± ---	APPROVED BY SHLENI	DATE 2007/12/06	MATERIAL NO.	DOCUMENT NO.	SHEET NO.		
DRAFT WHERE APPLICABLE MUST REMAIN WITHIN DIMENSIONS		ANGULAR ± 1 °		SEE TABLE		SD-78309-001		5 OF 6			
				SIZE A3		THIS DRAWING CONTAINS INFORMATION THAT IS PROPRIETARY TO MOLEX INCORPORATED AND SHOULD NOT BE USED WITHOUT WRITTEN PERMISSION					

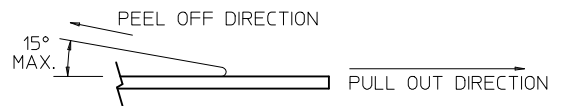


NOTES:

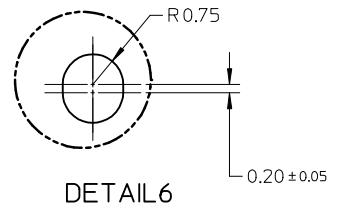
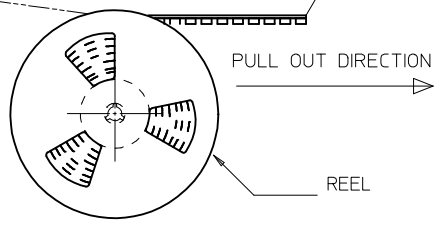
1. LEADER AND TRAILER TAPE



2. PEELING OFF FORCE OF THE TOP TAPE: 20 - 80gf. (PEELING DIRECTION AS SHOWN IN FOLLOWING FIGURE)



- 3. TAPE AND REEL SPECIFICATION IS AS PER EIA-481.
- 4. TAPE AND REEL QUANTITY : 200 PCS/ REEL.
- 5. THE TAPE IS TREATED FOR ANTI-STATIC.



ADD 15AU PART No. EC NO: S2009-0212 DRWN:VMANICKAM 2008/10/10 CHKD:CCTEH 2008/10/13 APPR:SHLENI 2008/10/13	QUALITY SYMBOLS	GENERAL TOLERANCES (UNLESS SPECIFIED)	DIMENSION STYLE	SCALE	DESIGN UNITS	THIRD ANGLE PROJECTION															
	$\nabla=0$ $\nabla=0$	<table border="1"> <tr> <th></th> <th>mm</th> <th>INCH</th> </tr> <tr> <td>4 PLACES</td> <td>± ---</td> <td>± ---</td> </tr> <tr> <td>3 PLACES</td> <td>± ---</td> <td>± ---</td> </tr> <tr> <td>2 PLACES</td> <td>± 0.2</td> <td>± ---</td> </tr> <tr> <td>1 PLACE</td> <td>± ---</td> <td>± ---</td> </tr> </table>		mm	INCH	4 PLACES	± ---	± ---	3 PLACES	± ---	± ---	2 PLACES	± 0.2	± ---	1 PLACE	± ---	± ---	MM ONLY	NTS	METRIC	
		mm	INCH																		
	4 PLACES	± ---	± ---																		
3 PLACES	± ---	± ---																			
2 PLACES	± 0.2	± ---																			
1 PLACE	± ---	± ---																			
<table border="1"> <tr> <td>DRAWN BY</td> <td>DATE</td> <td>TITLE</td> </tr> <tr> <td>DWLEE01</td> <td>2007/08/31</td> <td rowspan="3">           DDR/DDR2 SO DIMM            200 CKTS, 5.2MM HEIGHT            REVERSE ORIENTATION            MOLEX INCORPORATED         </td> </tr> <tr> <td>CHECKED BY</td> <td>DATE</td> </tr> <tr> <td>APPROVED BY</td> <td>DATE</td> </tr> <tr> <td>SHLENI</td> <td>2007/12/06</td> <td> </td> </tr> </table>	DRAWN BY	DATE	TITLE	DWLEE01	2007/08/31	DDR/DDR2 SO DIMM 200 CKTS, 5.2MM HEIGHT REVERSE ORIENTATION MOLEX INCORPORATED	CHECKED BY	DATE	APPROVED BY	DATE	SHLENI	2007/12/06		<table border="1"> <tr> <td>MATERIAL NO.</td> <td>DOCUMENT NO.</td> <td>SHEET NO.</td> </tr> <tr> <td>SEE TABLE</td> <td>SD-78309-001</td> <td>6 OF 6</td> </tr> </table>	MATERIAL NO.	DOCUMENT NO.	SHEET NO.	SEE TABLE	SD-78309-001	6 OF 6	
DRAWN BY	DATE	TITLE																			
DWLEE01	2007/08/31	DDR/DDR2 SO DIMM 200 CKTS, 5.2MM HEIGHT REVERSE ORIENTATION MOLEX INCORPORATED																			
CHECKED BY	DATE																				
APPROVED BY	DATE																				
SHLENI	2007/12/06																				
MATERIAL NO.	DOCUMENT NO.	SHEET NO.																			
SEE TABLE	SD-78309-001	6 OF 6																			
<table border="1"> <tr> <td>SIZE</td> <td colspan="2">THIS DRAWING CONTAINS INFORMATION THAT IS PROPRIETARY TO MOLEX INCORPORATED AND SHOULD NOT BE USED WITHOUT WRITTEN PERMISSION</td> </tr> <tr> <td>A3</td> <td colspan="2"></td> </tr> </table>	SIZE	THIS DRAWING CONTAINS INFORMATION THAT IS PROPRIETARY TO MOLEX INCORPORATED AND SHOULD NOT BE USED WITHOUT WRITTEN PERMISSION		A3																	
SIZE	THIS DRAWING CONTAINS INFORMATION THAT IS PROPRIETARY TO MOLEX INCORPORATED AND SHOULD NOT BE USED WITHOUT WRITTEN PERMISSION																				
A3																					