

4

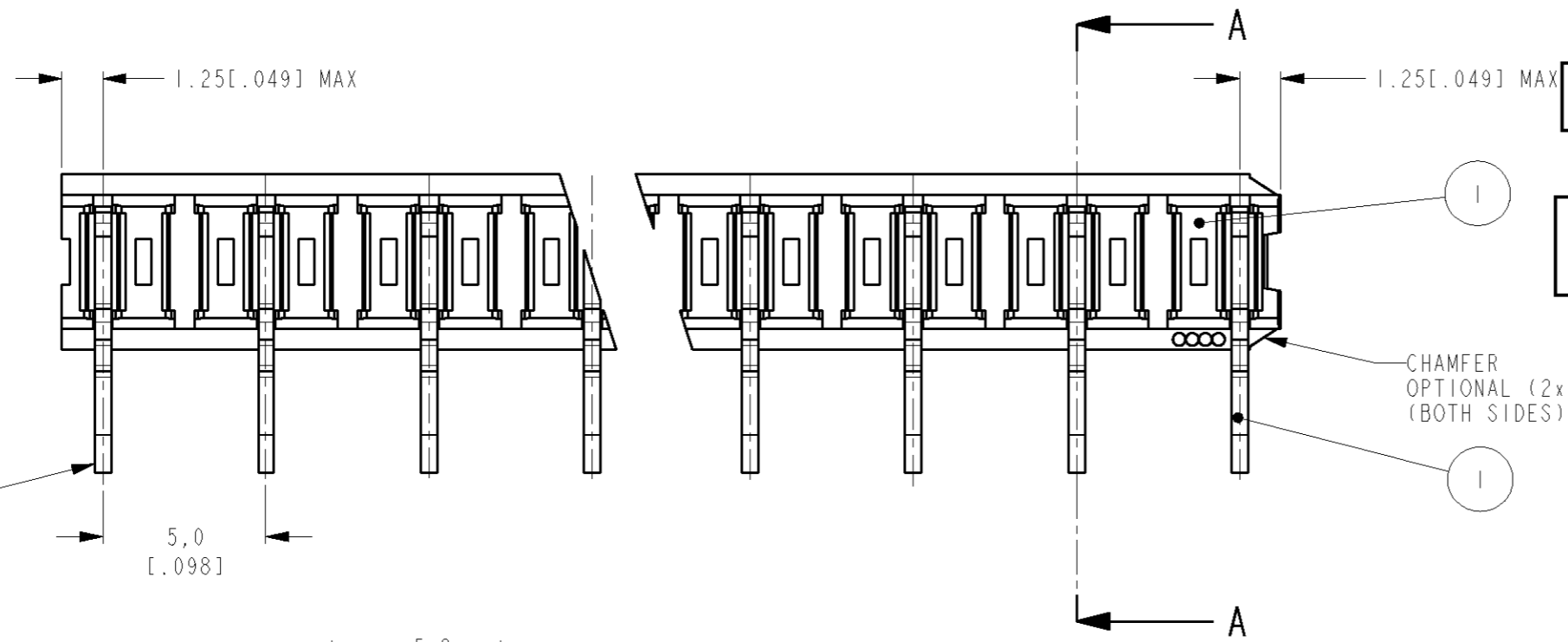
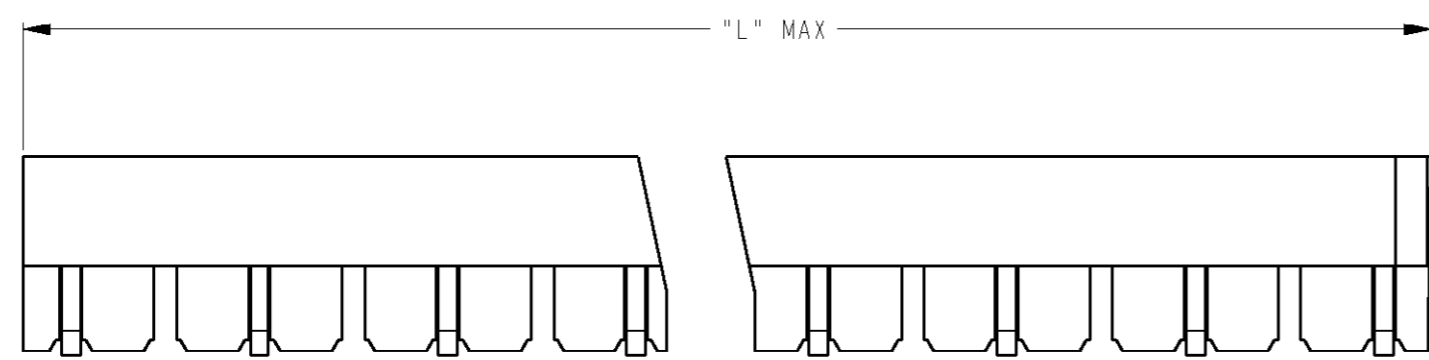
3

2

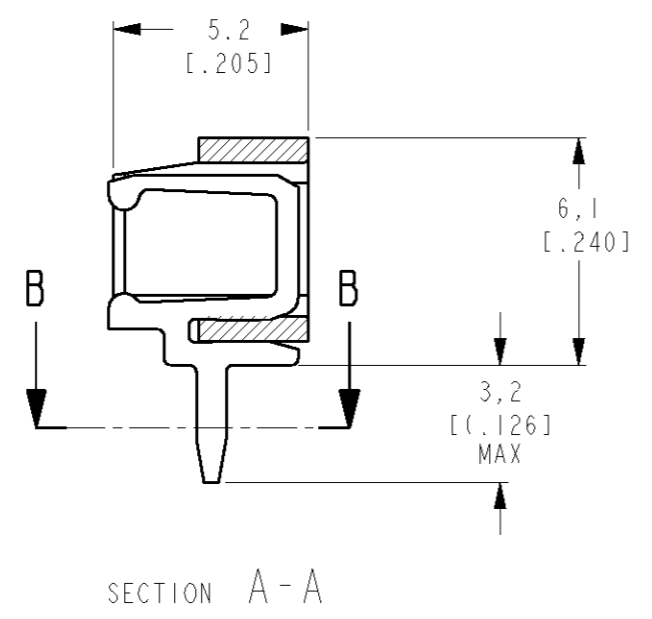
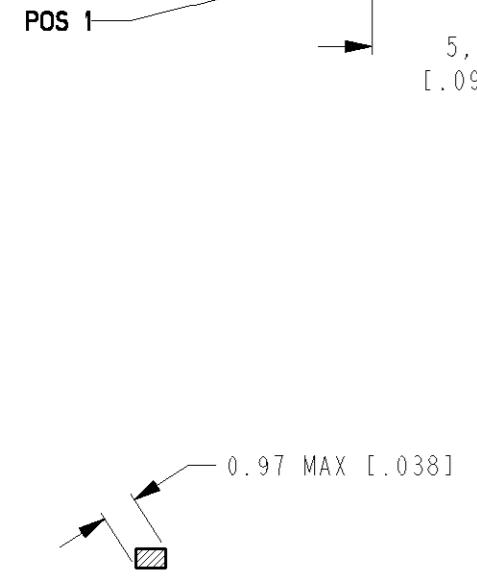
1

THIS DRAWING IS UNPUBLISHED. RELEASED FOR PUBLICATION
 © COPYRIGHT - BY TYCO ELECTRONICS CORPORATION. ALL RIGHTS RESERVED.

LOC	DIST	REVISIONS					
H	-	P	LTR	DESCRIPTION	DATE	DWN	APVD
			A	ECN EH10 0344 05	31marc2005	MG	MG
			A1	REVISED PER ECO-09-026945	28NOV09	KK	AEG



	ORDER NUMBER	NUMBER OF POSITIONS	L MAX.	
			M.M.	INCHES
OBSOLETE	5164854	2	7,5	.296
	5164854	3	12,5	.492
	5164854	4	17,5	.690
	5164854	5	22,5	.886
	5164854	6	27,5	1.083
OBSOLETE	5164854	7	32,5	1.280
	5164854	8	37,5	1.477
	5164854	9	42,5	1.674
OBSOLETE	5164854	10	47,5	1.871
	1- 5164854	11	52,5	2.067
	1- 5164854	12	57,5	2.264
	1- 5164854	13	62,5	2.461
	1- 5164854	14	67,5	2.658
	1- 5164854	15	72,5	2.855



1 OBSOLETE PARTS: OBSOLETE CIS STREAMLINING PER D.RENAUD/D.SINISI

ITEM NO.	DESCRIPTION	MATERIAL	FINISH	QUANTITY
2	CONTACT	BRASS	TIN OVER NICKEL	SEE TABLE
1	HOUSING	PBT, 20% GF	GREEN	1

THIS DRAWING IS A CONTROLLED DOCUMENT FOR TYCO ELECTRONICS CORPORATION. IT IS SUBJECT TO CHANGE AND THE CONTROLLING ENGINEERING ORGANIZATION SHOULD BE CONTACTED FOR THE LATEST REVISION.

DIMENSIONS:	TOLERANCES UNLESS OTHERWISE SPECIFIED:	DWN	31 mar 05	tyco Electronics	TYCO ELECTRONICS NEDERLAND B.V. 's-HERTOGENBOSCH, THE NETHERLANDS
mm	0 PLC ± 1 PLC ± 2 PLC ± 3 PLC ± 4 PLC ± ANGLES ±	CHK	31 mar 05		
MATERIAL		APVD	-	NAME	
FINISH		PRODUCT SPEC	108-19027	2-15 POS FEMALE BOARD TO BOARD CONNECTOR ASSEMBLY FOR MINI-MATCH INTERCONNECTION SYSTEM, PITCH 5,0 MM	
		APPLICATION SPEC	-	SIZE	RESTRICTED TO
		WEIGHT	-	A3	
		CUSTOMER DRAWING		CAGE CODE	
				DRAWING NO	
				5164854	
		SCALE	5:1	SHEET	OF
				REV	A1