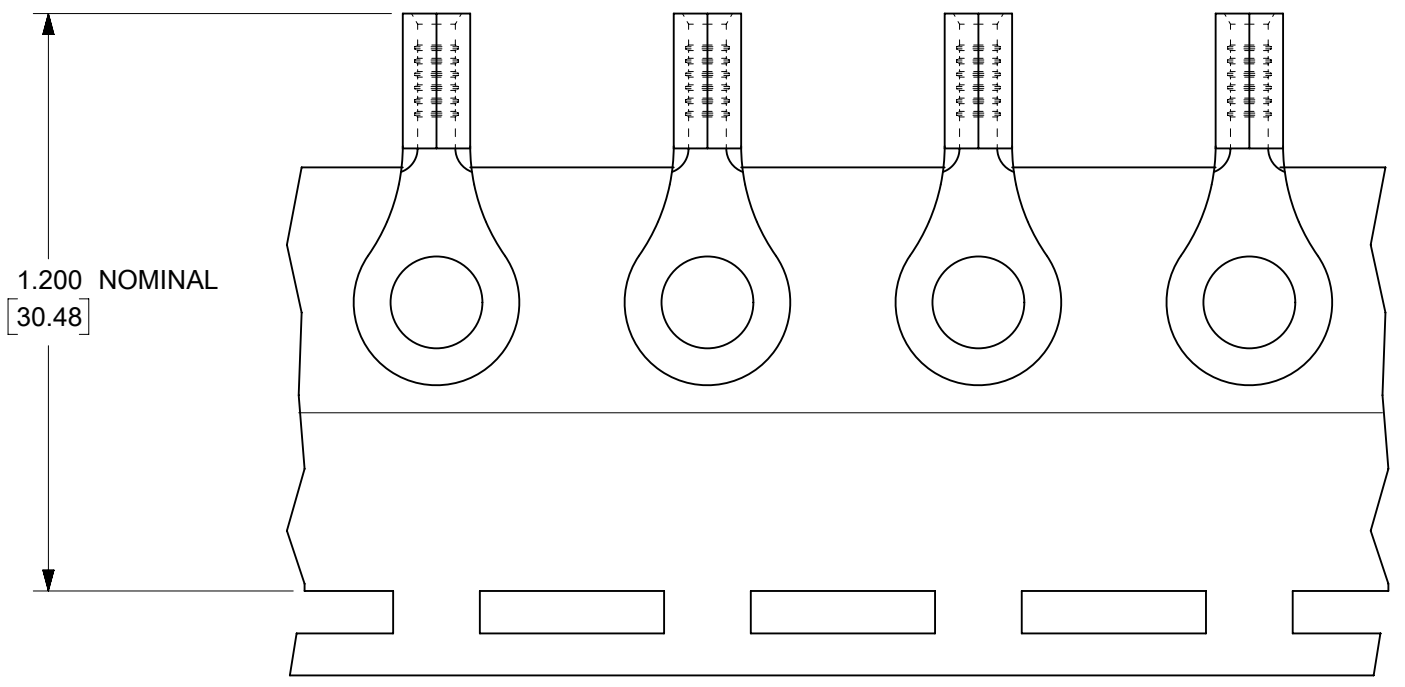
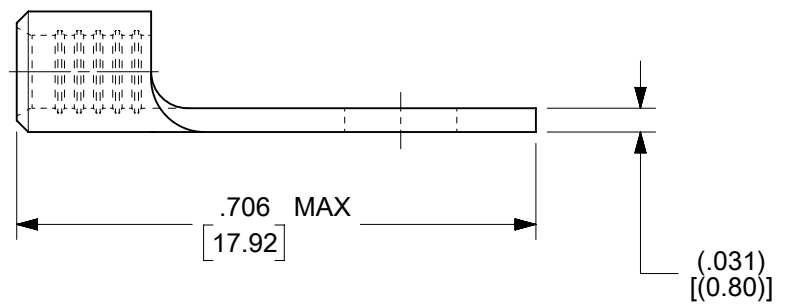
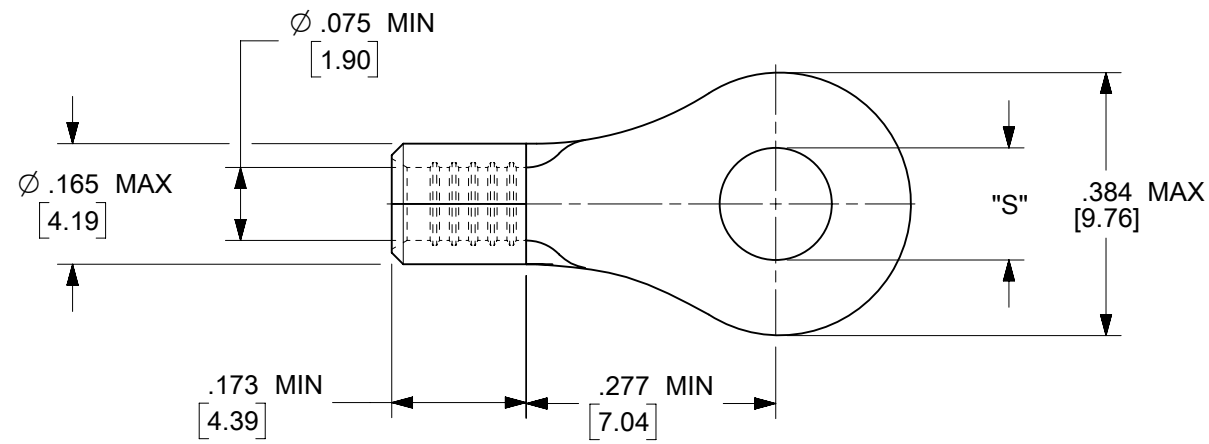


| MATERIAL NO. | ENG. NO. | STUD SIZE | "S" MAX | DESCRIPTION |
|--------------|-------------|-----------|-----------|-------------|
| 192030388 | 19203-0388 | 10 | .212/5.38 | LOOSE |
| 192030052 | B-S-137-10T | 10 | .212/5.38 | TAPE |

(E1)



PARTS ON TAPE

- NOTES:
1. MATERIAL: STEEL
 2. WIRE SIZE: 16-14 AWG (1.5-2.5 MM²)
 3. FINISH: NICKEL PLATED WITH OPTIONAL COPPER FLASH UNDERPLATING, IS ALLOWED FOR IMPROVED ADHESION.
 4. PART IS ROHS COMPLIANT.
 5. AMBIENT OPERATING TEMPERATURE UP TO 900 °F (483 °C).

(E1)

| THIS DRAWING CONTAINS INFORMATION THAT IS PROPRIETARY TO MOLEX ELECTRONIC TECHNOLOGIES, LLC AND SHOULD NOT BE USED WITHOUT WRITTEN PERMISSION | | | | | | | | | | |
|---|---|---|-------|-------------------|--|------------|--|---------------------------------------|--|-------|
| FUNCTIONAL SYMBOLS | THIS DRAWING CONTAINS INFORMATION THAT IS PROPRIETARY TO MOLEX ELECTRONIC TECHNOLOGIES, LLC AND SHOULD NOT BE USED WITHOUT WRITTEN PERMISSION | CURRENT REV DESC: REMASTERED IN ECTR AND UPDATED NOTE | | | | | | | | |
| | <table border="1"> <tr> <th>DIMENSION UNITS</th> <th>SCALE</th> </tr> <tr> <td>IN/MM</td> <td>4:1</td> </tr> </table> | DIMENSION UNITS | SCALE | | | | | | | IN/MM |
| DIMENSION UNITS | SCALE | | | | | | | | | |
| IN/MM | 4:1 | | | | | | | | | |
| DIVISIONAL SYMBOLS | 4 PLACES ± | ± | ± | DRWN: PAWANC | | 2022/05/10 | | PRODUCT CUSTOMER DRAWING | | |
| | 3 PLACES ± | ± | ± | CHKD: DMYRICK | | 2022/06/01 | | DOCUMENT NUMBER | | |
| | 2 PLACES ± | ± | ± | APPR: JMACNEIL | | 2022/06/02 | | SD-19203-017 | | |
| | 1 PLACE ± | ± | ± | INITIAL REVISION: | | 2005/04/06 | | DOC TYPE DOC PART REVISION | | |
| 0 PLACES ± | | ± | ± | DRWN: DMYRICK | | 2005/04/06 | | PSD 001 E1 | | |
| ANGULAR TOL ± ° | | ± | ° | APPR: RDEROSS | | 2005/04/06 | | MATERIAL NUMBER CUSTOMER SHEET NUMBER | | |
| DRAFT WHERE APPLICABLE MUST REMAIN WITHIN DIMENSIONS | | THIRD ANGLE PROJECTION | | DRAWING | | SERIES | | SEE CHART GENERAL MARKET 1 OF 1 | | |