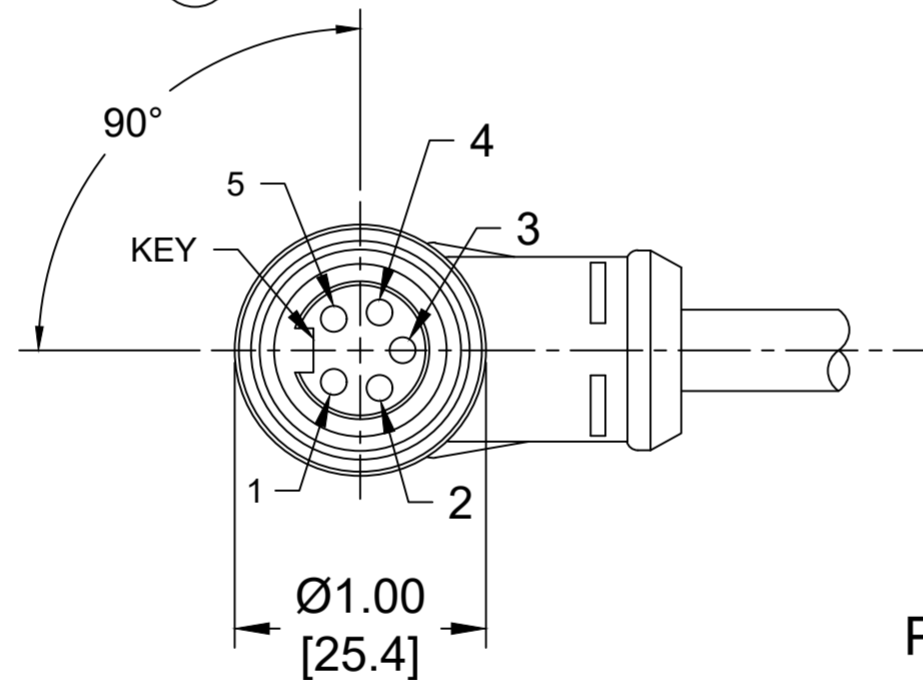
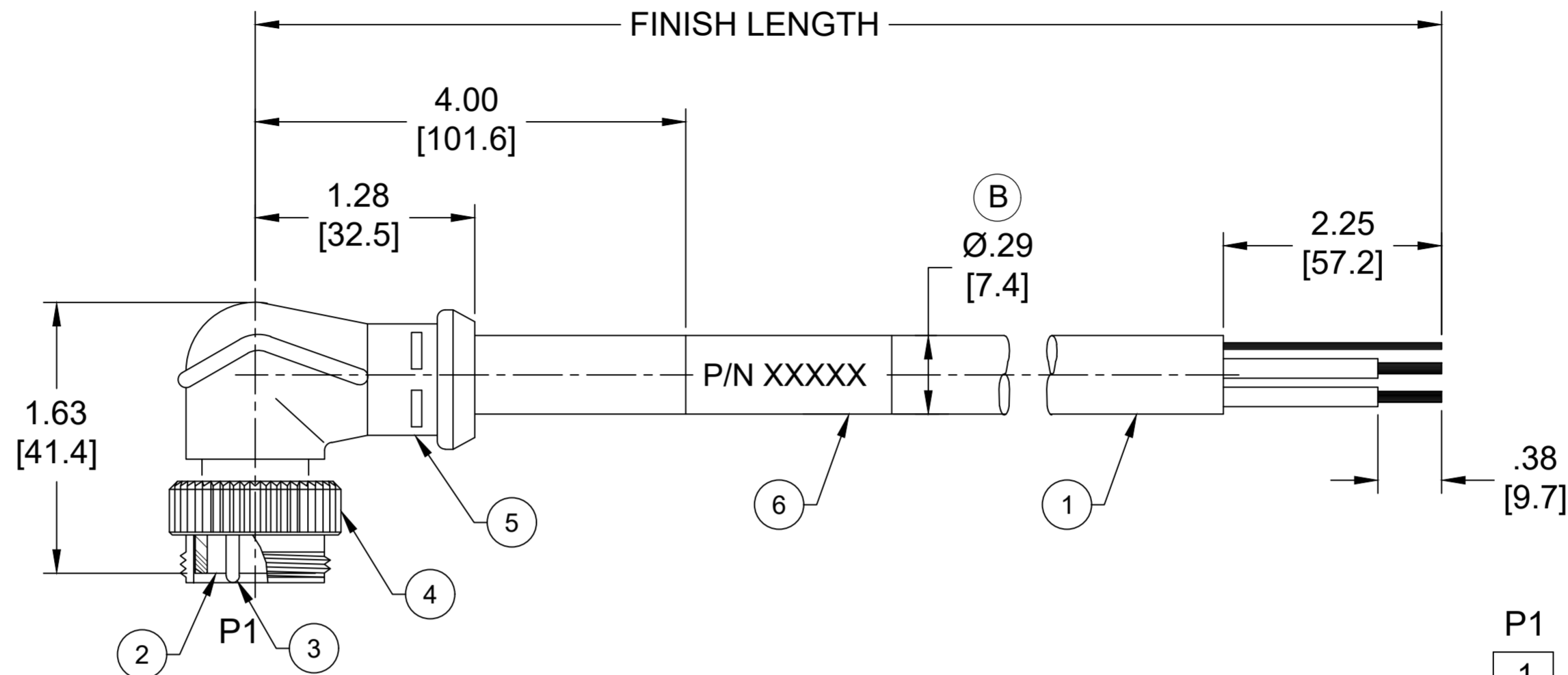


PART NO.	ENGINEERING NO.	FINISHED LENGTH
1300240207	DND09A-M010	1M [ 3FT 3 IN ]
1300240003	DND09A-M030	3M [9FT 10 IN]
1300240210	DND09A-M060	6M [19FT 8 IN]



P1	
1	DRAIN
2	RED
3	BLACK
4	WHITE
5	BLUE

WIRING DIAGRAM

NOTES:

1. MATERIAL: AS NOTED
2. FINISH: AS NOTED
3. ELECTRICAL:  
VOLTAGE RATING PER IEC 60664: 300V  
VOLTAGE RATING PER UL: 300V  
CURRENT: 4A
4. TEMP RATING: -20° TO +80°C
5. PROTECTION: IP67 (WHEN MATED)
6. COUPLING THREAD: 7/8"-16UN
7. UL RECOGNIZED FILE: E152210  
CSA CERTIFIED FILE: LR6837
8. ALL DIMENSIONS ARE FOR REFERENCE UNLESS TOLERANCED OR NOTED OTHERWISE

PART NUMBER LEGEND

DND09A-M010

CABLE LENGTH  
M005= 0.5 METER  
M010= 1 METER  
M100= 10 METER

CABLE LENGTH TOLERANCES
<.3M [1FT]: +19mm-0 [ +.75in-0]
.3 - .9M [1 - 3FT]: +44.5mm-0 [+1.75in-0]
.9 - 1.8M [3 - 6FT]: +55.6mm-0 [+2.19in-0]
1.8 - 3.7M [6 - 12FT]: +88.9mm-0 [+3.50in-0]
3.7 - 7.3M [12 - 24FT]: +165.1mm-0 [+6.50in-0]
7.3-14.6M [24 - 48FT]: +317.5mm-0 [+12.50in-0]
14.6 - 30.5M [48-100FT]: +622.3mm-0 [+24.50in-0]
OVER 30M [100FT] +2% OF FINISHED LENGTH

ITEM	COMPONENT	MATERIAL	FINISH
6	WRAP LABEL	VINYL	BLACK/YELLOW
5	OVERMOLD	TPE	GRAY
4	COUPLING NUT	ZINC DIE CAST	BLACK-E-COAT
3	CONTACT PIN	COPPER ALLOY	GOLD OVER NICKEL
2	INSERT	TPE	BLACK
1	CABLE 22 AWG, DEVICENET	PVC	GRAY

FUNCTIONAL SYMBOLS	THIS DRAWING CONTAINS INFORMATION THAT IS PROPRIETARY TO MOLEX ELECTRONIC TECHNOLOGIES, LLC AND SHOULD NOT BE USED WITHOUT WRITTEN PERMISSION										
	DIMENSION UNITS	SCALE	CURRENT REV DESC: ITEM #2 & #5 WERE PVC. ADDED CABLE DIA & TOL CHART. MODIFIED PN CHART								
DIVISIONAL SYMBOLS	INCH/MM	NTS	EC NO: 720800								
	GENERAL TOLERANCES (UNLESS SPECIFIED)		DRWN: ABENJAMINLW 2022/06/23								
DIVISIONAL SYMBOLS	4 PLACES	±----	±----	CHK'D: RSTONE 2022/09/09							
	3 PLACES	±----	±----	APPR: BWOODMAN 2022/09/09							
	2 PLACES	±----	±----	INITIAL REVISION:							
	1 PLACE	±----	±----	DRWN: EBRACKEN 2013/06/18							
DIVISIONAL SYMBOLS	0 PLACES	±----	±----	APPR: BWOODMAN 2013/10/07							
	ANGULAR TOL	±	----	THIRD ANGLE PROJECTION							
DRAFT WHERE APPLICABLE MUST REMAIN WITHIN DIMENSIONS		DRAWING		SERIES		MATERIAL NUMBER		CUSTOMER		SHEET NUMBER	
		C-SIZE		130024		SEE CHART		GENERAL MARKET		1 OF 1	

**molex**

MINI-CHANGE DEVICENET, A SIZE  
5 POLE, MALE, 90DEG, SINGLE KEY,  
#22/4 AWG

PRODUCT CUSTOMER DRAWING

DOCUMENT NUMBER: SD-130024-017  
DOC TYPE/DOC PART/REVISION: PSD 001 B