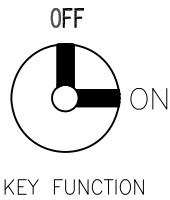
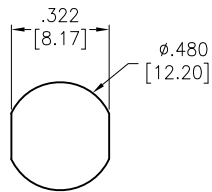
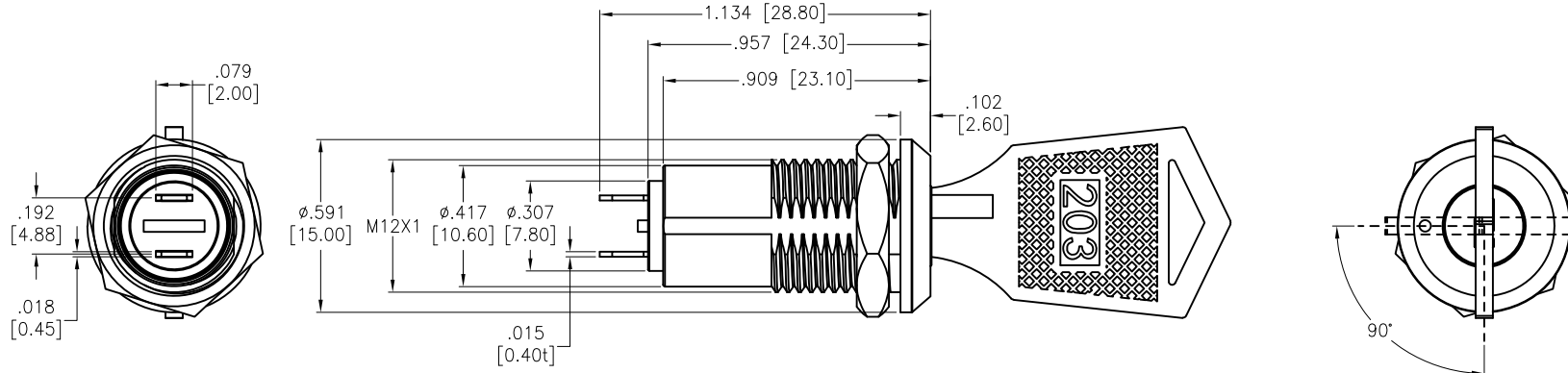


APPROVED: \_\_\_\_\_  
 DATE: \_\_\_\_\_ TITLE: \_\_\_\_\_

Rev	AWO #	Description	Date	Appr
-		RELEASED	10/15/20	
A		UPDATE DRAWING	5/12/21	JJ/RC
B		UPDATE DIM.	6/9/21	JJ/RC
C		ADDED SPEC.	8/31/21	WX/RC
D		UPDATE SPEC.	5/27/22	WX/MC



FUNCTION
SPST, ON-OFF

ADAM-P/N	SPEC.
SW-R-K4-A	Key pulled on both positions. Note: this would be our standard
SW-R-K4-B	Key pulled on 1 position

SPECIFICATIONS:

Material:  
 Body: Steel, Polished Chrome, Silver plated

Electrical:  
 The rated load: 250 VAC, 0.5A  
 24 VDC, 0.5A

Contact resistance: 35 mΩ max

Insulation resistance: 1000 mΩ min (500VDC)

Dielectric withstanding voltage: 1500 VAC for 1 minute

Endurance: ≥ 10000 Cycles

Temperature Rating:

Operating temperature: -25°C to +85°C

Environmental:

Lead free, RoHS compliant



UNLESS OTHERWISE SPECIFIED ALL DIMENSIONS ARE INCHES [MM]. TOLERANCES: EXCEPT AS NOTED

INCHES	HOLES
.x ± .10	∅x ± .10
.xx ± .020	∅xx ± .015
.xxx ± .015	∅xxx ± .010



909 Rahway Avenue,  
 Union, NJ 07083  
 Phone: 908-687-5000  
 Fax: 908-687-5710

DRAWN	OW	10/15/20
CHECKED	AC	10/15/20
APPROVED		

TITLE SWITCH, KEY LOCK, 12MM, SPST, ON-OFF  
 PANEL MOUNT, SOLDER TERMINAL

THIS DRAWING CONTAINS INFORMATION THAT IS PROPRIETARY AND SHOULD NOT BE USED WITHOUT PRIOR WRITTEN PERMISSION FROM ADAM TECH

SIZE X	PART NO. SW-R-K4-X	REV. D
REF: S00206C	SCALE: NTS	SHEET 1 OF 1