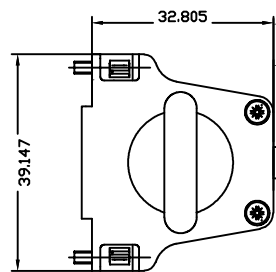


C.1

HD D-sub 44P male connector

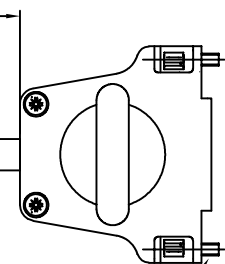


CWK/YR-XXXXX-X-XX
33 56 212 XXX 00XX

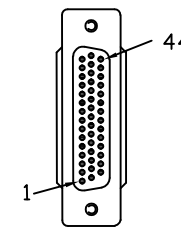
LABEL

24P×26AWG double shield HF cable

L



#4-40 UNC screw



C.2

HD D-sub 44P male connector

WIRING TABLE

PAIR No.	C.1	C.2
1	1	1
	6	6
2	2	2
	3	3
3	4	4
	5	5
4	7	7
	8	8
5	9	9
	12	12
6	10	10
	11	11
7	13	13
	14	14
8	15	15
	30	30
9	16	16
	21	21
10	17	17
	18	18
11	19	19
	20	20
12	22	22
	23	23
13	24	24
	31	31

PAIR No.	C.1	C.2
14	25	25
	26	26
15	27	27
	42	42
16	28	28
	29	29
17	32	32
	33	33
18	34	34
	35	35
19	36	36
	39	39
20	37	37
	38	38
21	40	40
	41	41
22	43	43
	44	44
23	NC	NC
	NC	NC
24	NC	NC
	NC	NC
	shell	shell

NOTES:

- 1.) CABLE MUST BE PERFORMED CONTINUITY TEST AND HI-POT TEST.
- 2.) WHITE LABEL CONTENT:

DATE CODE & LOT INFORMATION
HARTING P/N

- 3.) THE CABLE SHOULD BE PACKED BY THE PLASTIC BAG AND STICK THE LABEL WITH P/N CONTENT ON IT, THEN PUT IT INTO THE CARTON (THE QTY ACCORDING TO ACTUAL CONDITION)
- 4.) EXPORT CARTON SHOULD BE STICKED THE LABEL WITH P/N AND QTY CONTENT.

33 56 212 200 0036	20 m
33 56 212 100 0035	10 m
33 56 212 050 0034	5 m
33 56 212 010 0033	1 m
33 56 212 005 0032	0.5 m
Part-No.	Dim.L

All Dimensions in mm Original Size DIN A 3			Techn. Character.			Free size tolerances			
Mod.	Da.t.	Name	Detail	Dot.	Name	Scale	HD D-sub 44P MALE OVERMOLDING DOUBLE END CABLE ASSEMBLY, L=xM		
			Insp.	09/11/08	Andrew.H			/	
			Stand.						
ZHUHAI HARTING LIMITED						TB	33 56 0006.00		
						Sub.	Page		