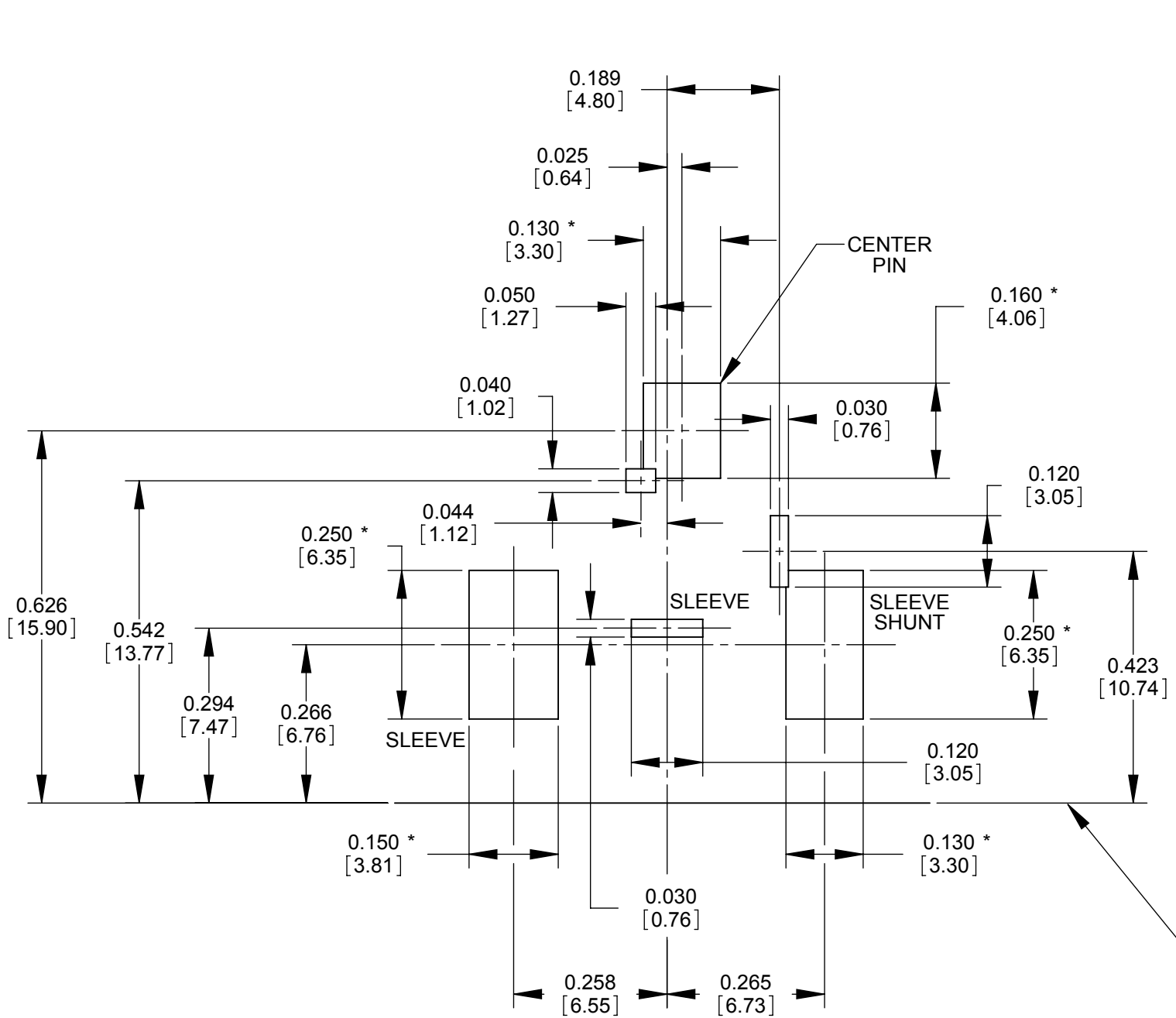


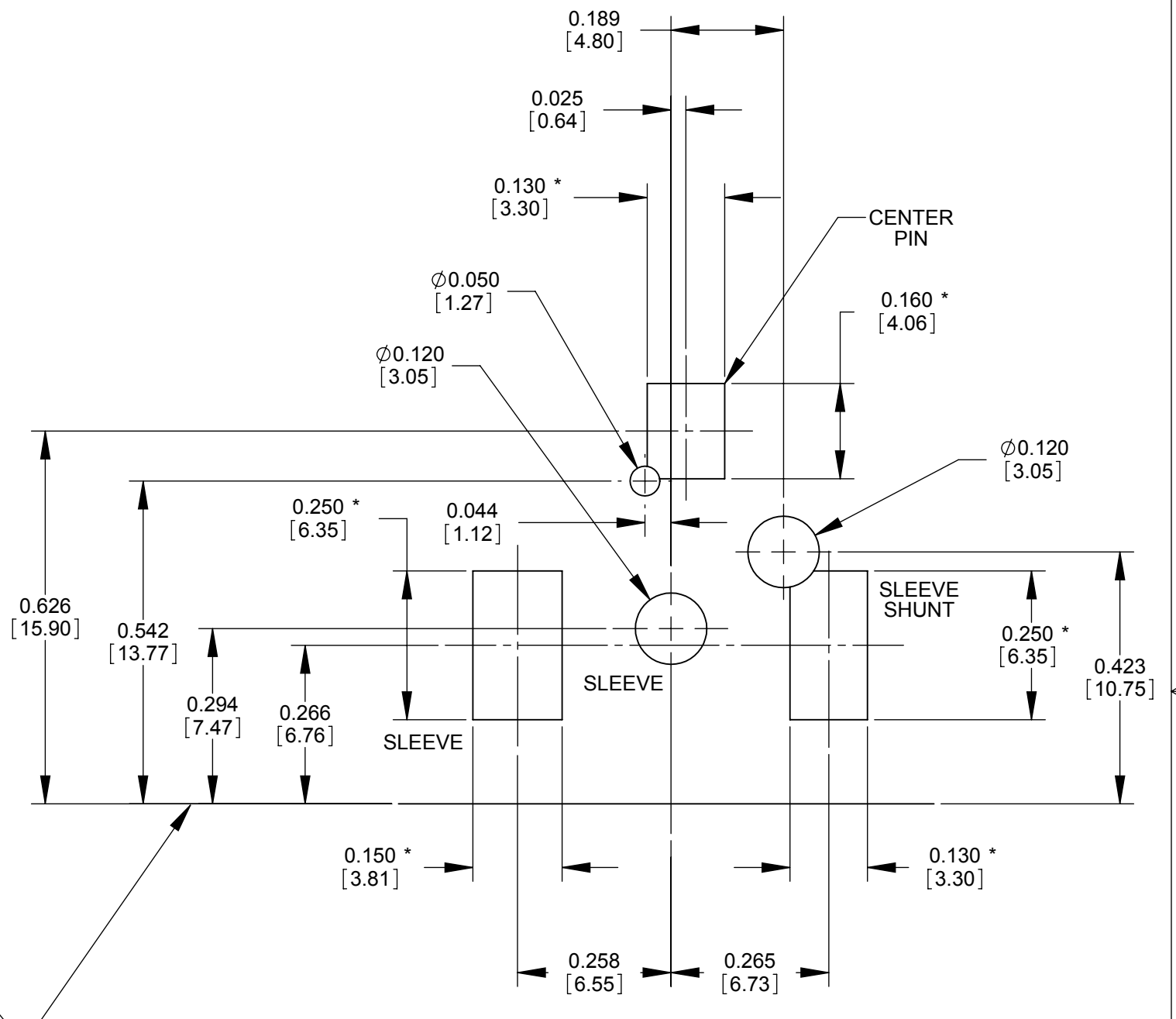
- NOTES:**
- THIS PRODUCT IS RoHS COMPLIANT.
  - MATERIALS:**  
 CENTER PIN: COPPER ALLOY, NICKEL PLATED  
 SLEEVE CONTACT: SPRING COPPER ALLOY, SILVER PLATED  
 PIN TERMINAL AND SHUNT: COPPER ALLOY, SILVER PLATED  
 HOUSING AND COVER: HIGH TEMPERATURE THERMOPLASTIC, BLACK
  - SPECIFICATIONS:**  
 LIFE: 5000 CYCLES;  
 INSERTION FORCE: 5LB [2.3 KG] MAX;  
 WITHDRAWL FORCE: 0.5 LB [0.2 KG] MIN;  
 CONTACT RESISTANCE: 30 MILLIOHM MAX, 60 MILLIOHM MAX. AFTER TEST;  
 INSULATION RESISTANCE: 30 MEGAOHM MIN. @ 100VDC;  
 DIELECTRIC WITHSTANDING VOLTAGE: 250VAC FOR 1 MINUTE;  
 CURRENT (CARRYING): 5A  
 OPERATING TEMPERATURE: -30°C TO +65°C

**CUSTOMER DRAWING**

					STAR SYMBOL DENOTES CRITICAL DIMENSION	THIS DRAWING DESCRIBES A DESIGN CONSIDERED PROPRIETARY IN NATURE, DEVELOPED AND MANUFACTURED BY SWITCHCRAFT INC. AND IS RELEASED ON A CONFIDENTIAL BASIS FOR IDENTIFICATION PURPOSES ONLY.					
					UNLESS OTHERWISE SPECIFIED	SIZE	WIDTH	MULT	LBS/M	TEMPER	
					1. ALL DIMENSIONS IN INCHES	FINISH				MATERIAL	
					- TWO PLACE DECIMALS ±0.02	SPEC No.				SPEC No.	
					- THREE PLACE DECIMALS ±0.005	FIRST USED ON		SCALE		<b>Switchcraft</b> <sup>®</sup>	
						4:1					
A	ECO 25775	1/22/07	BS	TJK	DATE DRAWN	BY	CHKD	APVD	SHEET 1 OF 2		
REV	ECO NUMBER	DATE	BY	APVD	1/17/07	BS	TJK	TJK	PART No.		
REVISIONS					DO NOT SCALE DRAWING					RASH712BK	
										REV A	



RECOMMENDED PC BOARD LAYOUT (COMPONENT SIDE)



ALTERNATE PC BOARD LAYOUT (COMPONENT SIDE)

JACK MATING FACE (EDGE OF PC BOARD)

NOTE: \* SURFACE MOUNT PADS.

CUSTOMER DRAWING

SCALE 4:1	Switchcraft®
DATE DRAWN 08/20/08	
DRAWN BY BS	TOOL No. RASH712BK
	SHEET 2 OF 2
	REV A

SolidWorks CAD File **B**