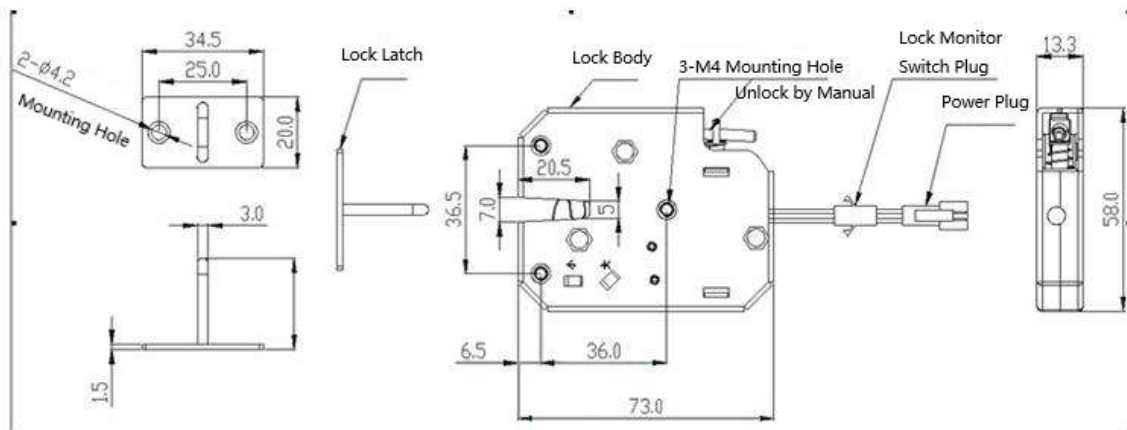


# Electric Solenoid Lock

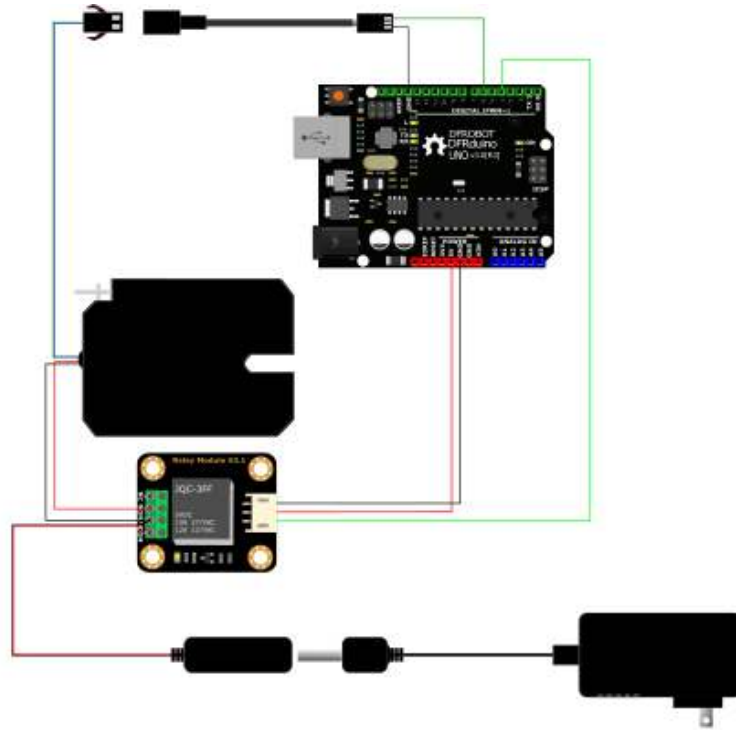
SKU:FIT0620

This is a high-quality electric solenoid lock with steel-made case and steel casting parts. It adopts solid and durable latch hook which assured a long usage life over 500 thousands times. Pure copper electromagnetic valve coil, stable performance and temperature tolerance. Plug in external power to unlock it. The electric lock comes with signal feedback by which you can check the state of the lock easily. Use it with other controllers and fittings to realize more functions such as intelligent control lock, IoT(Internet of Things), etc.

**Please note** that you'd better control the electrify time within 5 seconds when unlocking the lock. Long electrify time will damage the solenoid valve.



Connection Diagram



## SPECIFICATION

- Operation Voltage: 12V DC
- Operating Current: 1.5A
- Dimension: 73\*58\*13.3mm/2.87\*2.28\*0.52"
- Do not electrify the lock for a long time(<5s)

## SHIPPING LIST

- Electric Solenoid Lock x1
- Gravity Connector x1
- Latch x1



<https://www.dfrobot.com/product-1856.html/6-10-19>