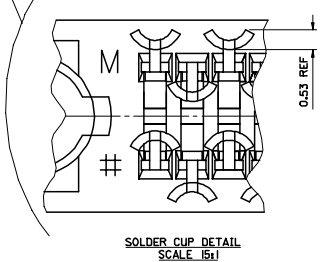


PARTIAL VIEW  
FRONT BUTTON OMITTED FOR CLARITY

- NOTES:  
 1. CIRCUIT NUMBERS IDENTIFIED FOR MEASUREMENT PURPOSES  
 2. 0.25° DRAFT ANGLE ALLOWED ON ALL FACES UNLESS OTHERWISE STATED  
 3. UNSPECIFIED RADII TO BE 0.20mm MAX  
 4. MOLEX I.D. AND CAVITY NO. LO HIGH-RAISED 0.1 WHERE SHOWN  
 5. SEE PRODUCT SPECIFICATION No. PS-99020-0086  
 6. RF KIT NO. 90853-0001. SEE SDA-90853.

| ASSEMBLY NO. | HOUSING PART NO. | RF CORING CONFIG | C-SHAPE PEG | INCLUDING RF KIT |
|--------------|------------------|------------------|-------------|------------------|
| 91229-1004   | 91229-0001       | RF               | YES         | YES              |
| 91229-1005   | 91229-0002       | VOID             | YES         | NO               |
| 91229-1006   | 91229-0003       | VOID             | NO          | NO               |
| 91229-1007   | 91229-0003       | RF               | NO          | YES              |

| COMPONENT | DESCRIPTION  |
|-----------|--|
| 1 HOUSING | POLYAMIDE (PA46) 45% GLASS FILL, UL94  |
| 2 SIGNALS | MATERIAL: 0.25mm PHOSPHOR BRONZE<br>PLATING: 0.10um MIN. GOLD FLASH ON 1.0um MIN. PALLADIUM NICKEL, WITH 1.27-2.50um NICKEL UNDERPLATE<br>3-5um TIN MIN. IN SOLDER CUP AREA  |
| 3 RF KIT  | CENTRE PIN: BRASS, PLATING: Sn OVER NICKEL<br>DIELECTRIC INNER FERRULE: PC<br>BRASS, PLATING: Sn OVER NICKEL<br>OUTER FERRULE: BRASS, PLATING: Sn OVER NICKEL<br>SHIELD: PHOSPHOR BRONZE, PLATING: Sn OVER NICKEL<br>AU FLASH OVER PALLADIUM NICKEL IN THE CONTACT AREA, TIN IN THE CRIMP ZONE |



|   |  |  |   |   |  |
|---|--|--|---|---|--|
| MODIFY MATERIAL<br>EC INC. E2005-036<br>DRIVING CARTON 2005/03/02<br>CHECKED 2005/06/10<br>APPROVED/AN 2005/06/12 | QUALITY SYMBOLS<br>▽=2<br>▽=0                        | GENERAL TOLERANCES (UNLESS SPECIFIED)<br>4 PLACES ± 0.10<br>3 PLACES ± 0.05<br>2 PLACES ± 0.05<br>1 PLACE ± 0.10<br>ANGULAR ± 2° | DIMENSION STYLE: IN/MM<br>SCALE: 1:1<br>DESIGN UNITS: INCH<br>FIRST ANGLE PROJECTION  | DRAWN BY: CTGBIN<br>DATE: 99/06/09<br>CHECKED BY: FUGGAN<br>DATE: 99/06/09<br>APPROVED BY: EFOLAN<br>DATE: 99/06/09 | TITLE: SYSTEM CONNECTOR CRADLE HOUSING SUB ASSEMBLY<br>MOLEX INCORPORATED<br>DOCUMENT NO. SD-91229-001<br>SHEET NO. 1 OF 1 |
|   | DRAFT WHERE APPLICABLE MUST REMAIN WITHIN DIMENSIONS |  | THIS DRAWING CONTAINS INFORMATION THAT IS PROPRIETARY TO MOLEX INCORPORATED AND SHOULD NOT BE USED WITHOUT WRITTEN PERMISSION |   |  |