
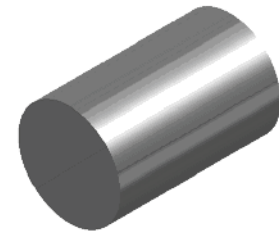
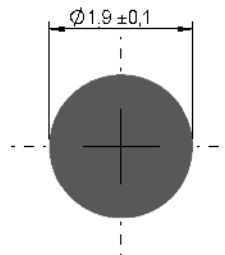
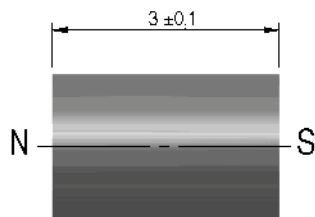


**Dimensions (mm)**

 tolerances according to DIN ISO 2768-m  
 Toleranzen gem. DIN ISO 2768-m

**Isometric**

Scale 10:1  
 Massstab 10:1



Dimensions	Conditions	Min	Typ	Max	Unit
Height h		2,9	3	3,1	mm
External diameter D		1,8	1,9	2	mm

Mag. values DIN IEC 60404-8-	Conditions	Min	Typ	Max	Unit
Remanent Induction Br		900	925		mT
Max. operating temperature				250	°C
Magnetic moment	measured with MS150	0,6	0,7	0,8	E-6 Vs*cm
Magnet Material					
Direction of Magnetization					

General data	Conditions	Min	Typ	Max	Unit
Remarks					