

MATERIALS AND FINISHES

BODY BRASS
PLATED GOLD

CENTER CONTACT BRASS
PLATED GOLD

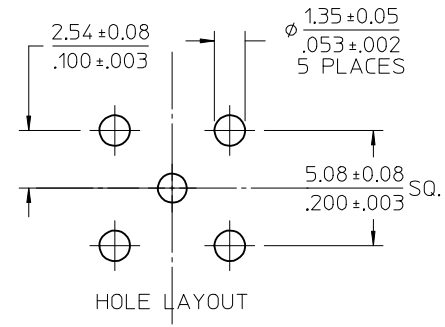
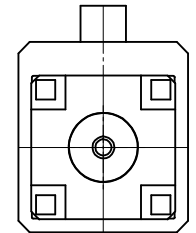
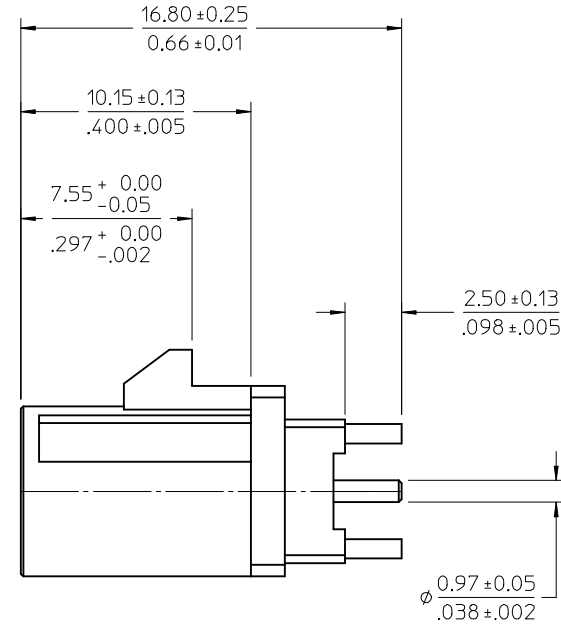
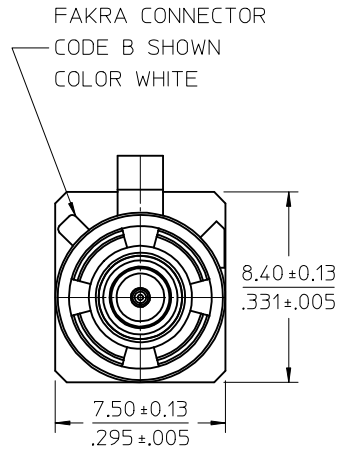
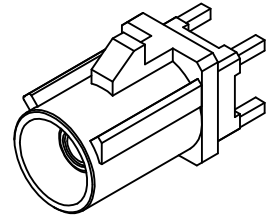
OUTER CASING NYLON46 30GF (STANYL TS200F6)
KEYING CODE B
COLOR WHITE

INSULATOR: TEFLON

RETENTION SPECIFICATION:

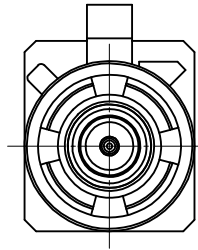
THE FAKRA CONNECTOR SHROUD WILL WITHSTAND
A LONGITUDINAL FORCE OF 110 N(24.75 LBS)

PACKAGE BY TRAY

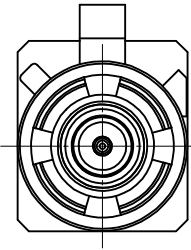


PS-89675-3310	PRODUCT SPECIFICATION
MIL-STD-348A, FIG. 311.1	INTERFACE
SPECIFICATION	DESCRIPTION

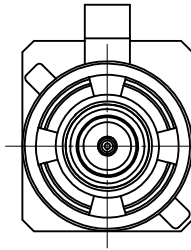
ADDED PACKAGE PER RF16-E032 EC NO: URF2016-0610 DRW: ELIN 2016/03/08 CHKD: APPR: YCHENG 2016/03/08 A1	QUALITY SYMBOLS	GENERAL TOLERANCES (UNLESS SPECIFIED)	DIMENSION STYLE	SCALE	DESIGN UNITS	THIRD ANGLE PROJECTION
	▽=0	mm INCH	MM/IN	5:1	METRIC	
	▽=0	4 PLACES ± --- ± ---	DRAWN BY DATE	TITLE	SMB FAKRA JACK STR. 50 OHMS FOR PCB FAKRA-J/PCB	
	▽=0	3 PLACES ± --- ± ---	EL IN 2012/04/02	SEE SHEET 2		
	ANGULAR ± 2 °	2 PLACES ± --- ± ---	CHECKED BY DATE	SD-73403-624		
	DRAFT WHERE APPLICABLE MUST REMAIN WITHIN DIMENSIONS	1 PLACE ± --- ± ---	KERRIE 2012/04/02			
		0 PLACE ± --- ± ---	APPROVED BY DATE	DOCUMENT NO. SHEET NO.		
			MHUANG 2012/12/21			
			MATERIAL NO.	THIS DRAWING CONTAINS INFORMATION THAT IS PROPRIETARY TO MOLEX INCORPORATED AND SHOULD NOT BE USED WITHOUT WRITTEN PERMISSION		



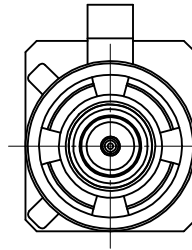
CODE-A



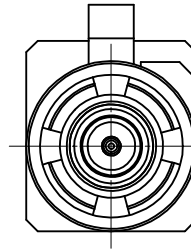
CODE-B



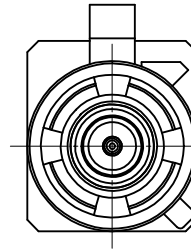
CODE-C



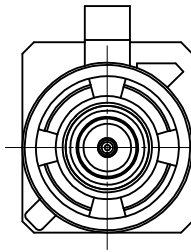
CODE-D



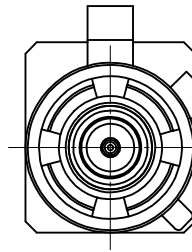
CODE-E



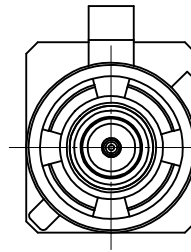
CODE-F



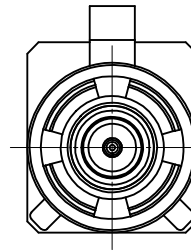
CODE-G



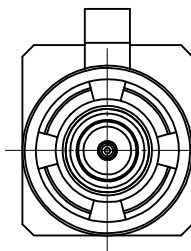
CODE-H



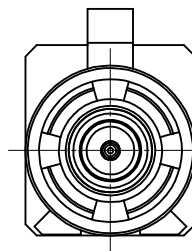
CODE-I



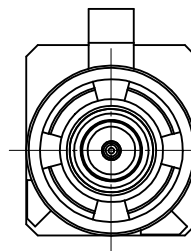
CODE-K



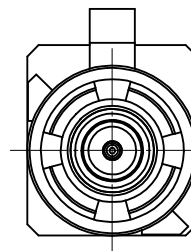
CODE-Z



CODE-L



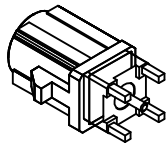
CODE-M



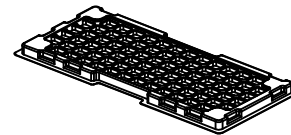
CODE-N

N	PASTEL GREEN	73403-6253
M	PASTEL ORANGE	73403-6252
L	CARMINE RED	73403-6251
Z	WATER BLUE	73403-6250
K	CURRY YELLOW	73403-6249
I	BEIGE	73403-6248
H	VIOLET	73403-6247
G	GRAY	73403-6246
F	BROWN	73403-6245
E	GREEN	73403-6244
D	BORDEAUXVIOLET	73403-6243
C	BLUE	73403-6242
B	SIGNAL WHITE	73403-6241
A	BLACK	73403-6240
KEYING CODE	COLOR	PART NO.

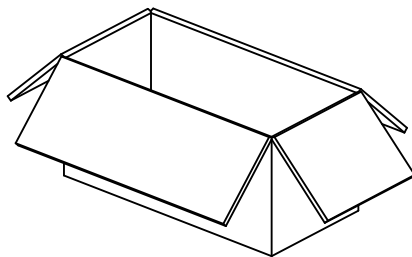
SEE SHEET 1 EC NO: URF2016-0610 DRW: INELIN 2016/03/08 CHKD: APPR: YCHENG 2016/03/08 REV: A1	QUALITY SYMBOLS = 0 = 1 = 2	GENERAL TOLERANCES (UNLESS SPECIFIED) <table border="1"> <tr> <td></td> <td>mm</td> <td>INCH</td> </tr> <tr> <td>4 PLACES</td> <td>± ---</td> <td>± ---</td> </tr> <tr> <td>3 PLACES</td> <td>± ---</td> <td>± ---</td> </tr> <tr> <td>2 PLACES</td> <td>± ---</td> <td>± ---</td> </tr> <tr> <td>1 PLACE</td> <td>± ---</td> <td>± ---</td> </tr> <tr> <td>0 PLACE</td> <td>± ---</td> <td>± ---</td> </tr> </table>		mm	INCH	4 PLACES	± ---	± ---	3 PLACES	± ---	± ---	2 PLACES	± ---	± ---	1 PLACE	± ---	± ---	0 PLACE	± ---	± ---	DIMENSION STYLE MM/IN DRAWN BY: EL IN DATE: 2012/04/02 CHECKED BY: KERRIE DATE: 2012/04/02 APPROVED BY: MHUANG DATE: 2012/12/21	SCALE 1:1 TITLE SMB FAKRA JACK STR. 50 OHMS FOR PCB FAKRA-J/PCB	DESIGN UNITS METRIC THIRD ANGLE PROJECTION	MATERIAL NO. SEE TABLE	DOCUMENT NO. SD-73403-624	SHEET NO. 2 OF 3
		mm	INCH																							
	4 PLACES	± ---	± ---																							
	3 PLACES	± ---	± ---																							
2 PLACES	± ---	± ---																								
1 PLACE	± ---	± ---																								
0 PLACE	± ---	± ---																								
ANGULAR ± 2 °		DRAFT WHERE APPLICABLE MUST REMAIN WITHIN DIMENSIONS		molex		THIS DRAWING CONTAINS INFORMATION THAT IS PROPRIETARY TO MOLEX INCORPORATED AND SHOULD NOT BE USED WITHOUT WRITTEN PERMISSION																				



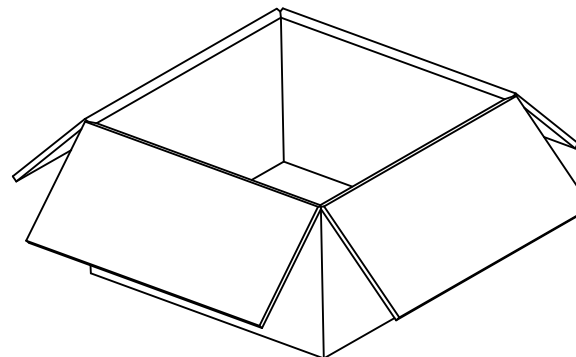
PART NO.: 73403-6240 ~ 73403-6253



80 SET PER TRAY
P/N: 89707-0190



1600 SET PER INNER CARTON BOX
P/N: 96707-0001



3200 SET PER OUTER CARTON BOX
P/N: 96708-0005

SEE SHEET 1 EC NO: URF2016-0610 DRAWN BY: DRWNLIN CHKD: APPR: YCHENG 2016/03/08 2016/03/08	QUALITY SYMBOLS	GENERAL TOLERANCES (UNLESS SPECIFIED)		DIMENSION STYLE MM/IN		SCALE 1:5	DESIGN UNITS METRIC	THIRD ANGLE PROJECTION	
	▽=0	mm	INCH	DRAWN BY	DATE	TITLE SMB FAKRA JACK STR. 50 OHMS FOR PCB FAKRA-J/PCB molex DOCUMENT NO. SD-73403-624 SHEET NO. 3 OF 3			
	▽=0	4 PLACES ± --- ± ---	EL IN	2012/04/02					
	▽=0	3 PLACES ± --- ± ---	CHECKED BY	DATE					
	▽=0	2 PLACES ± --- ± ---	KERRIE	2012/04/02					
▽=0	1 PLACE ± --- ± ---	APPROVED BY	DATE						
▽=0	0 PLACE ± --- ± ---	MHUANG	2012/12/21	MATERIAL NO.					
		ANGULAR ± 2 °		SEE SHEET 1					
		DRAFT WHERE APPLICABLE MUST REMAIN WITHIN DIMENSIONS		SIZE C		THIS DRAWING CONTAINS INFORMATION THAT IS PROPRIETARY TO MOLEX INCORPORATED AND SHOULD NOT BE USED WITHOUT WRITTEN PERMISSION			