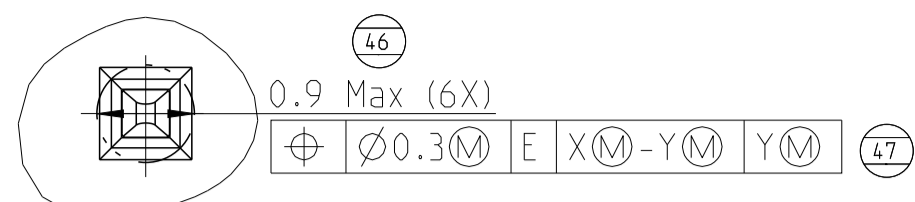
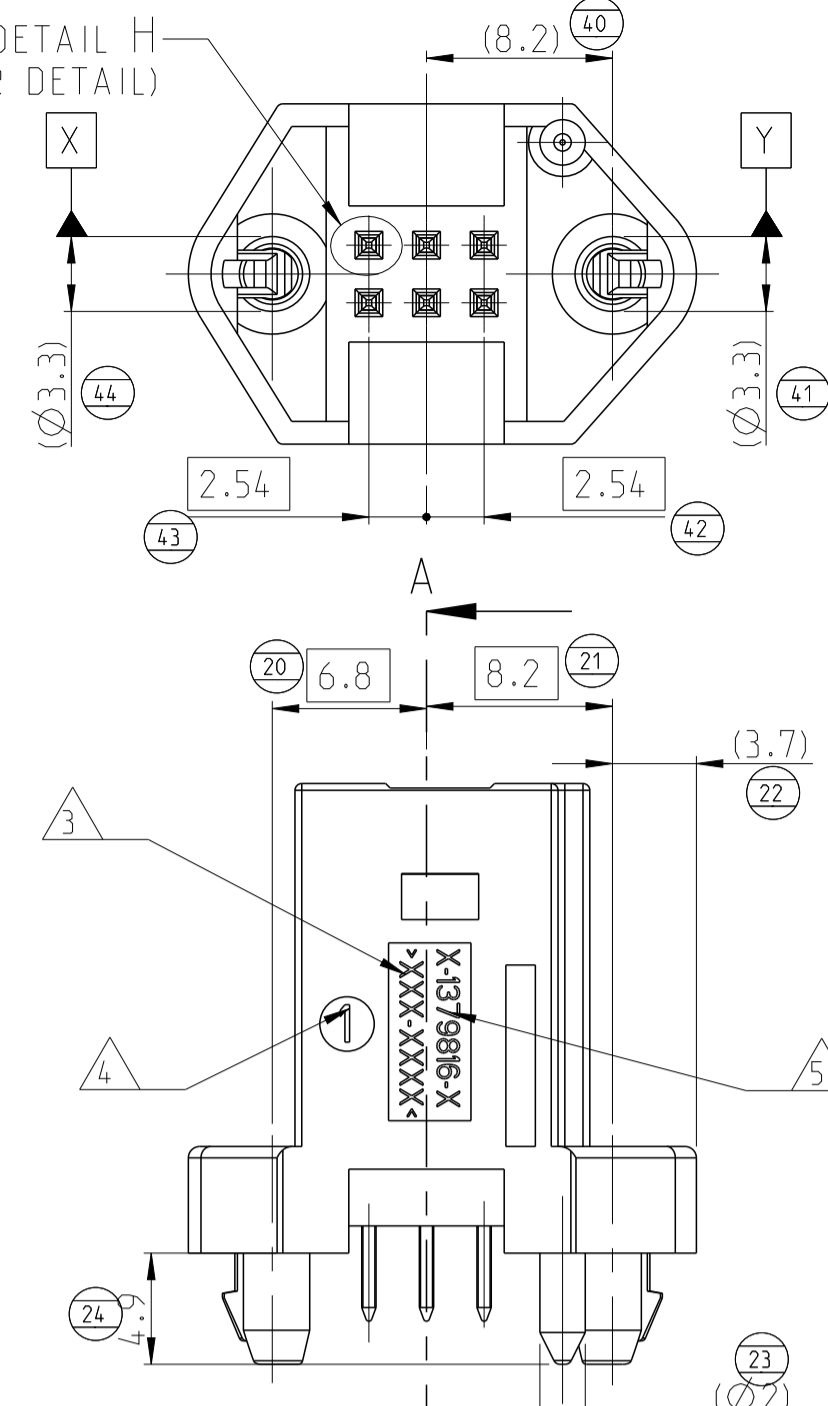


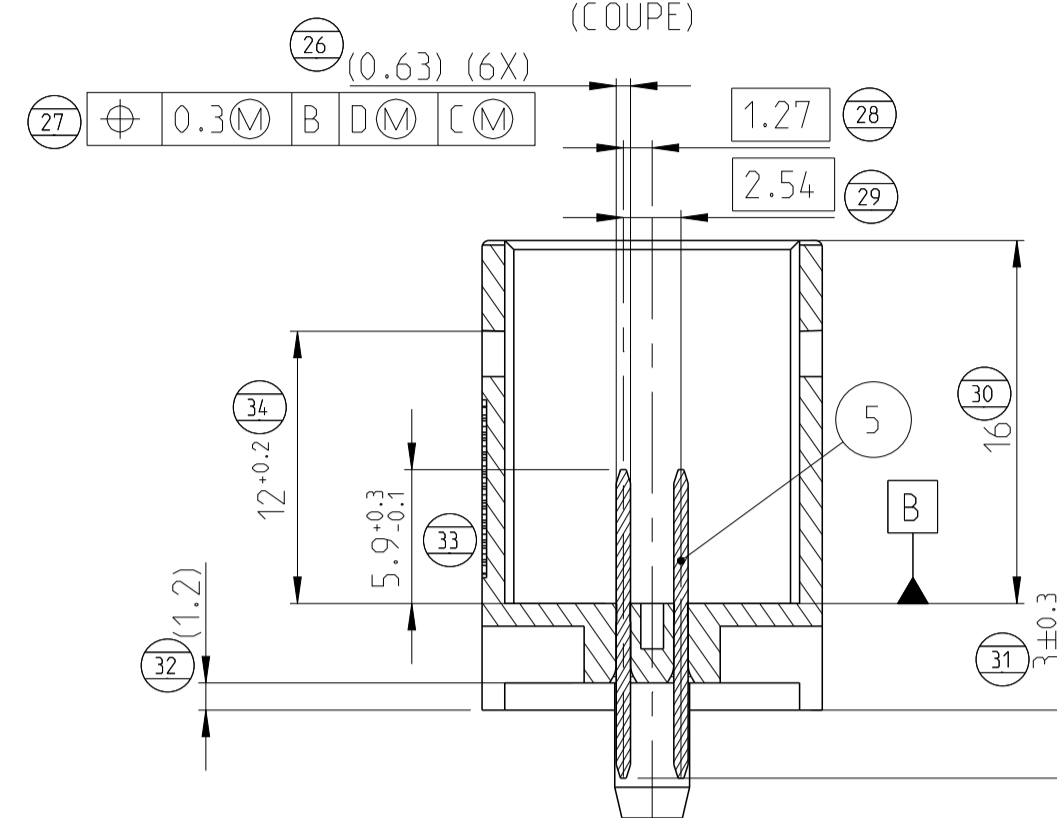
DETAIL H
SCALE (ECH.):10:1



SEE DETAIL H
(VOIR DETAIL)



SECTION A-A
(COUPE)



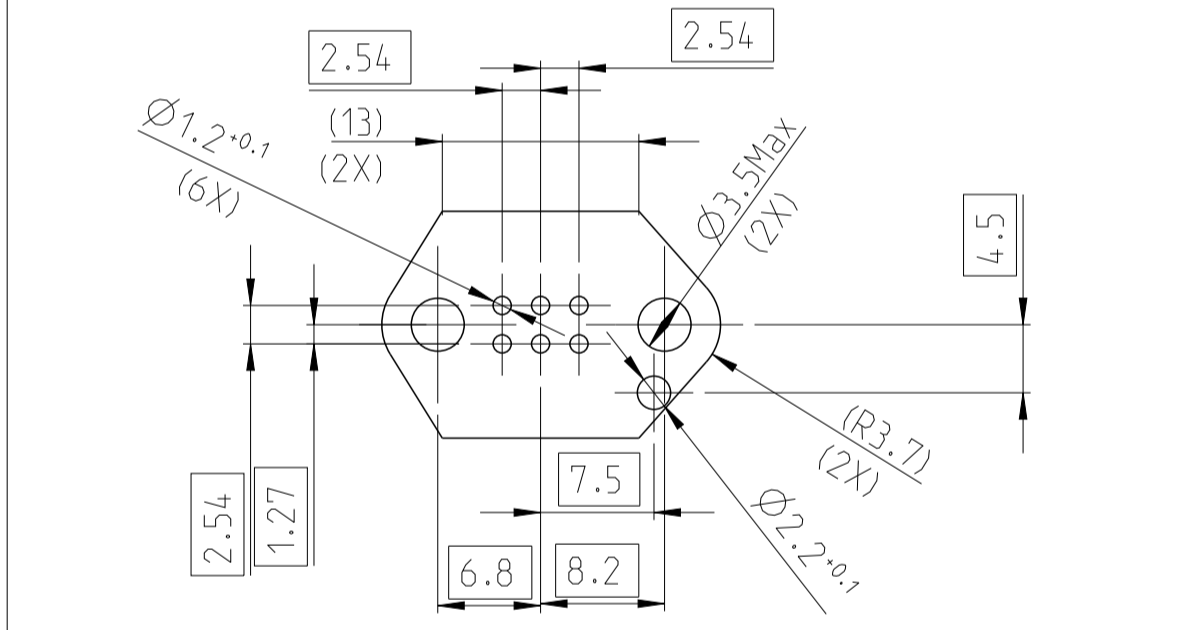
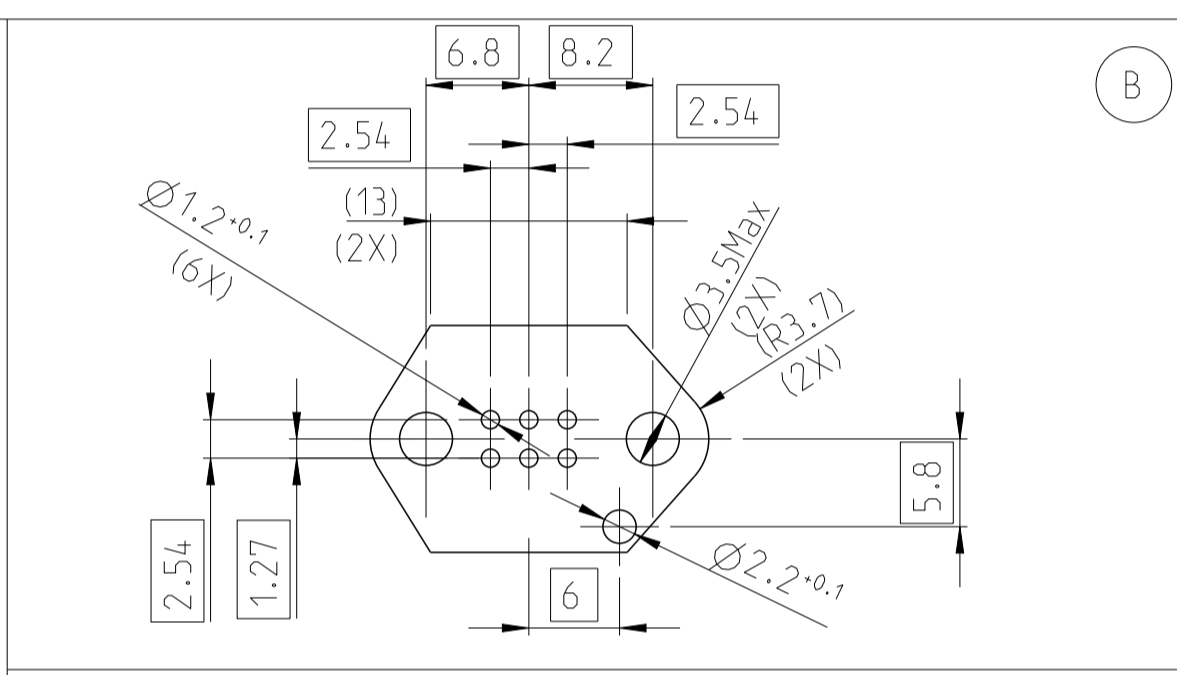
NOTES :

- 50 1 PRODUCTION DATE OF PLASTIC PART / DATE DE PRODUCTION DU BOITIER PLASTIQUE
- 51 2 TE LOGO / LOGO DE TE
- 52 3 MATERIAL REFERENCE : SEE THE TABLE / REFERENCE MATIERE : VOIR TABLEAU
- 53 4 MOLD CAVITY MARKING / MARQUAGE D'EMPREINTE DU MOULE
- 54 5 ASSEMBLY TE PART NUMBER / REFERENCE DE TE PRODUIT ASSEMBLE
- 55 6 CAVITY MARKING / MARQUAGE DES ALVEOLES
- 7 DIMENSION IN BRACKETS FOR INFORMATION ONLY / COTE ENTRE PARENTHESES POUR INFORMATION UNIQUEMENT

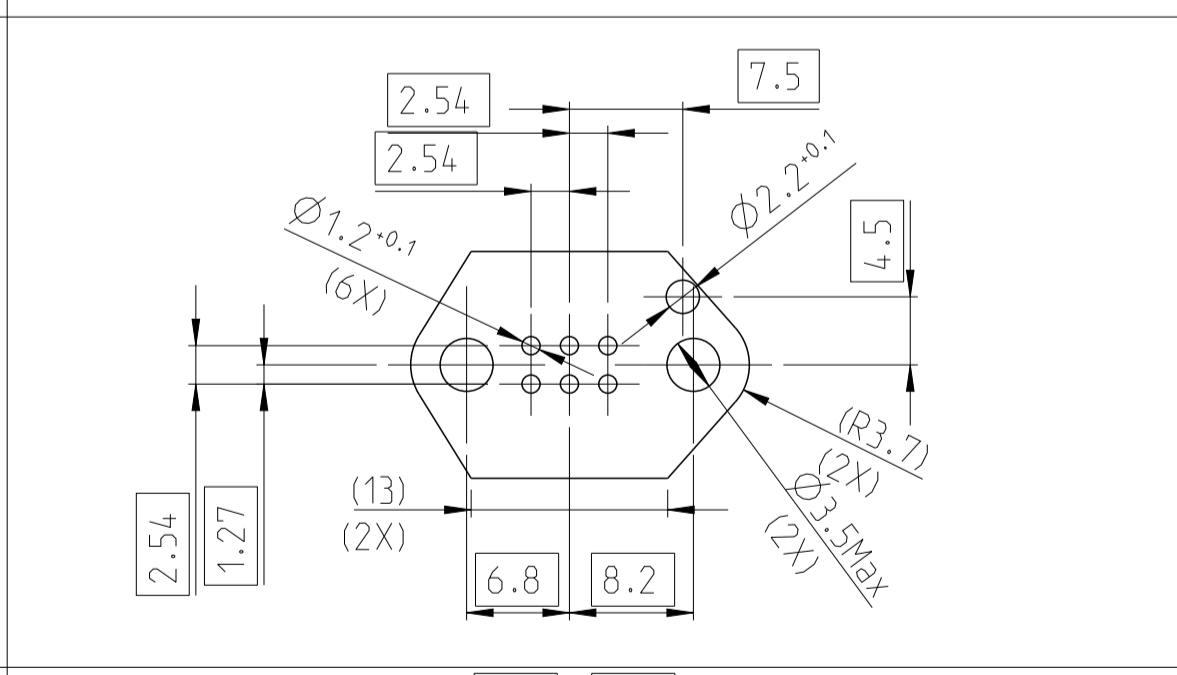
**INFLAMMABILITE
FLAMABILITY**

REVISIONS					
P	LTN	DESCRIPTION	DATE	DWN	APPV
REV		MODIFICATIONS		LESS	APP
A		NEW DRAWING	18AUG2014	MN	JL
B		ADDED NEW P/N 2-1379816-4	23JUN2015	NT	J.L

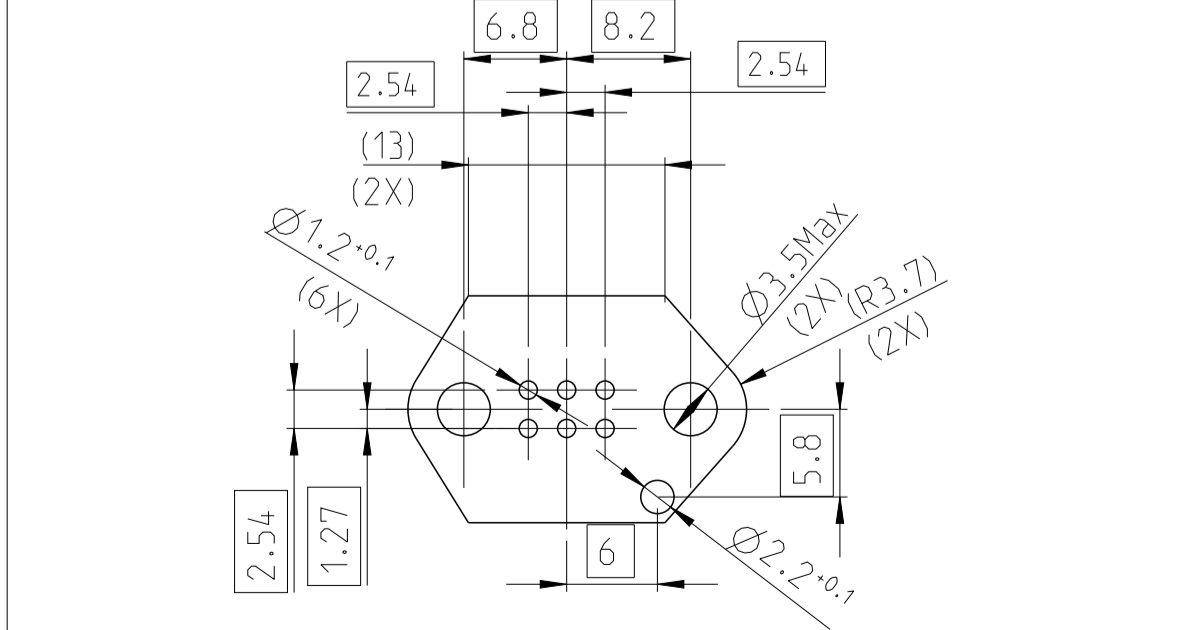
2-1379816-4
BROWN (MARRON)
1379816-4 & 1-1379816-4



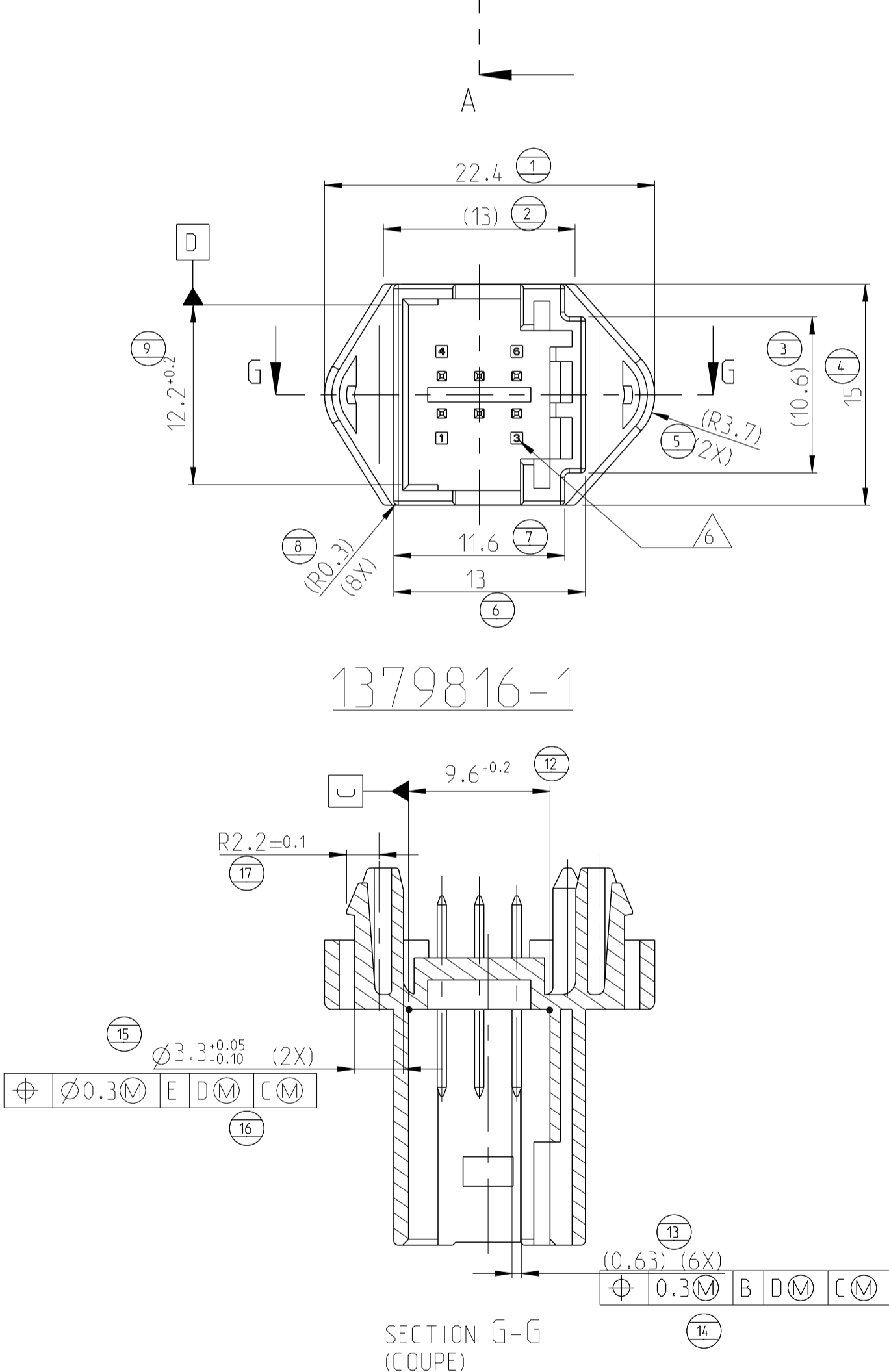
1379816-3 & 1-1379816-3
GREEN (VERT)



1379816-1 & 1-1379816-1
BLACK (NOIR)



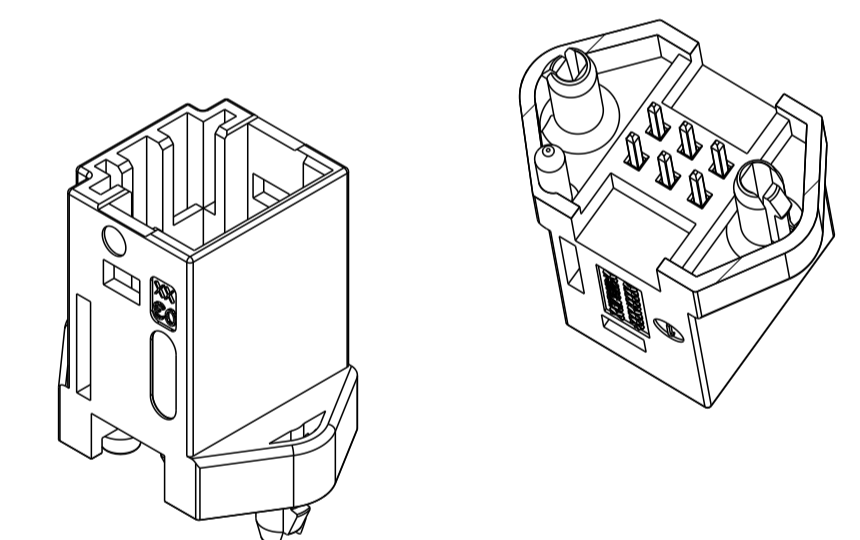
RECOMMENDED PCB LAYOUT
(RECOMMANDATION IMPLANTATION C1)
VIEW FROM TOP / VUE DE DESSUS
PCB THICKNESS / EPAISSEUR C1 = 1.6±10%



1379816-1

SECTION G-G
(COUPE)

ASS'Y P/N / REF. / ASSEMBLEE	QTY (QTE)	FINITION	MATERIAL (MATIERE)	DESIGNATION	ITEM
1379816-1	6	PRE-TINNED (PRE-ETAME) 2.5 TO 5UM OVER NICKEL (2.5 A 5UM SUR SOUS COUCHE NICKEL)	CuSn6	PIN (BROCHE)	5
1379816-3	6	BROWN (MARRON)	PCT GF30 (UL94 VO)	HOUSING 6W MQS (BOITIER 6V MQS)	4
1379816-4	6	BROWN (MARRON)	PCT GF30		4
1-1379816-1	6	GREEN (VERT)	PCT GF30		3
1-1379816-3	6	BLACK (NOIR)	PCT GF30 (UL94 VO)		1
1-1379816-4	6	BROWN (MARRON)	SPS GF20		4
2-1379816-4	6	GREEN (VERT)	SPS GF20		3
	1	BLACK (NOIR)	BLACK (NOIR)		1



SCALE (ECH.):2:1

THIS DRAWING IS A CONTROLLED DOCUMENT. LE PLAN EST UN DOCUMENT CONTROLÉ PAR TPC/ÉLECTRONICS. IL EST SOUS LE SEUL POUVOIR DES PROPRIÉTAIRES ET SERA DESTROYÉ APRÈS SA RÉSILIATION.

TOLERANCES UNLESS OTHERWISE SPECIFIED:
DIMENSIONS: mm. TOLERANCES: µm.
FINISH: HASL. TOLERANCES: µm. FINITION: HASL. TOLERANCES: µm.

DWN: R. CHAKRABARTI / MADHUSUDHAN
CHK: R. CHARLES
APV: R. CHARLES
18AUG2014

NAME: 6W MQS HEADER WITH BOARD-LOCKS / EMBASE 6V MQS AVEC BOARD-LOCKS

SIZE: A1. CAGE CODE: 00779. DRAWING NO: 1379816. SHEET: 1 OF 1. REV: B

MATERIAL: HASL. FINITION: HASL. WEIGHT: -. MASS: -. CUSTOMER DRAWING: PLAN CLIENT. UNIFORMITY: POUR REFERENCE. SCALE: 3:1. SHEET: 1 OF 1. REV: B.