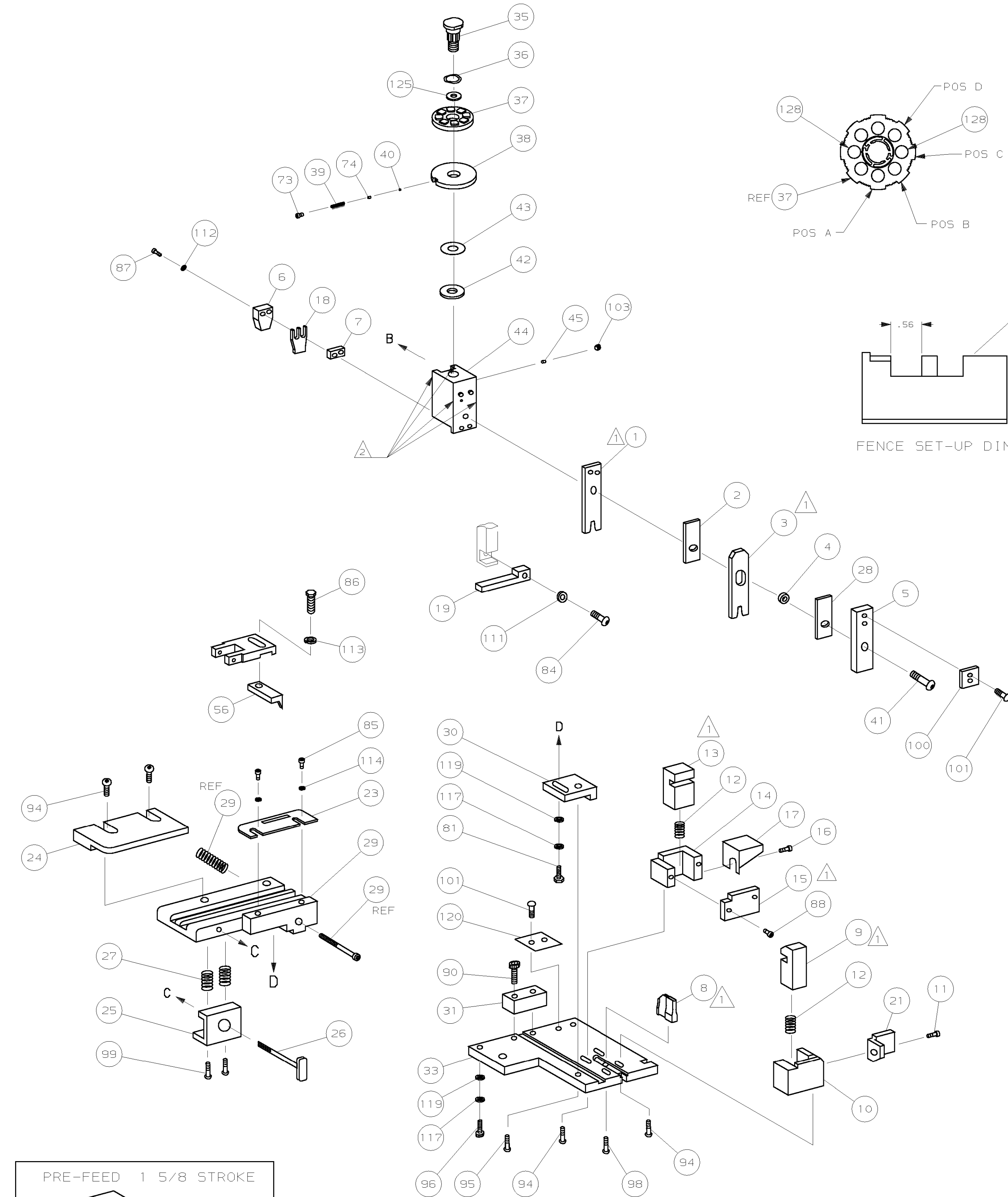


PART NUMBER	REV	FIRST USED
567968-1	A	854040-3

TERMINAL NAME: CONTACT, TWIN LEAF					
VISIBLE PAD LTR	CRIMP HEIGHT	CRIMP DATA (AMP TERMINAL)			
		WIRE SIZE	CRIMP	SIZE	TYPE
A	.045 ±.002 [1.14 ±0.05mm]	18			
B	NOT	USED			
C	NOT	USED			
D	NOT	USED			
WIRE	INSUL	CRIMP	SIZE	TYPE	RANGE
.080 [2.03mm]	.140 [3.56mm]	0	F		18
WIRE STRIP LENGTH .125-.141 TERM APPL SPEC 114-9004 FEED .330 APPL INSTRUCTION SEE CUSTOMER MANUAL SET UP GAGE NONE LAYOUT L2411					

SIM TO HDM 687775-2

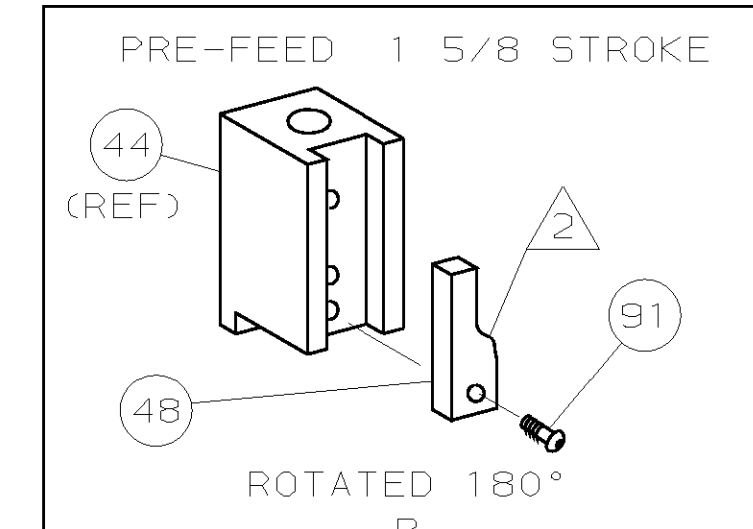


QTY	REV	U/M	DWG SIZE	PART NO	DESCRIPTION	ITEM NO
2	-	C		4-354779-6	PIN, WIRE DISC (.3220)C	129
						128
						127
						126
1	-	A		986950-1	WASHER, FLAT PRECISION	125
1	-	A		217238-3	GENERAL INSTRUCTION PACKAGE	124
						123
						122
						121
1	-	B		690701-2	PLATE, SERIAL NO.	120
2	-	A		21899-2	WASHER, FLAT (#10)S G ADJ BLK	119
						118
2	-	A		21024-5	WASHER, LOCK (#10)ADJ BLOCK	117
						116
						115
2	-	A		21024-2	WASHER, LOCK (#4)FRONT STP GUIDE	114
REF	-	A		21024-4	WASHER, LOCK (#8)FEED FINGER	113
2	-	A		21024-4	WASHER, LOCK (#8)DEP-HOLD	112
REF	-	A		21024-4	WASHER, LOCK (#8)STRIPPER	111
						110
						109
						108
						107
						106
						105
						104
1	-	A		21009-2	SCR, 5KT SET (1/4-20x.25 LW)RAM	103
						102
4	-	A		21017-2	SCR, DRIVE (#2x.19)ID PLATE	101
1	-	B		819347-1	PLATE, IDENTIFICATION	100
2	-	A		3-21002-0	SCR, BHC (10-32x.88)DRAG	99
1	-	A		22733-8	SCR, BHC (8-32x.38 LW)ANVIL	98
						97
1	-	A		3-21000-8	SCR, SHC (10-32x.88)MOUNTING	96
1	-	A		2-21002-7	SCR, BHC (10-32x.50)SG ADJ BLK	95
6	-	A		2-21002-2	SCR, BHC (8-32x.50)SHEAR-TERM SUP	94
						93
						92
1	-	A		1-21002-7	SCR, SHC (6-32x.50)CAM	91
2	-	A		2-21000-7	SCR, SHC (8-32x.50)SCR BLK	90
						89
2	-	A		1-21000-8	SCR, SHC (6-32x.25)REAR SHEAR PL	88
2	-	A		3-21000-0	SCR, SHC (8-32x.84)DEP-HOLD DOWN	87
REF	-	A		2-22603-0	SCR, HEX HD (8-32x.31)FEED FINGER	86
2	-	A		1-21000-3	SCR, SHC (4-40x.25)F ST GUIDE	85
REF	-	A		22733-9	SCR, BHC (8-32x.50 SL)STRIPPER	84
						83
						82
1	-	A		3-22603-1	SCR, HEX (10-32x.38)SG ADJ BL	81
						80
						79
						78
2	-	B		463310-4	BLADE, STRIPPING (#18)	77
						76
						75
1	-	A		690603-1	SPRING, ASSIST	74
1	-	A		23030-1	SCR, 5KT CAP (6-32x.25)CP DSC	73
						72
						71

QTY	REV	U/M	DWG SIZE	PART NO	DESCRIPTION	ITEM NO
						70
						69
						68
						67
						66
						65
						64
						63
						62
						61
						60
						59
						58
						57
REF	-	B		694433-8	PAWL, FEED	56
						55
						54
						53
						52
						51
						50
						49
1	-	A		690602-6	CAM, PRE-FEED 1.62 STROKE	48
						47
						46
1	-	A		690191-1	PLUG, NYLON	45
1	-	C		455673-1	RAM	44
1	-	A		690125-1	WASHER, LAMINATED	43
1	-	A		690124-1	WASHER, RAM	42
1	-	A		7-21002-9	BOLT, CRIMPER (5/16x1.00)	41
1	-	A		23241-6	BALL, STEEL	40
1	-	A		690170-1	SPRING, COMPRESSION	39
1	-	C		690142-1	DISC, INSULATION	38
1	-	D		354777-1	WIRE DISC, PLASTIC	37
1	-	A		22480-5	WASHER, SPRING	36
1	-	B		690212-1	POST, RAM	35
						34
1	-	C		462544-1	PLATE, BASE SPECIAL	33
						32
1	-	B		462543-1	BLOCK, SCREW SPECIAL	31
1	-	B		455689-1	BLOCK, STRIP GUIDE ADJ	30
1	-	C		318042-1	STRIP GUIDE PLATE ASSY	29
1	-	C		1-455888-0	SPACER, FRONT SHEAR DEP	28
2	-	A		1-22284-0	SPRING, DRAG	27
1	-	B		690546-1	LEVER, DRAG RELEASE	26
1	-	B		240792-1	DRAG, TERMINAL	25
1	-	D		6-690504-0	GUIDE, STRIP (REAR)	24
1	-	A		690438-1	GUIDE, STRIP (FRONT)	23
						22
1	-	A		463756-1	GUIDE, SCRAP	21
						20
REF	-	C		462615-1	STRIPPER	19
1	-	B		1-690518-1	HOLDER, TERMINAL	18
1	-	A		691668-1	GUARD, CHIP (REAR)	17
1	-	A		690461-1	STOP, SHEAR (REAR)	16
1	-	B		690691-9	PLATE, SHEAR (REAR)	15
1	-	B		690462-1	HOLDER, SHEAR (REAR)	14
1	-	C		690463-1	SHEAR, FLOAT (REAR)	13
2	-	A		5-22280-0	SPRING, SHEAR	12
1	-	B		1-690461-6	STOP, SHEAR (FRONT)	11
1	-	B		462548-1	HOLDER, SHEAR (FRONT) SP	10
1	-	B		462547-1	SHEAR, FLOAT (FRONT) SP	9
1	-	C		4-662186-8	ANVIL	8
1	-	C		5-240641-6	SPACER, DEPRESSOR (REAR)	7
1	-	B		690468-1	DEPRESSOR, SHEAR (REAR)	6
1	-	A		462838-1	DEPRESSOR, SHEAR (FRONT) SP	5
1	-	B		2-238011-2	SPACER, BLOCK CRIMPER	4
1	-	C		1-456135-1	CRIMPER, INSULATION	3
1	-	C		455888-3	SPACER, CRIMPER	2
1	-	C		1-456405-7	CRIMPER, WIRE	1

QTY	REV	U/M	DWG SIZE	PART NO	DESCRIPTION	ITEM NO
-1	U/M					

QTY	REV	U/M	DWG SIZE	PART NO	DESCRIPTION	ITEM NO
-1	U/M					



- ▲1 RECOMMENDED SPARE PARTS.
- ▲2 GREASE LIGHTLY.
- ▲3 ITEM NOT SHOWN.
- ▲4 CUT TO LENGTH AT ASSEMBLY.

THIS DRAWING IS A CONTROLLED DOCUMENT.

THIS DRAWING IS UNRELEASED. RELEASED FOR PUBLICATION BY AMP INCORPORATED. ALL RIGHTS RESERVED. COPYRIGHT 19

LOC A  
DIST 66

DIMENSIONS IN INCHES. DO NOT SCALE PRINT. TOLERANCES UNLESS OTHERWISE SPECIFIED:  
 2 PLC DEC ±.02  
 3 PLC DEC ±.  
 4 PLC DEC ±.  
 ANGLES ±.  
 SURF TEXTURE: ✓  
 REMOVE BURRS, BREAK SHARP EDGES R.015 MAX

MATL	HT TR	FIN
DR 11JUL00 R.O.WILSON	APP 12JUL00 T.ELBIN	
CHK 11JUL00 R.O.WILSON	REL	

AMP Incorporated Harrisburg, PA 17105-3608

NAME STRIPPER CRIMPER APPLICATOR MACHINE REF STRIPPER CRIMPER

SCALE DWG NO 567968 SHEET 1 OF 1 REV A

CASE CODE 00779 CUSTOMER AND ASSEMBLY DRAWING RESTRICTED TO