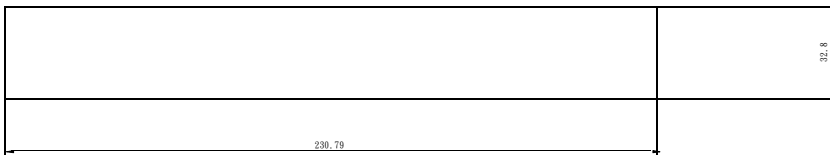
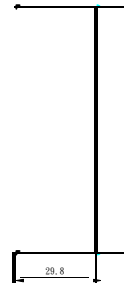
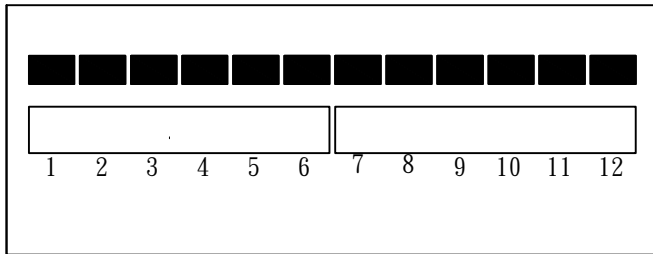
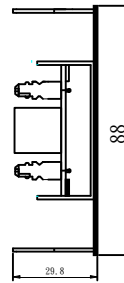
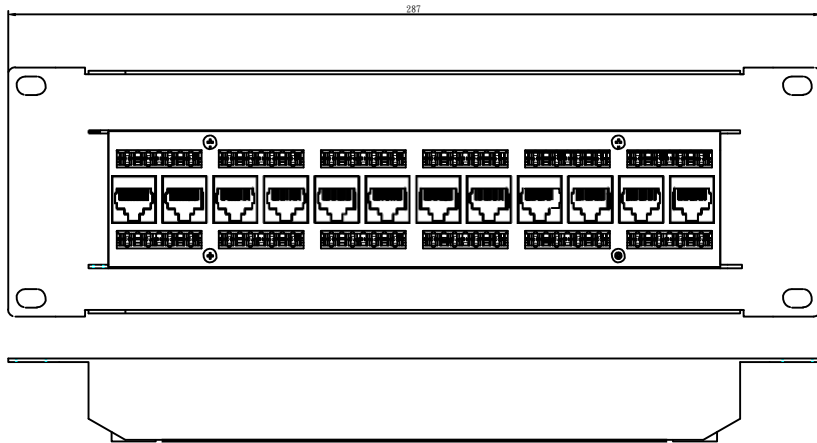


Category 5e 12 Ports Front Type Patch Panel

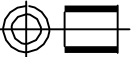


Electrical

1. According to UL1863
2. Current Rating: 1.5 Amp Max.
3. Voltage Rating: 150 Volts
4. Contact Resistance: 20m-ohm
5. Insulation Resistance: 500M-ohm
6. Dielectric Withstand Voltage: 1000VAC
RMS, 60HZ 1MIN

Materials:

1. IDC: PCUL94V-0
2. PCB: FR-4 1.6mm thickness 2 layers
3. PCB JACK (Housing & Insert): PBT, UL94V-0
, 0.35mm thickness phosphor bronze
with Gold plating on contact area.
4. Metal case: 1.2mm thickness metallic

 UNIT SCALE	DSGN		ITEM NO: PPW1-12-8P8C-C5e-FR
	CHK		HYPERLINE
SCALE 1:1	APPR		
DRAWN:			