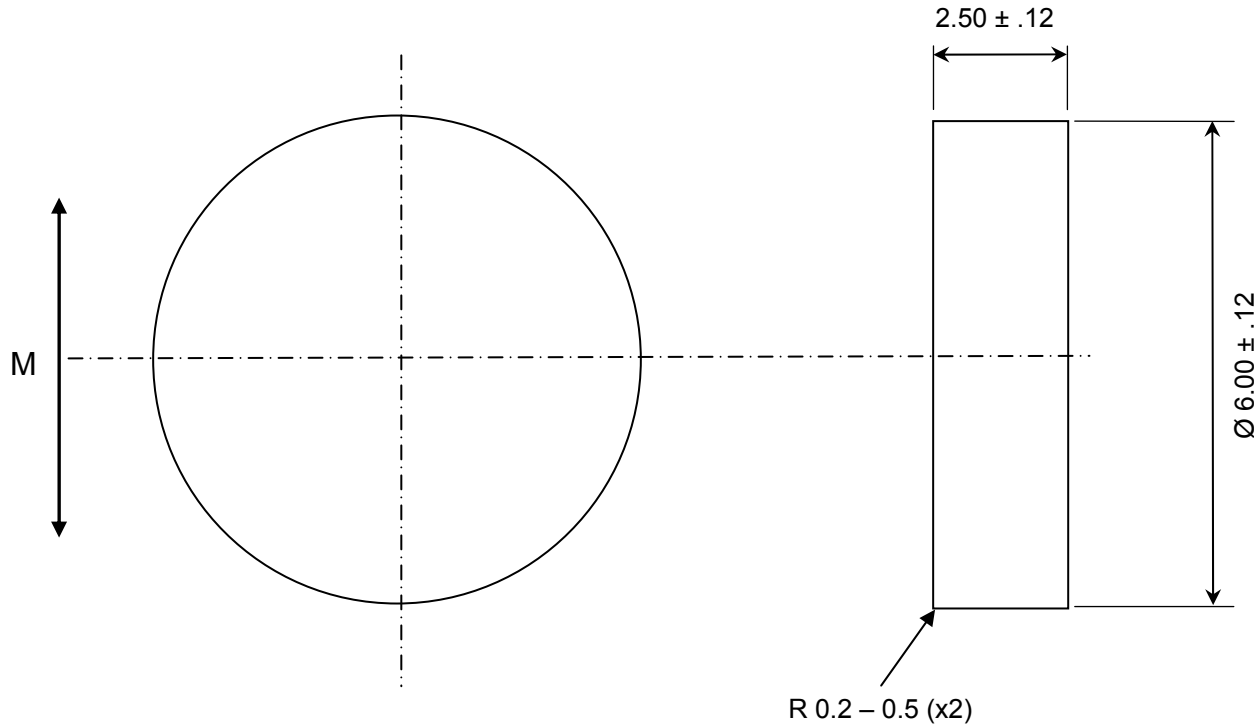
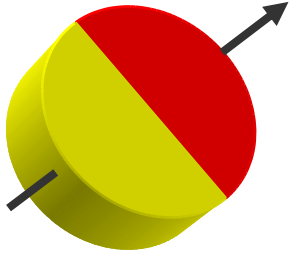


**CONFIDENTIAL & PROPRIETARY INFORMATION**

This document contains Confidential and Proprietary Information of Alliance LLC, and all design, manufacturing, reproduction, use, and sale rights of such information are expressly reserved

ALL DIMENSIONS ARE IN MM



**NOTES:**

- MAGNET PROPERTIES PER N-35SH:  
 Br: 11,800-12,200 G  
 Hc: 10,800-11,500 Oe  
 Hci: ≥20,000 Oe  
 T max: 150 C

2. SUPPLIED MAGNETIZED ACROSS THE DIAMETER

3. PARTS ARE BLACK EPOXY COATED



REV	DESCRIPTION	DATE	BY
B	Changed CAD, incl cert, 3D	1/30/14	BT

**TOLERANCES**  
(UNLESS OTHERWISE NOTED)

DECIMAL      METRIC  
 X.XX = ± .01    X.X = ± .25  
 X.XXX = ± .005   X.XX = ± .13

**ANGLES**  
 ± .5°

DO NOT SCALE DRAWING

<b>Alliance LLC</b>		
1450 CLARK DRIVE, VALPARAISO, INDIANA 46385		
DESCRIPTION: 6.0 mm x 2.5 mm DISC MAGNET		
AMS P/N: AS5000-MD6SH		P/N: 072508AMS
GRADE: N-35SH	Drwg by: BT	REV LEVEL: B
COATING: EPOXY	Appr by: DV	Appr. Dated: 05-15-2013