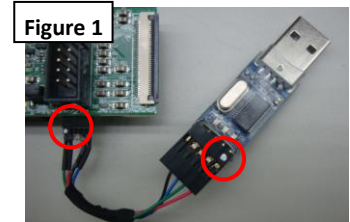


AdapTag Quick Start

1. Install the AdapTag Manager downloads from www.pervasivedisplays.com/kits/adaptag. This will also install the eZ430 USB dongle driver on your PC. If your USB dongle is PL-2303HX type (see picture), please download and install the separate driver from above link. Please note: AdapTag Manager is compatible with Windows® operating systems only.
2. Connect the USB dongle to AdapTag Host board (see Figure 1). Then, connect this to an available USB port on your computer. This will setup the Windows device driver for the MSP430 Application UART. Do not launch AdapTag Manager until installation is completed.
3. Launch AdapTag Manager which will automatically discover the Host board (see Figure 2).
4. Insert one CR2450 battery into the battery holder of each slave board (see Figure 3). Attach each EPD to the respective Slave board according to the Slave ID on the labels. (1401 for 1.44", 2001 for 2" and 2701 for 2.7" – see Figure 4). Place the black jumper on the BT & J6 pins on each slave board as in Figure 5. Verify that the green LED on the Slave board is blinking.



*Follow this figure to connect PL-2303HX.

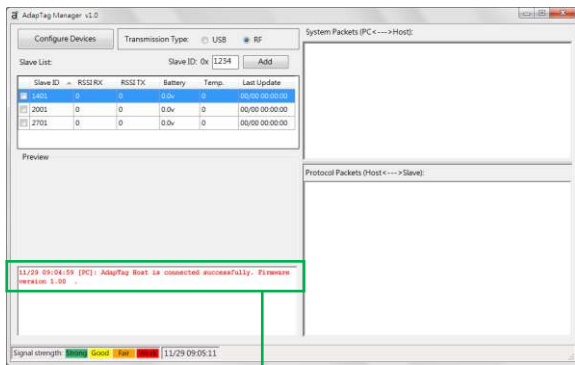
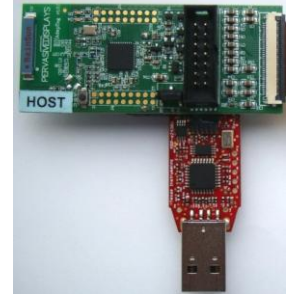
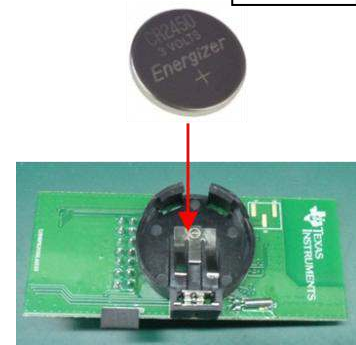


Figure 2

Figure 3



11/29 09:03:07 [PC]: AdapTag Host is connected successfully. Firmware version: 1.00

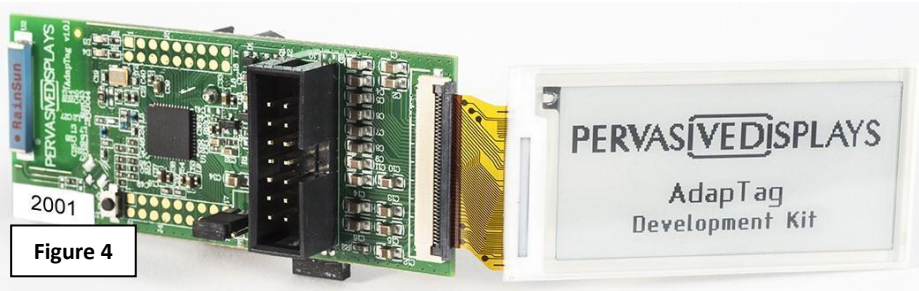


Figure 4

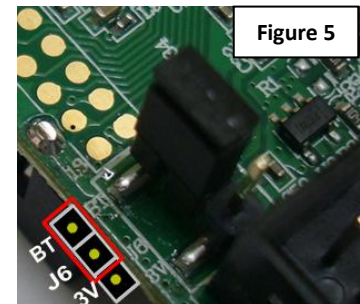


Figure 5

5. On AdapTag Manager, select "RF" for Transmission Type. Click the check box for the selected slave in the Slave list. Right-click and select the appropriate [Send ##" Image to Slave] and browse to the selected image (See Figure 6). The image selected must match the panel size. Confirm the images are correctly displayed on the e-Paper displays and you are done!
6. Refer to the AdapTag User manual for detailed installation instructions and for using AdapTag Manager. This kit may not meet the following directives: RoHS, WEEE, FCC, CE, TELEC, or other related directives. For a complete list of warranty and product terms and conditions, please go to: www.pervasivedisplays.com/kits/adaptag

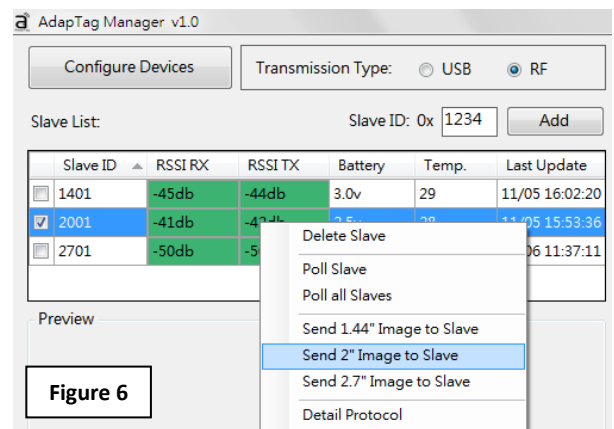


Figure 6