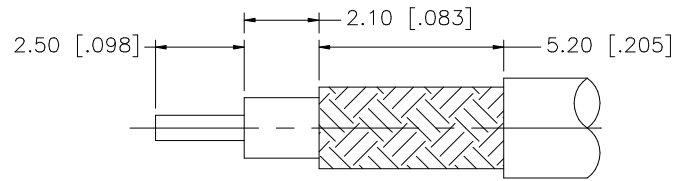
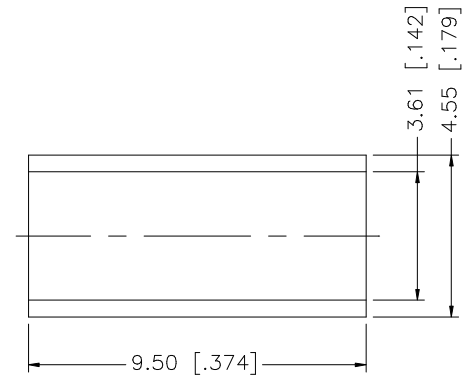
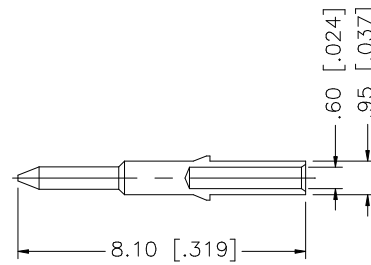
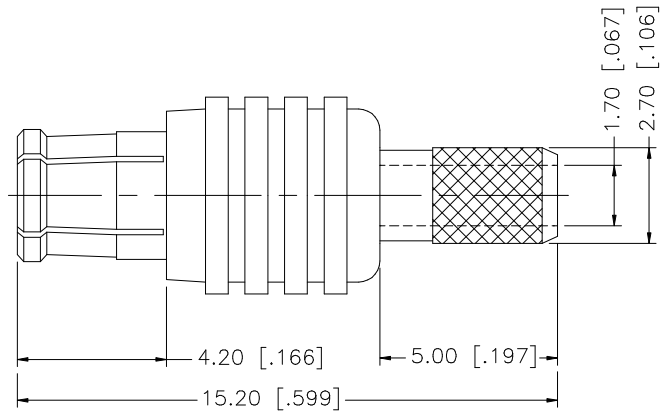


REV.	DATE	DESCRIPTION
A	01/13/99	ADD CRIMP NOTES / CHANGE FERRULE DIMS.
B	07/20/05	UPDATE DRAWING FORMAT
C	10/31/05	MODIFY CRIMP NOTES
D	02/15/07	REVISE BARREL O.D. , FERRULE DIA.



RECOMMENDED CABLE STRIPPING DIMENSIONS



NOTE:

1. CRIMPED FERRULE HEX CRIMP SIZE .151"
2. CRIMPED CONTACT PIN SQ. CRIMP SIZE 0.7(Mmm)

				UNLESS OTHERWISE SPECIFIED DIMENSIONS ARE IN MILLIMETERS, DIMENSIONS IN [] ARE IN INCHES AND FOR CUSTOMER REFERENCE ONLY.	APPROVALS	DATE	Amphenol Connex					
8				UNLESS OTHERWISE SPECIFIED TOLERANCES FOR MILLIMETERS ARE: 0.5 – 8mm ± 0.20mm 8 – 30mm ± 0.40mm 30 – 120mm ± 0.50mm UNLESS OTHERWISE SPECIFIED TOLERANCES FOR INCHES ARE: .020 – .315 = ± 0.007" .315 – 1.180 = ± 0.015" 1.180 – 4.724 = ± 0.020"	DRAWN	G.R.S.					02/15/07	PART DESCRIPTION MCX STRAIGHT CRIMP PLUG – GOLD (FOR RG-316/U DOUBLE BRAID)
7					CHECKED			PART NO. 252121				
6					ISSUED							DWG. NO. 252121.DWG
5	FERRULE	COPPER	GOLD	1	SHEET	1 OF 1	REV.	D	SIZE	A	SCALE	
4	CONTACT PIN	BRASS	GOLD	1								
3	INSULATOR	TEFLON	NATURAL	1								
2	BODY	BER. COPPER	GOLD	1								
1	HOUSING	BRASS	GOLD	1								
DESCRIPTION				MATERIAL	FINISH	QTY	DO NOT SCALE DRAWING					
				CAD FILE			C:/252/252121.DWG					