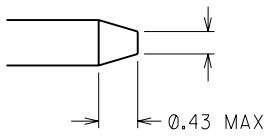
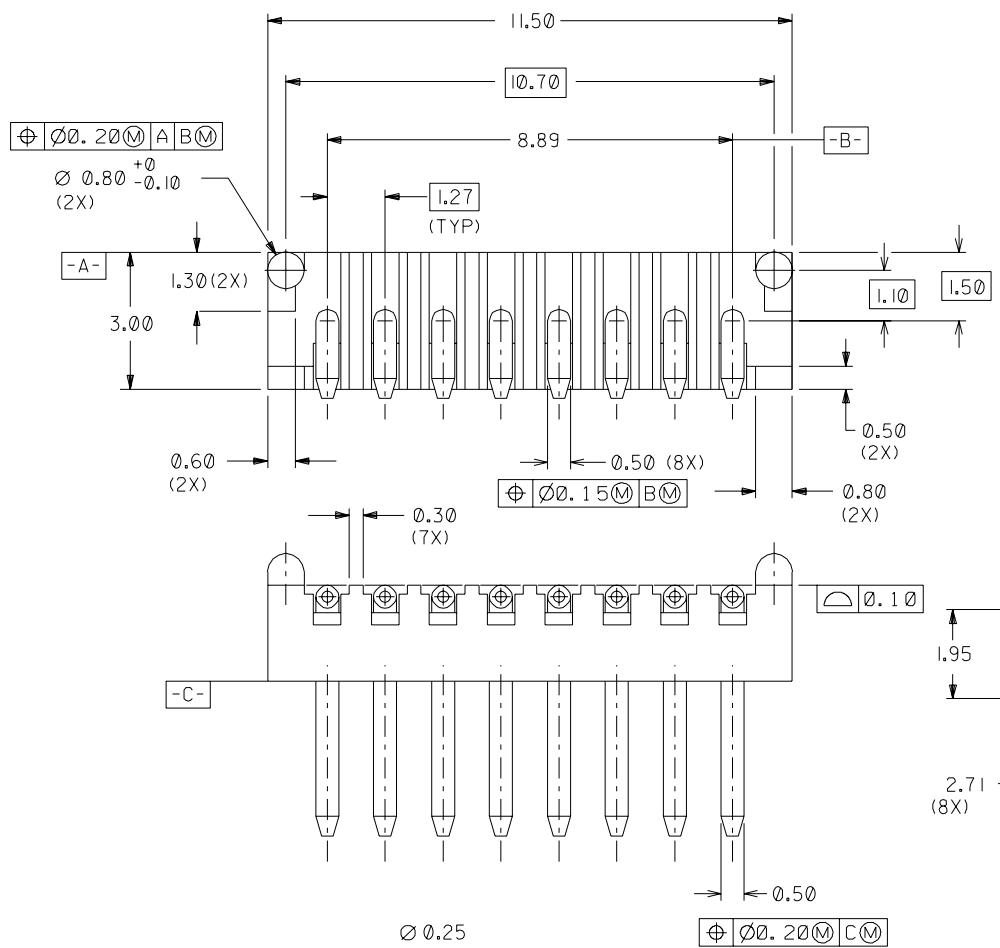


DWG. NO. SD_87026-0001
 CAD FILE S8702601.DGN

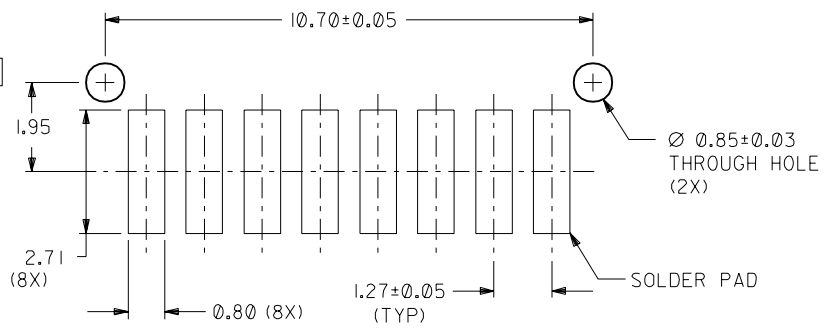
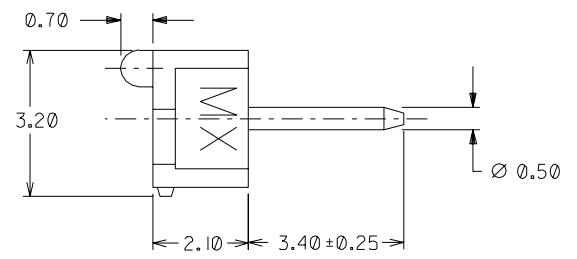
▽

DO NOT SCALE DRAWING



NOTES:

- MATERIAL:**
 HOUSING - LCP, 30% GLASS-FILLED, UL RATED 94V-0
 COLOR: NATURAL
 PIN - BRASS
 PLATING: $0.25\mu\text{M}$ MINIMUM GOLD OVER $1.27\mu\text{M}$ MINIMUM NICKEL OVERALL.
- PART SUPPLIED IN PACKAGING TUBE.**



ALL DIMENSIONS IN MM

				MATERIAL : SEE NOTE 1		MOLEX SINGAPORE PTE LTD SHEET 1 OF 1	
				FINISH : SEE NOTE 1		GENERAL TOLERANCES : $0.18/0.04$ REV B	
B	ADDITION OF RIB AS PER ECN	S60498	KCHU	960418	DWG. NO. SD_87026-0001		
A	RELEASE PER ECN	S50071	ERPOL	940818	TITLE : ASSEMBLY, 1.27MM CENTER HEADER, SURFACE-MOUNT		
LTR	REVISION RECORD	ECN	DR	CHK	DATE	DRAWN BY 940818 ERPOH	CHK'D BY 940919 KCLING
REVISE ONLY ON CAD SYSTEM				APPR'D BY 940918 MARC		SCALE 10 : 1	