

Rectangular connector reference

# 1 mm contacts

## Stamped & formed contacts for EPIC® MC 20



| Contact size    |       | Stripping length<br>mm | Reel of 500 gold contacts:<br>left-hand feed |          |
|-----------------|-------|------------------------|--|----------|
| mm <sup>2</sup> | AWG*  |                        | pin  | socket   |
| 0.08-0.2        | 28-26 | 2.5 ± 0.5              | 44429013                                     | 44429009 |
| 0.2-0.52        | 26-20 | 2.5 ± 0.5              | 44429014                                     | 44429010 |

\* AWG conversion is approximate

Contact tools



Crimp tool:  
11158400



Removal tool:  
11132500

### for thermocouple applications



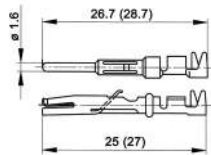
| Contact size    |       | Stripping length<br>mm | Material   | Polarity | Color  | Type   | Strip of 25 contacts |         |
|-----------------|-------|------------------------|------------|----------|--------|--------|----------------------|---------|
| mm <sup>2</sup> | AWG*  |                        |            |          |        |        | pin                  | socket  |
| 0.08-0.2        | 28-26 | 2.5 ± 0.5              | chromel    | (+)      | white  | type K | TC-CH-P              | TC-CH-S |
| 0.2-0.52        | 26-20 | 2.5 ± 0.5              | alumel     | (-)      | green  | type K | TC-AL-P              | TC-AL-S |
| 0.08-0.2        | 28-26 | 2.5 ± 0.5              | iron       | (+)      | black  | type J | TC-IR-P              | TC-IR-S |
| 0.2-0.52        | 26-20 | 2.5 ± 0.5              | constantan | (-)      | yellow | type J | TC-CO-P              | TC-CO-S |

# 1.6 mm contacts

## Stamped & formed contacts



contacts sold in bags of 100 or 1 reel



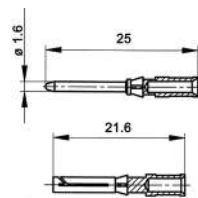
| Contact size    |       | Stripping length<br>mm | Bag of 100 silver contacts |          | Bag of 100 gold contacts |          | Reel of 100 silver contacts:<br>left-hand feed |          | Reel of 200 silver contacts:<br>left-hand feed |          |
|-----------------|-------|------------------------|----------------------------|----------|--------------------------|----------|--|----------|--|----------|
| mm <sup>2</sup> | AWG   |                        | pin                        | socket   | pin                      | socket   | pin  | socket   | pin  | socket   |
| 0.14-0.5        | 26-20 | 2.5-0.5                | 11241100                   | 11231100 | 11243100                 | 11233100 | —  | —        | 11240700                                       | 11230700 |
| 0.5-1.5         | 20-16 | 3.5-0.5                | 11221000                   | 11236100 | 11221300                 | 11238100 | —  | —        | 11220700                                       | 11235700 |
| 1.5-2.5         | 16-14 | 3.5-0.5                | 11223500                   | 11228500 | —                        | —        | 11223000                                       | 11228000 | —  | —        |

| Contact size    |       | Stripping length<br>mm | Reel of 2000 silver contacts:<br>right-hand feed |          | Reel of 2000 gold contacts:<br>right-hand feed |          | Reel of 2000 silver contacts:<br>left-hand feed |          | Reel of 2000 gold contacts:<br>left-hand feed |          |
|-----------------|-------|------------------------|--|----------|--|----------|---|----------|---|----------|
| mm <sup>2</sup> | AWG   |                        | pin  | socket   | pin  | socket   | pin   | socket   | pin   | socket   |
| 0.14-0.5        | 26-20 | 2.5-0.5                | 11240000   | 11230000 | —  | —        | 11240400  | 11230400 | 11240500                                      | 11230500 |
| 0.5-1.5         | 20-16 | 3.5-0.5                | 11220000   | 11235000 | 11220100                                       | 11235200 | 11226000  | 11226500 | —   | —        |
| 1.5-2.5         | 16-14 | 3.5-0.5                | —  | —        | —  | —        | 11222700  | 11227700 | —   | —        |

### Machined contacts



contacts sold in bags of 100



| Contact size    |       | Stripping length<br>mm | # of marking tracks | Bag of 100 silver contacts |          | Bag of 100 gold contacts |          |
|-----------------|-------|------------------------|---------------------|----------------------------|----------|--------------------------|----------|
| mm <sup>2</sup> | AWG   |                        |                     | pin                        | socket   | pin                      | socket   |
| 0.14-0.37       | 26-22 | 8                      | 1                   | 13162000                   | 13163000 | 13162500                 | 13163500 |
| 0.5             | 20    | 8                      | 2                   | 13162100                   | 13163100 | 13162600                 | 13163600 |
| 0.75-1.0        | 18    | 8                      | 3                   | 13162200                   | 13163200 | 13162700                 | 13163700 |
| 1.5             | 16    | 8                      | 4                   | 13162300                   | 13163300 | 13162800                 | 13163800 |
| 2.5             | 14    | 5.8                    | 5                   | 13162400                   | 13163400 | 13162900                 | 13163900 |

Contact tools



Crimp tool:  
11147000



Removal tool:  
11161000



Crimp dies  
for machined contacts: 11147100  
for stamped contacts:  
0.14-0.5 mm<sup>2</sup>: 11147170  
0.5-1.5 mm<sup>2</sup>: 11147180  
1.5-2.5 mm<sup>2</sup>: 11147190



Crimp tool, die & locator  
for stamped contacts:  
0.14-0.5 mm<sup>2</sup>: 11147004  
0.5-1.5 mm<sup>2</sup>: 11147005  
1.5-2.5 mm<sup>2</sup>: 11147006



Locator  
for machined contacts: 11147200  
for stamped contacts: 11147300

If not otherwise specified, all values relating to the product are nominal values. Photographs are not to scale and are not true representations of the products in question. For current information go to our website.

## 2.5 mm contacts

### Stamped & formed contacts for EPIC® MC 4+PE



contacts sold in bags of 100 or 1 reel



| Contact size    |       | Bag of 100 silver contacts |          | Reel of 100 silver contacts |          | Reel of 200 silver contacts |          |
|-----------------|-------|----------------------------|----------|-----------------------------|----------|-----------------------------|----------|
| mm <sup>2</sup> | AWG   | pin                        | socket   | pin                         | socket   | pin                         | socket   |
| 0.5-1.5         | 20-16 | 11201000                   | 11205000 | —                           | —        | 11208000                    | 11209000 |
| 1.5-2.5         | 16-14 | 11202000                   | 11206000 | 11208500                    | 11209500 | —                           | —        |

#### Contact tools

|   |   |   |   |
|---|---|---|---|
|  Crimp tool: 11147000  |  Locator: 11147300   |  Removal tool: 11160000 |  Crimp tool for reel: 11153500 |
|  Crimp dies:<br>0.5-1.5 mm <sup>2</sup> : 11147180<br>1.5-2.5 mm <sup>2</sup> : 11147190 |  Crimp dies for reel:<br>0.5-1.5 mm <sup>2</sup> : 11153700<br>1.5-2.5 mm <sup>2</sup> : 11153800 |   |   |

## Machined contacts



contacts sold in bags of 100



| Contact size                            |     | Stripping length (mm) |        | # of marking tracks | Bag of 100 silver contacts |          | Bag of 100 gold contacts |          |
|---|-----|-----------------------|--------|---------------------|----------------------------|----------|--------------------------|----------|
| mm <sup>2</sup>                         | AWG | pin                   | socket |                     | pin                        | socket   | pin                      | socket   |
| 0.5                                     | 20  | 7.4                   | 7.3    | —                   | 11190000                   | 11195000 | 11192000                 | 11197000 |
| 0.75-1.0                                | 18  | 7.4                   | 7.3    | 1                   | 11190100                   | 11195100 | 11192100                 | 11197100 |
| 1.5                                     | 16  | 7.4                   | 7.3    | 2                   | 11190200                   | 11195200 | 11192200                 | 11197200 |
| 2.5                                     | 14  | 7.4                   | 7.3    | 3                   | 11190300                   | 11195300 | —                        | —        |
| 4.0                                     | 12  | 7.4                   | 7.3    | —                   | 11190400                   | 11195400 | —                        | —        |
| <b>Machined contacts for EPIC® MC 5</b> |     |                       |        |                     |                            |          |                          |          |
| 0.5                                     | 20  | 7.8                   | 7.8    | —                   | 1121300C                   | 1121800C | —                        | —        |
| 0.75-1.0                                | 18  | 7.8                   | 7.8    | 1                   | 1121310C                   | 1121810C | —                        | —        |
| 1.5                                     | 16  | 7.8                   | 7.8    | 2                   | 1121320C                   | 1121820C | —                        | —        |
| 2.5                                     | 14  | 7.8                   | 7.8    | 3                   | 1121330C                   | 1121830C | —                        | —        |
| 4.0                                     | 12  | 7.8                   | 7.8    | —                   | 1121340C                   | 1121840C | —                        | —        |

#### Contact tools

|  |  |  |  |
|--|--|--|--|
|  Crimp tool: 11147000 |  Crimp dies: 11147100 |  Locator: 11147200 |  Removal tool: 11171000 (required for EPIC® MC 5) |
|--|--|--|--|

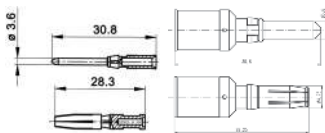
For removal of contacts, use a slotted screwdriver; no special tool is necessary. EPIC® MC 5 requires a removal tool.

## 3.6 mm contacts

### Machined contacts



contacts sold in bags of 100







1.5 - 10 mm<sup>2</sup>

16 mm<sup>2</sup>

| Contact size    |     | Stripping length mm | Bag of 100 silver contacts |          |
|-----------------|-----|---------------------|----------------------------|----------|
| mm <sup>2</sup> | AWG |                     | pin                        | socket   |
| 1.5             | 16  | 10                  | 1121070C                   | 1121570C |
| 2.5             | 14  | 10                  | 1121060C                   | 1121560C |
| 4.0             | 12  | 10                  | 1121000C                   | 1121500C |
| 6.0             | 10  | 10                  | 1121010C                   | 1121510C |
| 10.0            | 8   | 10                  | 1121020C                   | 1121520C |
| 16              | 6   | 10                  | 44424014                   | 44424015 |

#### Contact tools

|  |   |   |  |
|--|---|---|--|
|  Crimp tool: 11147000 |  Crimp dies:<br>1.5-2.5 mm <sup>2</sup> : 11147110<br>4.0-10 mm <sup>2</sup> : 11147120<br>16 mm <sup>2</sup> : 11147111 |  Locator: 11147210 |  Removal tool: 11171100 |
|--|---|---|--|

If not otherwise specified, all values relating to the product are nominal values. Photographs are not to scale and are not true representations of the products in question. For current information go to our website.

Rectangular connector reference

### 4 mm contacts

#### Machined contacts for EPIC® MH 3 & MH 4



contacts sold in bags of 10

| Contact size    |     | Stripping length<br>mm | Bag of 10 silver contacts |           |
|-----------------|-----|------------------------|---------------------------|-----------|
| mm <sup>2</sup> | AWG |                        | pin                       | socket    |
| 1.5             | 16  | 10                     | 44423250                  | 44423255  |
| 2.5             | 14  | 10                     | 44423251                  | 44423256  |
| 4               | 12  | 10                     | 44423252                  | 44423257* |
| 6               | 10  | 10                     | 44423253                  | 44423258  |
| 10              | 8   | 10                     | 44423254                  | 44423259  |

\* contact 44423257 requires crimp die 11174101

#### Contact tools



Crimp tool:  
11147000



Crimp dies:  
16 - 12 AWG: 11147100  
10 - 8 AWG: 11147101



Locator:  
11147201



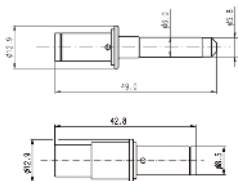
Removal tool:  
44423268

### 6 mm contacts

#### Machined contacts for EPIC® MC HHC2



contacts sold in bags of 20



| Contact size    |     | Bag of 20 silver-plated contacts |          |
|-----------------|-----|----------------------------------|----------|
| mm <sup>2</sup> | AWG | pin                              | socket   |
| 16              | 6   | 44424019                         | 44424022 |
| 25              | 4   | 44424020                         | 44424023 |
| 35              | 1   | 44424021                         | 44424024 |

#### Contact tools



Crimp dies:  
16 mm<sup>2</sup>: 44424025  
25 mm<sup>2</sup>: 44424026  
35 mm<sup>2</sup>: 44424027

Use hydraulic crimp tool:  
Klaue type FK 60/22-L

### 8 mm contacts

#### Machined contacts for EPIC® MH2



contacts sold in bags of 10

| Contact size    |     | Stripping length<br>mm | Bag of 10 silver contacts |          |
|-----------------|-----|------------------------|---------------------------|----------|
| mm <sup>2</sup> | AWG |                        | pin                       | socket   |
| 10              | 8   | 18                     | 44423242                  | 44423246 |
| 16              | 6   | 18                     | 44423243                  | 44423247 |
| 25              | 4   | 18                     | 44423244                  | 44423248 |
| 35              | 2   | 18                     | 44423245                  | 44423249 |

#### Contact tools



Crimp dies:  
10 mm<sup>2</sup>: 44423270  
16 mm<sup>2</sup>: 44423271  
25 mm<sup>2</sup>: 44423272  
35 mm<sup>2</sup>: 44423273



Removal tool:  
44423269

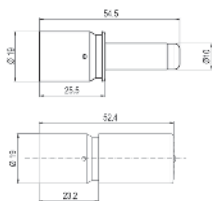
Use with hydraulic crimp tool

### 10 mm contacts

#### Machined contacts for EPIC® MC HHC1



part number = 1 contact



| Contact size    |     | Silver-plated contact |          | Pack size |
|-----------------|-----|-----------------------|----------|-----------|
| mm <sup>2</sup> | AWG | pin                   | socket   |           |
| 50              | 1/0 | 44424032              | 44424035 | 1         |
| 70              | 2/0 | 44424033              | 44424036 | 1         |
| 95              | 3/0 | 44424034              | 44424037 | 1         |

#### Contact tools



Crimp dies:  
50 mm<sup>2</sup>: 44424038  
70 mm<sup>2</sup>: 44424039  
95 mm<sup>2</sup>: 44424040

Use hydraulic crimp tool:  
Klaue type FK 60/22-L

### Coax contacts

#### Contacts for EPIC® MC 3 Coax



| Cable type                   | Impedance | Pin      | Socket   |
|------------------------------|-----------|----------|----------|
| <b>Solder contacts</b>       |           |          |          |
| RG58 CU                      | 50Ω       | 44429018 | 44429017 |
| RG180 BU                     | 75Ω       | 44429020 | 44429019 |
| RG187 AU                     | 75Ω       | 44429022 | 44429021 |
| <b>Solder/crimp contacts</b> |           |          |          |
| RG58                         | 50Ω       | 11214200 | 11219200 |

#### Contact tools



Crimp tool:  
11147000



Crimp dies:  
11147130



Removal tool:  
11171100

If not otherwise specified, all values relating to the product are nominal values. Photographs are not to scale and are not true representations of the products in question. For current information go to our website.

## Contact tools

crimp tool



crimp die



locator



removal tool



| Description            | Crimp tool               | Crimp dies  | Locator  | Removal tool  |
|------------------------|--------------------------|---|----------|---|
| <b>1 mm contacts</b>   |                          |   |          |   |
| 1 mm stamped on reel   | 11158400                 | crimp dies included   | —        | 11132500  |
| <b>1.6 mm contacts</b> |                          |   |          |   |
| 1.6 mm machined        | 11147000                 | 11147100  | 11147200 | 11161000  |
| 1.6 mm stamped         | 11147000                 | 0.14 - 0.5 mm <sup>2</sup> : 11147170<br>0.5 - 1.5 mm <sup>2</sup> : 11147180<br>1.5 - 2.5 mm <sup>2</sup> : 11147190   | 11147300 | 11161000  |
| 1.6 mm stamped on reel |                          | crimp kit (includes tool, dies, and locator)<br>0.14 - 0.5 mm <sup>2</sup> : 11147004<br>0.5 - 1.5 mm <sup>2</sup> : 11147005<br>1.5 - 2.5 mm <sup>2</sup> : 11147006 |          | 11161000  |
| <b>2.5 mm contacts</b> |                          |   |          |   |
| 2.5 mm machined        | 11147000                 | 11147100  | 11147200 | HBE series:<br>use slotted screwdriver<br>MC series: 11171000 |
| 2.5 mm stamped         | 11147000                 | 0.5 - 1.5 mm <sup>2</sup> : 11147180<br>1.5 - 2.5 mm <sup>2</sup> : 11147190  | 11147300 | 11160000  |
| 2.5 mm stamped on reel | 11153500                 | 0.5 - 1.5 mm <sup>2</sup> : 11153700<br>1.5 - 2.5 mm <sup>2</sup> : 11153800  | —        | 11160000  |
| <b>3.6 mm contacts</b> |                          |   |          |   |
| 3.6 mm machined        | 11147000                 | 1.5 - 2.5 mm <sup>2</sup> : 11147110<br>4 - 10 mm <sup>2</sup> : 11147120<br>16 mm <sup>2</sup> : 11147111  | 11147210 | 11171100  |
| <b>4 mm contacts</b>   |                          |   |          |   |
| 4 mm machined          | 11147000                 | 1.5 - 4 mm <sup>2</sup> : 11147100<br>6 - 10 mm <sup>2</sup> : 11147101   | 11147201 | 44423268  |
| <b>6 mm contacts</b>   |                          |   |          |   |
| 6 mm machined          | use hydraulic crimp tool | 16 mm <sup>2</sup> : 44424025<br>25 mm <sup>2</sup> : 44424026<br>35 mm <sup>2</sup> : 44424027   | —        | —   |
| <b>8 mm contacts</b>   |                          |   |          |   |
| 8 mm machined          | use hydraulic crimp tool | 10 mm <sup>2</sup> : 44423270<br>16 mm <sup>2</sup> : 44423271<br>25 mm <sup>2</sup> : 44423272<br>35 mm <sup>2</sup> : 44423273                                      | —        | 44423269  |
| <b>10 mm contacts</b>  |                          |   |          |   |
| 10 mm machined         | use hydraulic crimp tool | 50 mm <sup>2</sup> : 44424038<br>70 mm <sup>2</sup> : 44424039<br>95 mm <sup>2</sup> : 44424040   | —        | —   |
| <b>Coax contacts</b>   |                          |   |          |   |
| Coax                   | 11147000                 | 11147130  | —        | 11171100  |

If not otherwise specified, all values relating to the product are nominal values.  
Photographs are not to scale and are not true representations of the products in question.  
For current information go to our website.