



ANATECH ELECTRONICS INC
RF & Microwave Filters & Products

1500 MHz LC Band Pass Filter

Part Number: AE1500B5342



Electrical Specifications

Center Frequency: 1500 MHz
0.1dB Passband: 1495 MHz to 1505 MHz
Rejection1: 44dB Min. @ 750 MHz
Rejection2: 11dB Min. @ 2250 MHz
Rejection3: 47dB Min. @ 3000 MHz
Rejection4: 28dB Min. @ 3750-15000 MHz
Impedance: 50 Ohms

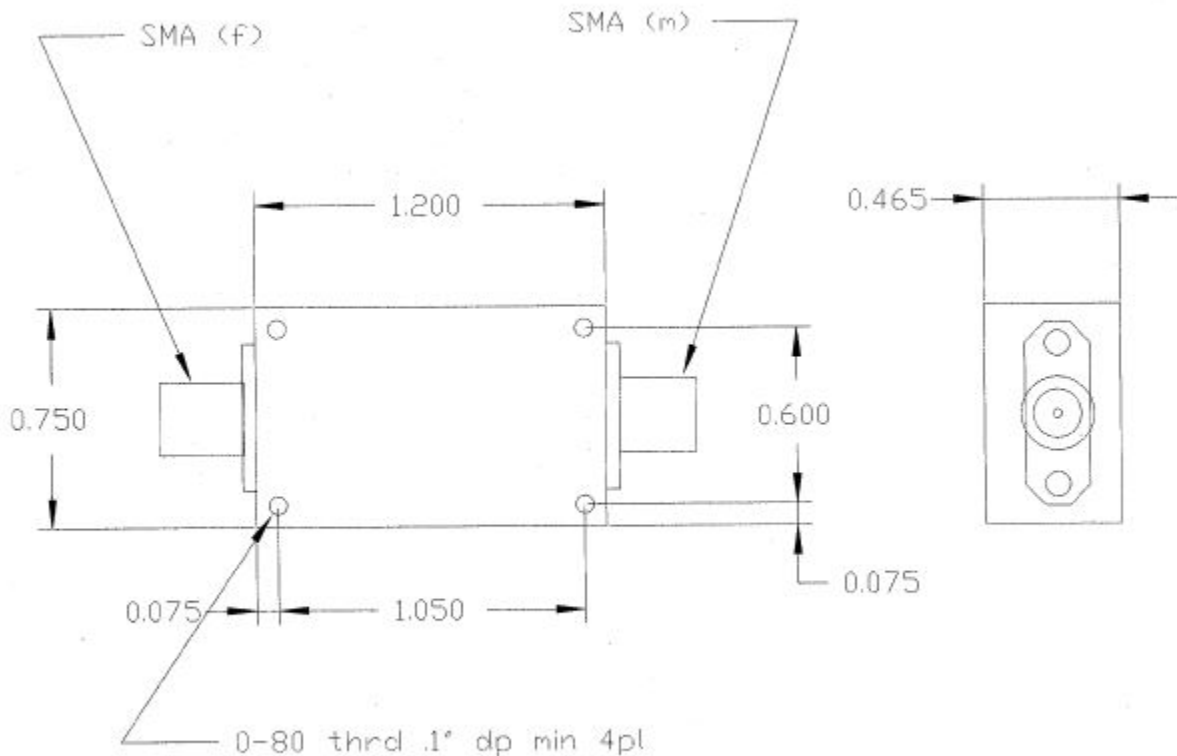
Mechanical

Mounting Method: Threaded Mounting Holes
Connector Type: SMA(F) & SMA(M)
Dimensions: 1.2" X 0.75" x 0.465"

Environmental

Operating Temperature: -25°C to +70°C
Storage Temperature: -40°C to +90°C
Shock: 10 G. 11ms
Vibration: 10 G. 5 to 200Hz

Outline Drawing:



2 decimal places: +/-0.01 inches [+/- 0.3mm]
 3 decimal places: +/- 0.005 inches [+/- 0.13mm]
 Angles: +/- 1 Deg.

When max dimensions are called out the above tolerances do not apply as long as it is under the max call out.

70 Outwater Lane Phone: (973) 772-4242
Garfield, NJ 07026 Fax : (973) 321-3941

Email: sales@anatechelectronics.com
Web: www.anatechelectronics.com



ANATECH ELECTRONICS INC
RF & Microwave Filters & Products

1500 MHz LC Band Pass Filter

Part Number: AE1500B5342

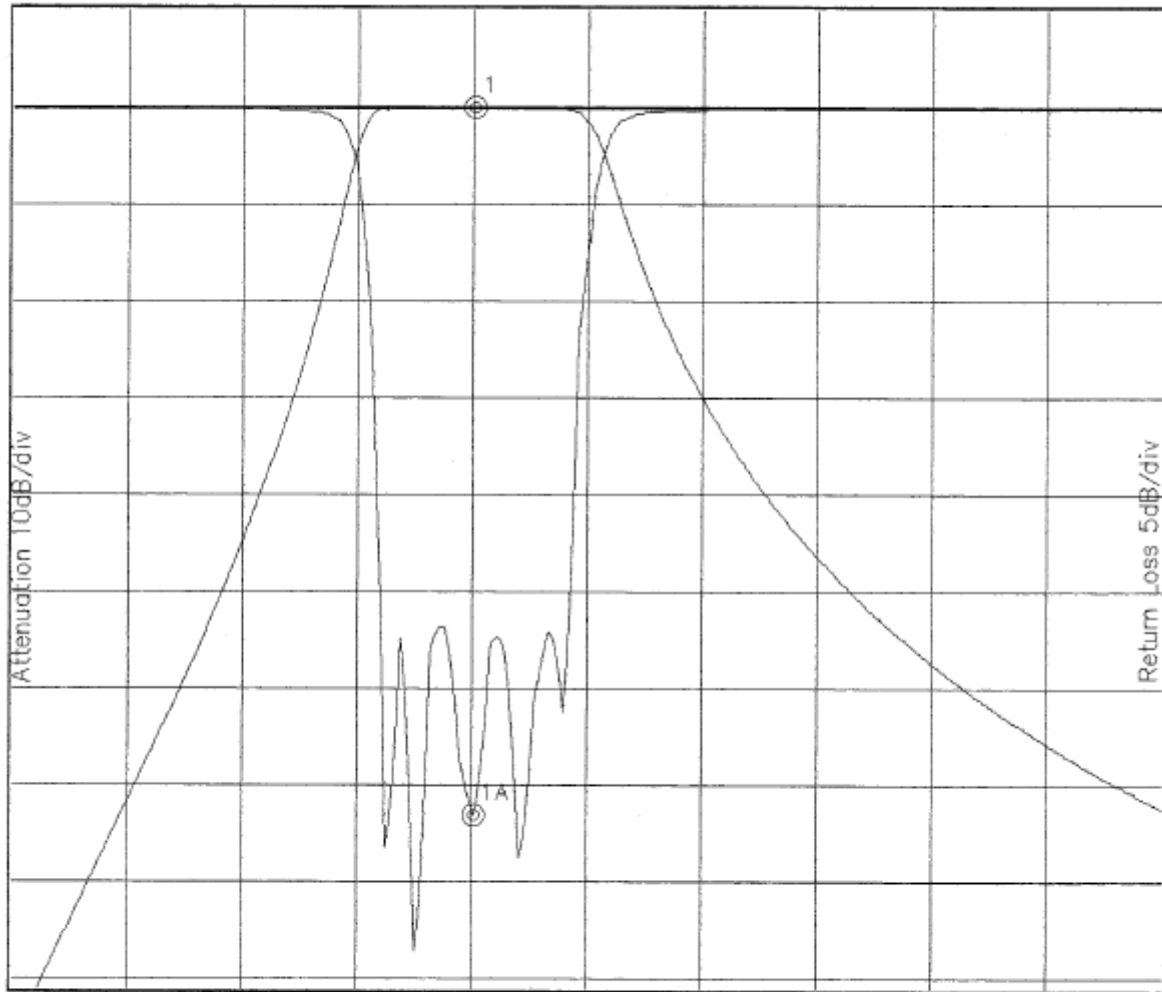


Simulation Plot:

B5342A.lad

DEC 6, 1999

Attenuation/Return Loss



Attenuation Start: 500.0MHz Stop: 3.0GHz

Return Loss Start: 500.0MHz Stop: 3.0GHz

Offset -0.4347dB

Marker 1 Freq 1.502GHz Atten 0.066dB

Marker 1A Freq 1.502GHz Ret Loss -35.361dB

Note: This is a simulation plot. Actual results may differ once the product is implemented.

70 Outwater Lane Phone: (973) 772-4242
Garfield, NJ 07026 Fax : (973) 321-3941

Email: sales@anatechelectronics.com
Web: www.anatechelectronics.com