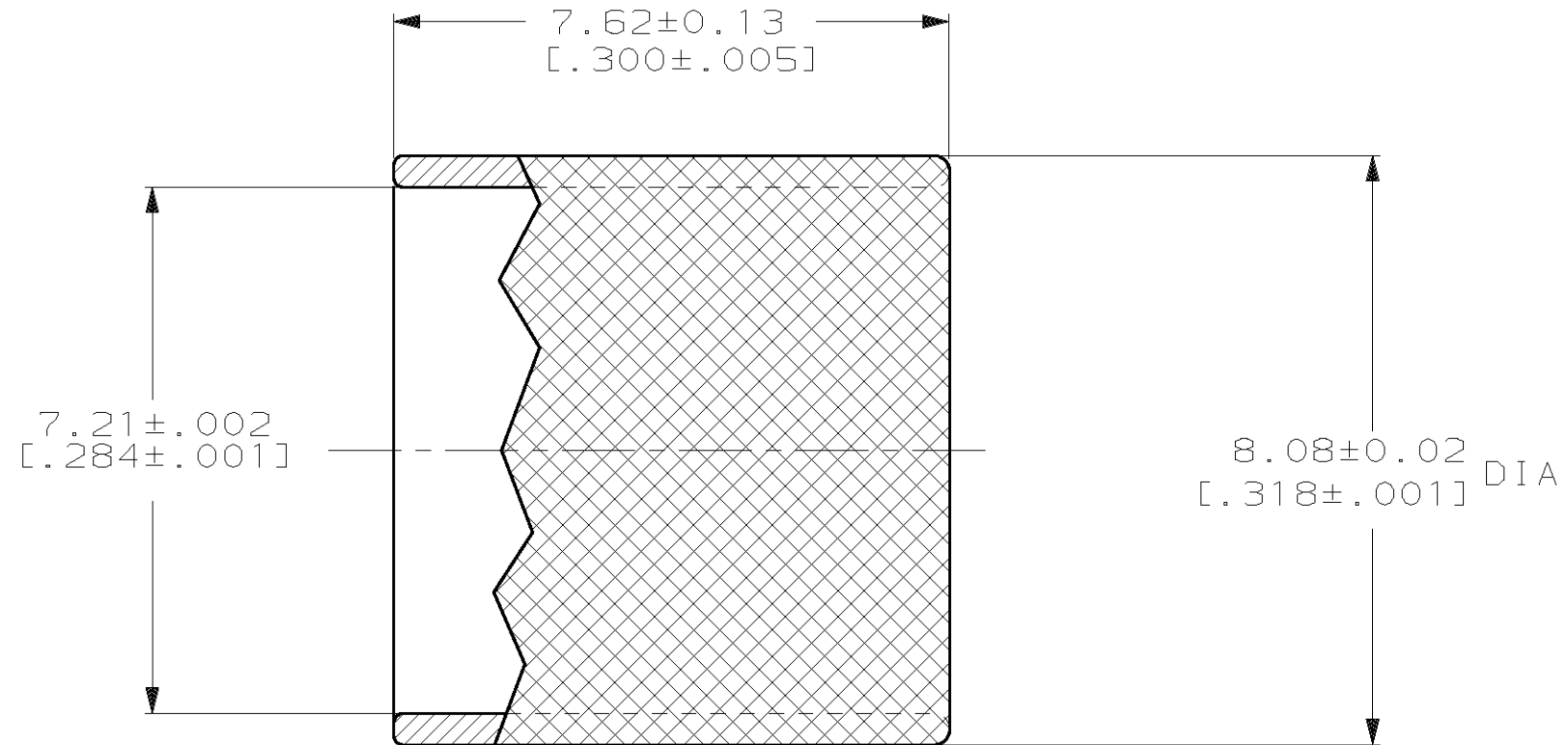
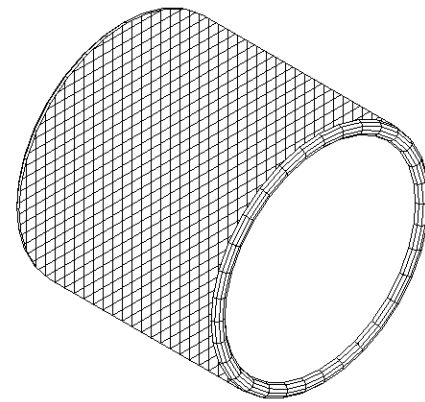


THIS DRAWING IS UNPUBLISHED. RELEASED FOR PUBLICATION, 19
 © COPYRIGHT 19 BY AMP INCORPORATED. ALL INTERNATIONAL RIGHTS RESERVED.

| LOC | DIST | P | F | REVISIONS | | | |
|------|------|-------------|------|-----------|-------------------------|---------|--------|
| ZONE | LTR | DESCRIPTION | DATE | APPD | | | |
| CE | 16 | | | C | REVISE PER 0A00-0717-98 | 04DEC98 | JPM/MB |
| | | | | C | REVISE PER 0A00-0588-03 | 26MAR04 | KG/SB |



1 BULK PACKAGED, 100 PCS.

| | |
|-------------|----------|
| 1 OBSOLETE | 501784-3 |
| | 501784-1 |
| PART NUMBER | |

| | | | |
|--|-------|-----------------------|--|
| DO NOT SCALE PRINT. UNLESS SPECIFIED DIMENSIONS IN mm TOLERANCES ON: 2 PLC DEC ± - 3 PLC DEC ± - ANGLES ± - | | DR B. BRIGGS 8-10-89 | AMP INCORPORATED Harrisburg, Pa. 17105 |
| MATERIAL | BRASS | CHK D. SONNER 8-10-89 | |
| FINISH | - | APPD S. OWENS 8-10-89 | NAME |
| | | APPD S. OWENS 8-10-89 | CRIMP RING, INNER, FIXED SHROUD DUPLEX, OPTIMATE |
| | | PRODUCT SPEC - | SIZE B |
| | | APPLICATION SPEC - | FSCM NO 00779 |
| | | WEIGHT - | DRAWING NO 501784 |
| | | | SCALE 10:1 |
| | | | SHEET 1 OF 1 |